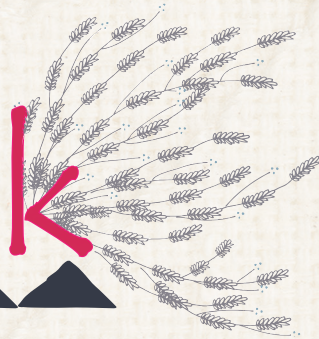


ptak





Pat Bravo



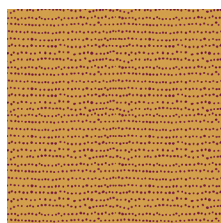
INDIEfolk

FABRICS DESIGNED BY PAT BRAVO

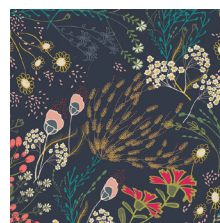
MEMORIES



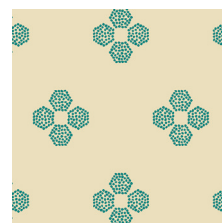
IFL-46300
KHOKHLOMA BURGUNDIA



IFL-46301
FLECKS AUBURN



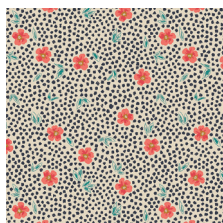
IFL-46302
MEADOW DIM



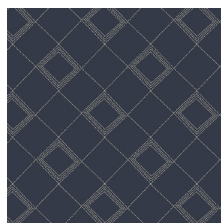
IFL-46303
DROPLET PETAL MALACHITE



IFL-46304
TRINKET VIVID



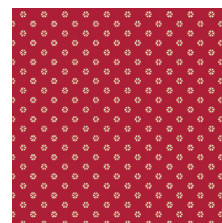
IFL-46305
MIST FLORA LUMINOUS



IFL-46307
TARTAN MIDNIGHT



IFL-46308
VERDANT BLOOM



IFL-46309
WHIRL ROUGE

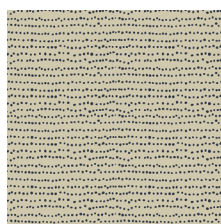


IFL-46310
TRŮJKAT SUNRISE

FABLES



IFL-56300
KHOKHLOMA GLOOM



IFL-56301
FLECKS INDIGO



IFL-56302
MEADOW VIVID



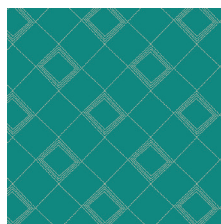
IFL-56303
DROPLET PETAL STORM



IFL-56304
TRINKET BLUSH



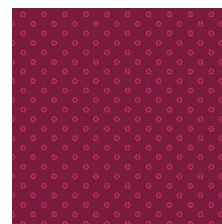
IFL-56306
PATHWAYS RICH



IFL-56307
TARTAN TEAL



IFL-56308
POWDER BLOOM



IFL-56309
WHIRL MAUVE



IFL-56310
TRŮJKAT DESERT



FEEL THE DIFFERENCE © 2017 Courtesy of Art Gallery Quilts LLC. All Rights Reserved.



FINISHED SIZE | 18" x 18"

FABRIC REQUIREMENTS

Fabric A	IFL-46310	½ yd.
Fabric B	IFL-46305	F8
Fabric C	IFL-46308	F8
Fabric D	IFL-56310	F8
Fabric E	IFL-56307	F8
Fabric F	IFL-56309	F8
Fabric G	IFL-46309	F8
Fabric H	IFL-56301	F8
Fabric I	IFL-46307	F8
Fabric J	PE-421	½ yd.
Fabric K	PE-438	F8
Fabric L	PE-406	F8
Fabric M	PE-433	F8
Fabric N	PE-428	F8
Fabric O	PE-405	F8
Fabric P	PE-35	F8

CUTTING DIRECTIONS

*¼" seam allowances are included.
WOF means width of fabric.*

- Two (2) 18½" x 2½" strips from fabric **A**.
- Two (2) 19" x 12" rectangles from fabric **A**.
- One (1) 18½" x 14½" rectangle from fabric **J**.
- Two (2) 19" x 13" rectangles from fabric **I**.
- Two (2) 3¾" x 3¾" squares from fabric **I** and **O**.
- One (1) template a from fabric **B**.
- One (1) template b from fabric **C**.
- One (1) template c from fabric **D**.
- One (1) template d from fabric **K**.
- One (1) template e from fabric **K**.
- Three (3) template f from fabric **K** and **H**.
- One (1) template g from fabric **H**.
- One (1) template h from fabric **E**.
- One (1) template i from fabric **E**.

XXXXXXXXXXXXXXXXXXXXXXXXXXXXXXXXXXXX

- One (1) template j from fabric **L**.
- One (1) template k from fabric **F**.
- One (1) template l from fabric **G**.
- One (1) template m from fabric **M**.
- One (1) template n from fabric **N**.
- One (1) template o from fabric **O**.
- Two (2) template p from fabric **P**.

CONSTRUCTION

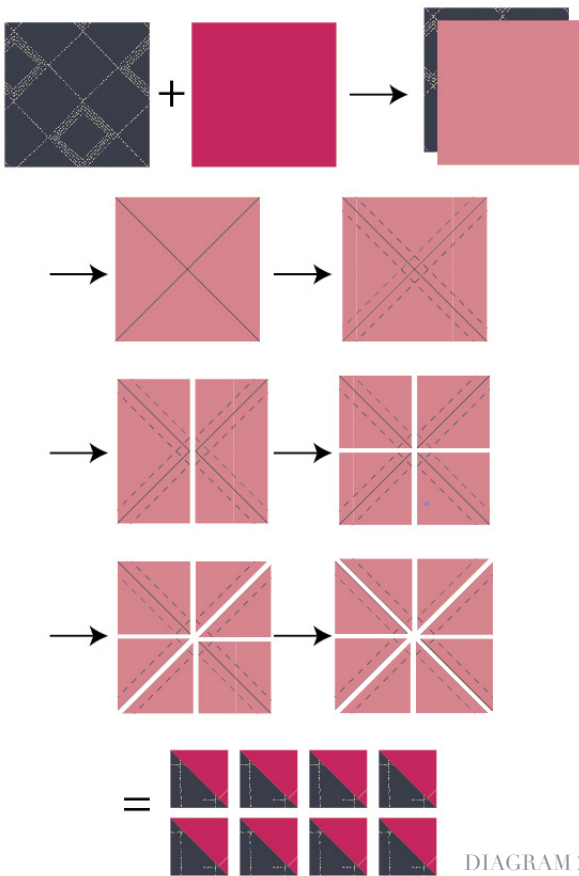
Sew all rights sides together with ¼" seam allowance.

- Join one (1) 18½ x 2½' strips from fabric **A**, one (1) 18½" x 14½" rectangle from fabric **J**, and one (1) 18½ x 2½' strips from fabric **A**.



DIAGRAM 1

- Take two (2) 3¾" x 3¾" squares from fabric **I** and **O**, and do the 'Magic 8 Method' twice:
- Place one (1) square from fabric **I**, facing one (1) square from fabric **O**.
- Draw two diagonal lines corner to corner.
- Stitch ¼' away from each drawn line on both sides.
- Cut vertically right down the center.
- Make a second cut that's perpendicular to the cut you just made.
- Cut on both of the drawn diagonal lines, between your stitching lines.
- Separate your pieces and open them up to reveal your perfect half square triangles.
- Press
- Repeat the process with the other two squares.



- Take twelve (12) of the previous HST squares and join them in four rows of three:



DIAGRAM 3

- Take the three (3) template f from fabric **K** and **H**.
- Join them **H** > **K** > **H** > **K** > **H** > **K**.
- Trim the sides so the final piece is a rectangle.
- For fabric placement, attachment, and trimming, follow Diagram 4.

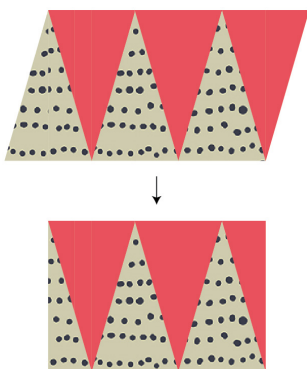


DIAGRAM 4

ASSEMBLE PILLOW TOP

- Place template q and r on top of the pillow top, (rectangle made from fabrics **A** and **J**).
- Using steam a seam, place all the different fussy cut pieces and the pieced rectangles on top of the pillow to form the bird.
- Press the pillow top.
- Place a piece of batting behind the pillow top.
- Stitch all around the fussy cut, and pieced pieces to secure the fabric.
- Quilt as you desire.

CREATING THE BACK PILLOW

- To make a envelope back for your pillow take both 19" x 12" rectangles and fold one 19" side on each rectangle in 1/2" and press and then fold another 1/2" and press.
- Top-stitch as close to the edge as possible.
- Place rectangles right side together on top of each other to the front of your pillow and stitch all the way around your pillow at 1/4" seam allowance.
- Clip corners at seam allowance and flip piece to the right side of the fabric.
- Fill pillow with a 18" x 18" pillow form and enjoy!



artgalleryfabrics.com

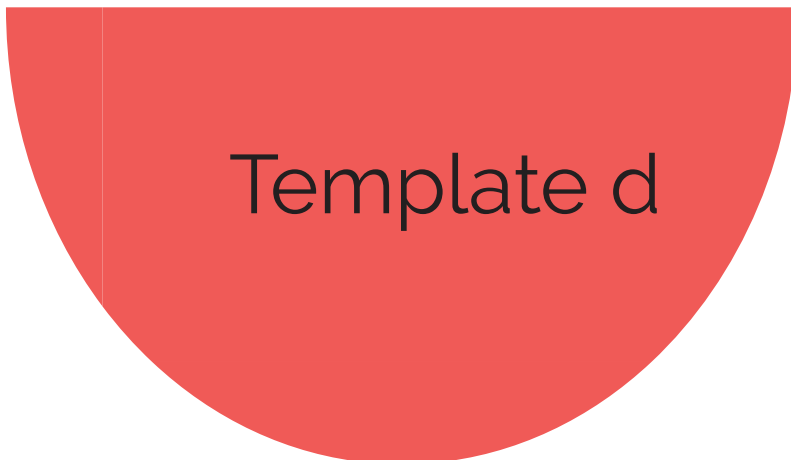
NOTE: While all possible care has been taken to ensure the accuracy of this pattern, We are not responsible for printing errors or the way in which individual work varies. Please read instructions carefully before starting the construction of this quilt. If desired, wash and iron your fabrics before starting to cut.

Template a




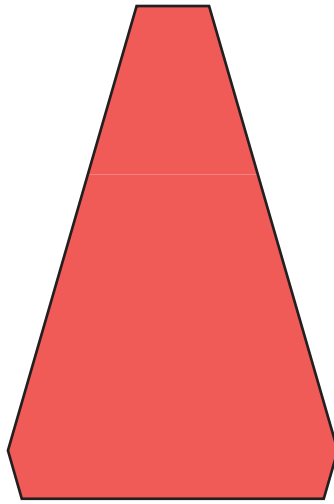
A decorative circular graphic with a teal background, yellow polka dots, and floral patterns in red, yellow, and blue. The floral patterns are arranged in a circular, symmetrical design, with a central cluster of flowers and smaller clusters around the perimeter. The flowers are in various colors, including red, yellow, and blue, and are surrounded by green leaves. The overall design is vibrant and eye-catching.

A circular graphic with a geometric pattern of triangles in brown, beige, and teal, with the word 'Template' in the top right corner.

A large red semi-circle shape that serves as the background for the slide. It is centered horizontally and occupies most of the frame.

Template d





Template f



Template g



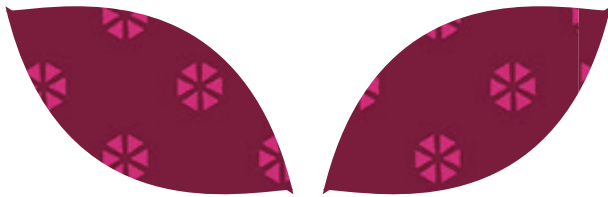
Template h



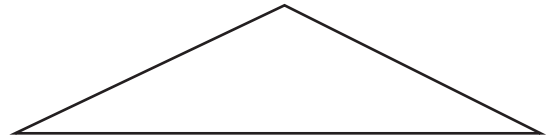
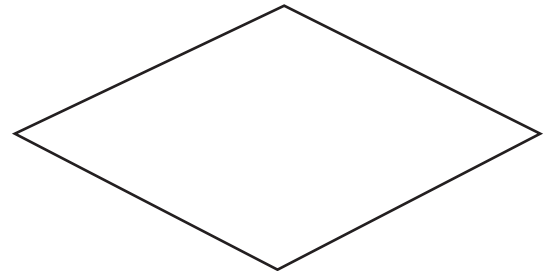
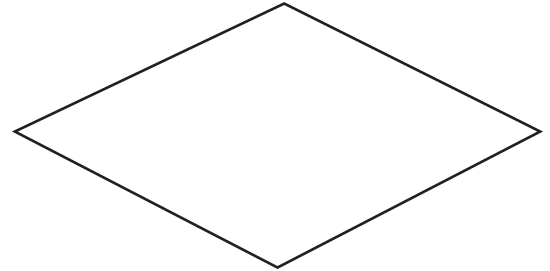
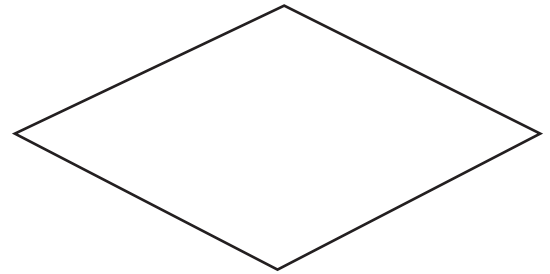
Template j



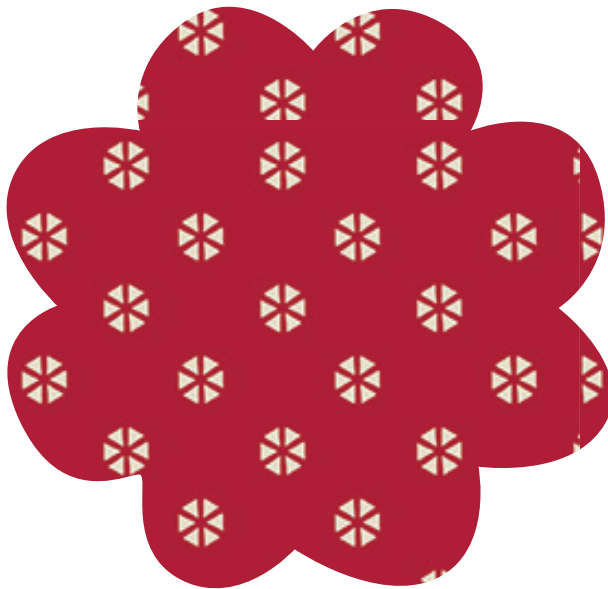
Template i



Template k



Template m



Template l



Template n



Template o



Template p

Template q

xxxxxxxxxxxxxxxxxxxxxxxxxxxxxxxx

Template r

