

featuring INDIE FOLK COLLECTION BY PAT BRAVO

# OMBRE BLOC



FREE PATTERN

XXXXXXXXXXXXXXXXXXXXXXXXXXXX





# OMBRE BLOC

QUILT DESIGNED BY AGF STUDIO

## INDIEfolk

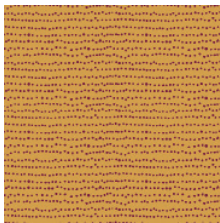
FABRICS DESIGNED BY PAT BRAVO



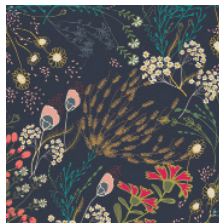
MEMORIES



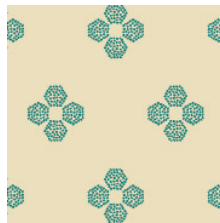
IF1-46300  
KHOKHLOMA BURGUNDIA



IF1-46301  
FLECKS AUBURN



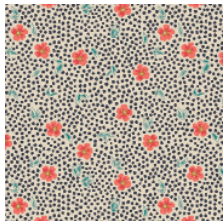
IF1-46302  
MEADOW DIM



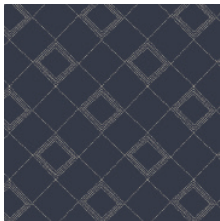
IF1-46303  
DROPLET PETAL MALACHITE



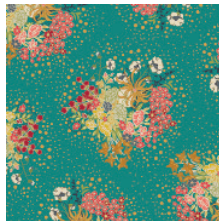
IF1-46304  
TRINKET VIVID



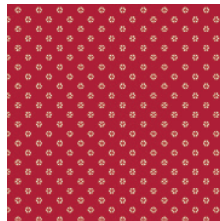
IF1-46305  
MIST FLORA LUMINOUS



IF1-46307  
TARTAN MIDNIGHT



IF1-46308  
VERDANT BLOOM



IF1-46309  
WHIRL ROUGE



IF1-46310  
TROJKAŹ SUNRISE

FABLES



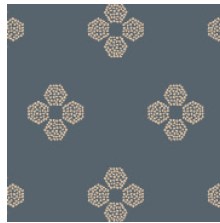
IF1-56300  
KHOKHLOMA GLOOM



IF1-56301  
FLECKS INDIGO



IF1-56302  
MEADOW VIVID



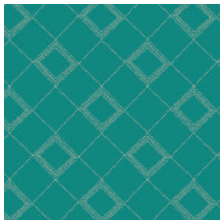
IF1-56303  
DROPLET PETAL STORM



IF1-56304  
TRINKET BLUSH



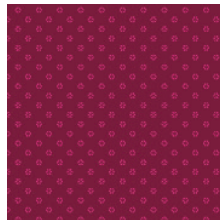
IF1-56306  
PATHWAYS RICH



IF1-56307  
TARTAN TEAL



IF1-56308  
POWDER BLOOM



IF1-56309  
WHIRL MAUVE



IF1-56310  
TROJKAŹ DESERT



XX

## FABRIC REQUIREMENTS

IFL-56304 (Fabric I) *(included)*

## CONSTRUCTION

Figure 1 displays a 5x4 grid of 20 small images, each showing a different pattern or texture. The patterns include solid colors, stripes, and complex geometric designs. The images are arranged in two rows of five columns each. The first row shows a variety of patterns, including solid colors, stripes, and complex geometric designs. The second row shows a similar variety of patterns, including solid colors, stripes, and complex geometric designs.

DIAGRAM 3



# Assembly Diagram

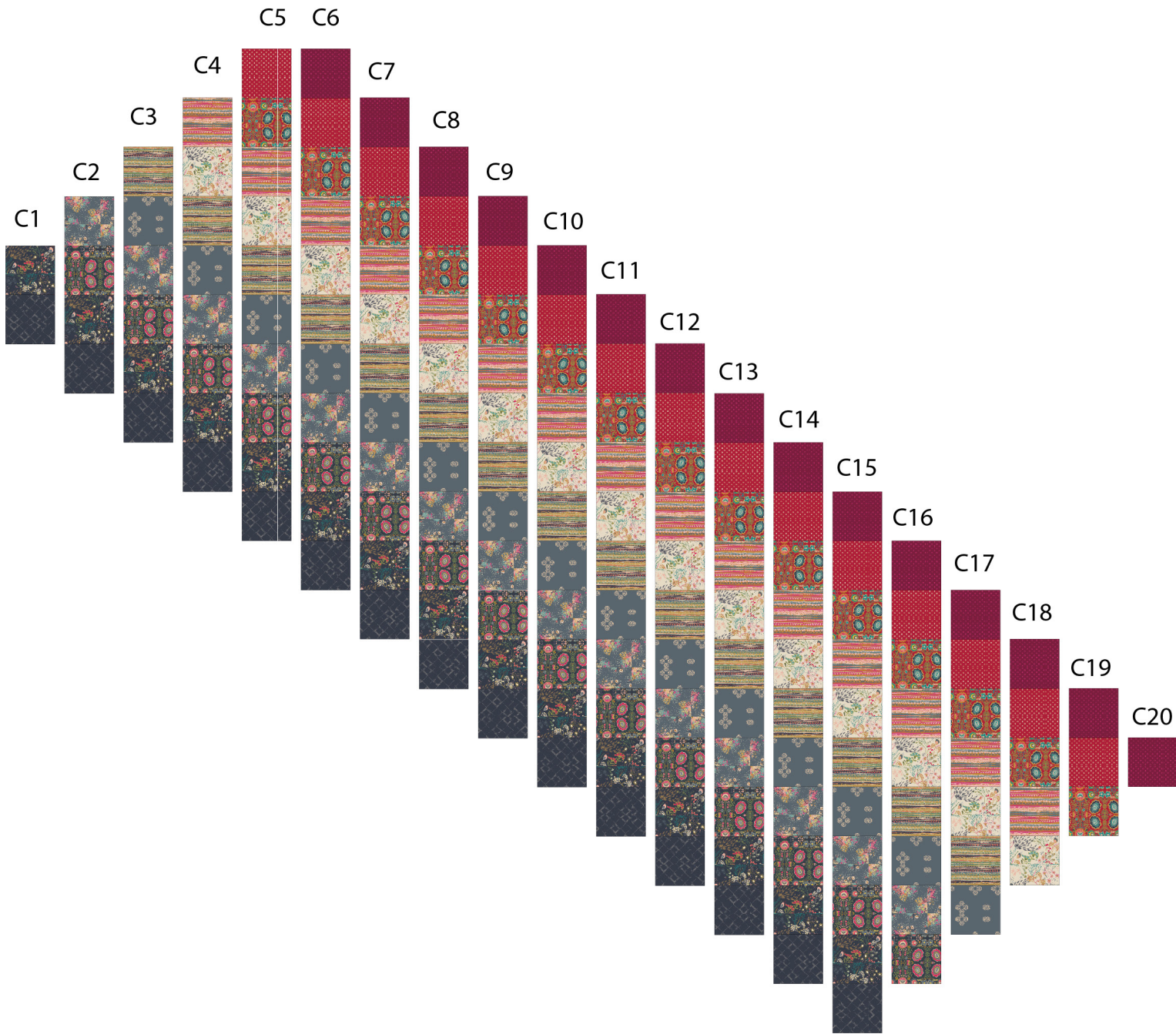


DIAGRAM 2

- When sewing columns together make sure to refer to this Assembly Diagram to make sure blocks are aligned correctly.

## QUILT ASSEMBLY

*Sew rights sides together.*

- © Cut your yard of Backing fabric in half width-wise and sew top to bottom to get a piece of fabric approximately 22' x 70'. Press and spread face down.
- © Place BATTING on top of backing fabric.
- © Place TOP on top of the batting with right side facing up. Smooth away wrinkles using your hands.
- © Pin all layers together with safety pins.
- © We recommend this table-runner be hand-tied instead of machine quilted. Tie the quilt together with decorative thread by sewing through all layers and knotting in the center of each 3" square.
- © Trim excess fabric or batting, squaring the table-runner to proceed to bind it.



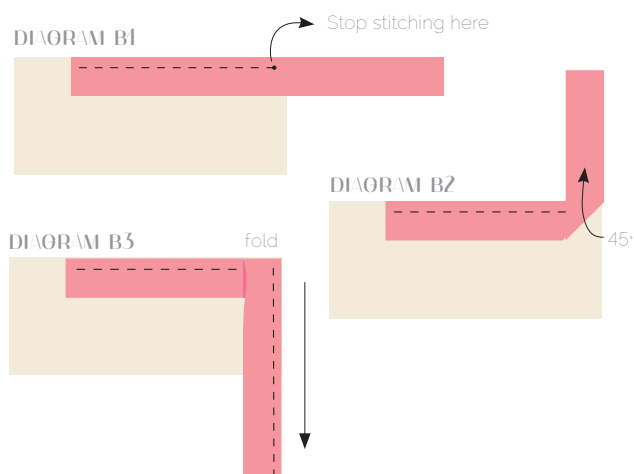
DIAGRAM 4

## BINDING

*Sew rights sides together.*

- Sew your 1 ½' wide binding strips together to make a final strip 170' long. Fold strip in half and press. Start sewing the binding strip in the middle of one of the sides of the quilt, placing the strip right side down with the fold edge of your binding facing in and leaving an approximated 5' tail. Sew with ¼' seam allowance (using straight stitch), aligning the strip's raw edge with the quilt top's raw edge.
- © Stop stitching ¼' before the edge of the quilt (**DIAGRAM B 1**). Clip the threads. Remove the quilt from under the machine presser foot. Fold the strip in a motion of 45° and upward, pressing with your fingers (**DIAGRAM B2**). Hold this fold with your finger, bring the strip down in line with the next edge, making a horizontal fold that aligns with the top edge of the quilt (**DIAGRAM B3**).

- © Start sewing at ¼' of the border, stitching all the layers. Do the same in the four corners of the quilt.
- © Stop stitching before you reach the last 5 or 6 inches. Cut the threads and remove the quilt from under the machine presser foot. Lay the loose ends of the binding flat along the quilt edge, folding the ends back on themselves where they meet. Press them together to form a crease. Using this crease as the stitching line, sew the two open ends of the binding with right sides together (you can help yourself marking with a pencil if the crease is difficult to see).
- © Trim seam to ¼' and press open. Complete the sewing. Turn binding to back of the quilt, turn raw edge inside and stitch by hand using blind stitch.



[artgalleryfabrics.com](http://artgalleryfabrics.com)

*NOTE: While all possible care has been taken to ensure the accuracy of this pattern, We are not responsible for printing errors or the way in which individual work varies. Please read instructions carefully before starting the construction of this quilt. If desired, wash and iron your fabrics before starting to cut.*

©2017 Courtesy of Art Gallery Quilts LLC. All Rights Reserved.