





Pat Bravo

# INDIEfolk

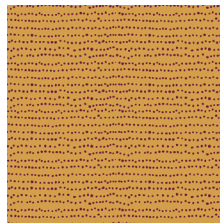
FABRICS DESIGNED BY PAT BRAVO



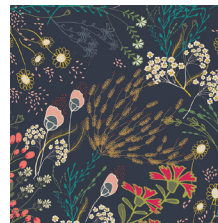
MEMORIES



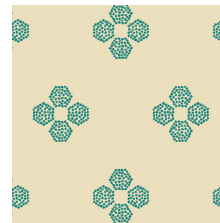
IFL-46300  
KHOKHLOMA BURGUNDIA



IFL-46301  
FLECKS AUBURN



IFL-46302  
MEADOW DIM



IFL-46303  
DROPLET PETAL MALACHITE



IFL-46304  
TRINKET VIVID



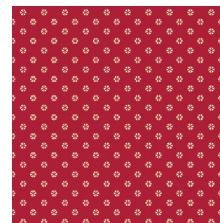
IFL-46305  
MIST FLORA LUMINOUS



IFL-46307  
TARTAN MIDNIGHT



IFL-46308  
VERDANT BLOOM



IFL-46309  
WHIRL ROUGE

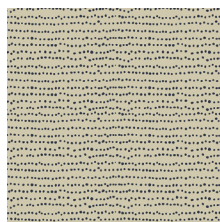


IFL-46310  
TRJOKAT SUNRISE

FABLES



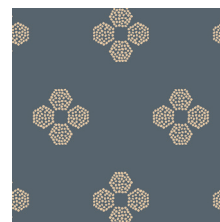
IFL-56300  
KHOKHLOMA GLOOM



IFL-56301  
FLECKS INDIGO



IFL-56302  
MEADOW VIVID



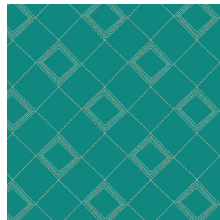
IFL-56303  
DROPLET PETAL STORM



IFL-56304  
TRINKET BLUSH



IFL-56306  
PATHWAYS RICH



IFL-56307  
TARTAN TEAL



IFL-56308  
POWDER BLOOM



IFL-56309  
WHIRL MAUVE



IFL-56310  
TRJOKAT DESERT



FEEL THE DIFFERENCE © 2017 Courtesy of Art Gallery Quilts LLC. All Rights Reserved.



## Block 1

Fabric <b>A</b>	IFL-56302	F8
Fabric <b>B</b>	IFL-56309	F8

Fabric <b>A</b>	IFL-56302	F8
Fabric <b>B</b>	IFL-56309	F8

Fabric <b>A</b>	IFL-56302	F8
Fabric <b>B</b>	IFL-56309	F8

Fabric <b>A</b>	IFL-56302	F8
Fabric <b>B</b>	IFL-56309	F8

*1/4" seam allowances are included.  
WOF means width of fabric.*

- Twenty (20)  $2'' \times 2''$  squares from fabric **A**.
- Two (2)  $6\frac{1}{2}'' \times 2''$  rectangles from fabric **A**.
- Two (2)  $3\frac{1}{2}'' \times 2''$  rectangles from fabric **A**.
- Eight (8)  $3\frac{1}{2}'' \times 2''$  rectangles from fabric **B**.
- One (1)  $3\frac{1}{2}'' \times 3\frac{1}{2}''$  square from fabric **B**.

*Sew all rights sides together with ¼" seam allowance.*

- Take eight (8) 3½" x 2" rectangles from fabric **B** and sixteen (16) 2" x 2" squares from fabric **A**.
- Do eight (8) flying geese of each combination.



x 8

DIAGRAM 1

- Take four (4) 2" x 2" squares from fabric **A** and join them to the flying geese as follows:
- Fabric **A** > flying geese > flying geese > Fabric **A**.
- Do two (2) of each combination.



x 2

DIAGRAM 2

- Take two (2)  $3\frac{1}{2}'' \times 2''$  rectangles from fabric **A** and one  $3\frac{1}{2}'' \times 3\frac{1}{2}''$  square from fabric **B**.
- **A** > **B** > **A**.



DIAGRAM 3

- Take two (2) 6½" x 2" rectangle from fabric **A**.
- Join them to the block following Diagram 4.





DIAGRAM 4

- Take the four (4) flying geese left from each combination.
- Join them to the block following Diagram 5.

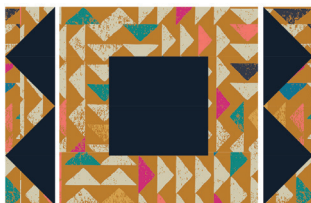


DIAGRAM 5

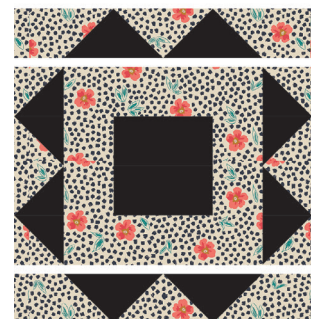


DIAGRAM 6





[artgalleryfabrics.com](http://artgalleryfabrics.com)

*NOTE: While all possible care has been taken to ensure the accuracy of this pattern, We are not responsible for printing errors or the way in which individual work varies. Please read instructions carefully before starting the construction of this quilt. If desired, wash and iron your fabrics before starting to cut.*

© 2017 Courtesy of Art Gallery Quilts LLC. All Rights Reserved.