

## A vibrant, handcrafted tote bag is displayed against a rustic, moss-covered stone wall. The bag features a complex design with a central panel of dark fabric adorned with colorful floral and geometric patterns. This central panel is flanked by wide, frayed borders in shades of pink, yellow, and white. Two sturdy, light brown leather straps are attached to the top of the bag, hanging from a thin wooden branch. The overall aesthetic is bohemian and artisanal.



# Galatea



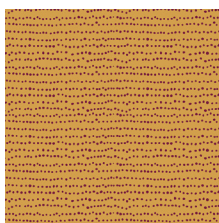
## INDIEfolk

FABRICS DESIGNED BY PAT BRAVO

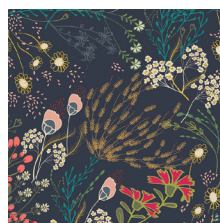
MEMORIES



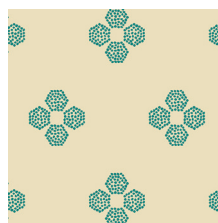
IFL-46300  
KHOKHLOMA BURGUNDIA



IFL-46301  
FLECKS AUBURN



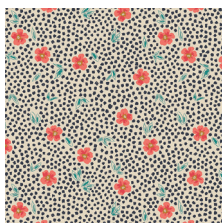
IFL-46302  
MEADOW DIM



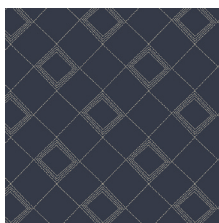
IFL-46303  
DROPLET PETAL MALACHITE



IFL-46304  
TRINKET VIVID



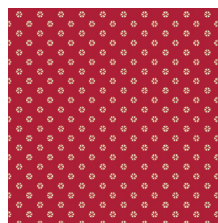
IFL-46305  
MIST FLORA LUMINOUS



IFL-46307  
TARTAN MIDNIGHT



IFL-46308  
VERDANT BLOOM



IFL-46309  
WHIRL ROUGE

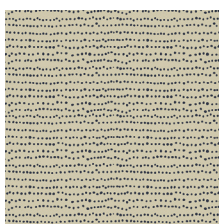


IFL-46310  
TRŌJKAT SUNRISE

FABLES



IFL-56300  
KHOKHLOMA GLOOM



IFL-56301  
FLECKS INDIGO



IFL-56302  
MEADOW VIVID



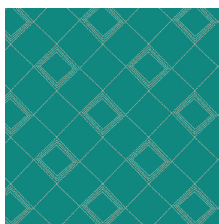
IFL-56303  
DROPLET PETAL STORM



IFL-56304  
TRINKET BLUSH



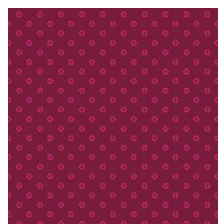
IFL-56306  
PATHWAYS RICH



IFL-56307  
TARTAN TEAL



IFL-56308  
POWDER BLOOM



IFL-56309  
WHIRL MAUVE



IFL-56310  
TRŌJKAT DESERT



FEEL THE DIFFERENCE © 2015 Courtesy of Art Gallery Quilts LLC. All Rights Reserved.

# Galatea

FINISHED SIZE | 19 1/2' x 16' x 7'

## FABRIC REQUIREMENTS

Fabric A	DEN-OYD-6002	7/8 yd.
Fabric B	C-56300	3/8 yd.
Fabric C	IFL-56301	1/6 yd.
Fabric D	PE-421	1/4 yd.
Fabric E	PE-427	7/8 yd.
Fabric F	PE-428	1/6 yd.
Fabric G	Faux Leather	1/8 yd.

### LINING FABRIC

E- PE-427(Included)

## CUTTING DIRECTIONS

1/4" seam allowances are included.  
WOF means width of fabric.

Fabric A: Cut two (2) of Pattern Piece 1

Cut two (2) strips of 7 1/2" x 16 1/2"

Cut one (1) strip of 20" x 7 1/2"

Fabric B: Cut one (1) of Pattern Piece 2

Fabric C: Cut four (4) strips of 1" x 16"

Cut four (4) strips of 1" x 14"

Cut eight (8) strips of 1" x 4 1/4"

Fabric D: Cut four (4) strips of 1" x 16"

Cut five (5) strips of 1" x 14"

Cut eight (8) strips of 1" x 4 1/4"

Cut twelve (12) of rectangles 1 1/2" x 2 1/2"

Fabric E: Cut fourteen (14) of rectangles 1 1/2" x 2 1/2"

Fabric F: Cut twenty six (26) perfect squares of 1 7/8"

Fabric G: Cut four (4) strips of 26 1/2" x 1" ( straps)

## CONSTRUCTION

Sew all rights sides together with 1/4" seam allowance.

### FRONT

- Start with the construction of the Flying Geese
- Place a marked 1 7/8" square from Fabric F right sides together on the left side of a 1-1/2" x 2-1/2" rectangle from Fabric D as shown.
- Stitch on the drawn line. Trim seam allowance to 1/4". Press corner open. In the same manner, sew a 1 7/8" square to the remaining corner, trim and press.

- You will have a total of 12 flying geese
- Repeat the same process with Fabric E  
1-1/2" x 2-1/2" rectangle and Fabric F 1 7/8" perfect square.
- You will have a total of 14 flying geese E

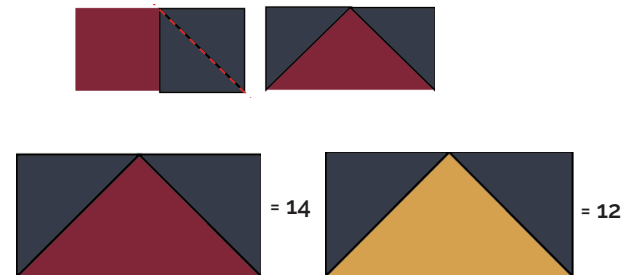


DIAGRAM 1

- Now, take assemble the flying geese as Diagram below:



DIAGRAM 2

- Make a zig-zag stitch all around the piece
- Then, take Fabric B and place both strips, wrong side facing down, and stitch.



DIAGRAM 3



- Now, take all the strips from fabrics **C & D** and start fraying the edges.
- Once you have frayed all edges, place the strips on the Fabric **A** piece in the following order.
- Leave about  $\frac{7}{8}$ " distance on both sides.



DIAGRAM 4

- Trim excess fabric

## BACK

- Take the remaining frayed strips and place them on the Fabric **A** piece.
- Start with the 1" x 14" horizontal strips from Fabric **C & D** as image below
- Start by placing one strip of Fabric **D** at about  $\frac{7}{8}$ " from the top of the bag.
- Sew around the edges.

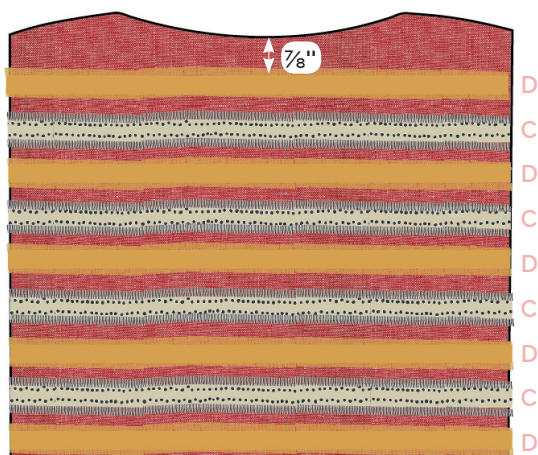


DIAGRAM 5

- Now, take the remaining 1" x 16" frayed strips and place them on the Fabric **A** piece as diagram below.
- Leave about  $\frac{7}{8}$ " distance on both sides.



DIAGRAM 6

- Now, take both 7 1/2" x 16 1/2" and 7 1/2" x 20" Fabric **A** pieces and sew them together to create a long strip.
- Sew it in the following way:

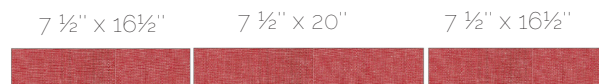


DIAGRAM 7

- Now, take the strip and pin it around the edge of the Front Side of the bag, wrong sides together.
- Sew.
- Then, take the back side of the bag and pin it with the other edge piece, wrong sides together.

## Sewing the Lining to the Exterior

- Place exterior of bag inside lining making sure right sides are touching.
- Pin lining to the exterior of the bag and sew all the way around the top of your bag at 1/2" seam allowance.
- Pull exterior of bag through the unsewn portion in the lining. Handstitch or machine stitch unsewn portion closed.

## Creating The Straps

- Take two (2) 26 ½" x 1" strips from Fabric G and place them wron sides facing.
- Top stitch around the edges.
- Repeat the same process for the other two (2) strips.
- Pin in place and sew a 2" x ¾" rectangle in each end of strap to secure straps to bag



DIAGRAM 8



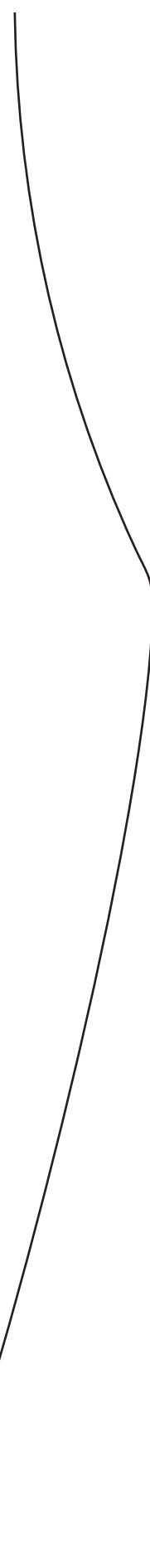
[artgalleryfabrics.com](http://artgalleryfabrics.com)

NOTE: While all possible care has been taken to ensure the accuracy of this pattern, We are not responsible for printing errors or the way in which individual work varies. Please read instructions carefully before starting the construction of this quilt. If desired, wash and iron your fabrics before starting to cut.

© 2017 Courtesy of Art Gallery Quilts LLC. All Rights Reserved.

## Add 1/4" seam

XX



# Pattern 1

## Add 1/4" seam







Pattern 1

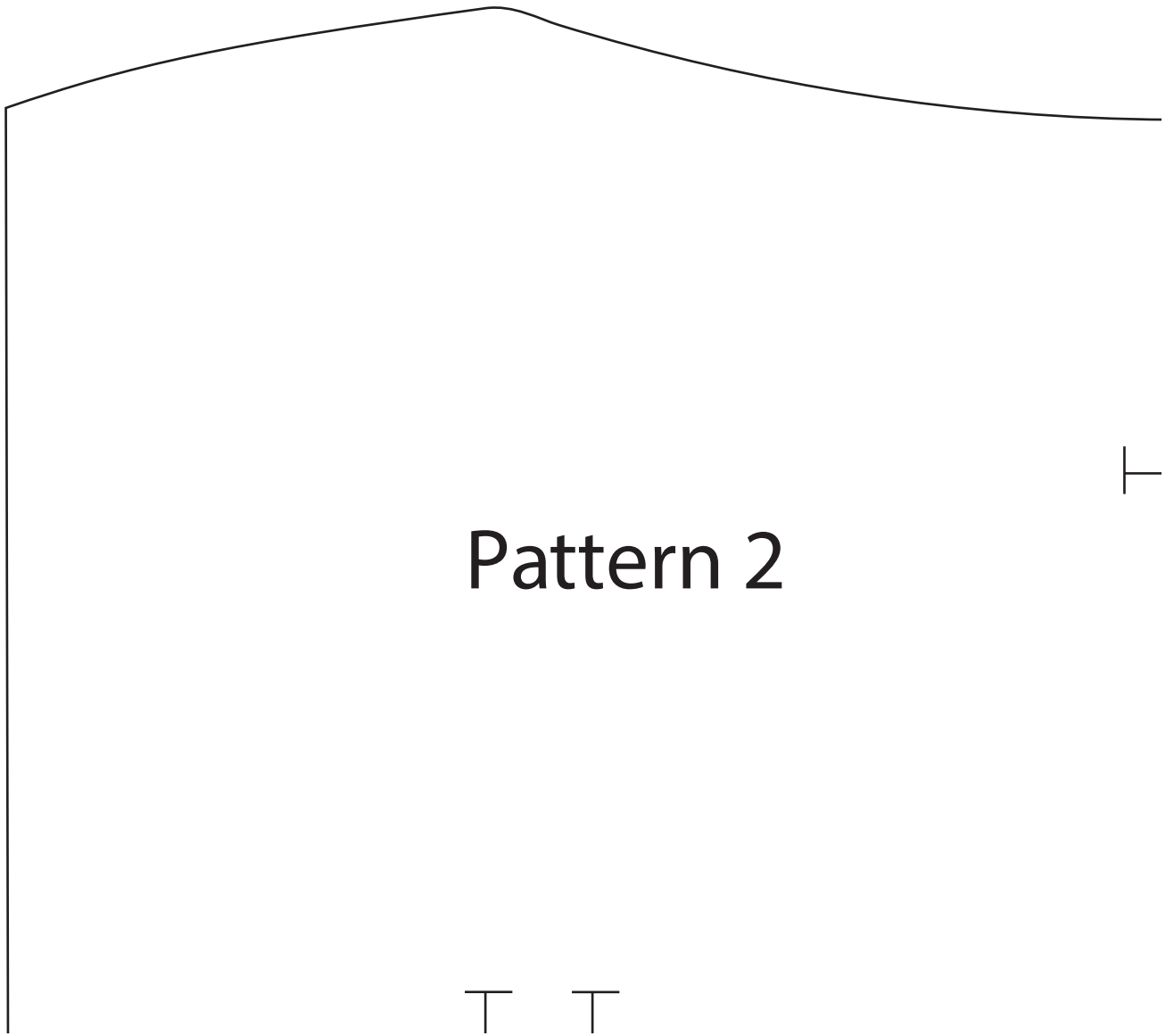
Add 1/4" seam

T

## Add 1/4" seam

## Add 1/4" seam

	T	
--	---	--



## Pattern 2



---



T T

—

---



—



## Pattern 2