

# Fianna



FREE PATTERN

XXXXXXXXXXXXXXXXXXXXXXXXXXXX





# Fianna

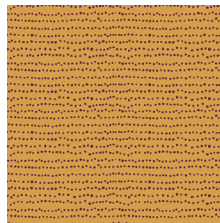
## INDIEfolk

FABRICS DESIGNED BY PAT BRAVO

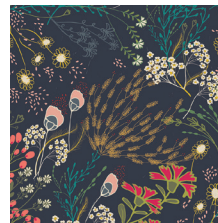
MEMORIES



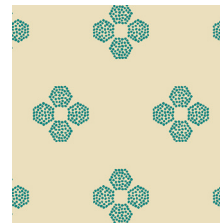
IFL-46300  
KHOKHLOMA BURGUNDIA



IFL-46301  
FLECKS AUBURN



IFL-46302  
MEADOW DIM



IFL-46303  
DROPLET PETAL MALACHITE



IFL-46304  
TRINKET VIVID



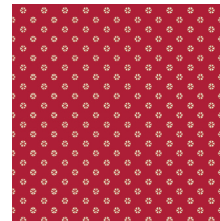
IFL-46305  
MIST FLORA LUMINOUS



IFL-46307  
TARTAN MIDNIGHT



IFL-46308  
VERDANT BLOOM



IFL-46309  
WHIRL ROUGE

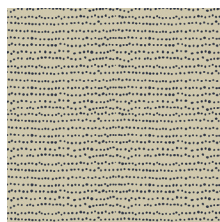


IFL-46310  
TRÖJKAT SUNRISE

FABLES



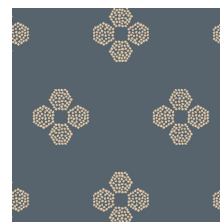
IFL-56300  
KHOKHLOMA GLOOM



IFL-56301  
FLECKS INDIGO



IFL-56302  
MEADOW VIVID



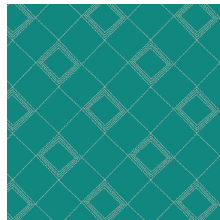
IFL-56303  
DROPLET PETAL STORM



IFL-56304  
TRINKET BLUSH



IFL-56306  
PATHWAYS RICH



IFL-56307  
TARTAN TEAL



IFL-56308  
POWDER BLOOM



IFL-56309  
WHIRL MAUVE



IFL-56310  
TRÖJKAT DESERT



FEEL THE DIFFERENCE © 2015 Courtesy of Art Gallery Quilts LLC. All Rights Reserved.









DIAGRAM 1

- Now, before you cut all the shapes, make sure to first place for each F8 a steam-a-seam fusible, so when you cut all the pieces, they are ready to be ironed to the base of the clutch.
- Once you have your pieces cut out, follow the diagram below for the first part of your clutch.

*Remember, you can always change, flip and/or modify the sizes and colors of the pieces.*

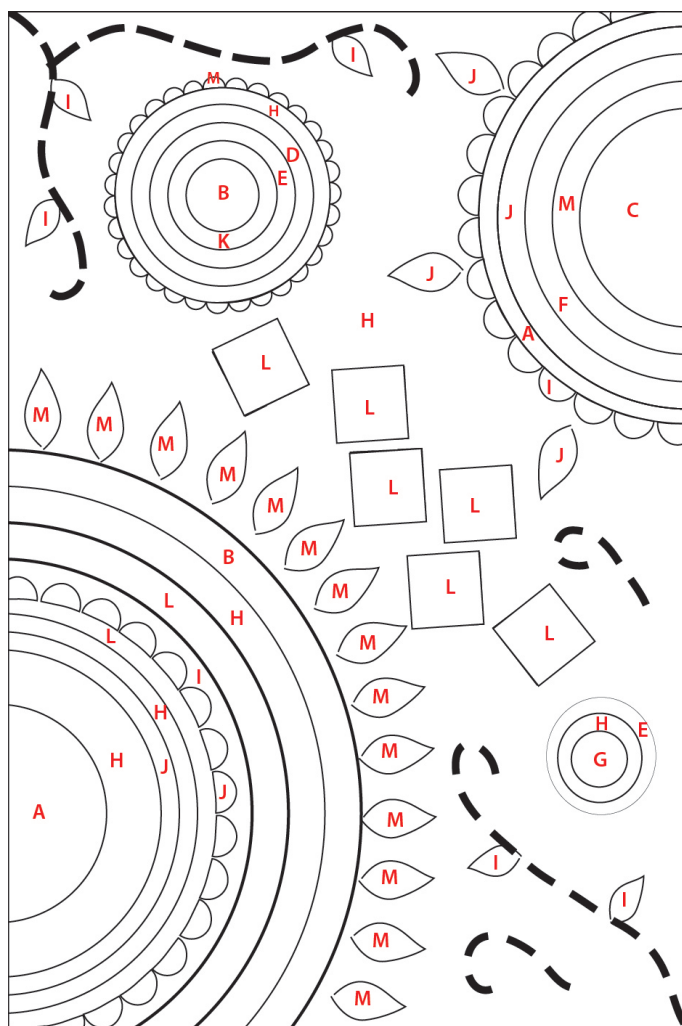


DIAGRAM 2

- Hand stitch the beads on the Fabric L squares, Fabric M, I and J leaves
- Use use decorative thread to handstitch the black decor you see in diagram above.
- In order to secure the Circle1 and Circle2 pieces, top stitch on the corner with a matching thread.



DIAGRAM 3



- Before you start placing the other pieces on the rest of the clutch, take Circle5 pieces and cut them in half, in order to have a total of 4 half circles.
- Now, follow Diagram below :

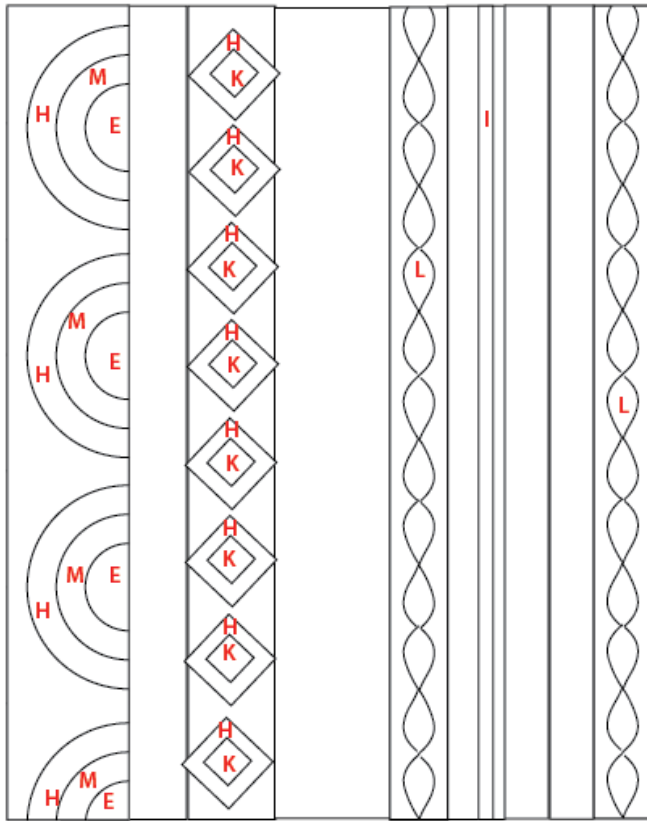


DIAGRAM 4

- Top stitch the applique with matching thread.

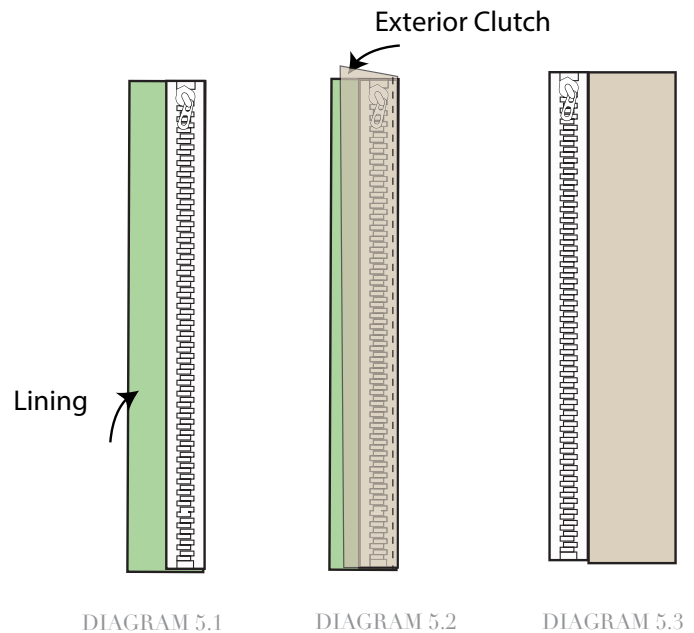
### Zipper Construction

Insert your zipper foot-

- Take lining and front clutch and sandwich them inbetween your 12" zipper.
- Using a zipper foot sew as close to the zipper teeth as possible.
- Sew the two pieces of fabric with right sides together with the zipper sandwiched inbetween the two pieces of fabric (Diagram 5.1 and 5.2)

XXXXXXXXXXXXXXXXXXXXXXXXXXXXXXXXXXXX

- Press fabric away from zipper and edge stitch the seam allowance to the lining sewing as close the edge as possible..
- Repeat process for the other side of the zipper using your other lining piece and back clutch.



- Unzip zipper. Take the two fronts of the clutch and pin right sides together.
- Take the lining pieces and pin right sides together.
- Now you can sew all the way around leaving the bottom portion of the lining of the clutch, that way you don't damage your applique.
- Pull right side of the fabric through the unsewn portion. Hand stitch or machine stitch unsewn portion closed.
- Press and enjoy!!!



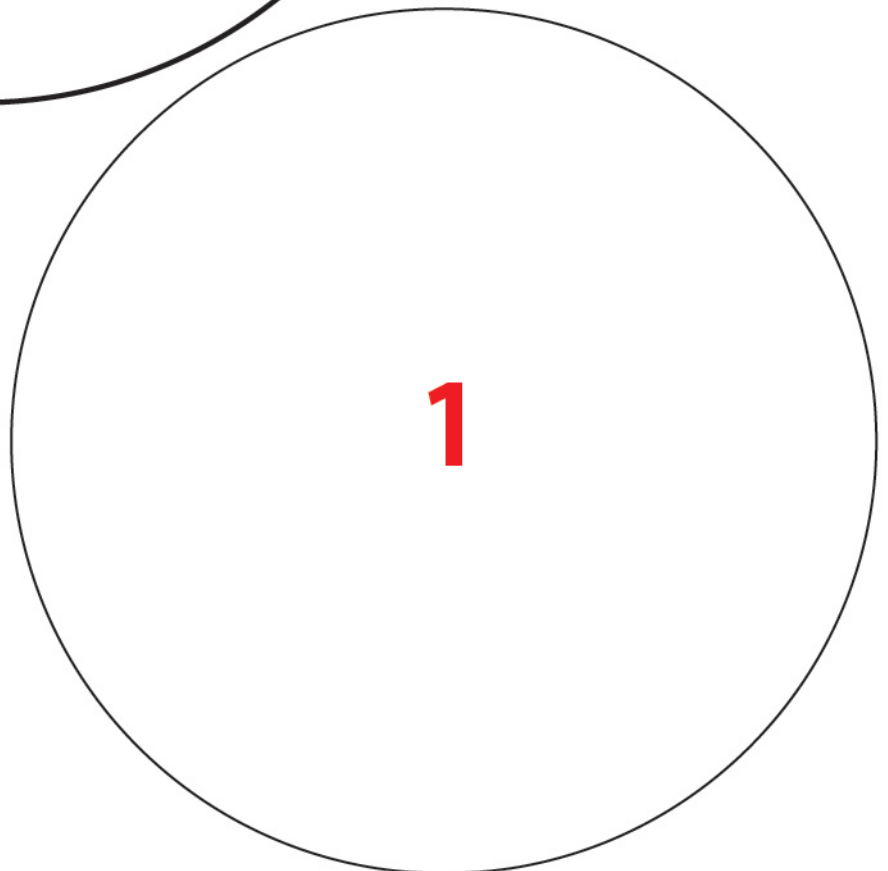
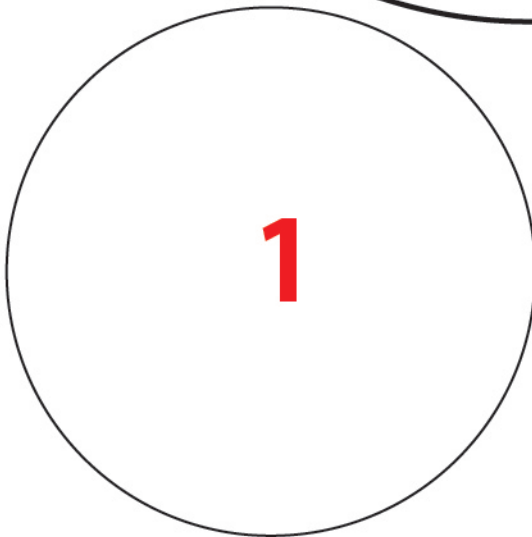
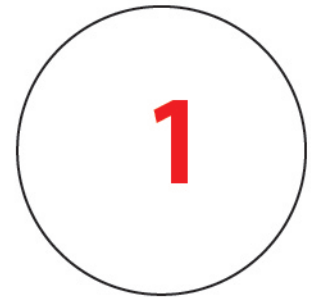
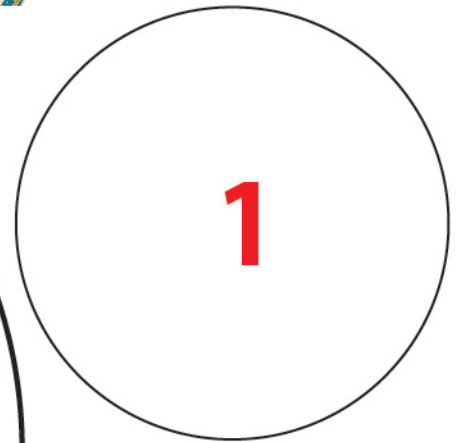
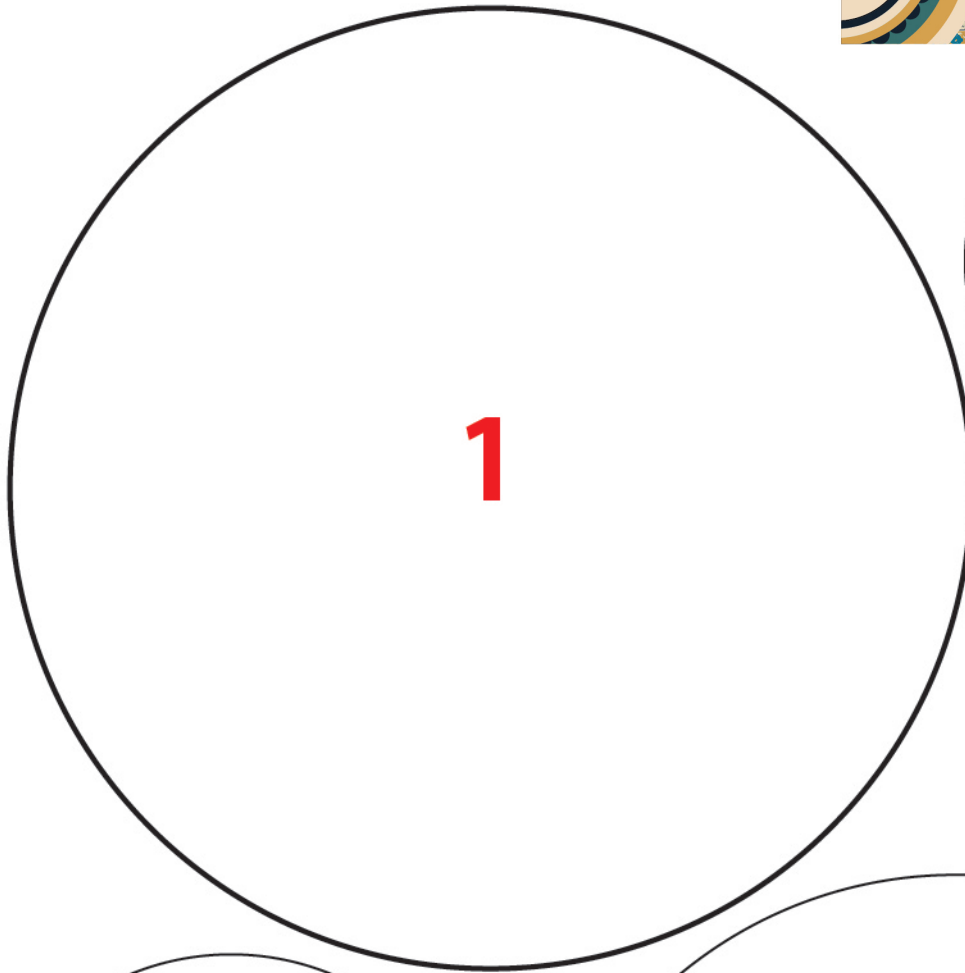


[artgalleryfabrics.com](http://artgalleryfabrics.com)

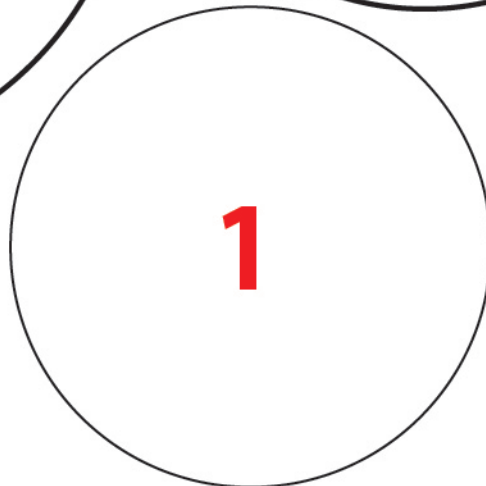
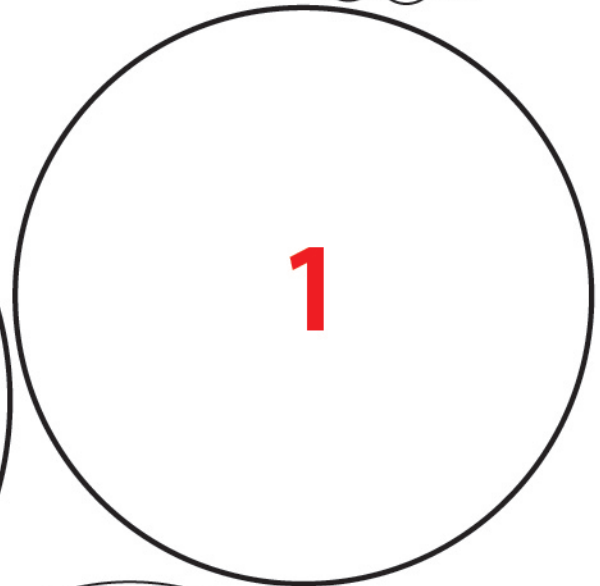
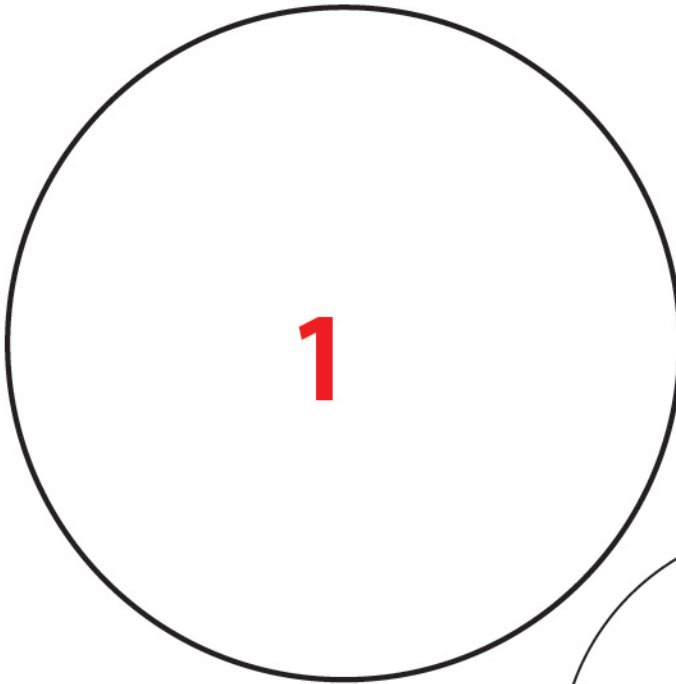
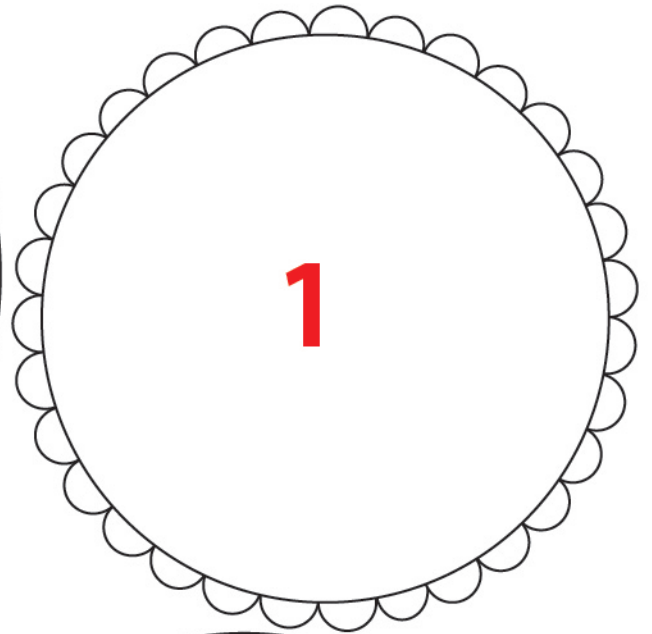
NOTE: While all possible care has been taken to ensure the accuracy of this pattern, We are not responsible for printing errors or the way in which individual work varies. Please read instructions carefully before starting the construction of this quilt. If desired, wash and iron your fabrics before starting to cut.

© 2017 Courtesy of Art Gallery Quilts LLC. All Rights Reserved.

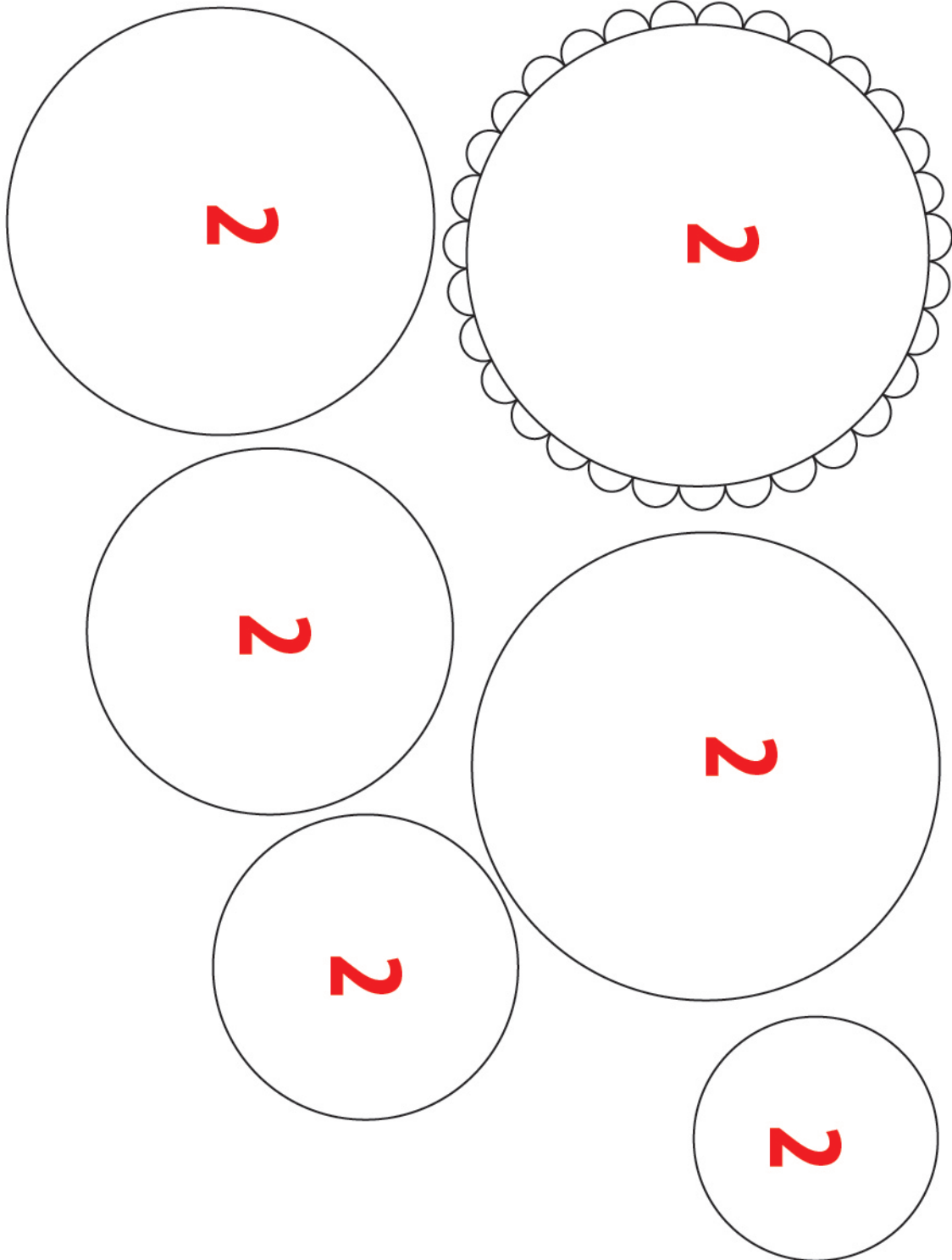




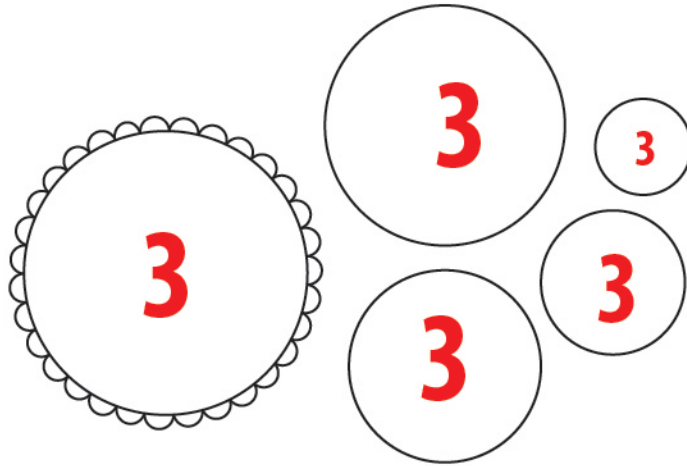




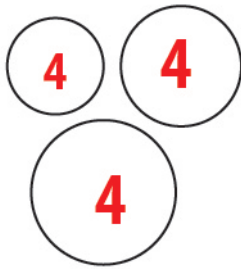




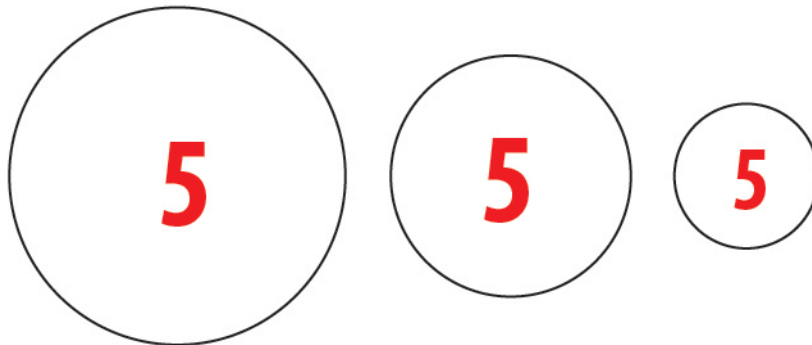




# Circle 4



# Circle 5



# Leaf1



# Leaf2



# Leaf3



# Leaf\_strip

