



CERATOPSIA



FABRICS DESIGNED BY KATARINA ROCCELLA

EXOTICARIA



EST-76500
CAMOUFLAGE MIMICRY



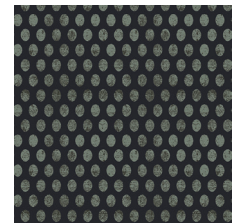
EST-76501
AMBERED BUGS STONE



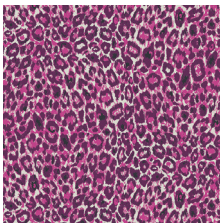
EST-76502
TROPICALIA LIGHT



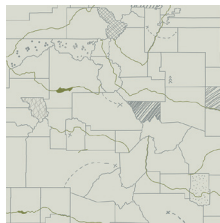
EST-76503
DINOMANIA SUBTLE



EST-76504
STRAIGHT HATCH LAVA



EST-76505
LEOPARDESS



EST-76508
DINOTRAILS DAY



EST-76509
PLANTAE SUNRISE

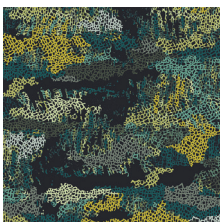


EST-76510
TRICERATOPS PINK

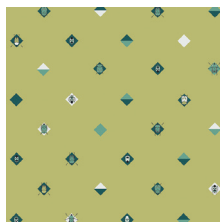


EST-76511
DINOSAURIA

ANOMALIA



EST-86500
CAMOUFLAGE PRETENSE



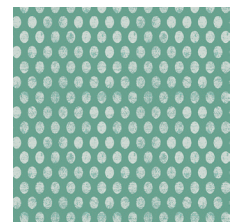
EST-86501
AMBERED BUGS KAKI



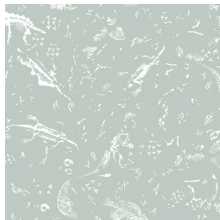
EST-86502
TROPICALIA DARK



EST-86503
DINOMANIA NEON



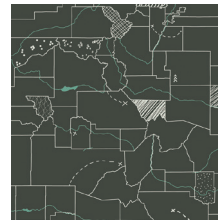
EST-86504
STRAIGHT HATCH AQUA



EST-86506
ARCHOSAUROSSILS



EST-86507
TRICERATOPS OLIVE



EST-86508
DINOTRAILS NIGHT



EST-86509
PLANTAE AURORA



EST-86510
TRICERATOPS PETROLIUM



FEEL THE DIFFERENCE © 2017 Courtesy of Art Gallery Quilts LLC. All Rights Reserved.

CERATOPSIA

FINISHED SIZE | 16" x 22"

FABRIC REQUIREMENTS

Fabric A	PE-428	$\frac{1}{3}$ yd.
Fabric B	EST-86502	$\frac{3}{4}$ yd.
Fabric C	PE-439	F8

BACKING FABRIC
EST-86502 (Included)

CUTTING DIRECTIONS

$\frac{1}{4}$ " seam allowances are included.
WOF means width of fabric.

- Two (2) 9" perfect squares from fabric **A**.
- Two (2) $7\frac{1}{2}$ " perfect squares from fabric **A**.
- Four (4) $13" \times 1\frac{1}{2}"$ strips from fabric **A**.
- One (1) $3\frac{1}{2}"$ perfect square from Fabric **B**.
- Four (4) $14\frac{1}{2}" \times 3\frac{1}{2}"$ rectangles from Fabric **B**.
- Four (4) $10" \times 2\frac{1}{4}"$ rectangles from Fabric **B**.
- One (1) Dinosaur Pattern from Fabric **C**.

CONSTRUCTION

Sew all rights sides together with $\frac{1}{4}$ " seam allowance.

- Take one (1) $3\frac{1}{2}" \times 14\frac{1}{2}"$ rectangle from Fabric **B** and pair it with a $3\frac{1}{2}"$ perfect square from Fabric **B**
- Then, take an 9" perfect square from Fabric **A** and pair it with another $3\frac{1}{2}" \times 14\frac{1}{2}"$ rectangle from Fabric **B**

XXXXXXXXXXXXXXXXXXXXXXXXXXXXXXXXXXXX



DIAGRAM 1



DIAGRAM 2

- Now, pair the two pieces as diagram below:



DIAGRAM 3

- Now, take one (1) $7\frac{1}{2}$ " perfect square from fabric **A** and pair it with one $10" \times 2\frac{1}{4}"$ rectangle from fabric **B**.
- Take another $10" \times 2\frac{1}{4}"$ rectangle and pair it on the other end. (diagram below)

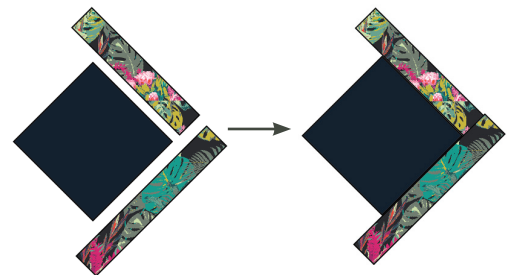


DIAGRAM 4

- Now, take one (1) 13" x 1½" strip from Fabric **A** and pair it next to Fabric **B** strip.
- Pair another Fabric **A** strip on the other edge
- Then, take one (1) 14" x 3½" rectangle from Fabric **B** on the bottom edge of the piece (Diagram below)

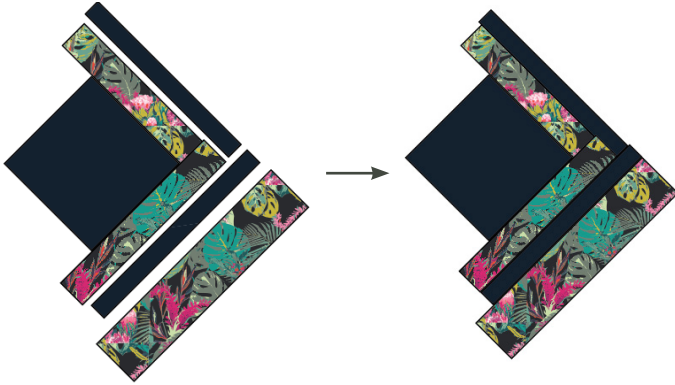


DIAGRAM 5

- Repeat same process but in mirror effect.
- Take an 9" perfect square from Fabric A and pair it at the bottom edge of the piece



DIAGRAM 6

- Now, go back to your first piece, pair it with the left side piece and assemble them as Diagram shown



DIAGRAM 7

- Now, pair both assembled pieces
- Quilt as desired



DIAGRAM 8

- Trim pillow to a 16½" x 22½" rectangle
- Take the Dinosaur Pattern and place Steam-a-Seam double side fusible tape and place the Pattern on the middle of the pillow, using your 3½" perfect square as your center guide



DIAGRAM 9



DIAGRAM 10

CREATING THE BACK PILLOW

*Sew all rights sides together with $\frac{1}{4}$ " seam allowance.
Press open.*

- To make a envelope back for your pillow take both $16\frac{1}{2}$ ' x 18' rectangles and fold one 18' side on each rectangle in $\frac{1}{2}$ ' and press and then fold another $\frac{1}{2}$ ' and press.
- Top stitch as close to the edge as possible.
- Place rectangles right side together on top of each other to the front of your pillow and stitch all the way around your pillow at $\frac{1}{4}$ ' seam allowance.
- Clip corners at seam allowance and flip piece to the right side of the fabric.
- Fill pillow with a 16" x 22" pillow form and enjoy!

XXXXXXXXXXXXXXXXXXXXXXXXXXXXXXXXXXXX

Congratulations & enjoy

XXXXXXXXXXXXXXXXXXXXXXXXXXXXXXXXXXXX



artgalleryfabrics.com

NOTE: While all possible care has been taken to ensure the accuracy of this pattern, We are not responsible for printing errors or the way in which individual work varies. Please read instructions carefully before starting the construction of this quilt. If desired, wash and iron your fabrics before starting to cut.

