

XXXXXX

## A vibrant, multi-colored patchwork quilt is draped over a stone wall in a garden setting. The quilt features a variety of patterns including floral, geometric, and abstract designs in shades of red, yellow, blue, and green. A potted plant with large green leaves sits on the quilt. In the foreground, a cup of tea is visible on a small table.

XXXXXXXXXXXXXXXXXXXXXXXXXXXX





# ALEGOR

QUILT DESIGNED BY AGF STUDIO

## INDIEfolk

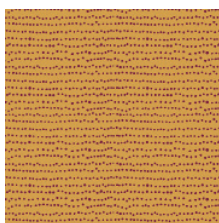
FABRICS DESIGNED BY PAT BRAVO



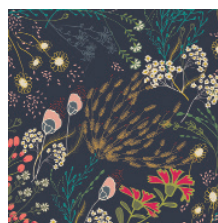
MEMORIES



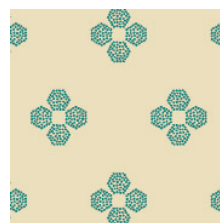
IF1-46300  
KHOKHLOMA BURGUNDIA



IF1-46301  
FLECKS AUBURN



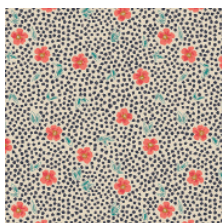
IF1-46302  
MEADOW DIM



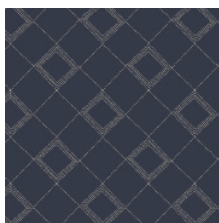
IF1-46303  
DROPLET PETAL MALACHITE



IF1-46304  
TRINKET VIVID



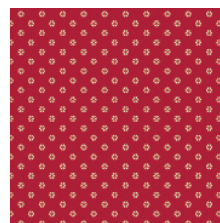
IF1-46305  
MIST FLORA LUMINOUS



IF1-46307  
TARTAN MIDNIGHT



IF1-46308  
VERDANT BLOOM

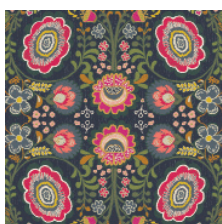


IF1-46309  
WHIRL ROUGE



IF1-46310  
TRŌJKAT SUNRISE

FABLES



IF1-56300  
KHOKHLOMA GLOOM



IF1-56301  
FLECKS INDIGO



IF1-56302  
MEADOW VIVID



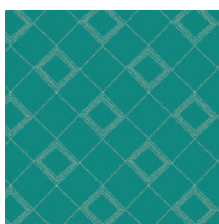
IF1-56303  
DROPLET PETAL STORM



IF1-56304  
TRINKET BLUSH



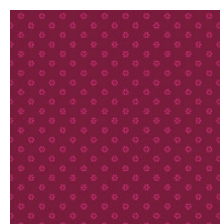
IF1-56306  
PATHWAYS RICH



IF1-56307  
TARTAN TEAL



IF1-56308  
POWDER BLOOM



IF1-56309  
WHIRL MAUVE



IF1-56310  
TRŌJKAT DESERT



FEEL THE DIFFERENCE ©2015 Courtesy of Art Gallery Quilts LLC. All Rights Reserved.

FINISHED SIZE | 20" x 60"

## FABRIC REQUIREMENTS

Fabric <b>A</b>	IFL-46300	$\frac{3}{8}$ yd.
Fabric <b>B</b>	IFL-46301	$\frac{3}{8}$ yd.
Fabric <b>C</b>	IFL-46307	$\frac{1}{4}$ yd.
Fabric <b>D</b>	IFL-46309	$\frac{1}{8}$ yd.
Fabric <b>E</b>	IFL-46310	$\frac{1}{2}$ yd.
Fabric <b>F</b>	IFL-56304	$\frac{1}{4}$ yd.
Fabric <b>G</b>	IFL-56308	$\frac{3}{8}$ yd.
Fabric <b>H</b>	IFL-56309	$\frac{1}{8}$ yd.

### BACKING FABRIC

IFL-46300 1 yds. (*Suggested*)

### BINDING FABRIC

IFL-46310 (Fabric **E**) (*included*)

## CUTTING DIRECTIONS

$\frac{1}{4}$ " seam allowances are included.  
WOF means width of fabric.

- Fabric **A**: Cut three (3)  $3\frac{1}{2}$ " x WOF
- Fabric **B**: Cut three (3)  $3\frac{1}{2}$ " x WOF
- Fabric **C**: Cut two (2)  $3\frac{1}{2}$ " x WOF
- Fabric **D**: Cut one (1)  $3\frac{1}{2}$ " x WOF
- Fabric **E**: Cut three (3)  $3\frac{1}{2}$ " x WOF
- Fabric **F**: Cut two (2)  $3\frac{1}{2}$ " x WOF
- Fabric **G**: Cut three (3)  $3\frac{1}{2}$ " x WOF
- Fabric **H**: Cut one (1)  $3\frac{1}{2}$ " x WOF

## CONSTRUCTION

Sew all right sides together with  $\frac{1}{4}$ " seam allowance.

- Cut and sew the top together row by row. Cut little rectangles from the WOF strips to the lengths indicated in the row assembly below. Fabrics are identified by letter.

### Row 1

A.  $4\frac{1}{2}$ "

### Row 2

C.  $4\frac{1}{2}$ " > B.  $6\frac{1}{2}$ "

XXXXXXXXXXXXXXXXXXXXXXXXXXXXXXXXXXXX

### Row 3

A.  $6\frac{1}{2}$ " > G.  $5"$  > F.  $6"$

### Row 4

G.  $3\frac{1}{2}"$  > C.  $5"$  > E.  $6\frac{1}{2}"$  > D.  $9"$

### Row 5

B.  $6\frac{1}{2}"$  > A.  $9\frac{1}{2}"$  > C.  $5"$  > G.  $6\frac{1}{2}"$  > F.  $3"$

### Row 6

A.  $6\frac{1}{2}"$  > C.  $5"$  > G.  $9\frac{1}{2}"$  > A.  $6\frac{1}{2}"$  > E.  $5"$  > H.  $3\frac{1}{2}"$

### Row 7

C.  $8"$  > B.  $3\frac{1}{2}"$  > F.  $5"$  > E.  $6\frac{1}{2}"$  > B.  $9\frac{1}{2}"$  > A.  $5\frac{1}{2}"$

### Row 8

B.  $8"$  > D.  $8"$  > A.  $9\frac{1}{2}"$  > H.  $6\frac{1}{2}"$  > F.  $5\frac{1}{2}"$

### Row 9

H.  $6\frac{1}{2}"$  > F.  $3\frac{1}{2}"$  > G.  $8"$  > E.  $9\frac{1}{2}"$  > C.  $3\frac{1}{2}"$  > G.  $7"$

### Row 10

F.  $3\frac{1}{2}"$  > A.  $8"$  > B.  $8\frac{1}{2}"$  > A.  $4\frac{1}{2}"$  > F.  $6\frac{1}{2}"$  > E.  $7"$

### Row 11

G.  $5"$  > E.  $6\frac{1}{2}"$  > G.  $8"$  > H.  $5"$  > G.  $8"$  > C.  $5\frac{1}{2}"$

### Row 12

B.  $9\frac{1}{2}"$  > A.  $6\frac{1}{2}"$  > C.  $5"$  > A.  $3\frac{1}{2}"$  > F.  $8"$  > A.  $5\frac{1}{2}"$

### Row 13

G.  $6\frac{1}{2}"$  > H.  $5"$  > G.  $9\frac{1}{2}"$  > F.  $6\frac{1}{2}"$  > D.  $3\frac{1}{2}"$  > G.  $7"$

### Row 14

E.  $9\frac{1}{2}"$  > C.  $6\frac{1}{2}"$  > F.  $3\frac{1}{2}"$  > A.  $8"$  > B.  $10"$

### Row 15

C.  $6\frac{1}{2}"$  > G.  $9\frac{1}{2}"$  > B.  $5"$  > D.  $6\frac{1}{2}"$  > G.  $3\frac{1}{2}"$  > C.  $7"$

### Row 16

F.  $5"$  > A.  $9\frac{1}{2}"$  > E.  $6\frac{1}{2}"$  > A.  $5"$  > B.  $3\frac{1}{2}"$  > H.  $5\frac{1}{2}"$

### Row 17

D.  $6\frac{1}{2}"$  > F.  $5"$  > C.  $9\frac{1}{2}"$  > E.  $7"$

### Row 18

G.  $5"$  > B.  $9\frac{1}{2}"$  > G.  $7"$

### Row 19

H.  $6\frac{1}{2}"$  > A.  $8\frac{1}{2}"$

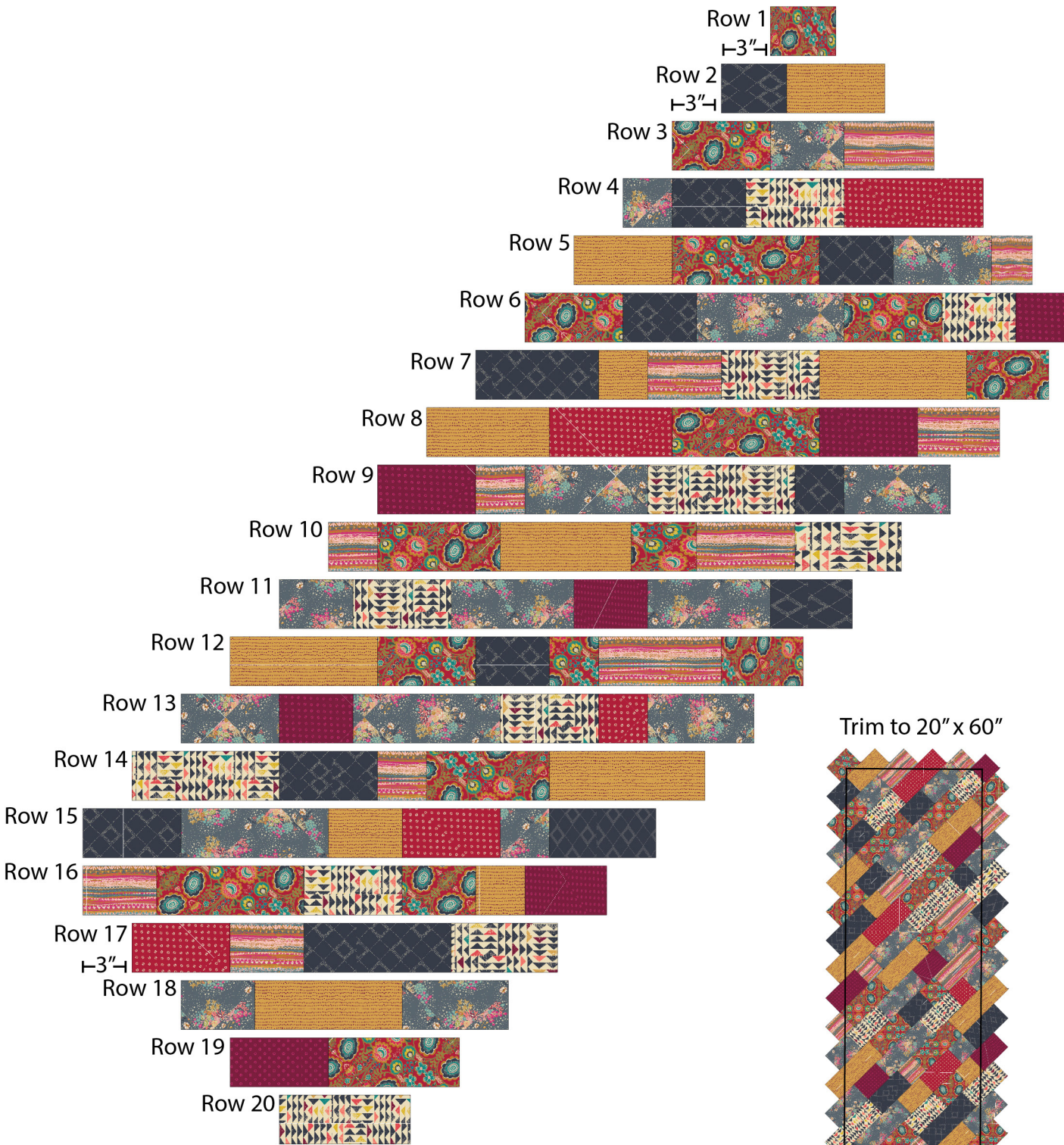
### Row 20

E.  $8\frac{1}{2}"$

- Sew the rows to each other as pictured in the assembly diagram. From Row 1-15 you will sew each row in ladder style, with a  $3"$  difference. Rows 15 and 16 should line up. Rows 17-20 will be  $3"$  step ladders in the opposite direction.
- Press & trim to a  $20"$  x  $60"$  rectangle.



Assembly Diagram



Trim to 20" x 60"



DIAGRAM 1

DIAGRAM 2

## QUILT ASSEMBLY

*Sew rights sides together.*

- © Cut your yard of Backing fabric in half width-wise and sew top to bottom to get a piece of fabric approximately 22' x 70'. Place BACKING FABRIC on a large surface wrong side up. Stretch it with masking tape against that surface.
- © Place BATTING on top of backing fabric.
- © Place TOP on top of the batting with right side facing up. Smooth away wrinkles using your hands.
- © Pin all layers together and baste with basting thread, using long stitches. You can also use safety pins to join the layers.
- © Do a machine stitch in the ditch every two rows before hand stitching to stabilize it. For hand-quilting I recommend a large running stitch in the middle of a row, then skip two rows and repeat. Do large embroidery Xs on the center seam of the two rows between.
- © After you finished, trim excess of any fabric or batting, squaring the quilt to proceed to bind it.



## BINDING

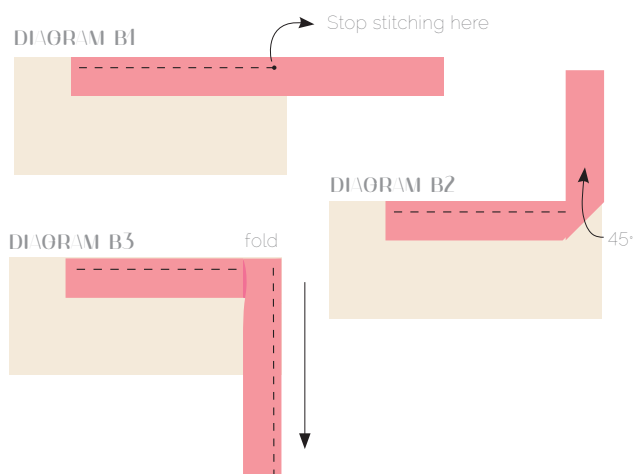
*Sew rights sides together.*

- Cut enough strips 1 ½' wide by the width of the fabric **H** to make a final strip 170' long. Fold strip in half and press. Start sewing the binding strip in the middle of one of the sides of the quilt, placing the strip right side down with the fold edge of your binding facing in and leaving an approximated 5' tail. Sew with ¼' seam allowance (using straight stitch), aligning the strip's raw edge with the quilt top's raw edge.
- © Stop stitching ¼' before the edge of the quilt (**DIAGRAM B 1**). Clip the threads. Remove the quilt from under the machine presser foot. Fold the strip in a motion of 45° and upward, pressing with your fingers (**DIAGRAM B2**). Hold this fold with your finger, bring the strip down in line with the next edge, making a horizontal fold that aligns with the top edge of the quilt (**DIAGRAM B3**).

© Start sewing at ¼' of the border, stitching all the layers. Do the same in the four corners of the quilt.

© Stop stitching before you reach the last 5 or 6 inches. Cut the threads and remove the quilt from under the machine presser foot. Lay the loose ends of the binding flat along the quilt edge, folding the ends back on themselves where they meet. Press them together to form a crease. Using this crease as the stitching line, sew the two open ends of the binding with right sides together (you can help yourself marking with a pencil if the crease is difficult to see).

© Trim seam to ¼' and press open. Complete the sewing. Turn binding to back of the quilt, turn raw edge inside and stitch by hand using blind stitch.



[artgalleryfabrics.com](http://artgalleryfabrics.com)

*NOTE: While all possible care has been taken to ensure the accuracy of this pattern, We are not responsible for printing errors or the way in which individual work varies. Please read instructions carefully before starting the construction of this quilt. If desired, wash and iron your fabrics before starting to cut.*

©2017 Courtesy of Art Gallery Quilts LLC. All Rights Reserved.