

Tree of Life



Tree of Life

DESIGNED BY AGF STUDIO



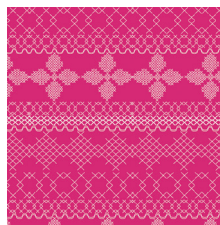
WILD bloom

FABRICS DESIGNED BY BARI J.

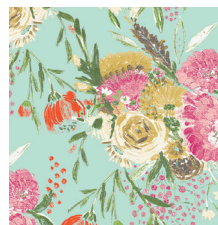
COME SHINE



WBL-12030
FLOWER SHOWER INTENSE



WBL-12031
CROSS & STITCH RASPBERRY



WBL-12032
SUMMER BOUQUET CLEAR



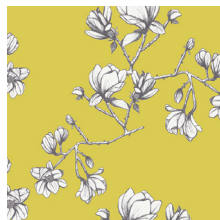
WBL-12033
LIVELY ROSEBUDS BURST



WBL-12034
CORSAGE CHARM PINK



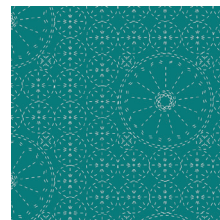
WBL-12035
LOWERFIELD SUNRISE



WBL-12036
MAGNOLIA STUDY ZEST



SGE-14457
EVERLASTING BLOOMS
CITRUS



SGE-14458
SASHIKO FLORETTE TEA

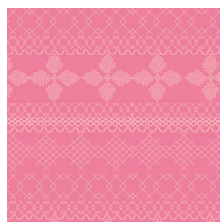


SGE-14459
STILL LIFE CRISP

COME RAIN



WBL-22030
FLOWER SHOWER SUBTLE



WBL-22031
CROSS & STITCH CANDY



WBL-22032
SUMMER BOUQUET POND



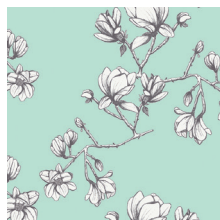
WBL-22033
LIVELY ROSEBUDS
CRYSTAL



WBL-22034
CORSAGE CHARM AQUA



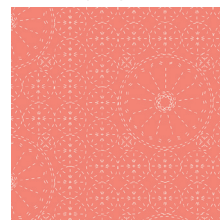
WBL-22035
FLOWERFIELD SUNSET



WBL-22036
MAGNOLIA STUDY FRESH



WBL-22037
EVERLASTING BLOOMS
BERRY



WBL-22038
SASHIKO FLORETTE CORAL



WBL-22039
STILL LIFE SWEET



FEEL THE DIFFERENCE © 2017 Courtesy of Art Gallery Quilts LLC. All Rights Reserved.



FABRIC REQUIREMENTS

Fabric A	WBL - 22031	1/2' yd
Fabric B	WBL- 12031	1/2' yd
Fabric C	WBL-22039	1/2' yd
Fabric D	WBL-22036	1/2' yd
Fabric E	WBL-12030	1 yd
Fabric F	WBL-22036	3/8' yd
Fabric G	DEN-S-2000	3 5/8' yd
Fabric H	PE-402	3 5/8' yd
Fabric I	PE - 451	FE
Fabric J	PE - 404	FE
Fabric K	PE - 420	FE
Fabric L	PE - 450	FE

BACKING FABRIC

PE- 402 (Fabric **H**)(Included)

BINDING FABRIC

PE-402 (Fabric **H**)(Included)

CUTTING DIRECTIONS

1/4" seam allowances are included.
WOF means width of fabric.

- **Fabric A:**
 - One (1) rectangle of 7 x WOF
 - One (1) rectangle of 7 x 9 1/4"
- **Fabric B:**
 - One (1) rectangle of 18 1/4 x 13 1/2"
- **Fabric C:**
 - One (1) rectangle of 7 x WOF
 - One (1) rectangle of 7 x 8 3/4"
- **Fabric D:**
 - One (1) rectangle of 7 x WOF
 - One (1) rectangle of 7 x 8 3/4"
- **Fabric E:**
 - Four (4) rectangles of 7 x WOF
 - Four (4) rectangle of 7 x 8 3/4"

XXXXXXXXXXXXXXXXXXXXXXXXXXXXXXXXXXXX

- One (1) rectangle of 7 x 33 1/4"
- **Fabric F:**
 - One (1) rectangle of 7 x 33 1/4"
- **Fabric G:**
 - Four (4) rectangles of 26" x 33"
- **Fabric H:**
 - Four (4) rectangles of 26 x 33" (backing)
 - Eleven (11) from template 2.
- **Fabric I:**
 - Five (5) from template 2..
- **Fabric J:**
 - Five (5) from template 2.
- **Fabric K:**
 - Six (6) from template 2.
- **Fabric L:**
 - Eight (8) from template 2.

CONSTRUCTION

Sew right sides together.

- Join Fabric **A, C, D, E** and **F** rectangles
- Refer to diagram 1 .

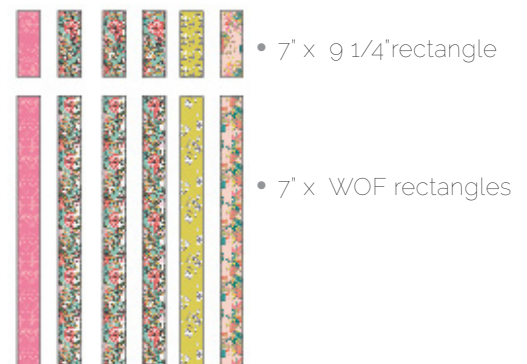


DIAGRAM 1

- Join Fabric **A**, **C**, **D**, **E**, and **F** rectangles as diagram shows.

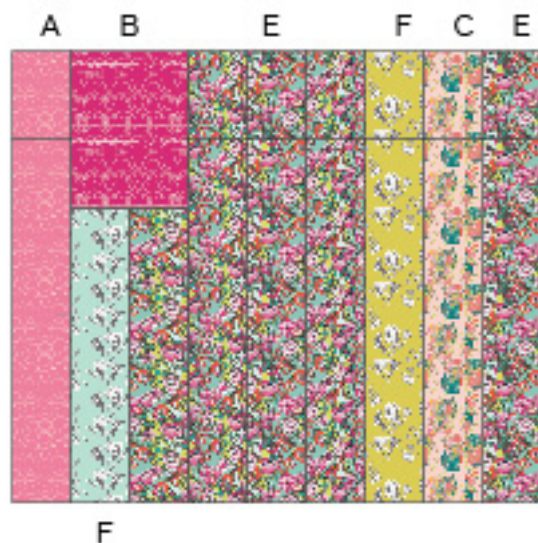


DIAGRAM 2

- Start joining Fabric **G** 26' x 33' rectangles creating a big square. This will be the front side of the quilt.
- Refer to diagram below:

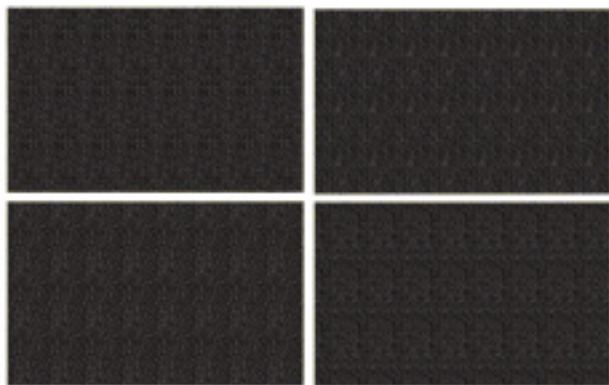


DIAGRAM 3

CUTTING YOUR TEMPLATE

- Follow the instructions to build your tree template in paper and transfer it to fabric. (Refer to last page for more guidance).
- Use tape to build the template.
- Once the template is taped together you can use a light box below fabric **G** and trace the template with a **fabric pen** (Make sure you mark the fabric with a **FABRIC** pen so the fabric is not damaged).
- If you don't have a light box, don't worry, it will take a bit longer but you can cut the tree and use it as a stencil.

- With a fabric pen trace around the cut areas on top of Fabric **G**.
- Use the diagram provided in the last page to build your reverse appliqué tree template.

QUILT ASSEMBLY

Sew right sides together:

- Place BACKING FABRIC on a large surface wrong side up. Stretch it with masking tape against that surface.
- Place BATTING on top of backing fabric.
- Place TOP on top of the batting with right side facing up. Smooth away wrinkles using your hands.
- Pin all layers together and baste with basting thread, using long stitches.
- Once the quilt assembly is done and the two layers of fabric are together, start quilting on top of fabric **G** the tree and spiral leaves. Be careful to get dizzy, just know that this quilt will become a work of art!
- Start quilting along the marked lines, shaping the tree. Remember that quilting motifs are a matter of personal preference and you can play with color threads and even make more spirals. (We would love to see an updated version made by you!).
- If you are working with a home machine you can also attach the template 2 triangles and if you wish, cut more of template 2 and place them along the quilt however you want!

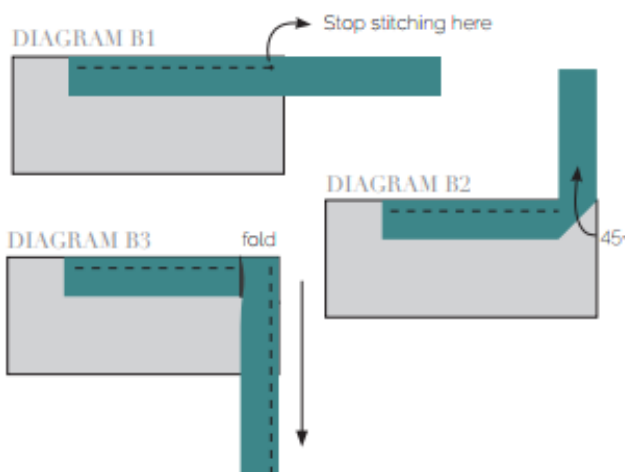
FINAL ASSEMBLY

- Once your quilting is done start with the cutting process. You can call a friend to come over for tea time and help you out with cutting fabric **G** tree!. It is amazing to see all your quilt taking more and more shape!
- Make sure you cut just the TOP fabric (Fabric **G**) pulling it a little and using small fabric scissors.
- Finally! your reverse quilt is done! Make sure to show it to everyone and enjoy it as a wall decor or bed spread!.

BINDING

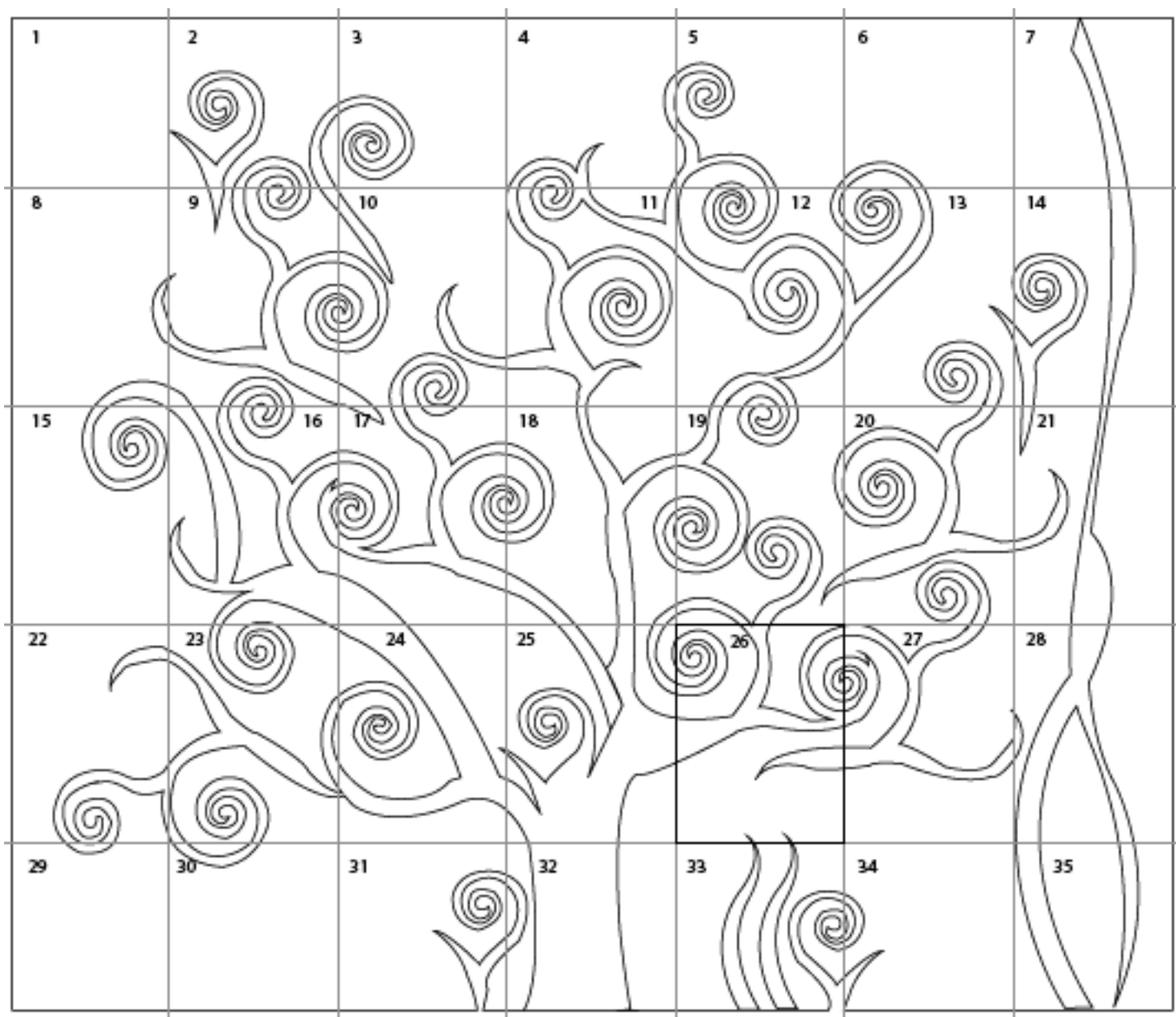
Sew rights sides together.

- Cut enough strips $1\frac{1}{2}$ ' wide by the width of the Fabric **G** to make a final strip 224' long. Start sewing the binding strip in the middle side of the quilt placing the strip right side down and leaving an approximated 5' tail. Sew with $\frac{1}{4}$ ' seam allowance (using straight stitch), aligning the strip's raw edge with the quilt top's raw edge.
- Stop stitching $\frac{1}{4}$ ' before the edge of the quilt (DIAGRAM B1). Clip the threads. Remove the quilt from under the machine presser foot. Fold the strip in a motion of 45° and upward, pressing with your fingers
- (DIAGRAM B2). Hold this fold with your finger, bring the strip down in line with the next edge, making a horizontal fold that aligns with the top edge of the quilt (DIAGRAM B3). Start sewing at $\frac{1}{4}$ ' of the border, stitching all the layers. Do the same in the four corners of the placemats.
- Stop stitching before you reach the last 5 or 6 inches. Cut the threads and remove the quilt from under the machine presser foot. Lay the loose ends of the binding flat along the quilt edge, folding the ends back on themselves where they meet. Press them together to form a crease. Using this crease as the stitching line, sew the two open ends of the binding with right sides together (you can help yourself marking with a pencil if the crease is difficult to see).
- Trim seam to $\frac{1}{4}$ ' and press open. Complete the sewing. Turn binding to back of the quilt, turn raw edge inside and stitch by hand using blind stitch.



PAPER TEMPLATE

- Use this diagram as a guide to tape the tree template



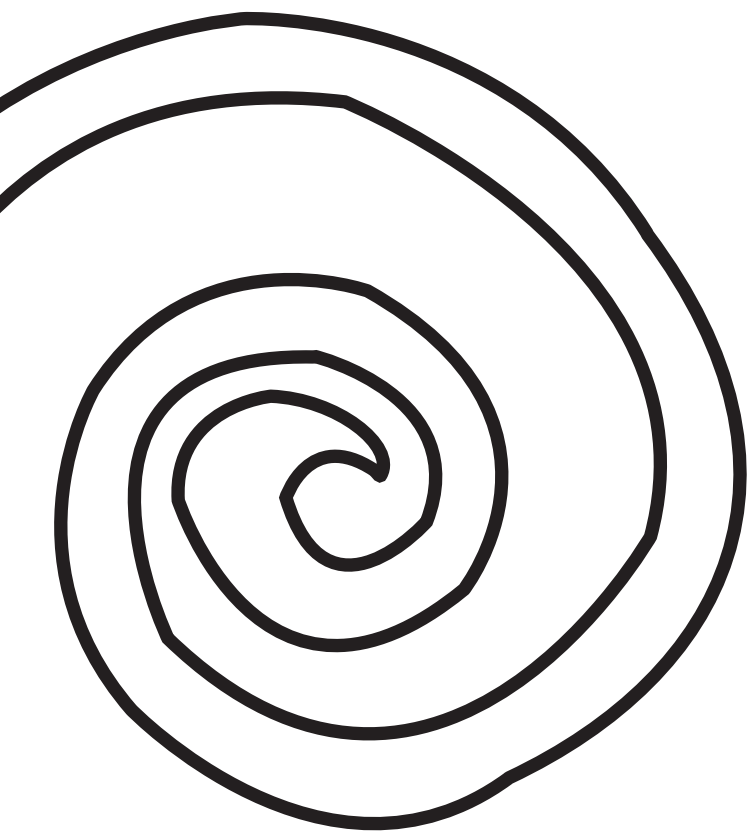


artgalleryfabrics.com

NOTE: While all possible care has been taken to ensure the accuracy of this pattern, We are not responsible for printing errors or the way in which individual work varies. Please read instructions carefully before starting the construction of this quilt. If desired, wash and iron your fabrics before starting to cut.

1

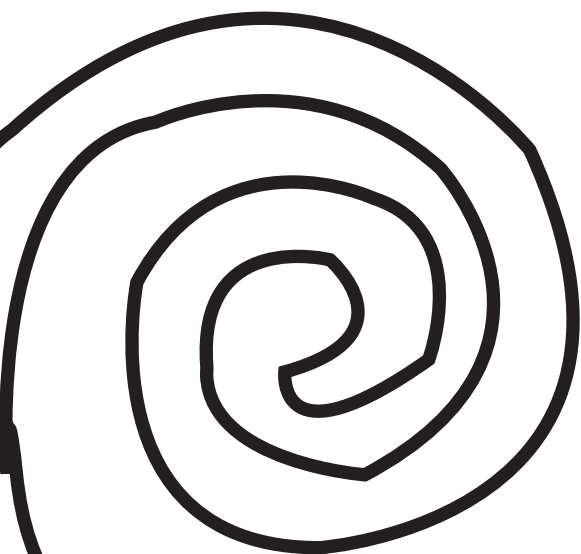
3



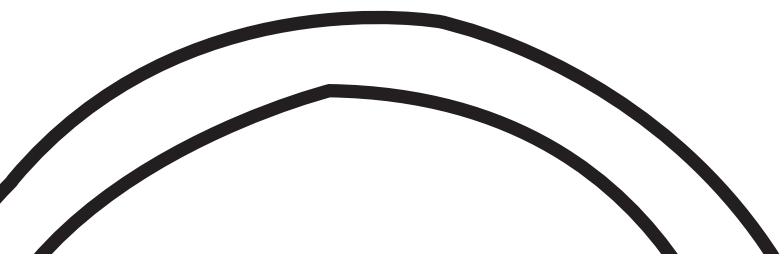
4



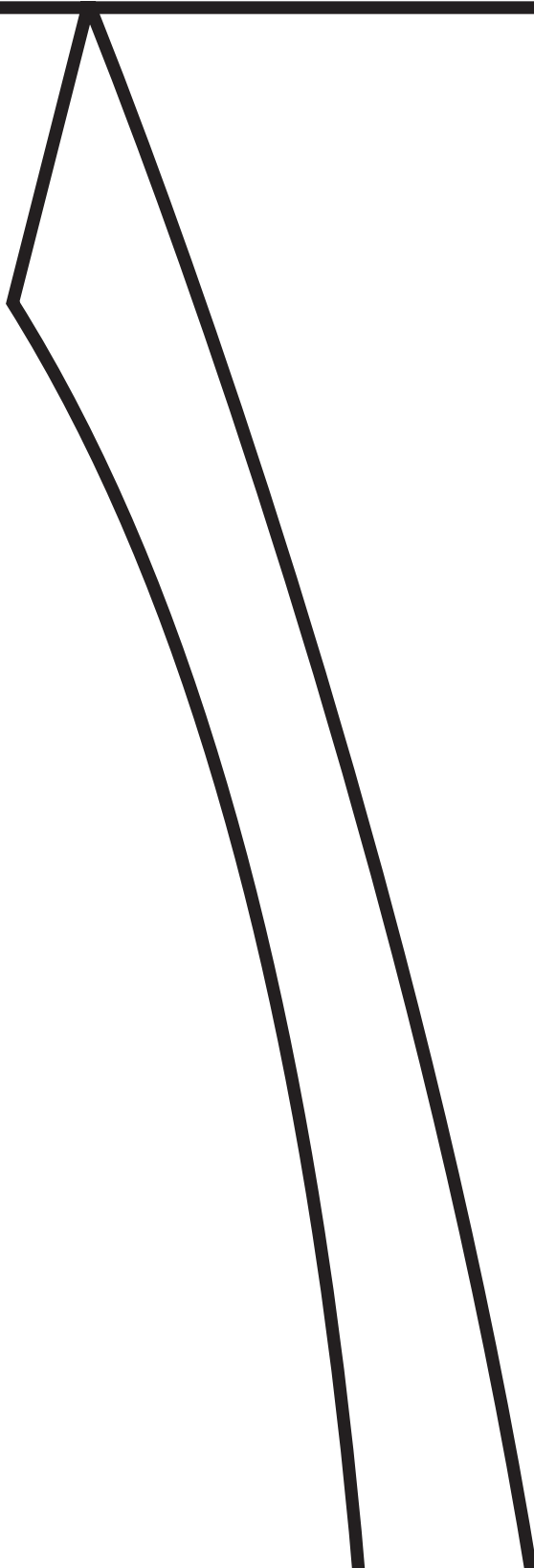
5



6



7



8



9



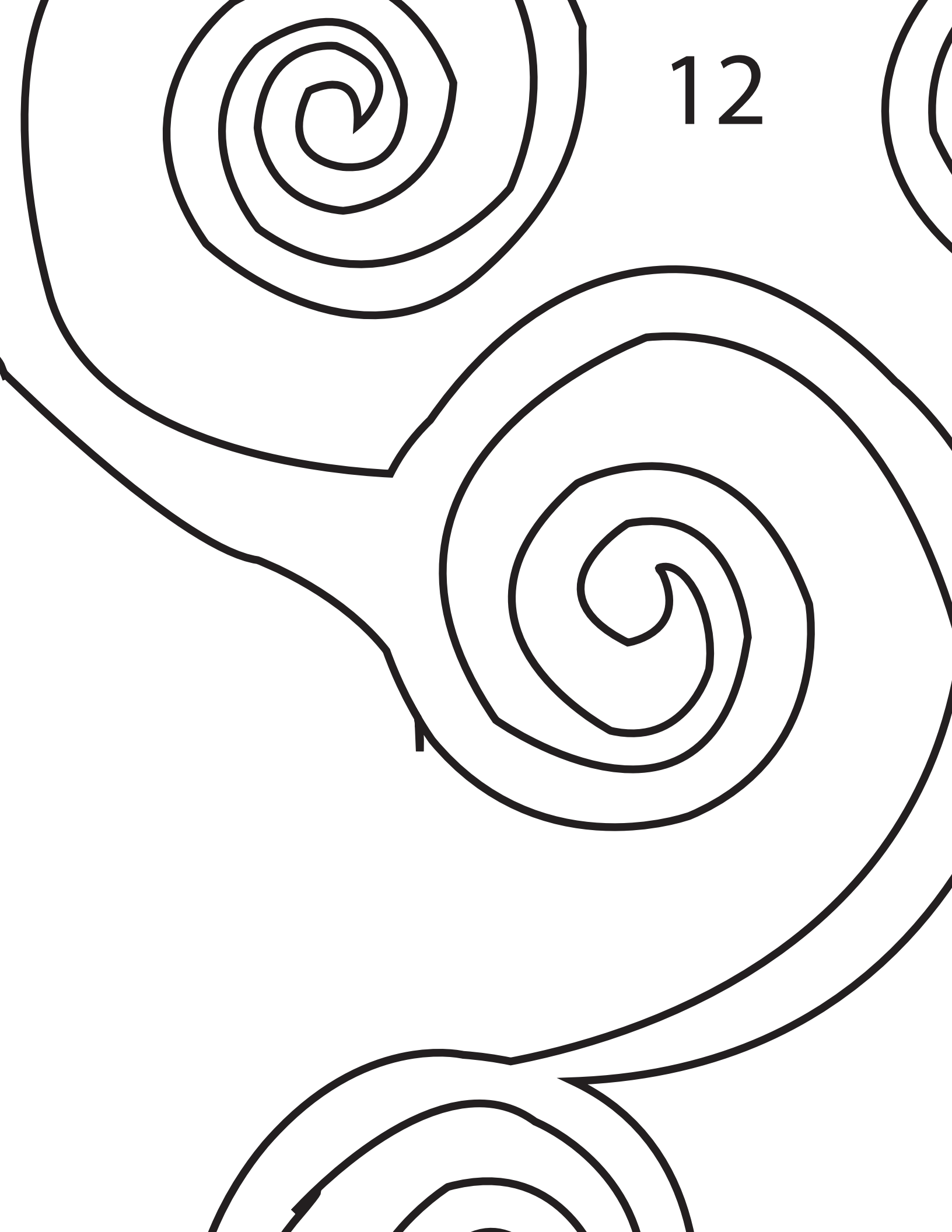
10

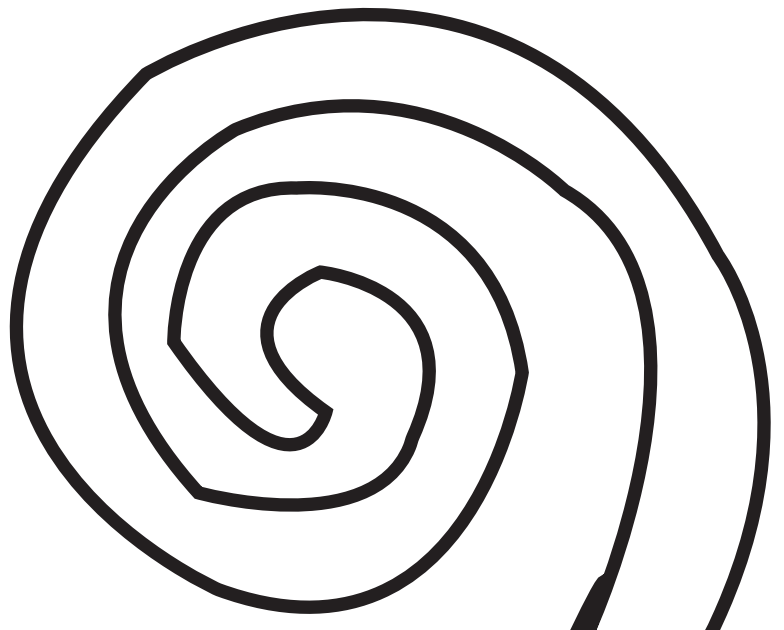


2

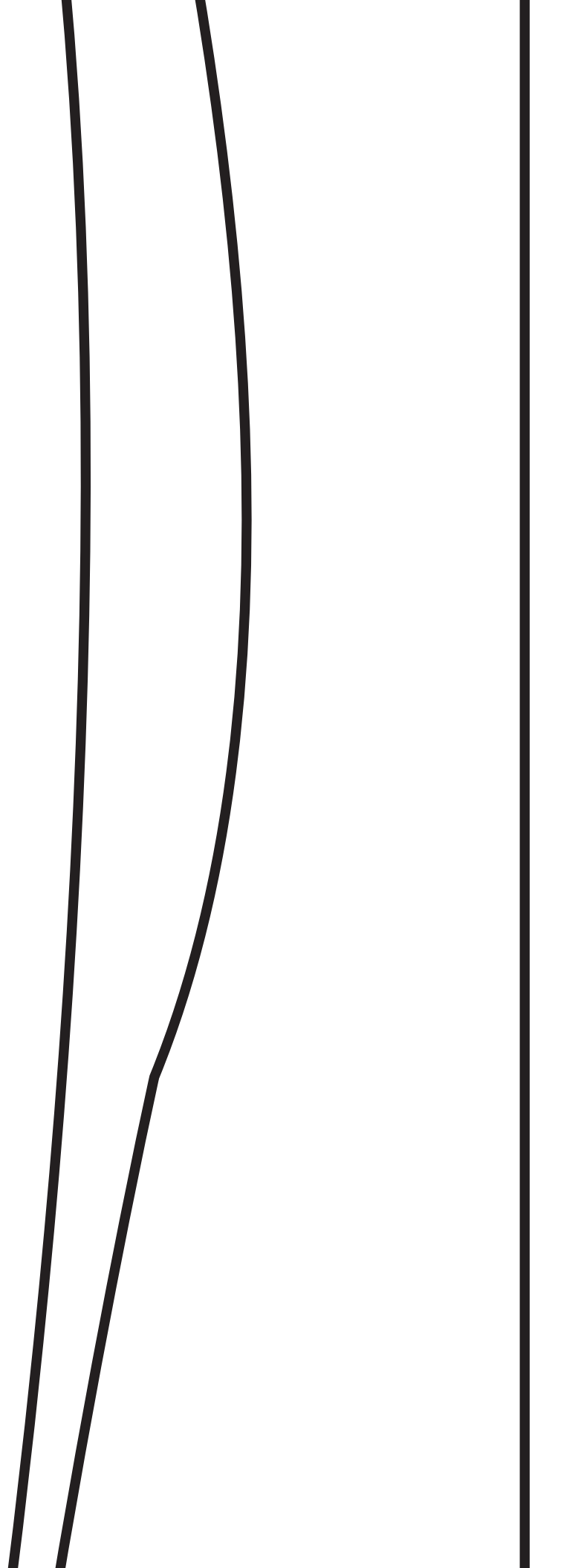
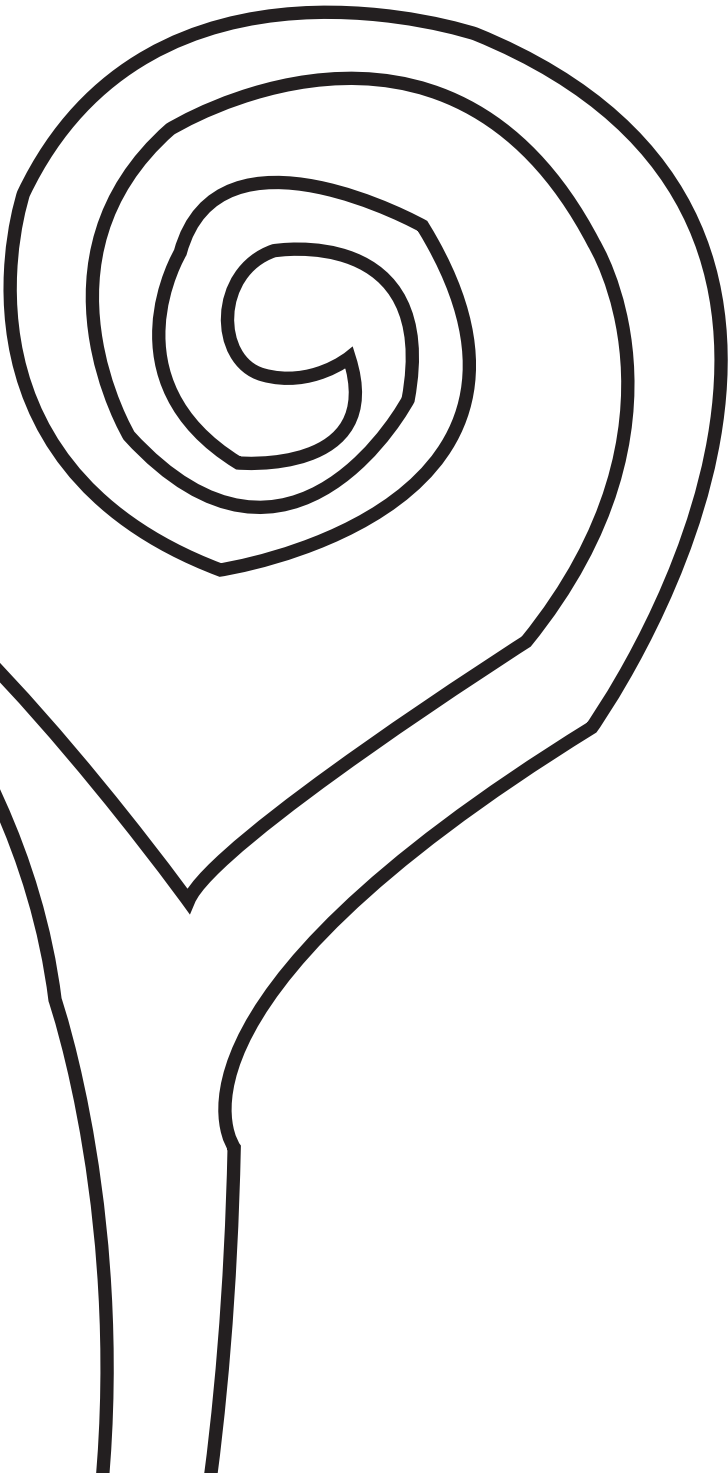




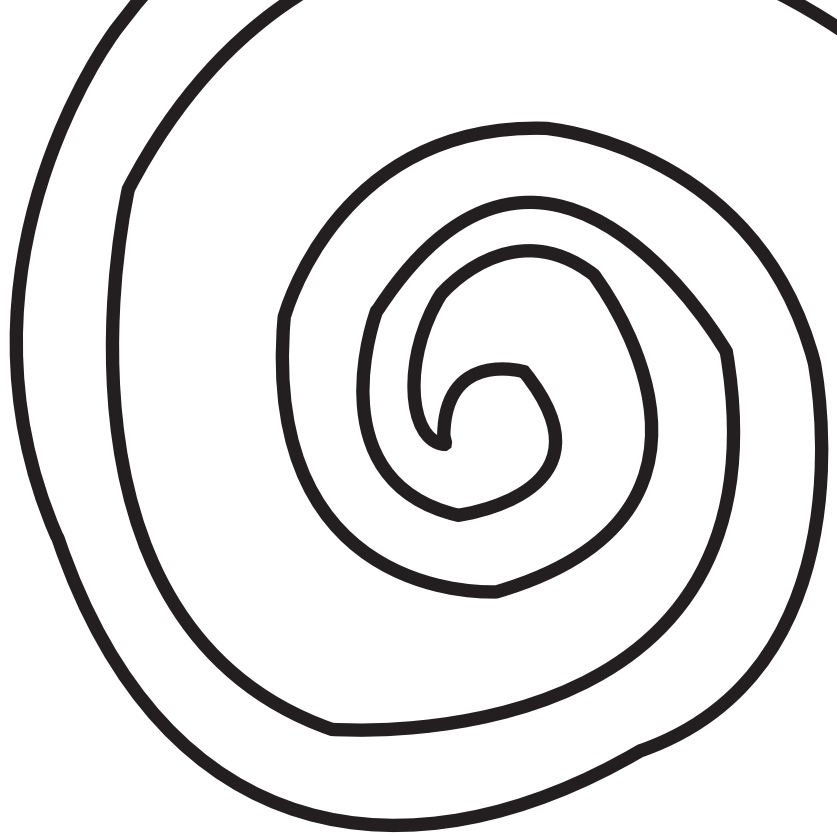


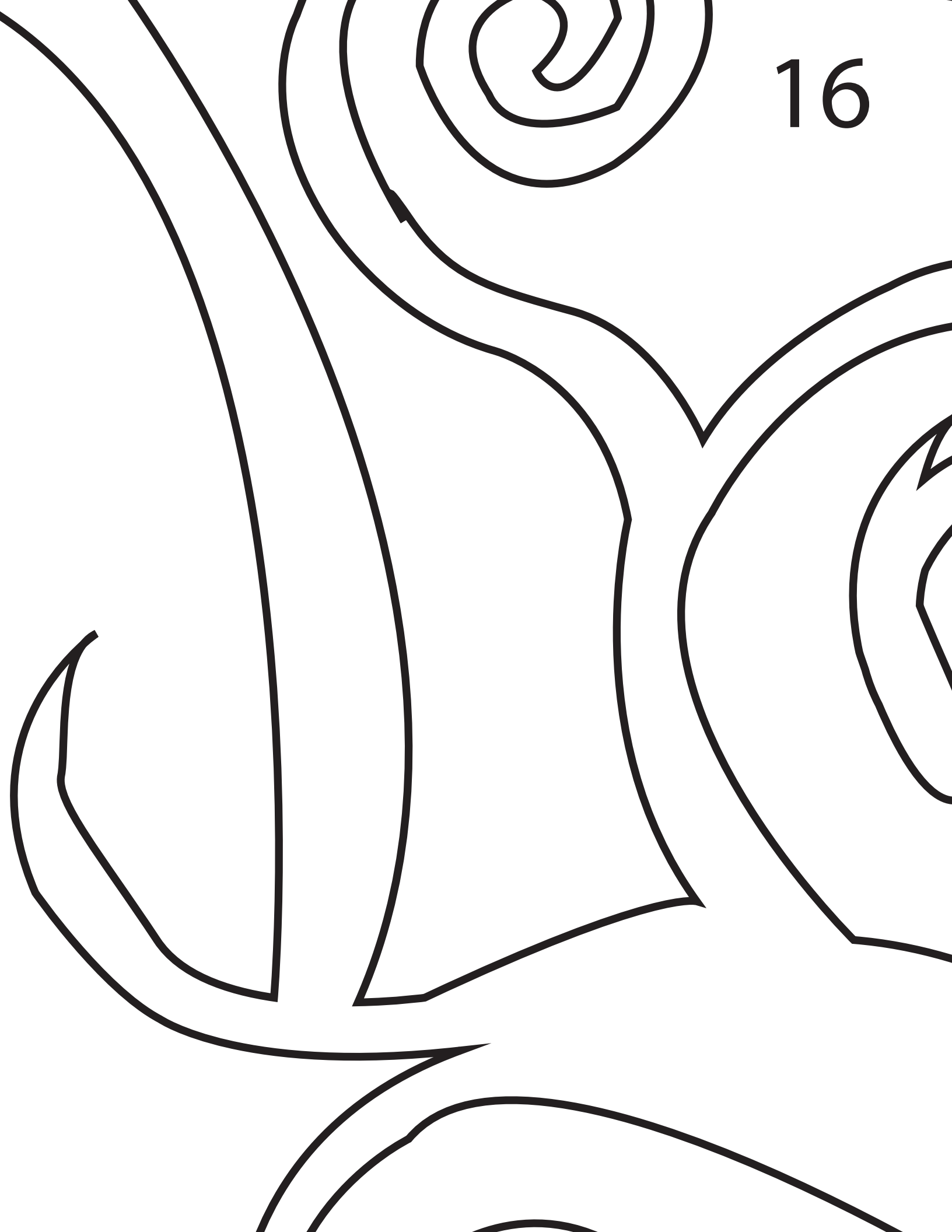


14



15





17







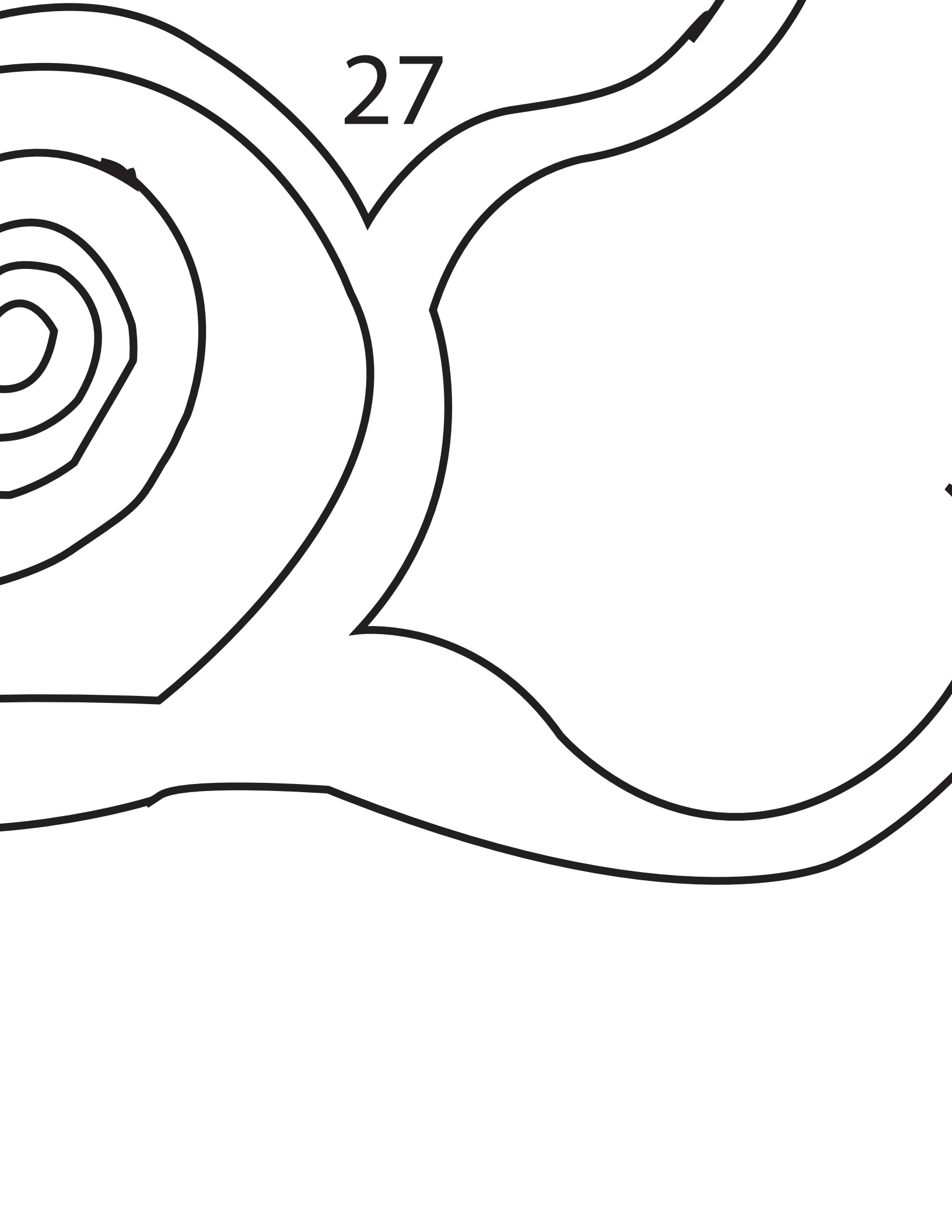
20



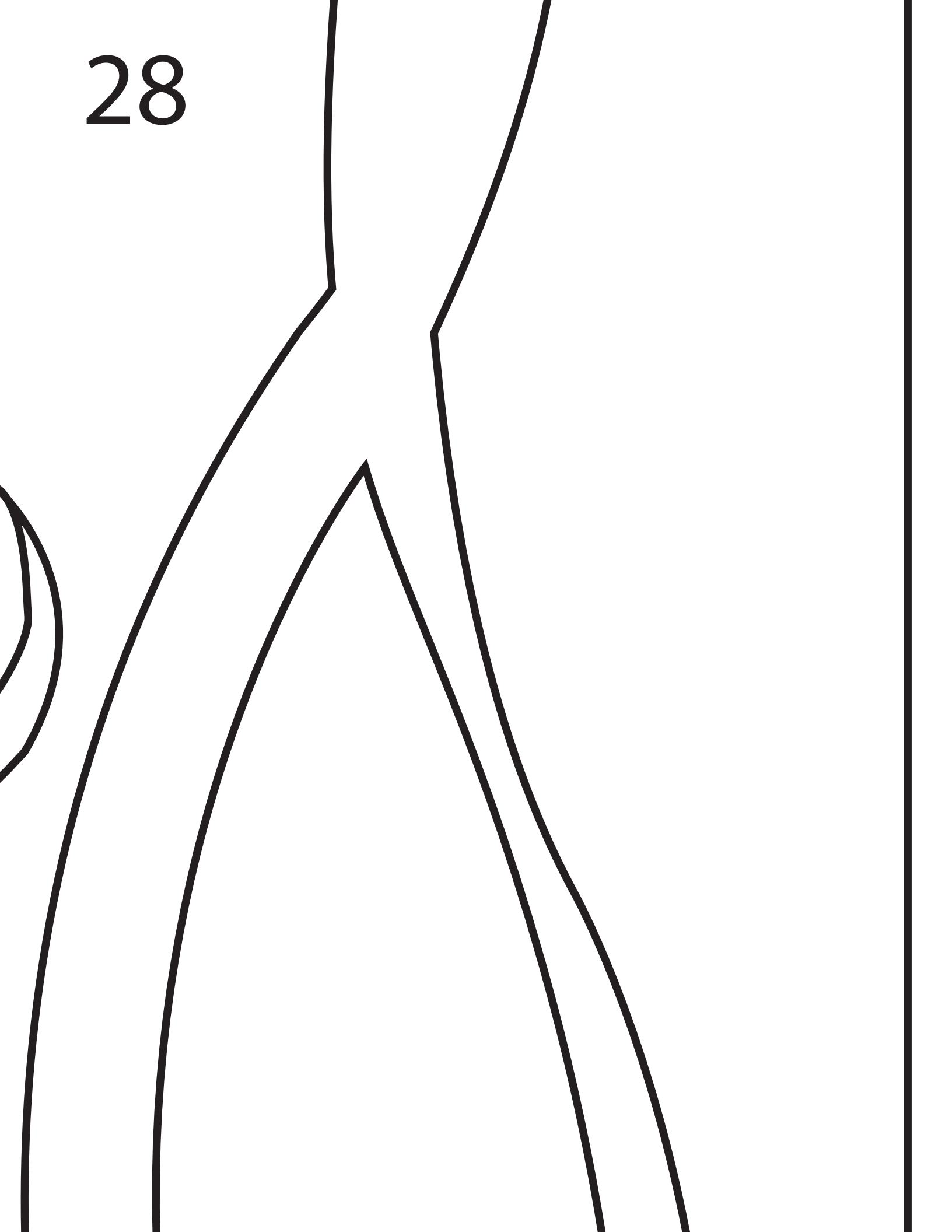
26



27



28



29



30



31



32

33



34



35