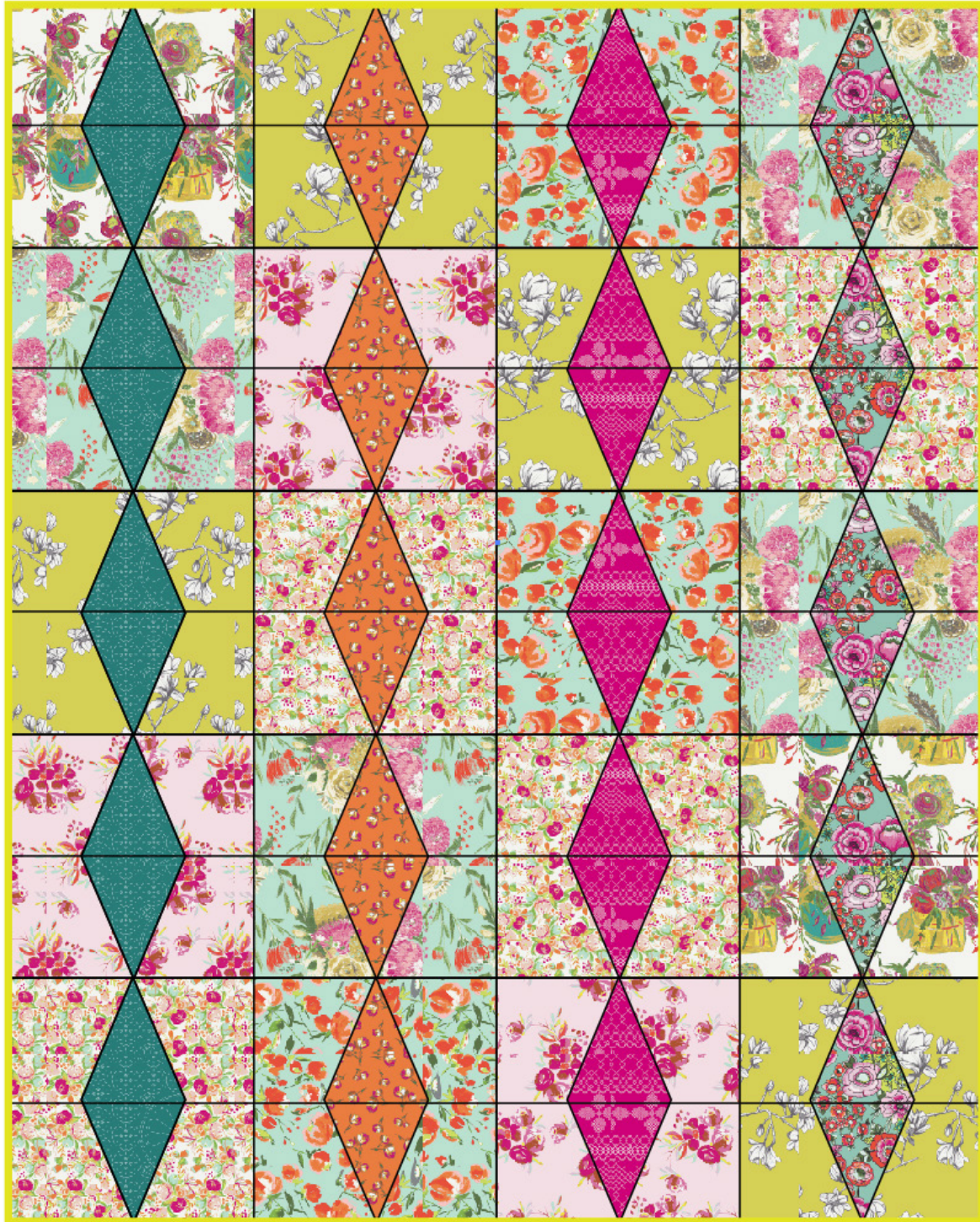


splendorous



splendorous

bari j.

QUILT DESIGNED BY BLAIR STOCKER

PATTERN INSTRUCTIONS BY BLAIR STOCKER

WILD bloom

FABRICS DESIGNED BY BARI J.



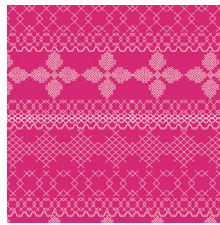
COLOR OPTION

COME SHINE



WBL-12030

FLOWER SHOWER INTENSE



WBL-12031

CROSS & STITCH RASPBERRY



WBL-12032

SUMMER BOUQUET CLEAR



WBL-12033

LIVELY ROSEBUDS BURST



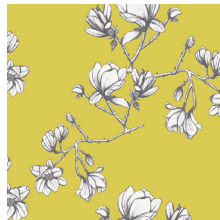
WBL-12034

CORSAGE CHARM PINK



WBL-12035

LOWERFIELD SUNRISE



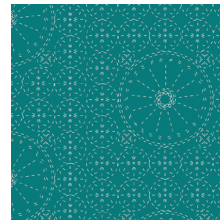
WBL-12036

MAGNOLIA STUDY ZEST



SGE-14457

EVERLASTING BLOOMS
CITRUS



SGE-14458

SASHIKO FLORETTE TEA



SGE-14459

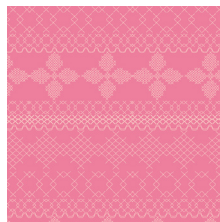
STILL LIFE CRISP

COME RAIN



WBL-22030

FLOWER SHOWER SUBTLE



WBL-22031

CROSS & STITCH CANDY



WBL-22032

SUMMER BOUQUET POND



WBL-22033

LIVELY ROSEBUDS
CRYSTAL



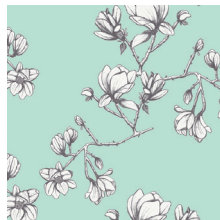
WBL-22034

CORSAGE CHARM AQUA



WBL-22035

FLOWERFIELD SUNSET



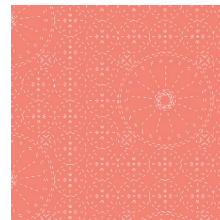
WBL-22036

MAGNOLIA STUDY FRESH



WBL-22037

EVERLASTING BLOOMS
BERRY



WBL-22038

SASHIKO FLORETTE CORAL



WBL-22039

STILL LIFE SWEET



FEEL THE DIFFERENCE © 2017 Courtesy of Art Gallery Quilts LLC. All Rights Reserved.

splendorous

FINISHED SIZE | 44" x 55"

FABRIC REQUIREMENTS

Fabric A	WBL-12038	¼ yd.
Fabric B	WBL-12033	¼ yd.
Fabric C	WBL-12031	¼ yd.
Fabric D	WBL-12030	¼ yd.
Fabric E	WBL-12039	¼ yd.
Fabric F	WBL-12032	¾ yd.
Fabric G	WBL-12036	¾ yd.
Fabric H	WBL-12034	¾ yd.
Fabric I	WBL-12035	¾ yd.
Fabric J	WBL-12037	¾ yd.
Fabric K	PE-407	¼ yd.

BACKING FABRIC

WBL-12031 4 yds. (*Suggested*)

BINDING FABRIC

PE-407 (Fabric **K**) (*included*)

COLOR OPTION

Fabric A	WBL-22038	¼ yd.
Fabric B	WBL-22033	¼ yd.
Fabric C	WBL-22031	¼ yd.
Fabric D	WBL-22030	¼ yd.
Fabric E	WBL-22039	¼ yd.
Fabric F	WBL-22032	⅓ yd.
Fabric G	WBL-22036	⅓ yd.
Fabric H	WBL-22034	⅓ yd.
Fabric I	WBL-22035	⅓ yd.
Fabric J	WBL-22037	⅓ yd.
Fabric K	PE-404	¼ yd.

BACKING FABRIC

WBL-22033 4 yds. (*Suggested*)

BINDING FABRIC

PE-404 (Fabric **K**) (*included*)

CUTTING DIRECTIONS

¼" seam allowances are included.
WOF means width of fabric.

- Ten (10) template **a** from fabrics **A**, **B**, **C** and **D**.
- Four (4) template **b** from fabric **E**.
- Four (4) template **c** from fabric **E**.
- Eight (8) template **b** from fabrics **F**, **G** and **I**.
- Eight (8) template **c** from fabrics **F**, **G** and **I**.
- Six (6) template **b** from fabrics **H** and **J**.
- Six (6) template **c** from fabrics **H** and **J**.

CONSTRUCTION

Sew all rights sides together with ¼" seam allowance.

Row 1

- Take two (2) template **a** from fabrics **A**, **B**, **C** and **D**.
- Take two (2) template **b** from fabrics **E**, **G**, **J** and **F**.
- Take two (2) template **c** from fabrics **E**, **G**, **J** and **F**.
- Join the templates in the following order **b > a > c**.
- Join the resulting blocks.



DIAGRAM 1

- Join the pairing blocks and sew them following Diagram 2 to create Row 1:

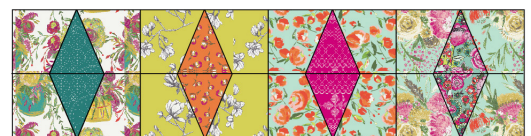


DIAGRAM 2

Row 2

- Take two (2) template **a** from fabrics **A, B, C** and **D**.
- Take two (2) template **b** from fabrics **F, H, G** and **I**.
- Take two (2) template **c** from fabrics **F, H, G** and **I**.
- Join the templates in the following order **b > a > c**.
- Join the resulting blocks.



F > A > F x 2



H > B > H x 2



G > C > G x 2



I > D > I x 2

DIAGRAM 3

- Join the pairing blocks and saw them following Diagram 2 to create Row 2:



DIAGRAM 4

Row 3

- Take two (2) template **a** from fabrics **A, B, C** and **D**.
- Take two (2) template **b** from fabrics **G, I, J** and **F**.
- Take two (2) template **c** from fabrics **G, I, J** and **F**.
- Join the templates in the following order **b > a > c**.
- Join the resulting blocks.



G > A > G x 2



I > B > I x 2



J > C > J x 2



F > D > F x 2

DIAGRAM 5

- Join the pairing blocks and saw them following Diagram 2 to create Row 3:



DIAGRAM 6

Row 4

- Take two (2) template **a** from fabrics **A, B, C** and **D**.
- Take two (2) template **b** from fabrics **H, F, I** and **E**.
- Take two (2) template **c** from fabrics **H, F, I** and **E**.
- Join the templates in the following order **b > a > c**.
- Join the resulting blocks.



H > A > H x 2



F > B > F x 2



I > C > I x 2



E > D > E x 2

DIAGRAM 7

- Join the pairing blocks and saw them following Diagram 2 to create Row 4:



DIAGRAM 8

Row 5

- Take two (2) template **a** from fabrics **A, B, C** and **D**.
- Take two (2) template **b** from fabrics **I, J, H** and **G**.
- Take two (2) template **c** from fabrics **I, J, H** and **G**.
- Join the templates in the following order **b > a > c**.
- Join the resulting blocks.



I > A > I x 2



J > B > J x 2



H > C > H x 2



G > D > G x 2

DIAGRAM 9

- Join the pairing blocks and sew them following Diagram 2 to create Row 5:



DIAGRAM 10

- Join the rows:
- Row 1 > Row 2 > Row 3 > Row 4 > Row 5.

QUILT ASSEMBLY

Sew rights sides together.

- Place BACKING FABRIC on a large surface wrong side up. Stretch it with masking tape against that surface.
- Place BATTING on top of backing fabric.
- Place TOP on top of the batting with right side facing up. Smooth away wrinkles using your hands.
- Pin all layers together and baste with basting thread, using long stitches. You can also use safety pins to join the layers.
- Machine or hand quilt starting at the center and working towards the corners. Remember that quilting motifs are a matter of personal preference. Have fun choosing yours!
- After you finished, trim excess of any fabric or batting, squaring the quilt to proceed to bind it.

BINDING

Sew rights sides together.

- Cut enough strips $1\frac{1}{2}$ ' wide by the width of the fabric **K** to make a final strip 190' long. Start sewing the binding strip in the middle of one of the sides of the quilt, placing the strip right side down and leaving an approximated 5' tail. Sew with $\frac{1}{4}$ ' seam allowance (using straight stitch), aligning the strip's raw edge with the quilt top's raw edge.
- Stop stitching $\frac{1}{4}$ ' before the edge of the quilt (**DIAGRAM B 1**). Clip the threads. Remove the quilt from under the machine presser foot. Fold the strip in a motion of 45° and upward, pressing with your fingers (**DIAGRAM B2**). Hold this fold with your finger, bring the strip down in line with the next edge, making a horizontal fold that aligns with the top edge of the quilt (**DIAGRAM B3**). Start sewing at $\frac{1}{4}$ ' of the border, stitching all the layers. Do the same in the four corners of the quilt.
- Stop stitching before you reach the last 5 or 6 inches. Cut the threads and remove the quilt from under the machine presser foot. Lay the loose ends of the binding flat along the quilt edge, folding the ends back on themselves where they meet. Press them together to form a crease. Using this crease as the stitching line, sew the two open ends of the binding with right sides together (you can help yourself marking with a pencil if the crease is difficult to see).
- Trim seam to $\frac{1}{4}$ ' and press open. Complete the sewing. Turn binding to back of the quilt, turn raw edge inside and stitch by hand using blind stitch.

DIAGRAM B1

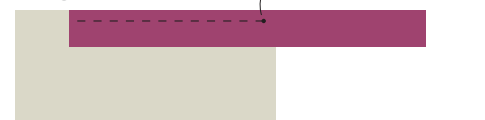


DIAGRAM B2



DIAGRAM B3



XXXXXXXXXXXXXXXXXXXXXXXXXXXXXXXXXXXX

*Congratulations
& enjoy*

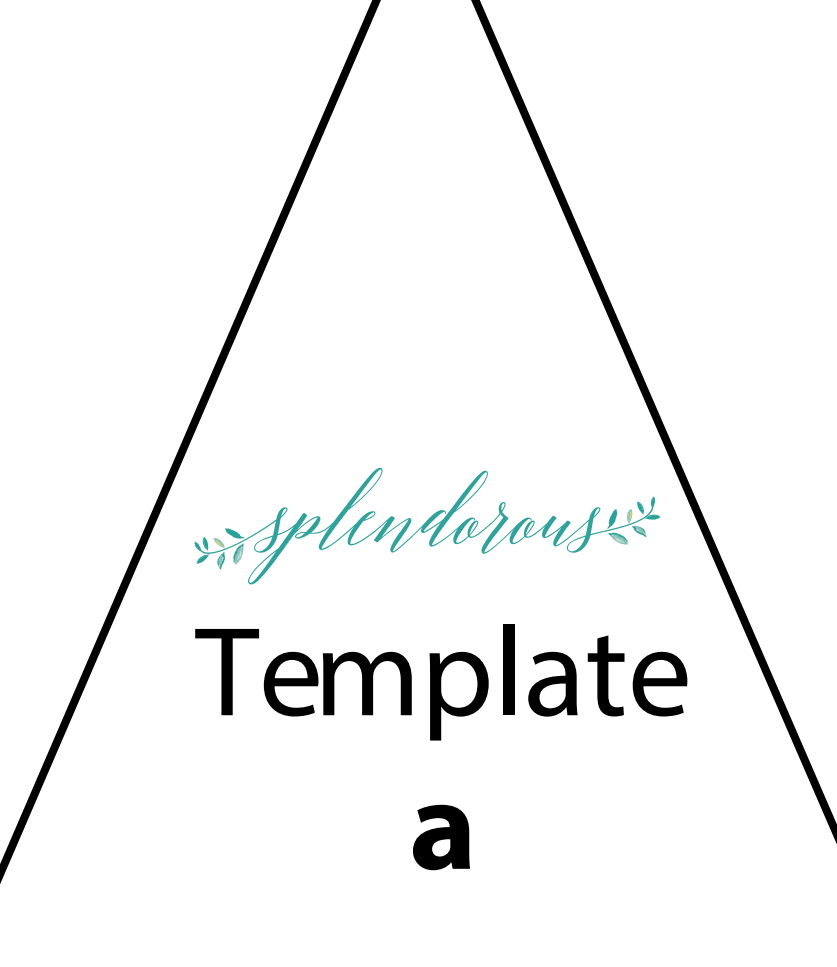
XXXXXXXXXXXXXXXXXXXXXXXXXXXXXXXXXXXX



artgalleryfabrics.com

NOTE: While all possible care has been taken to ensure the accuracy of this pattern, We are not responsible for printing errors or the way in which individual work varies. Please read instructions carefully before starting the construction of this quilt. If desired, wash and iron your fabrics before starting to cut.

© 2017 Courtesy of Art Gallery Quilts LLC. All Rights Reserved.



splendorous
Template
a

splendorous

Template **b**



Template

C

artgalleryfabrics.com