

XXXXXX



✕ ✕ ✕ ✕ ✕ ✕ ✕ ✕ ✕ ✕ ✕ ✕ ✕ ✕ ✕ ✕ ✕ ✕ ✕



Harper Dreams

DESIGNED BY AGF STUDIO



COLOR OPTION

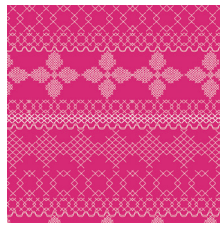
WILD bloom

FABRICS DESIGNED BY BARI J.

COME SHINE



WBL-12030
FLOWER SHOWER INTENSE



WBL-12031
CROSS & STITCH RASPBERRY



WBL-12032
SUMMER BOUQUET CLEAR



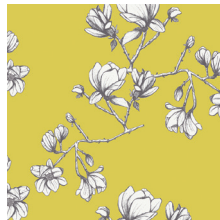
WBL-12033
LIVELY ROSEBUDS BURST



WBL-12034
CORSAGE CHARM PINK



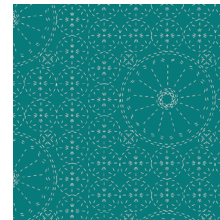
WBL-12035
LOWERFIELD SUNRISE



WBL-12036
MAGNOLIA STUDY ZEST



SGE-14457
EVERLASTING BLOOMS
CITRUS



SGE-14458
SASHIKO FLORETTE TEA

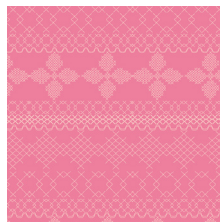


SGE-14459
STILL LIFE CRISP

COME RAIN



WBL-22030
FLOWER SHOWER SUBTLE



WBL-22031
CROSS & STITCH CANDY



WBL-22032
SUMMER BOUQUET POND



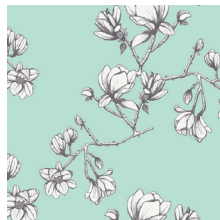
WBL-22033
LIVELY ROSEBUDS
CRYSTAL



WBL-22034
CORSAGE CHARM AQUA



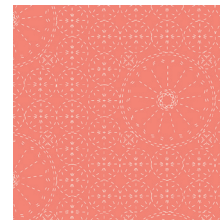
WBL-22035
FLOWERFIELD SUNSET



WBL-22036
MAGNOLIA STUDY FRESH



WBL-22037
EVERLASTING BLOOMS
BERRY



WBL-22038
SASHIKO FLORETTE CORAL



WBL-22039
STILL LIFE SWEET



FEEL THE DIFFERENCE © 2017 Courtesy of Art Gallery Quilts LLC. All Rights Reserved.



FINISHED SIZE | 13" x 30"

FABRIC REQUIREMENTS

Fabric A	DEN-S-2002	FQ
Fabric B	PE-451	FQ
Fabric C	PE-404	5/8"yd
Fabric D	WBL-12030	FQ.
Fabric E	PE- 408	FQ

BACKING FABRIC

PE-404. (Fabric **C**)(Suggested)

BINDING FABRIC

PE-404 (Fabric **C**)

CUTTING DIRECTIONS

*1/4" seam allowances are included.
WOF means width of fabric.*

- One (1) 13 1/2" x 10 1/2" rectangle from fabric **A**.
- Three (3) template **1** from fabric **A**.
- One (1) FQ (11x 22" in) yd from fabric **B**
- Six (6) template **2** from fabric **B**
- Six (6) template **1** from fabric **D**
- Twelve (12) template **2** from fabric **D**
- One (1) 13 1/2" x 10 1/2" rectangle from fabric **E**
- Three (3) template **1** from fabric **E**
- Two (2) 13 1/2" x 21" rectangles from fabric **C**

CONSTRUCTION

Sew all rights sides together with 1/4" seam allowance.

- Place template **2** shapes over fabric **A,B** and **E** rectangles, put pins to hold them in place.
- Top stitch with 1/4" seam allowance.
- Refer to diagram below.

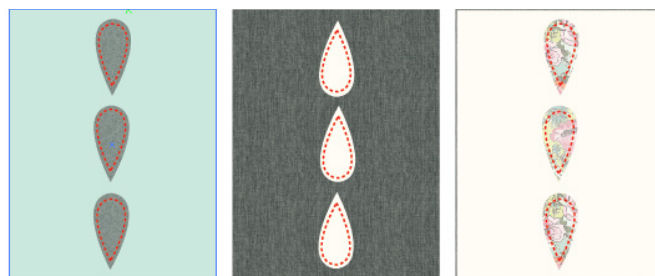


DIAGRAM 1

- Once sewn unravel fabric at the seam allowance to create a subtle texture.
- You can use a pin to help yourself. Be careful with unraveling fabric more than needed!
- Now join fabric **A,B** and **E** rectangles
- Use steam a seam fabric glue or any lightweight fusible interfacing to give stability to template **2** shapes.
- Press all template **2** pieces.
- Place template **2** pieces over the pillow top.
- Refer to diagram below.



DIAGRAM 2

- Once pieces are properly placed over the pillow top pin to hold them and top stitch with 1/4" seam allowance. (If you use steam-a-seam fabric glue, your pieces already should be stable over the fabric, this can make the process even easier!)

QUILT ASSEMBLY

Sew rights sides together.

- Place BACKING FABRIC on a large surface wrong side up. Stretch it with masking tape against that surface.
- Place BATTING on top of backing fabric.
- Place TOP on top of the batting with right side facing up. Smooth away wrinkles using your hands.
- Pin all layers together and baste with basting thread, using long stitches. You can also use safety pins to join the layers.
- Machine quilt using the template provided below. Use a fabric marker to mark the template over the pillow top. However, remember that quilting motifs are a matter of personal preference!
- If you use the template provided in the tutorial, refer to the diagram below for quilt placement.

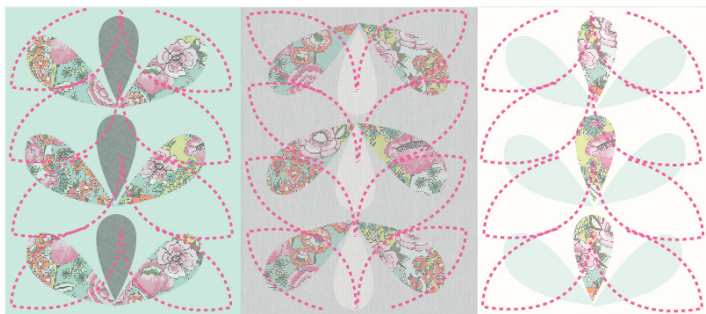


DIAGRAM 3

- Trim excess of any fabric or batting,

ASSEMBLY

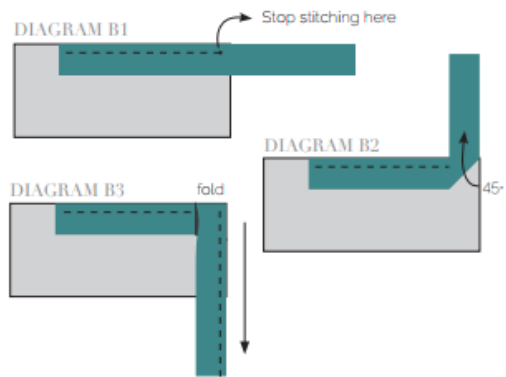
Sew rights sides together.

- These pillow has an envelope style back. Lay your pillow top right side facing up and layer the back pieces on top, right sides facing down. Make sure the hemmed edges are overlapping each other and match the top and back edges of fabric C together.
- Pin and sew together at 1/4" seam allowance.
- Flip right side out, making sure the corners are turned out nicely and stuff with your 13"x30" pillow.
- Congrats! Time to snuggle up with your new blooming pillow!

BINDING

Sew rights sides together.

- Cut enough strips 1 1/2" wide by the width of the fabric C to make a final strip 96" long. Start sewing the binding strip in the middle of one of the sides of the placemats, placing the strip right side down and leaving an approximated 5" tail. Sew with 1/4" seam allowance (using straight stitch), aligning the strip's raw edge with the quilt top's raw edge.
- Stop stitching 1/4" before the edge of the quilt (DIAGRAM B1). Clip the threads. Remove the quilt from under the machine presser foot. Fold the strip in a motion of 45° and upward, pressing with your fingers
- (DIAGRAM B2). Hold this fold with your finger, bring the strip down in line with the next edge, making a horizontal fold that aligns with the top edge of the quilt (DIAGRAM B3). Start sewing at 1/4" of the border, stitching all the layers. Do the same in the four corners of the placemats.
- Stop stitching before you reach the last 5 or 6 inches. Cut the threads and remove the quilt from under the machine presser foot. Lay the loose ends of the binding flat along the quilt edge, folding the ends back on themselves where they meet. Press them together to form a crease. Using this crease as the stitching line, sew the two open ends of the binding with right sides together (you can help yourself marking with a pencil if the crease is difficult to see).
- Trim seam to 1/4" and press open. Complete the sewing. Turn binding to back of the quilt, turn raw edge inside and stitch by hand using blind stitch.



artgalleryfabrics.com

NOTE: While all possible care has been taken to ensure the accuracy of this pattern, We are not responsible for printing errors or the way in which individual work varies. Please read instructions carefully before starting the construction of this quilt. If desired, wash and iron your fabrics before starting to cut.

