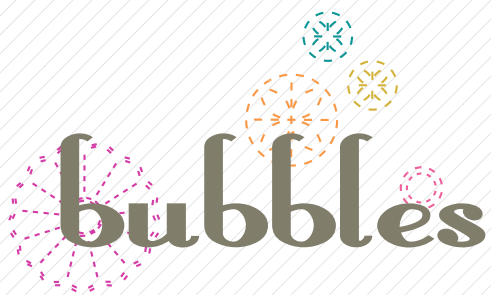


X
X
X
X
X
X
X
X
X
X
X
X
X

This is a vibrant, abstract textile piece, possibly a rug or a large tapestry. It features a complex, organic pattern of interlocking, swirling loops and lines. The colors used for these loops are bright and varied, including shades of pink, orange, yellow, green, and blue, which stand out sharply against a dark, textured background. The edges of the piece are finished with a thick, pink fringe, giving it a soft, tactile appearance. The overall composition is dense and dynamic, with the loops creating a sense of movement and depth.

× × × × × × × × × × × × × × × × × × ×



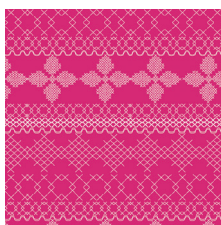


FABRICS DESIGNED BY BARI J.

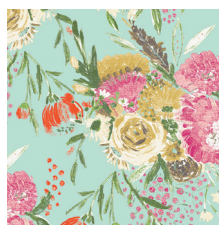
COME SHINE



WBL-12030
FLOWER SHOWER INTENSE



WBL-12031
CROSS & STITCH RASPBERRY



WBL-12032
SUMMER BOUQUET CLEAR



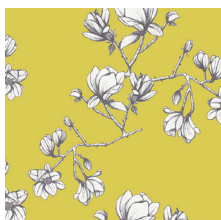
WBL-12033
LIVELY ROSEBUDS BURST



WBL-12034
CORSAGE CHARM PINK



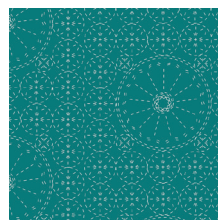
WBL-12035
LOWERFIELD SUNRISE



WBL-12036
MAGNOLIA STUDY ZEST



SGE-14457
EVERLASTING BLOOMS
CITRUS



SGE-14458
SASHIKO FLORETTE TEA

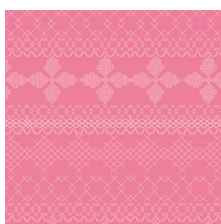


SGE-14459
STILL LIFE CRISP

COME RAIN



WBL-22030
FLOWER SHOWER SUBTLE



WBL-22031
CROSS & STITCH CANDY



WBL-22032
SUMMER BOUQUET POND



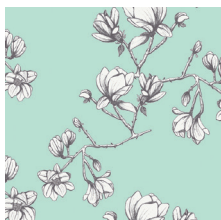
WBL-22033
LIVELY ROSEBUDS
CRYSTAL



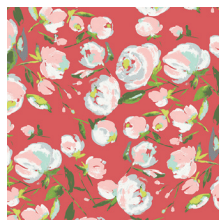
WBL-22034
CORSAGE CHARM AQUA



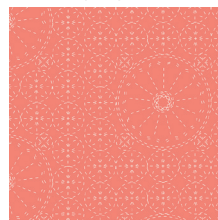
WBL-22035
FLOWERFIELD SUNSET



WBL-22036
MAGNOLIA STUDY FRESH



WBL-22037
EVERLASTING BLOOMS
BERRY



WBL-22038
SASHIKO FLORETTE CORAL



WBL-22039
STILL LIFE SWEET



FEEL THE DIFFERENCE © 2017 Courtesy of Art Gallery Quilts LLC. All Rights Reserved.



The diagram illustrates the layers of a quilt. It consists of three main layers shown as overlapping rectangles. The top layer is a dark grey rectangle labeled "Fabric G (backing)". Below it is a white rectangle labeled "Batting". The bottom layer is a dark grey rectangle labeled "Fabric G". In the center of the "Fabric G" layer is a colorful rectangular block labeled "Fabrics A, B, C, D, E, and F Block". This block contains six vertical strips of different patterns and colors: a light blue strip with orange and red floral patterns, a solid magenta strip, an orange strip with a small white pattern, a green strip with pink and red floral patterns, a yellow strip with white floral patterns, and a solid teal strip.

artgalleryfabrics.com



DIAGRAM 2

- Trim your piece to 33" x 22".
- Do a zigzag stitch around the edge.
- Saw the chenille bias around the edge of the rug on the top and the back.
- Wash it to see the chenille bloom.



DIAGRAM 3

- Visit the following link for an instructional Chenille video.

https://www.youtube.com/watch?v=bGUgeols_IQ

XXXXXXXXXXXXXXXXXXXXXXXXXXXXXXXXXXXX



artgalleryfabrics.com

NOTE: While all possible care has been taken to ensure the accuracy of this pattern, We are not responsible for printing errors or the way in which individual work varies. Please read instructions carefully before starting the construction of this quilt. If desired, wash and iron your fabrics before starting to cut.

© 2017 Courtesy of Art Gallery Quilts LLC. All Rights Reserved.