

X
X
X
X
X
X
X
X
X
X
X
X

Aristada



XXXXXXXXXXXXXXXXXXXXXXXXXXXX



Aristada

QUILT DESIGNED BY AGF STUDIO

WILD bloom

FABRICS DESIGNED BY BARI J.

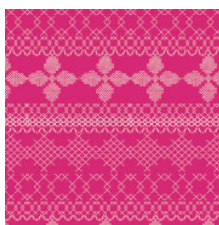


COME SHINE



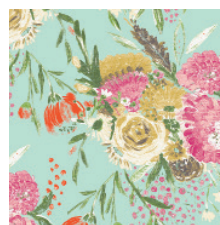
WBI-12030

FLOWER SHOWER INTENSE



WBI-12031

CROSS & STITCH RASPBERRY



WBI-12032

SUMMER BOUQUET CLEAR



WBI-12033

LIVELY ROSEBUDS BURST



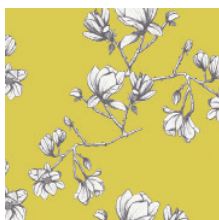
WBI-12034

CORSAGE CHARM PINK



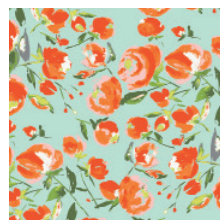
WBI-12035

LOWERFIELD SUNRISE



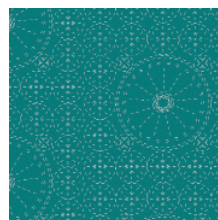
WBI-12036

MAGNOLIA STUDY ZEST



SOE-14457

EVERLASTING BLOOMS
CITRUS



SOE-14458

SASHIKO FLORETTE TEA



SOE-14459

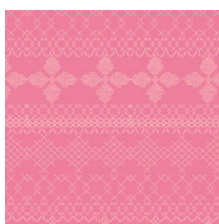
STILL LIFE CRISP

COME RAIN



WBI-22030

FLOWER SHOWER SUBTLE



WBI-22031

CROSS & STITCH CANDY



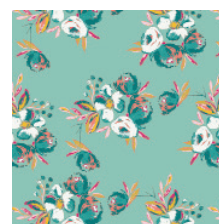
WBI-22032

SUMMER BOUQUET POND



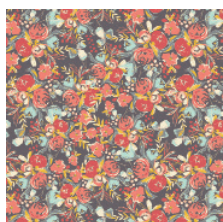
WBI-22033

LIVELY ROSEBUDS
CRYSTAL



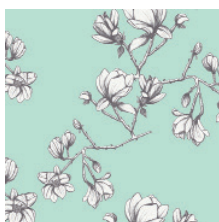
WBI-22034

CORSAGE CHARM AQUA



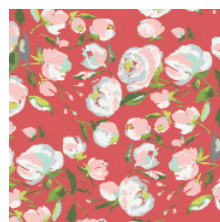
WBI-22035

FLOWERFIELD SUNSET



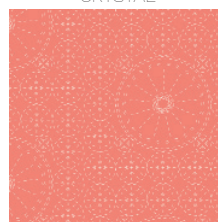
WBI-22036

MAGNOLIA STUDY FRESH



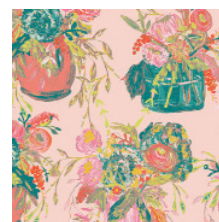
WBI-22037

EVERLASTING BLOOMS
BERRY



WBI-22038

SASHIKO FLORETTE CORAL



WBI-22039

STILL LIFE SWEET



FEEL THE DIFFERENCE ©2017 Courtesy of Art Gallery Quilts LLC. All Rights Reserved.

Aristada

FINISHED SIZE | 56" X 56"

FABRIC REQUIREMENTS

Fabric A	WBL-12030	¾ yd.
Fabric B	WBL-12032	¾ yd.
Fabric C	WBL-12037	¼ yd.
Fabric D	WBL-12031	¼ yd.
Fabric E	WBL-22031	½ yd.
Fabric F	WBL-22032	½ yd.
Fabric G	WBL-22038	¼ yd.
Fabric H	WBL-22039	½ yd.
Fabric I	DEN-S-2000	¾ yd.
Fabric J	WBL-12037	1 ¾ yd.

BACKING FABRIC

WBL-22032 3 ¾ yds. *(Suggested)*

BINDING FABRIC

WBL-12032 (Fabric **B**) *(included)*

CUTTING DIRECTIONS

*¼" seam allowances are included.
WOF means width of fabric.*

- Fabric **A**: Fourteen (14) 8 ½" squares
- Fabric **B**: Ten (10) 8 ½" squares
- Fabric **C**: Four (4) 8 ½" squares
- Fabric **D**: Five (5) 8 ½" squares
- Fabric **E**: Six (6) 8 ½" squares
- Fabric **F**: Eight (8) 8 ½" squares
- Fabric **G**: Five (5) 8 ½" squares
- Fabric **H**: Eight (8) 8 ½" squares
- Fabric **I**: One (1) 57" square

CONSTRUCTION

Sew all rights sides together with ¼" seam allowance.

- Sew the 8 ½" blocks together into rows following diagram 1 for fabric placement, then sew the rows together to complete your Pieced Top underlayer.
- Take your 57" square from Fabric **I** to make the top layer of the quilt top. Fold in half and press. Fold in half the other direction and press again to mark quadrants.
- Tape the template pages (found at the back of the directions) together, matching lines carefully.
- Pin the template to the lower left quadrant of the Fabric **I** square, matching up edges of the template to the fabric edges and press marks. Transfer the design to the fabric using a dressmaker's chalk pencil or disappearing pen (like a frixion erasable).
- Remove paper and make little snips in the areas that you will cut away so you can easily slip your applique scissors in to trim later after it's quilted without danger of cutting through multiple layers by accident.
- Now, repeat pattern tracing for the other three quadrants, rotating the pattern piece so that the top right corner of the template is always pointing to the center of the quilt top as shown in DIAGRAM 2.
- Prepare your back by cutting the 3 ¾ yd backing piece in half and sewing together. Place BACKING FABRIC on a large surface wrong side up. Stretch it with masking tape against that surface.
- Place BATTING on top of backing fabric.
- Place Pieced Top on top of the batting with right side facing up. Smooth away wrinkles using your hands, then place the Top with design traced on top of it all and smooth.
- Safety pin all layers together or baste with basting thread, using long stitches.
- Starting at the center and working towards the corners stitch the template design, filling in any large areas of negative space with a free motion quilting of your choice or if you prefer, leaving it un-quilted. I suggest something organic feeling like little loopy leaves or something.

Quilt Top Assembly

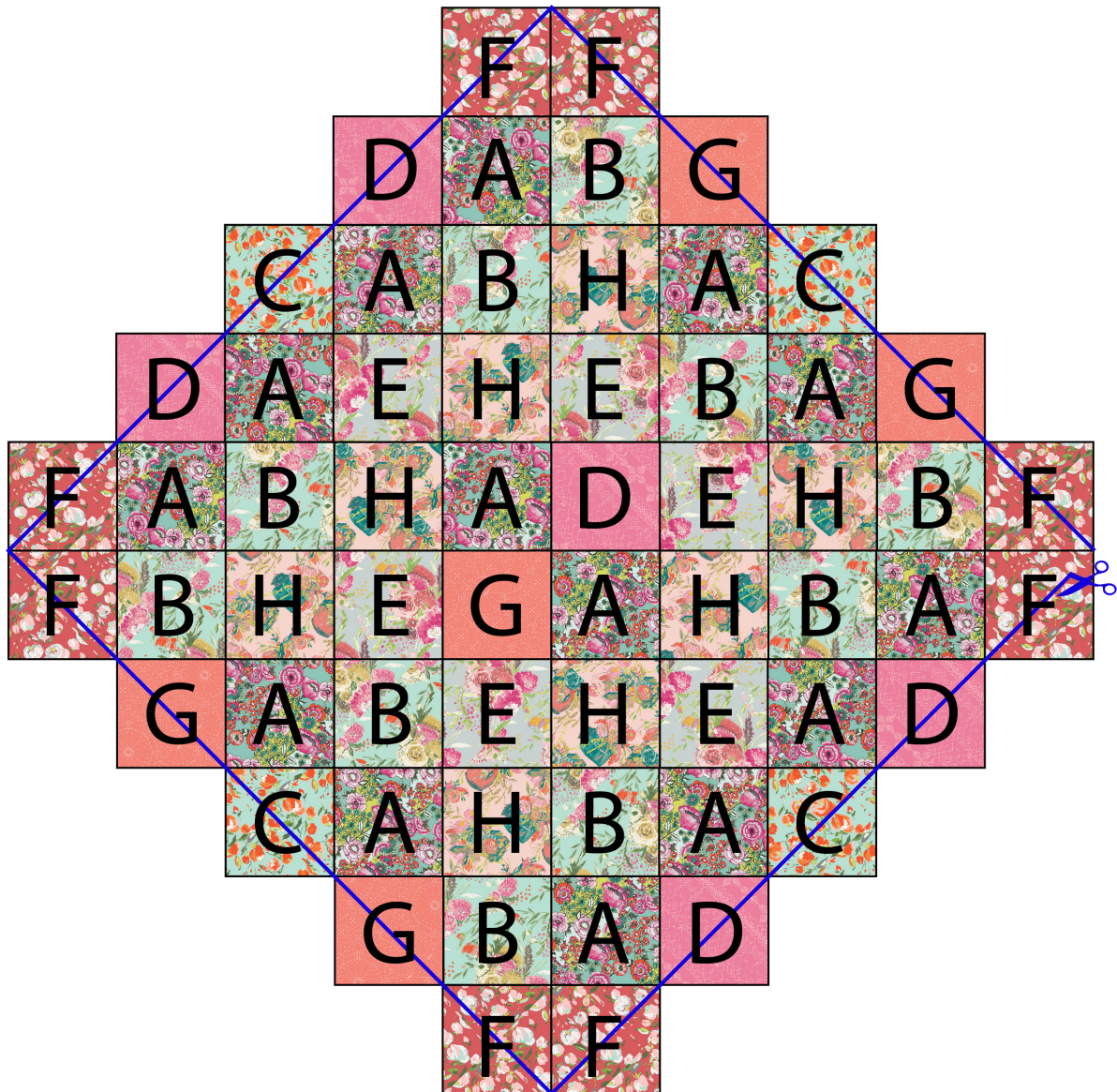
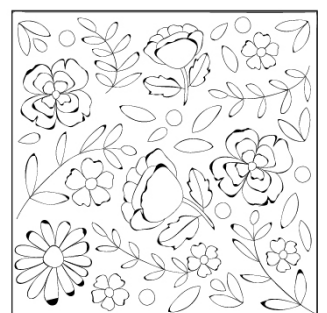


DIAGRAM 2

Reverse Applique Reveal

- Finally, reveal the magic!
- Take your small pair of applique scissors and start cutting out the insides of the flowers and leaves (which you snipped open in an earlier step), leaving about an 1/8 inch of fabric seam allowance. Be careful not to catch the fabrics underneath while trimming away the top layer.
- After you finish, trim excess fabric or batting, squaring the quilt to proceed to bind it.



BINDING

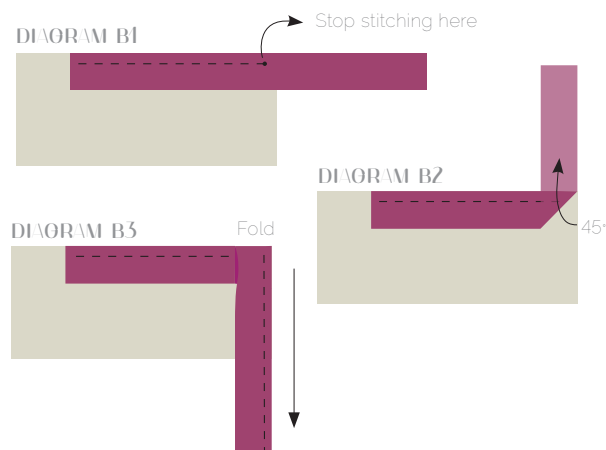
Sew rights sides together.

- Cut enough strips $1\frac{1}{2}$ ' wide by the width of the fabric **B** to make a final strip 236' long. Start sewing the binding strip in the middle of one of the sides of the quilt, placing the strip right side down and leaving an approximated 5' tail. Sew with $\frac{1}{4}$ ' seam allowance (using straight stitch), aligning the strip's raw edge with the quilt top's raw edge.

© Stop stitching $\frac{1}{4}$ ' before the edge of the quilt (**DIAORAM B 1**). Clip the threads. Remove the quilt from under the machine presser foot. Fold the strip in a motion of 45° and upward, pressing with your fingers (**DIAORAM B2**). Hold this fold with your finger, bring the strip down in line with the next edge, making a horizontal fold that aligns with the top edge of the quilt (**DIAORAM B3**). Start sewing at $\frac{1}{4}$ ' of the border, stitching all the layers. Do the same in the four corners of the quilt.

© Stop stitching before you reach the last 5 or 6 inches. Cut the threads and remove the quilt from under the machine presser foot. Lay the loose ends of the binding flat along the quilt edge, folding the ends back on themselves where they meet. Press them together to form a crease. Using this crease as the stitching line, sew the two open ends of the binding with right sides together (you can help yourself marking with a pencil if the crease is difficult to see).

© Trim seam to $\frac{1}{4}$ ' and press open. Complete the sewing. Turn binding to back of the quilt, turn raw edge inside and stitch by hand using blind stitch.



Make sure templates are printed at 100% or "no scaling" and measure the guideline on the template to ensure you have printed to the correct size.

Quilt Detail



XXXXXXXXXXXXXXXXXXXXXXXXXXXXXXXXXXXX

*Congratulations
& enjoy*

XXXXXXXXXXXXXXXXXXXXXXXXXXXXXXXXXXXX

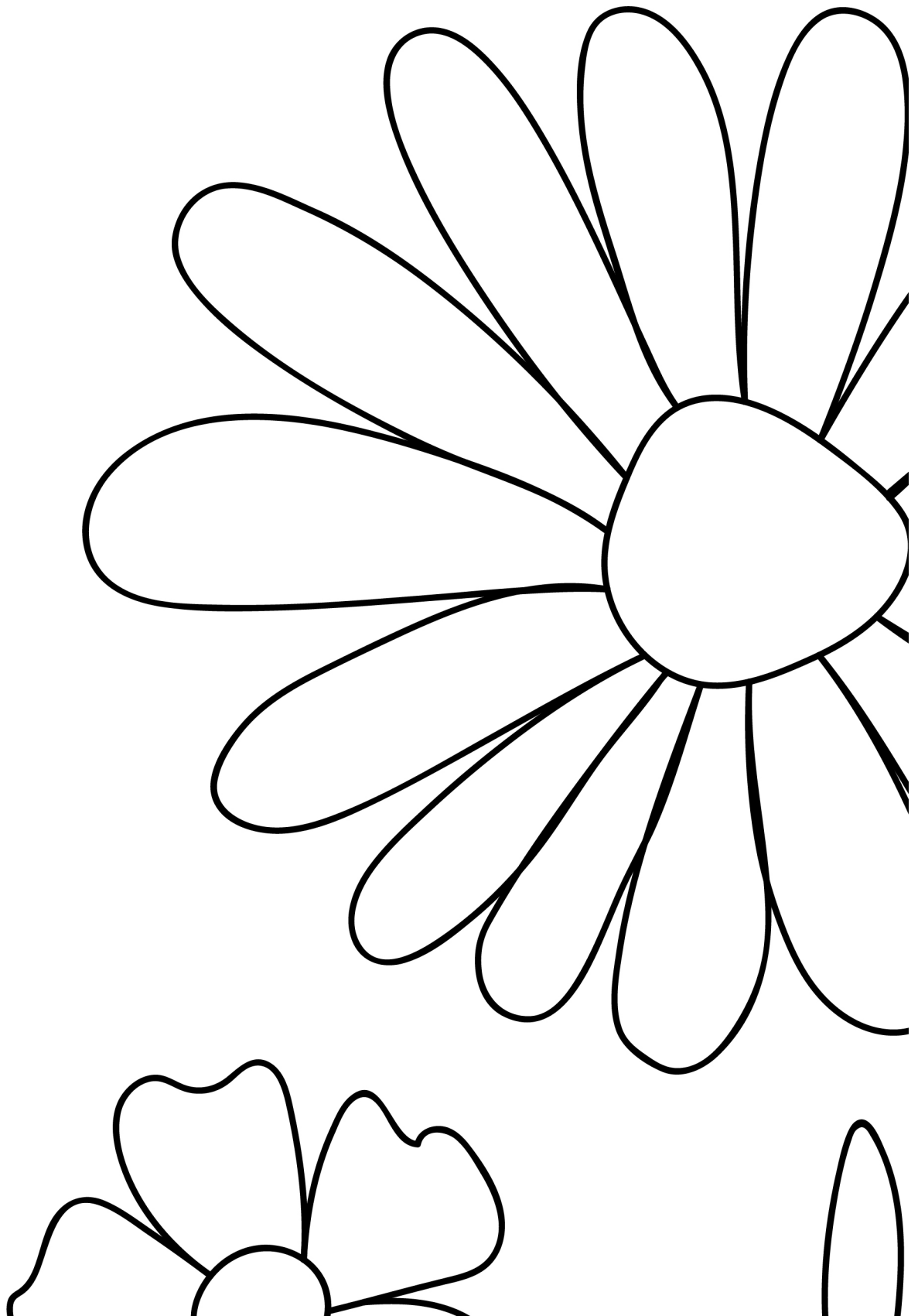


artgalleryfabrics.com

NOTE: While all possible care has been taken to ensure the accuracy of this pattern, We are not responsible for printing errors or the way in which individual work varies. Please read instructions carefully before starting the construction of this quilt. If desired, wash and iron your fabrics before starting to cut.

©2017 Courtesy of Art Gallery Quilts LLC. All Rights Reserved.

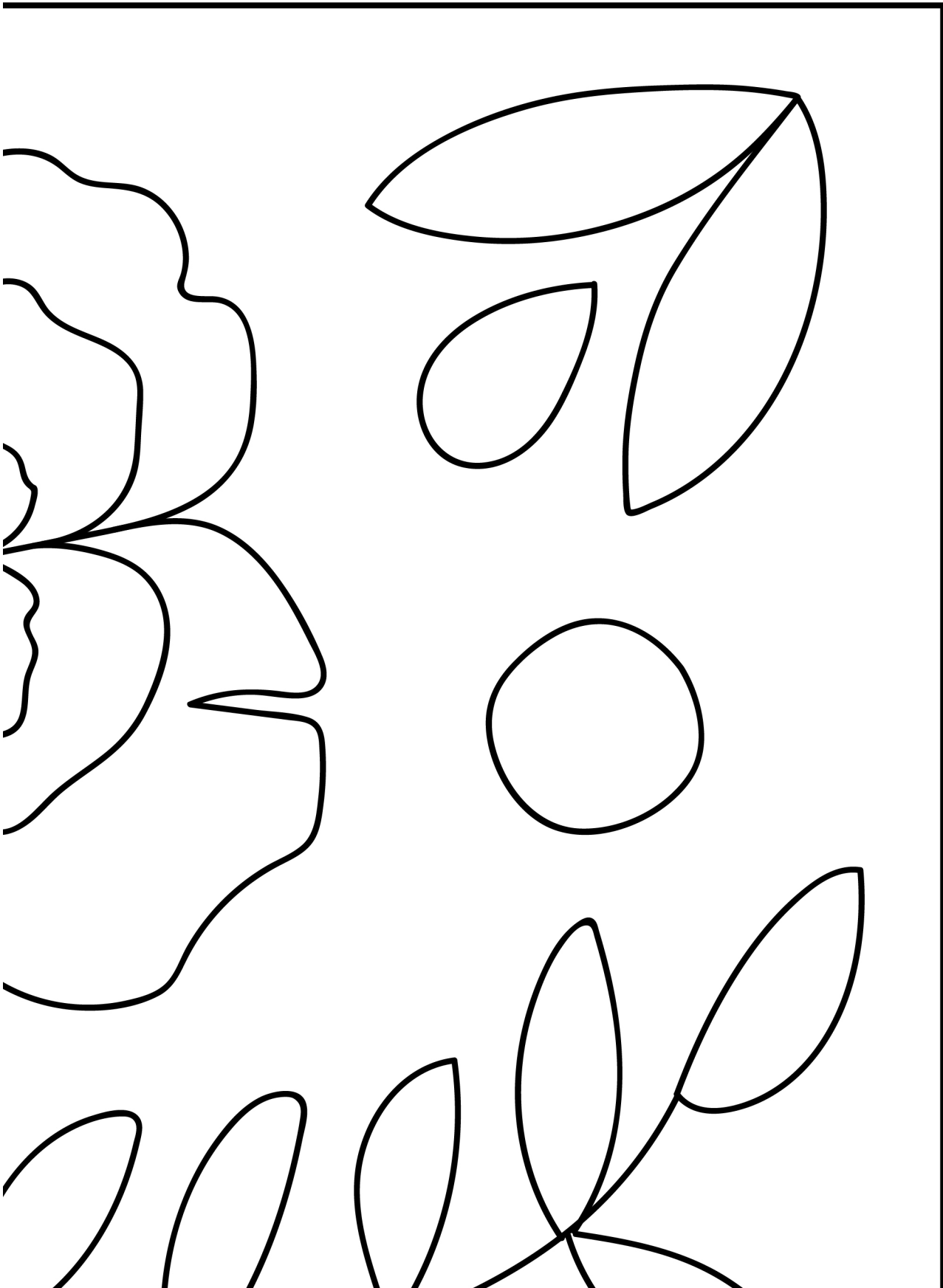
—



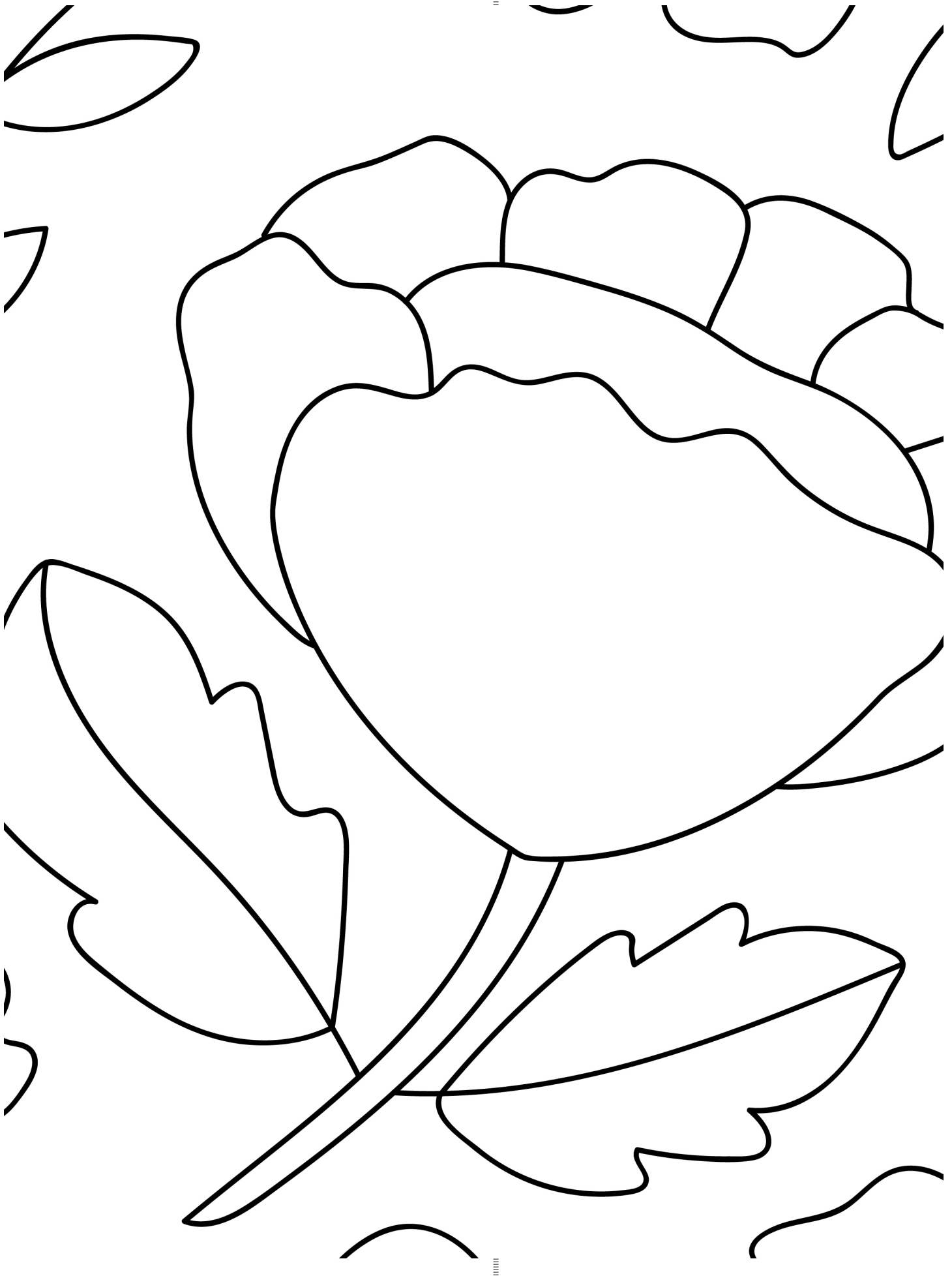




.....







|||||



|||||





