

hearts



FUSIONS

by AGF

FREE PATTERN

XXXXXXXXXXXXXXXXXXXXXXXXXXXX

hearts

QUILT DESIGNED BY AGF STUDIO AGFstudio

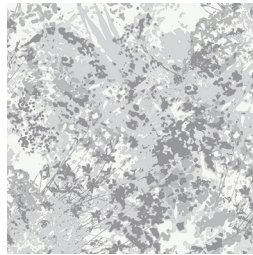


Bachelorette FUSION

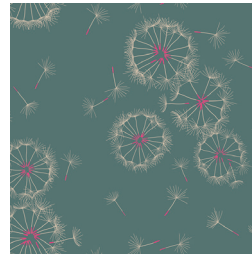
FABRICS DESIGNED BY AGF STUDIO



FUS-BC-500
GARDEN ROCKET BACHELORETTE



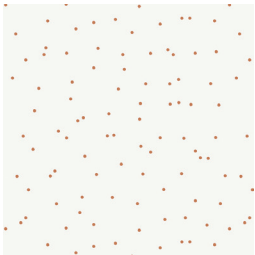
FUS-BC-501
REBEL BRUSHSTROKES BACHELORETTE



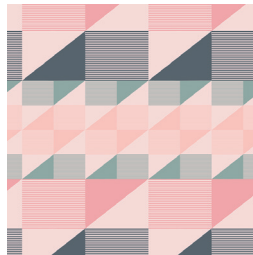
FUS-BC-502
TINY DANCER BACHELORETTE



FUS-W-603
ALL PATHS BACHELORETTE



FUS-BC-504
FIREFLY BACHELORETTE



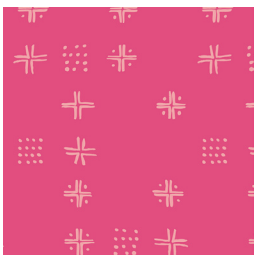
FUS-BC-505
TREKANT ROWS BACHELORETTE



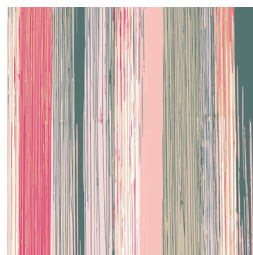
FUS-BC-506
PANACHE BACHELORETTE



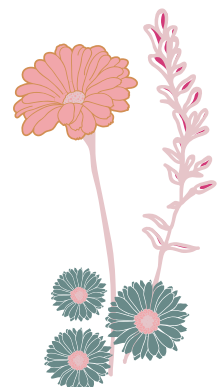
FUS-BC-507
FLOWER FIELD BACHELORETTE



FUS-BC-508
MUDCLOTH BACHELORETTE



FUS-BC-509
DRIPPING PAINT BACHELORETTE



FEEL THE DIFFERENCE © 2017 Courtesy of Art Gallery Quilts LLC. All Rights Reserved.



FINISHED SIZE | 59" x 61"

FABRIC REQUIREMENTS

Fabric A	FUS-BC- 501	1/3 yd.
Fabric B	FUS-BC- 500	3/4 yd.
Fabric C	FUS-BC- 507	1 yd.
Fabric D	FUS-BC- 502	1 1/8 yd.
Fabric E	FUS-BC- 508	1/3 yd.
Fabric F	FUS-BC- 509	1/3 yd.
Fabric G	FUS-BC- 503	1/3 yd.
Fabric H	PE-433	3 yd.

BINDING FABRIC

FUS-BC-507 Fabric **C** (included)

BACKING FABRIC

FUS-BC-505 5 yds. (suggested)

CUTTING DIRECTIONS

1/4" seam allowances are included.
WOF means width of fabric.

- Two (2) template **c** from fabrics **A**, **E**, **F**, and **G**.
- Two (2) template **d** from fabrics **A**, **E**, **F**, and **G**.
- Four (4) template **c** from fabrics **B**, **C**, and **D**.
- Four (4) template **d** from fabrics **B**, **C**, and **D**.
- Six (6) WOF x 1 1/2' strips from fabric **C**.
- Six (6) WOF x 2 1/2' strips from fabric **D**.
- Twenty (20) template **a** from fabric **H**.
- Twenty (20) template **b** from fabric **H**.
- Four (4) template **e** from fabric **H**.
- Four (4) template **f** from fabric **H**.
- Two (2) WOF x 10 7/8' rectangles from fabric **H**.
- Four (4) WOF x 2 1/2' strips from fabric **H**.
- Five (5) WOF x 5 1/2' strips from **H**.

CONSTRUCTION

Sew all rights sides together with 1/4" seam allowance.

- Join all the template **b** pieces to template **d** pieces.
- Join all the template **a** pieces to template **c** pieces.
- Match the notches.
- Join the left side to the right side, making sure the curves meet in the center seam.
- Take template **g** and subcut the rectangle into a triangle as shown in Diagram 1.
- You should end up with twenty (20) hearts.

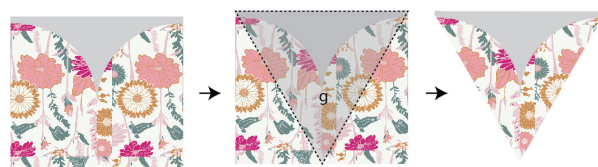


DIAGRAM 1

- Take the two (2) WOF x 10 7/8' rectangles from fabric **H** cut eight (8) 2 1/2' strips at a 30° angle to one side and eight (8) 2 1/2' strips at a 30° angle to the other side.
- Follow Diagram 2.

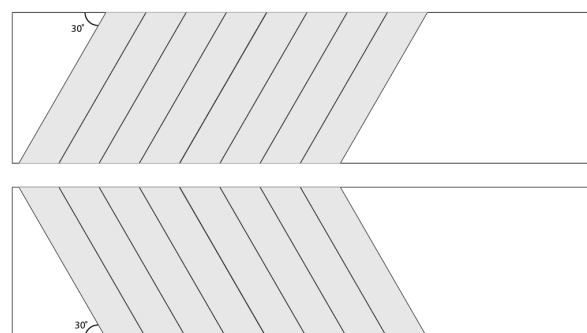


DIAGRAM 2

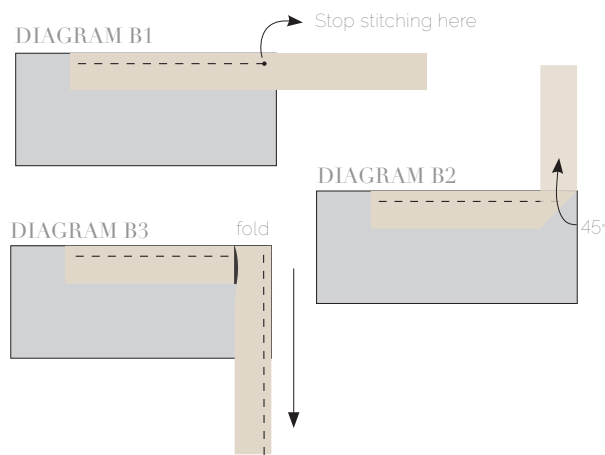
- Join the twenty (20) resulting hearts, the sixteen (16) previously cut 2 1/2' strips from fabric **H**, four (4) template **e** from fabric **H**, and four (4) template **f** from fabric **H**.
- For fabric placement and attachment follow Diagram 3.

BINDING

Sew rights sides together.

- Cut enough strips $1\frac{1}{2}$ ' wide by the width of the fabric **C** to make a final strip 250' long. Start sewing the binding strip in the middle of one of the sides of the quilt, placing the strip right side down and leaving an approximated 5' tail. Sew with $\frac{1}{4}$ ' seam allowance (using straight stitch), aligning the strip's raw edge with the quilt top's raw edge.
- Stop stitching $\frac{1}{4}$ ' before the edge of the quilt (**DIAGRAM B1**). Clip the threads. Remove the quilt from under the machine presser foot. Fold the strip in a motion of 45° and upward, pressing with your fingers (**DIAGRAM B2**). Hold this fold with your finger, bring the strip down in line with the next edge, making a horizontal fold that aligns with the top edge of the quilt (**DIAGRAM B3**). Start sewing at $\frac{1}{4}$ ' of the border, stitching all the layers. Do the same in the four corners of the quilt.

- Stop stitching before you reach the last 5 or 6 inches. Cut the threads and remove the quilt from under the machine presser foot. Lay the loose ends of the binding flat along the quilt edge, folding the ends back on themselves where they meet. Press them together to form a crease. Using this crease as the stitching line, sew the two open ends of the binding with right sides together (you can help yourself marking with a pencil if the crease is difficult to see).
- Trim seam to $\frac{1}{4}$ ' and press open. Complete the sewing. Turn binding to back of the quilt, turn raw edge inside and stitch by hand using blind stitch.



artgalleryfabrics.com

NOTE: While all possible care has been taken to ensure the accuracy of this pattern, We are not responsible for printing errors or the way in which individual work varies. Please read instructions carefully before starting the construction of this quilt. If desired, wash and iron your fabrics before starting to cut.

© 2017 Courtesy of Art Gallery Quilts LLC. All Rights Reserved.

hearts

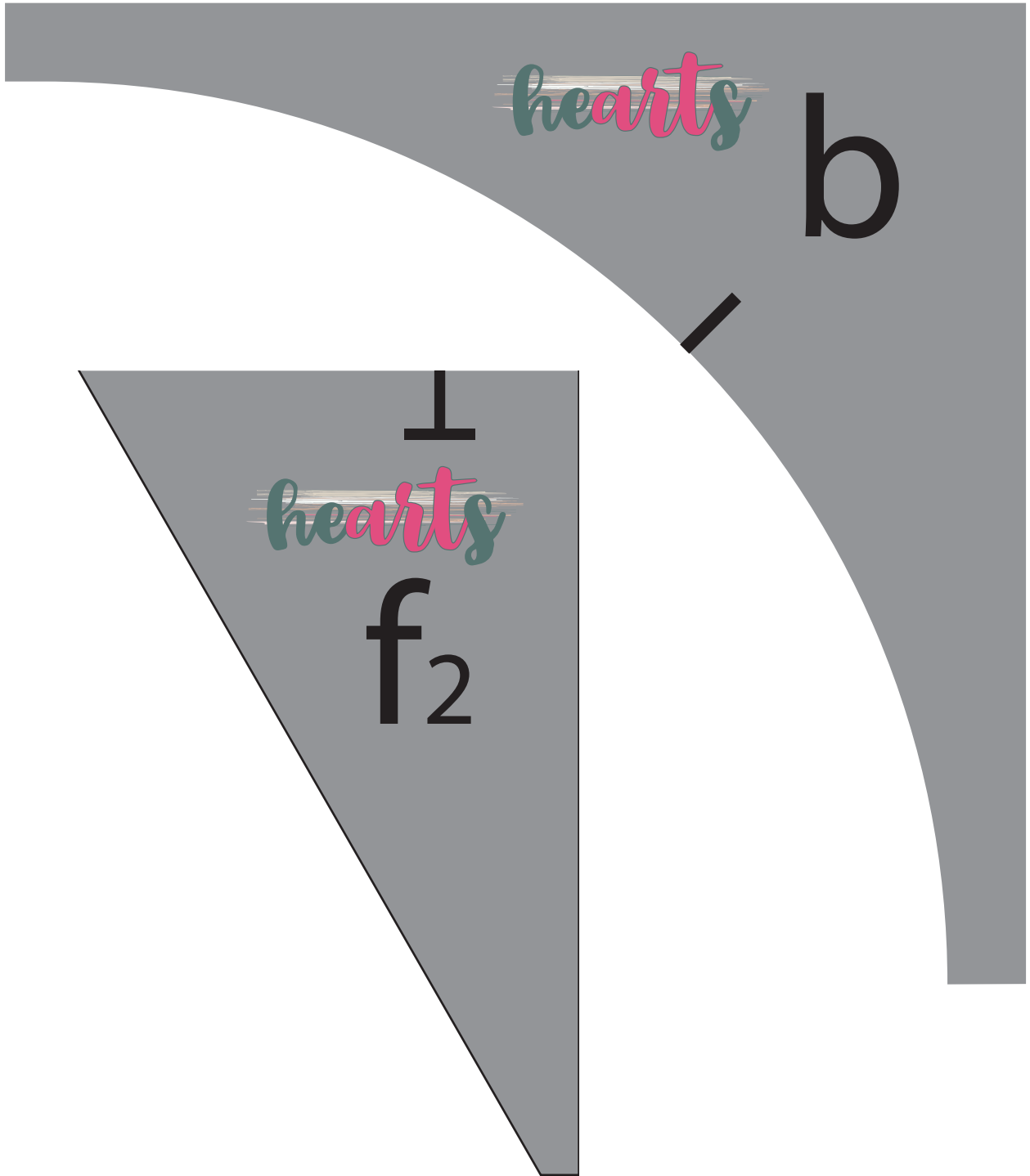
a



1

hearts

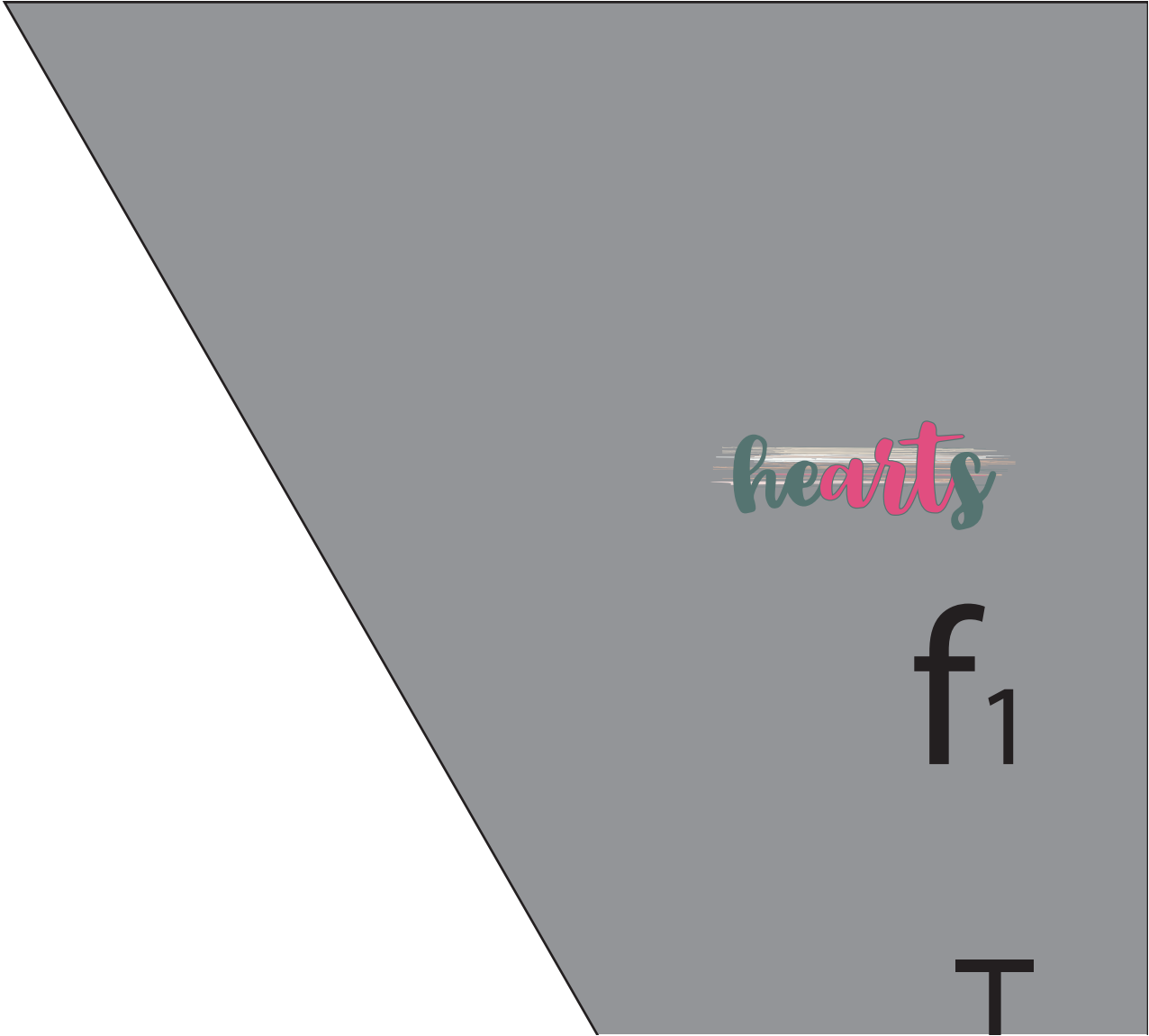
e₂

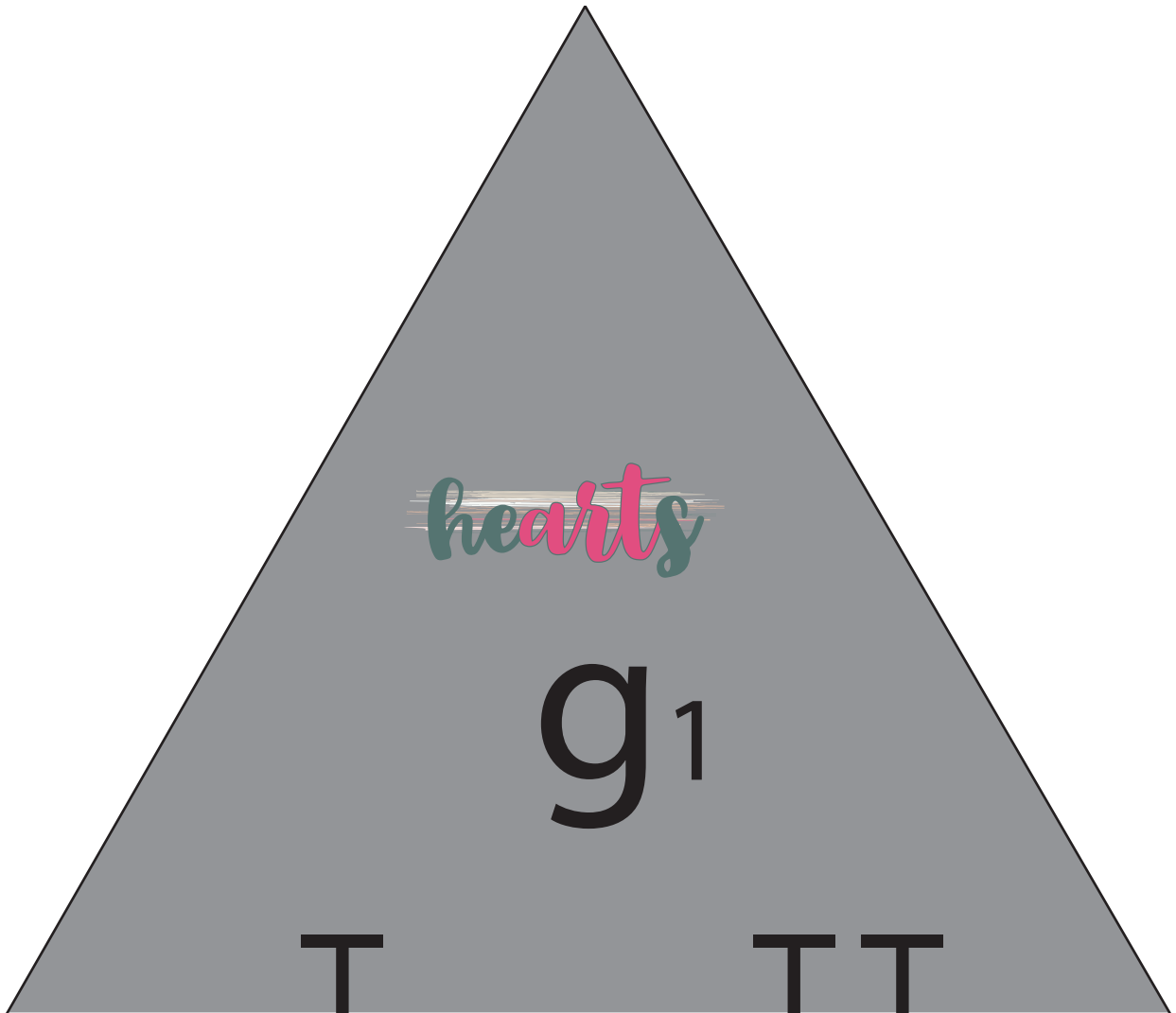


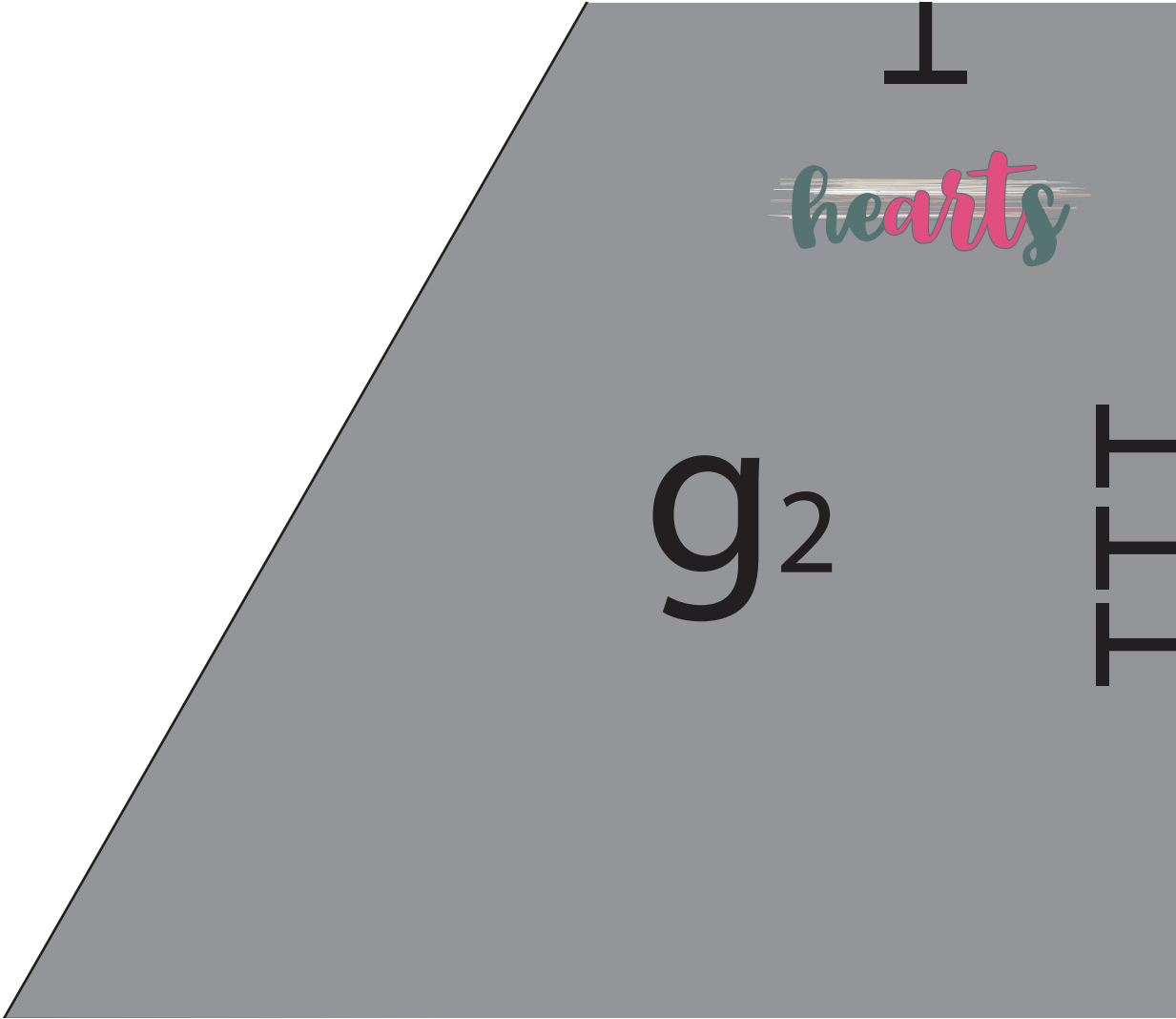
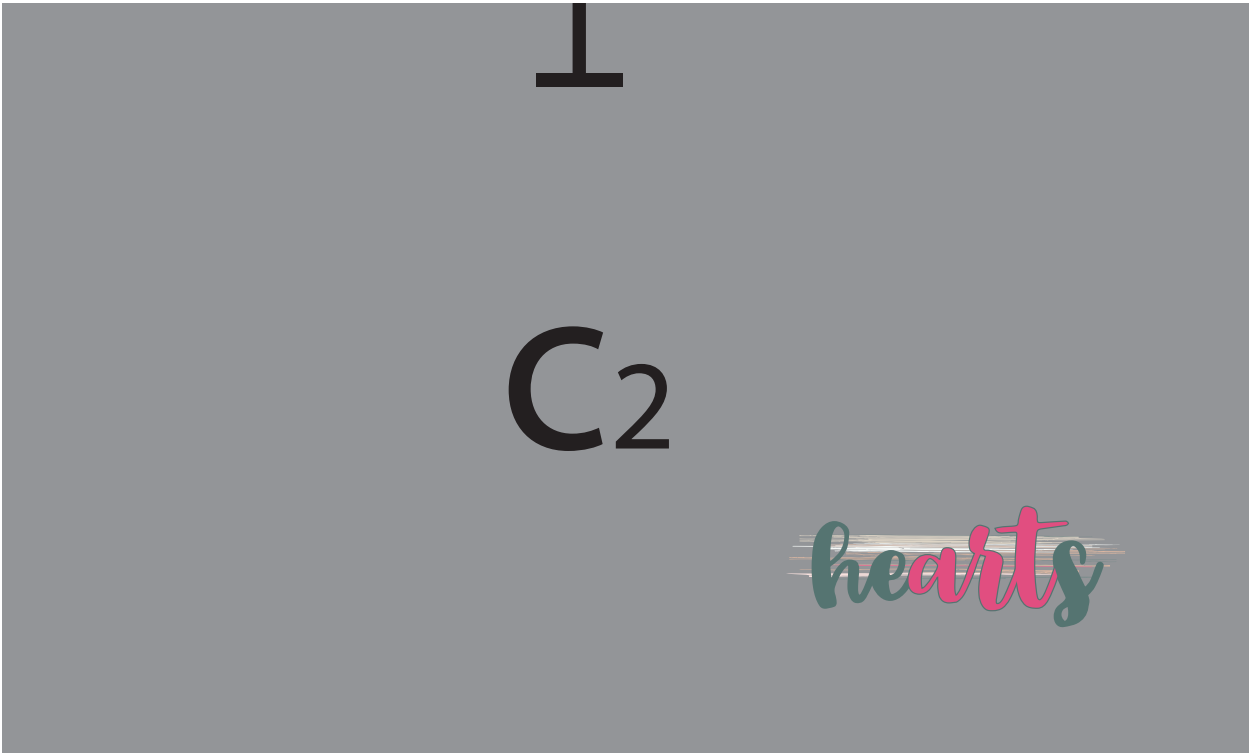
hearts

e₁

T







1

d₂

hearts

11

111

g₃

hearts

- The following diagram is smaller than the actual measurement. It only serves as a guide to join the different pieces in the previous pages to get the actual size of the templates needed to piece the Hearts quilt.

