

# Tulip Crush



FREE PATTERN

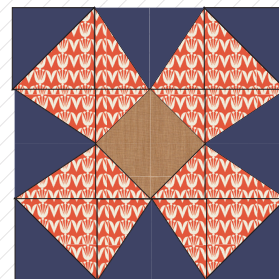
XXXXXXXXXXXXXXXXXXXXXXXXXXXX

ANGLES

A DIVISION OF AGF



# Tulip Crush



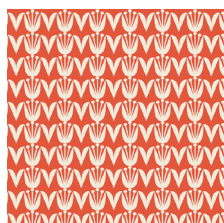
FABRICS DESIGNED BY DANA WILLARD

COLOR OPTION

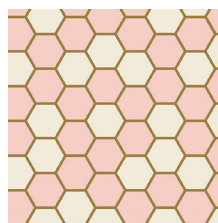
SUMMER



BSH-78400  
DUTCH BLOOM SUMMER



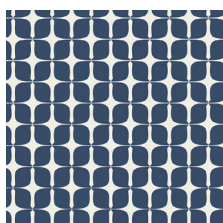
BSH-78401  
TULIPS COPPER



BSH-78402  
HEX ROSE



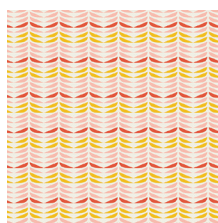
BSH-78403  
FLORET BRIGHT



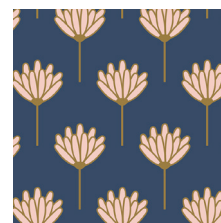
BSH-78405  
MOD PAPER INDIGO



BSH-78406  
CAT NAP PINK



BSH-78407  
RETRO PETALS POWDER

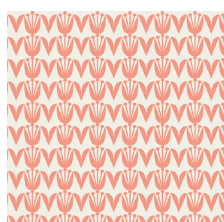


BSH-78408  
FLORET SUNKISSED

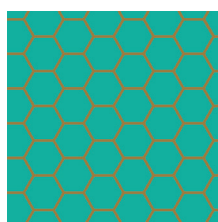
SPRING



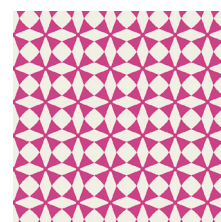
BSH-88400  
DUTCH BLOOM SPRING



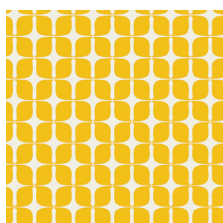
BSH-88401  
TULIPS PEACH



BSH-88402  
HEX TEAL



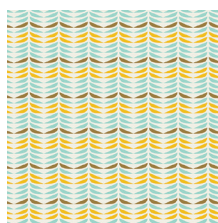
BSH-88404  
WINDMILL MAGENTA



BSH-88405  
MOD PAPER CITRUS



BSH-88406  
CAT NAP MINT



BSH-88408  
RETRO PETAL MIST



BSH-88409  
FLORET HONEYDEW



FEEL THE DIFFERENCE © 2017 Courtesy of Art Gallery Quilts LLC. All Rights Reserved.

# Tulip Crush

FINISHED SIZE | 20" x 20"

## FABRIC REQUIREMENTS

Fabric **A** BSH-78401 1/3 yd.  
Fabric **B** DEN-S-2008 7/8 yd.  
Fabric **C** DEN-S-2006 F8

BACKING FABRIC  
DEN-S-2008 (included)

## CUTTING DIRECTIONS

1/4" seam allowances are included.  
WOF means width of fabric.

Two (2) 6 7/8" perfect square from fabric **A**

Four (4) from Pattern 1, left to right up, from fabric **A**

Four (4) of Pattern 1, right to left up, from fabric **A**

Two (2) 4 7/8" perfect square from fabric **A**

Two (2) 6 7/8" square from fabric **B**

Four (4) of Pattern 2 from fabric **B**

One (1) 5 3/4" perfect square from fabric **C**

## CONSTRUCTION

Sew all rights sides together with 1/4" seam allowance.

- Start with the construction of the HST
- To accomplish the HST construction use the 6 7/8" squares from fabrics **A-B**.
- Using a water-soluble marker or a pencil, mark a diagonal line across the wrong side of all the mentioned fabric squares (DIAGRAM 1)

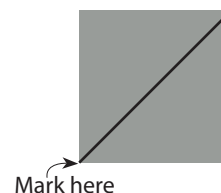


DIAGRAM 1

- Find HST combinations and quantities on diagram 2.
- Place one of the marked squares, right sides together with its corresponding square.
- Sew 1/4" on both sides of the marked line.
- Cut piece in half along the drawn line.
- Press seams open
- Pair up the rest of the marked squares.
- Repeat to make a total of 4 half-square triangles.
- Set aside.

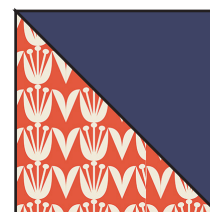


DIAGRAM 1

- Now, take an Pattern 2 piece from Fabric **B** and pair on each side with an Pattern 1 piece from Fabric **A**
- Repeat the same process until you complete 4 of Pattern 1-2

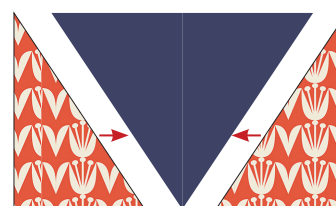


DIAGRAM 2

- Now, take an  $4\frac{7}{8}$ " perfect square from Fabric **A** and cut it on the diagonal.
- Repeat the same process for the other  $4\frac{7}{8}$ " perfect square from Fabric **A**
- You will have 4 triangles
- Take the  $5\frac{3}{4}$ " perfect square from fabric **C** and start pairing each 4 triangle from Fabric **A** on each side as diagram below

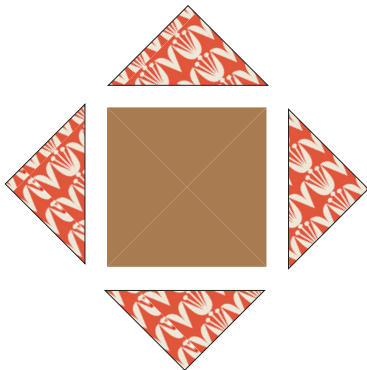


DIAGRAM 3

## ASSEMBLING THE TOP PILLOW

- Follow the diagram below in order to assemble each row.

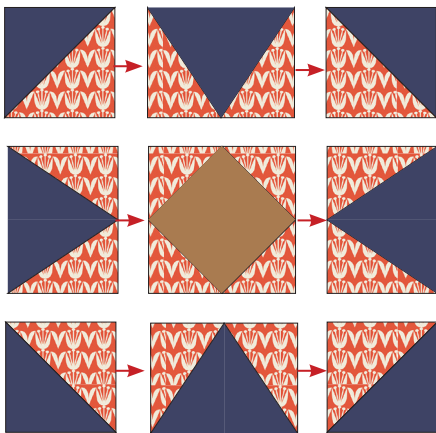


DIAGRAM 4

- Now assemble as the following:

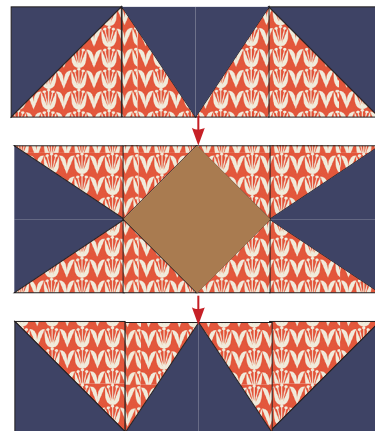


DIAGRAM 5

## CREATING THE BACK PILLOW

*Sew all rights sides together with  $\frac{1}{4}$ " seam allowance. Press open.*

- To make a envelope back for your pillow take both  $21" \times 17"$  rectangles and fold one  $14"$  side on each rectangle in  $\frac{1}{2}"$  and press and then fold another  $\frac{1}{2}"$  and press.
- Top stitch as close to the edge as possible.
- Place rectangles right side together on top of each other to the front of your pillow and stitch all the way around your pillow at  $\frac{1}{4}"$  seam allowance.
- Clip corners at seam allowance and flip piece to the right side of the fabric.
- Fill pillow with a  $20" \times 20"$  pillow form and enjoy!



[artgalleryfabrics.com](http://artgalleryfabrics.com)

NOTE: While all possible care has been taken to ensure the accuracy of this pattern, We are not responsible for printing errors or the way in which individual work varies. Please read instructions carefully before starting the construction of this quilt. If desired, wash and iron your fabrics before starting to cut.

© 2017 Courtesy of Art Gallery Quilts LLC. All Rights Reserved.





# PATTERN 2