

Four square quilt blocks are displayed in a 2x2 grid. Each block features a central square surrounded by eight triangles. The top-left block has a central square with a red and white checkered pattern, surrounded by triangles in shades of brown, tan, and white. The top-right block has a central square with a white background and a small black silhouette of a person, surrounded by triangles in shades of brown, tan, and white. The bottom-left block has a central square with a white background and a small black silhouette of a person, surrounded by triangles in shades of brown, tan, and white. The bottom-right block has a central square with a white background and a small black silhouette of a person, surrounded by triangles in shades of brown, tan, and white.



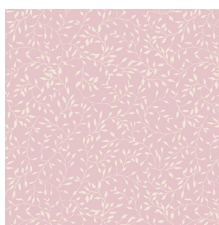
Lambkin

FABRICS DESIGNED BY BONNIE CHRISTINE

THISTLE



LMB-18720
MY DARLING



LMB-18722
SWEET WISTERIA



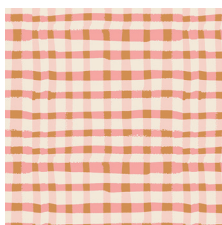
LMB-18724
WIND OBSERVER FOG



LMB-18725
LITTLE FLORICULTURIST



LMB-18727
PRETTY TWIGGY



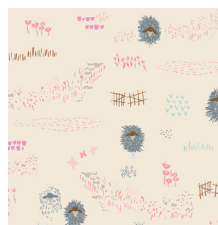
LMB-18729
WOOLY BLUSH



LMB-18730
ARISTA KEEPSAKE



LMB-18731
KEEPING WATCH MIST



LMB-18732
LAMBSCAPE ASHEN

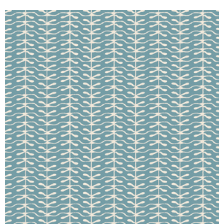


WOT-21409
VALLEY VIEW RIVIERA

OATS



LMB-28721
SIR WOOLY



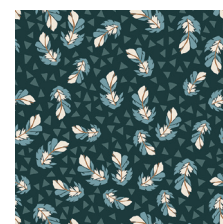
LMB-28723
WINTER SPROUT



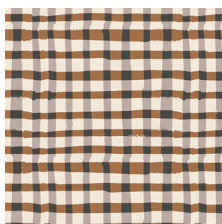
LMB-28724
WIND OBSERVER SLATE



LMB-28726
LITTLE ENTOMOLOGIST



LMB-28728
DUSK NESTLING



LMB-28729
WOOLY UMBER



LMB-28730
ARISTA OATS



LMB-28731
KEEPING WATCH DIM



LMB-28732
LAMBSCAPE YONDER



LMB-28733
VALLEY VIEW ECHO



Sew all rights sides together with $\frac{1}{4}$ " seam allowance.

FINISHED SIZE | 10" x 10"

FABRIC REQUIREMENTS

Fabric A	DEN-S-2002	F8.
Fabric B	LMB-28721	F8.
Fabric C	LMB-28729	F8.
Fabric D	PE-432	F8.
Fabric E	LMB-28732	F8.
Fabric F	DEN-S-2006	F8.
Fabric G	LMB-28726	F8.
Fabric H	LMB-18729	F8.
Fabric I	PE-460	F8.
Fabric J	PE-408	F8.
Fabric K	PE-440	F8.
Fabric L	LMB-18732	F8.

CUTTING DIRECTIONS

$\frac{1}{4}$ " seam allowances are included.
WOF means width of fabric.

Nine (9) perfect squares of $3\frac{3}{8}$ " from Fabric **A**

Two (2) rectangles of $5\frac{1}{2}$ " x $3\frac{3}{8}$ " from Fabric **A**

One (1) perfect square of 4" from Fabric **B**

Eight (8) perfect squares of $3\frac{3}{8}$ " from Fabric **C**

Five (5) perfect squares of $3\frac{3}{8}$ " from Fabric **D**

One (1) perfect square of 4" from Fabric **E**

Four (4) rectangles of $5\frac{1}{2}$ " x 3" from Fabric **E, J**

Six (6) perfect squares of $3\frac{3}{8}$ " from Fabric **F, G**

Four (4) perfect squares of $3\frac{3}{8}$ " from Fabric **H, K, L**

Two (2) perfect squares of $3\frac{3}{8}$ " from Fabric **I, J**

BLOCK #1

- Start by pairing all the HST:
- Pair a $\frac{3}{8}$ " perfect square from Fabric **A** with an $3\frac{3}{8}$ " perfect square from Fabric **C**
- Draw a diagonal line on the wrong side of each pair
- Sew a $\frac{1}{4}$ " seam on either side of the drawing line
- Cut directly on the drawn line
- You will have a total of 4 HST with Fabric **A-C**
- Repeat the same process for fabrics **A-L**
- You will have a total of 8 HST with Fabric **A-L**



DIAGRAM 1

- Now, take the two remaining $\frac{3}{8}$ " perfect square from Fabric **A** and cut on the diagonal line so you have four (4) half square triangles.
- Take the 4" perfect square from Fabric **B** and pair on each side the four (4) half square triangles from Fabric **A**. This will be your center piece



DIAGRAM 2

- Now, pair an **A-C** HST with an **A-L** HST.
- Repeat same process but invert the order: **L-A** with **C-A**
- Now, pair piece **A-C-A-L** with the center piece and on the bottom, pair the other **L-A-C-A** piece

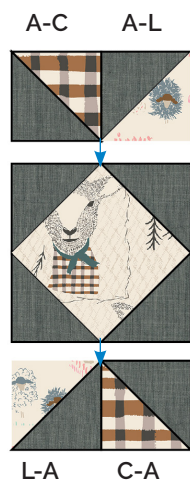


DIAGRAM 3

- Now, follow diagram below for the 2 other rows:

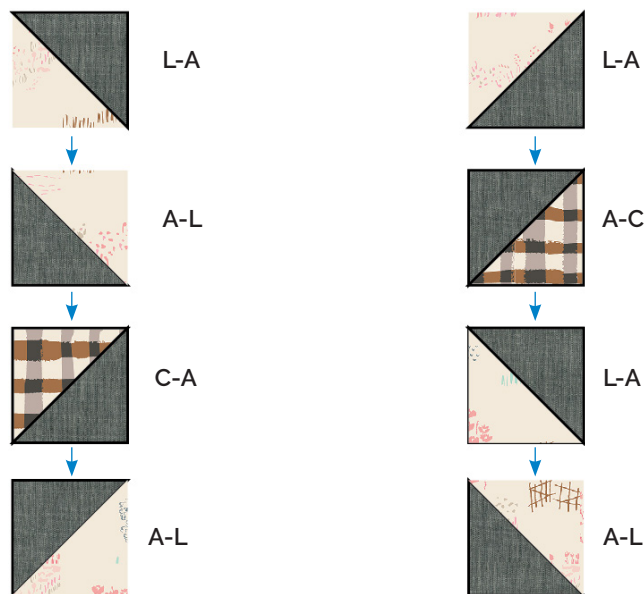


DIAGRAM 4

- Now, follow diagram below for the block assembly:

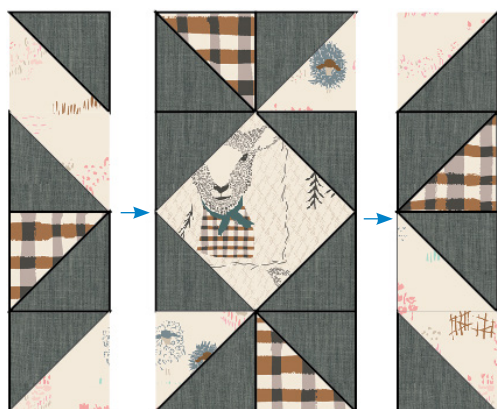


DIAGRAM 5

XXXXXXXXXXXXXXXXXXXXXXXXXXXX

- Once you have the block assembled, quilt as desired.



BLOCK #2

- Start by pairing all the HST:
- Pair a $3\frac{3}{8}$ " perfect square from Fabric **C** with an $3\frac{3}{8}$ " perfect square from Fabric **D**
- Draw a diagonal line on the wrong side of each pair
- Sew a $\frac{1}{4}$ " seam on either side of the drawing line
- Cut directly on the drawn line
- You will have a total of 6 HST with Fabric **C-D**
- Repeat the same process for fabrics **A-D**
- You will have a total of 2 HST with Fabric **A-D**

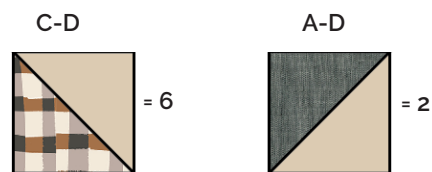


DIAGRAM 6

Flying Geese Construction

- Place a marked $3\frac{3}{8}$ " square from Fabric **D** right sides together on the left side of a $5\frac{1}{2}$ " x 3" rectangle from Fabric **A** as shown.
- Stitch on the drawn line. Trim seam allowance to $\frac{1}{4}$ ". Press corner open. In the same manner, sew a $3\frac{3}{8}$ " square from Fabric **C** to the remaining corner, trim and press.
- Repeat the same process in order to have a total of 2 flying geese.

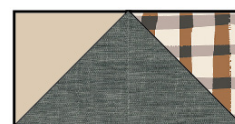


DIAGRAM 7

- Now, take the two remaining $\frac{3}{8}$ " perfect square from Fabric **C** and cut on the diagonal line so you have four (4) half square triangles.
- Take the 4" perfect square from Fabric **E** and pair on each side the four (4) half square triangles from Fabric **C**. This will be your center piece



DIAGRAM 8

- Now, pair an **C-D** HST with another **C-D** HST.
- Repeat same process but invert the order: **D-C** with **D-C**
- Now, pair piece **C-D-C-D** with the center piece and on the bottom, pair the other **D-C-D-C** piece



DIAGRAM 9

- Now, follow diagram below for the 2 other rows:

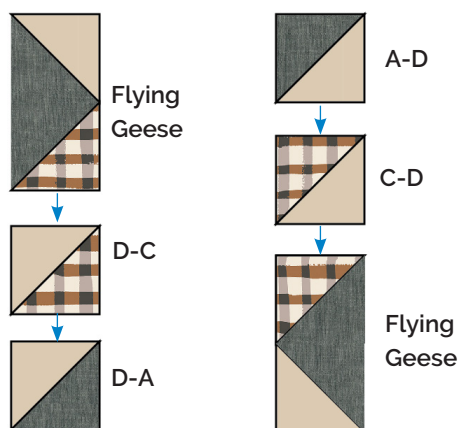


DIAGRAM 10



- Now, follow diagram below for the block assembly:

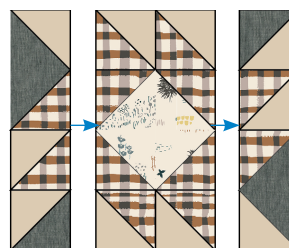


DIAGRAM 11

- Once you have the block assembled, quilt as desired.



BLOCK #3

- Start by pairing all the HST:
- Pair a $\frac{3}{8}$ " perfect square from Fabric **F** with an $3\frac{3}{8}$ " perfect square from Fabric **G**
- Draw a diagonal line on the wrong side of each pair
- Sew a $\frac{1}{4}$ " seam on either side of the drawing line
- Cut directly on the drawn line
- You will have a total of 4 HST with Fabric **F-G**
- Repeat the same process for fabrics **I-H**
- You will have a total of 4 HST with Fabric **I-H**



DIAGRAM 12

Flying Geese Construction

- Place a marked $3\frac{3}{8}$ " square from Fabric **G** right sides together on the left side of a $5\frac{1}{2}$ " x 3" rectangle from Fabric **J** as shown.
- Stitch on the drawn line. Trim seam allowance to $\frac{1}{4}$ ". Press corner open. In the same manner, sew a $3\frac{3}{8}$ " square from Fabric **G** to the remaining corner, trim and press.
- Repeat the same process in order to have a total of 4 flying geese.



DIAGRAM 13

- Now, pair an **I-H** HST with another **I-H** HST in the following direction below:

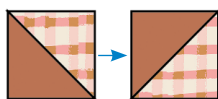


DIAGRAM 14

- Repeat same process as diagram below:

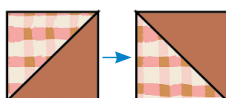


DIAGRAM 15

- Now, pair both pieces together as diagram below: (this will be your center piece)

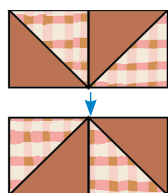


DIAGRAM 16

- Now, follow diagram below for the row assembly:

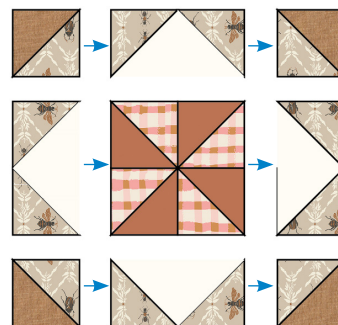


DIAGRAM 17

- Now, follow diagram below for the final block assembly:

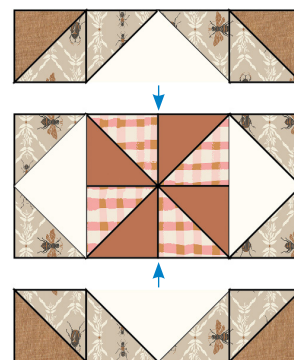


DIAGRAM 18

- Once you have the block assembled, quilt as desired.



BLOCK #4

- Start by pairing all the HST:
- Pair a $3\frac{3}{8}$ " perfect square from Fabric **F** with an $3\frac{3}{8}$ " perfect square from Fabric **H**
- Draw a diagonal line on the wrong side of each pair
- Sew a $\frac{1}{4}$ " seam on either side of the drawing line
- Cut directly on the drawn line
- You will have a total of 4 HST with Fabric **F-H**
- Repeat the same process for fabrics **K-F**
- You will have a total of 4 HST with Fabric **K-F**

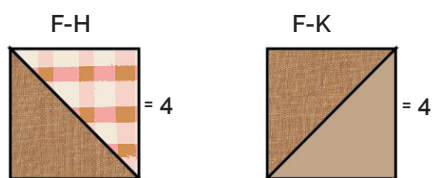


DIAGRAM 19

Flying Geese Construction

- Place a marked $3\frac{3}{8}$ " square from Fabric **J** right sides together on the left side of a $5\frac{1}{2}$ " x 3" rectangle from Fabric **E** as shown.
- Stitch on the drawn line. Trim seam allowance to $\frac{1}{4}$ ". Press corner open. In the same manner, sew a $3\frac{3}{8}$ " square from Fabric **K** to the remaining corner, trim and press.
- Repeat the same process in order to have a total of 4 flying geese.

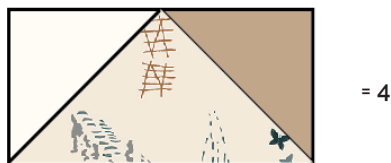


DIAGRAM 20

- To assemble the pieces together, take an **F-H** HST and pair it with an **K-F** HST.
- Take one Flying Geese piece and pair it at the bottom as diagram below:
- Repeat the same process until you have 4 blocks

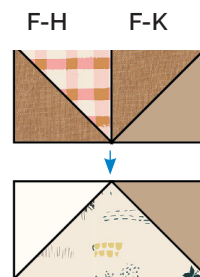


DIAGRAM 21

- Now, take one block and pair it with another block, rotating it as diagram below:

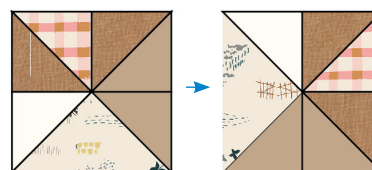


DIAGRAM 22

- Take another block and pair it with the other block, in the direction below:

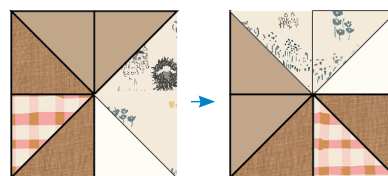


DIAGRAM 23

- Now, take both pieces and pair them

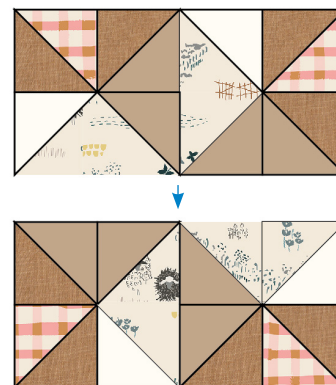


DIAGRAM 24

- Once you have the block assembled, quilt as desired.



artgalleryfabrics.com

NOTE: While all possible care has been taken to ensure the accuracy of this pattern, We are not responsible for printing errors or the way in which individual work varies. Please read instructions carefully before starting the construction of this quilt. If desired, wash and iron your fabrics before starting to cut.

© 2017 Courtesy of Art Gallery Quilts LLC. All Rights Reserved.