



XXXXXXXXXXXXXXXXXXXXXXXXXXXX

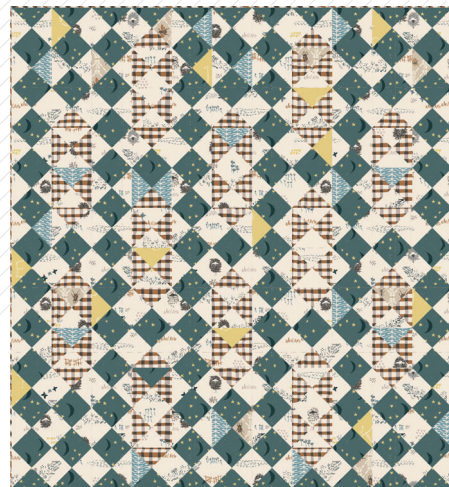




QUILT DESIGNED BY BONNIE CHRISTINE AND MAXIE MAKES



FABRICS DESIGNED BY BONNIE CHRISTINE



'OATS' COLOR VARIATION

THISTLE



**LMB-18720**  
MY DARLING



**LMB-18722**  
SWEET WISTERIA



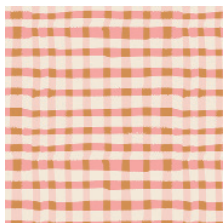
**LMB-18724**  
WIND OBSERVER FOG



**LMB-18725**  
LITTLE FLORICULTURIST



**LMB-18727**  
PRETTY TWIGGY



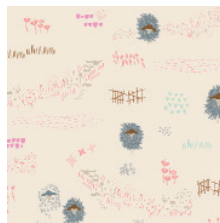
**LMB-18729**  
WOOLY BLUSH



**LMB-18730**  
ARISTA KEEPSAKE



**LMB-18731**  
KEEPING WATCH MIST



**LMB-18732**  
LAMBSCAPE ASHEN

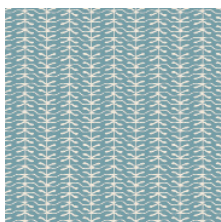


**WOI-21409**  
VALLEY VIEW RIVIERA

OATS



**LMB-28721**  
SIR WOOLY



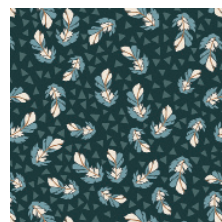
**LMB-28723**  
WINTER SPROUT



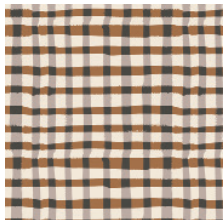
**LMB-28724**  
WIND OBSERVER SLATE



**LMB-28726**  
LITTLE ENTOMOLOGIST



**LMB-28728**  
DUSK NESTLING



**LMB-28729**  
WOOLY UMBER



**LMB-28730**  
ARISTA OATS



**LMB-28731**  
KEEPING WATCH DIM



**LMB-28732**  
LAMBSCAPE YONDER



**LMB-28733**  
VALLEY VIEW ECHO





FINISHED SIZE | 62" x 68"

## FABRIC REQUIREMENTS

Thistle Colorway:

Fabric <b>A</b>	LMB-18732	2 ¼ yd.
Fabric <b>B</b>	LMB-18731	1 ¾ yd.
Fabric <b>C</b>	LMB-18729	¾ yd.
Fabric <b>E</b>	LMB-18724	¾ yd.
Fabric <b>D</b>	LMB-18725	¾ yd.
Fabric <b>F</b>	LMB-18722	¼ yd.

Oats Colorway:

Fabric <b>A</b>	LMB-28732	2 ¼ yd.
Fabric <b>B</b>	LMB-28731	2 yd.
Fabric <b>C</b>	LMB-28730	¼ yd.
Fabric <b>D</b>	LMB-28723	¾ yd.
Fabric <b>E</b>	LMB-28729	1 ½ yd.
Fabric <b>F</b>	LMB-28726	¼ yd.

### BACKING FABRIC

LMB-18730 4 ¼ yd. (*Thistle*)

LMB-28730 4 ¼ yd. (*Oats*)

### BINDING FABRIC

LMB-18729- (fabric **C**) included

LMB-18729- (fabric **E**) included

## CUTTING DIRECTIONS

*¼" seam allowances are included.*

*All strips refer to cutting Width of Fabric*

### From Fabric **A**:

- Cut six (6) 4 ½" strips and sub-cut fifty-four (54) 4 ½" squares
- Cut two (2) 7" strips and sub-cut six (6) 7" squares.
- Cut through the diagonal centers in both directions to make 24 triangles for side setting triangles (you will only use 21). Set aside.
- Cut seven (7) 5" strips. Sub-cut forty-nine (49) 5" squares for half square triangles.

XXXXXXXXXXXXXXXXXXXXXXXXXXXX

### From Fabric **B**:

- Cut (10) ten 4 ½" strips and sub cut (85) eighty-five 4 ½" squares
- Cut (2) two 7" strips and sub-cut (6) six 7" squares.
- Cut through the diagonal centers in both directions to make 24 triangles for side setting triangles (you will only use 22). Set aside.
- From leftovers from above step, cut (1) one 5" square.

### From Fabric **C**:

- Cut (1) one 7" strip and sub-cut (1) one 7" square. Cut the 7" square in half, diagonally, in both directions, making 4 triangles. (You will need only 2.)
- From the remaining, cut (6) six 5" squares

### From Fabric **D**:

- Cut one 7" square. Cut through the diagonal centers in both directions to make 4 triangles. (You will need only 1.)
- Cut one (1) 5" strip and sub-cut nine (9) 5" squares

### From Fabric **E**:

- Cut five (5) 5" strips. Sub-cut thirty-eight (38) 5" squares.

### From Fabric **F**:

- Cut one (1) 5" strip and sub-cut five (5) 5" squares.

## CONSTRUCTION

*Sew all rights sides together with ¼"seam allowance.*

### Making the Half Square Triangles (HST)

- This method makes two HST units at a time. Pair the following 5" squares:

#### Step A:

- Pair Five (5) Fabric **A** with five (5) Fabric **C**
- Pair Eight (8) Fabric **A** with eight (8) Fabric **D**
- Pair Thirty-three (33) Fabric **A** with Thirty-three (33) Fabric **E**
- Pair Three (3) Fabric **A** with Three (3) Fabric **F**
- Pair One (1) Fabric **B** with one (1) Fabric **E**
- Pair One (1) Fabric **C** with one (1) Fabric **E**
- Pair One (1) Fabric **D** with One (1) Fabric **E**
- Pair Two (2) Fabric **E** with two (2) Fabric **F**

## Step B:

- Draw a diagonal line on the wrong side of the lightest square in each pair.
- Place the pair right sides together and stitch diagonally, 1/4" away from both sides of the line.
- Cut on the line.
- Open and press the seam allowance open.
- Trim and square the HST units to 4 1/2". (Extra fabric has been included for accuracy so they must all be trimmed to size.)

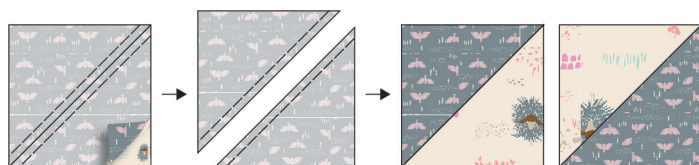


DIAGRAM 1

## ASSEMBLING THE QUILT TOP

*Sew all rights sides together with 1/4" seam allowance. Press open.*

- Arrange blocks and Half Square Triangle Units as shown (in diagram 2) in diagonal rows for an on point layout. Begin with the two triangles in row one (upper left corner of the quilt). Sew row two, beginning with a light side setting triangle, a square, a HST, and ending with a dark side setting triangle.

### Row 1:

A triangle > B triangle

### Row 2:

A triangle > B square > AC unit > B triangle

### Row 3:

A triangle > B square > AD unit > B square > A square > B triangle

### Row 4:

A triangle > B square > A square > B square > AF unit > B square > A square > B triangle

### Row 5:

A triangle > B > AE > AE > A > B > AE > AE > AF > B triangle

### Row 6:

A triangle > B > AE > AD > AE > B > AE > A > AE > B > AD > B triangle

### Row 7:

C triangle > B > AD > AE > AE > B > A > AE > AE > B > AC > B > A > B triangle

### Row 8:

A triangle > B > A > B > A > B > AD > B > A > B > A > B > AD > B > A > B triangle

### Row 9:

A triangle > B > AE > EF > A > B > AE > AE > AD > B > AE > DE > A > B > AE > EF > AD > B triangle

### Row 10:

C triangle > B > AE > AD > CE > B > AE > AC > AE > B > AE > A > AE > B > AE > AC > AE > B > AC > B triangle

### Row 11:

A triangle > B > A > AE > AE > B > A > AE > AE > B > A > AE > AE > B > A > AE > AE > B > A > B > A > B triangle

### Row 12:

A triangle > B > A > B > A > B > A > B > A > B > A > B > AC > B > A > B > AC > B > A > B > AF > B > A triangle

### Row 13:

B triangle > A > B > A > B > AE > BE > A > B > AE > AE > A > B > AE > AE > AD > B > AE > AE > A > B > A triangle

### Row 14:

B triangle > A > B > AE > A > AE > B > AE > AC > AE > B > AE > A > AE > B > AE > AD > AE > B > A triangle

### Row 15:

B triangle > AD > AE > AE > B > A > AE > AE > B > A > AE > AE > B > A > AE > AE > B > A triangle

### Row 16:

B triangle > A > B > AD > B > A > B > A > B > AD > B > A > B > A > B > A triangle

### Row 17:

B triangle > A > B > AF > B > AE > AE > A > B > AE > EF > A > B > A triangle

### Row 18:

B triangle > A > B > AE > A > AE > B > AE > AD > CE > B > A triangle

### Row 19:

B triangle > AD > AE > AE > B > A > AE > AE > B > A triangle

### Row 20:

B triangle > A > B > AC > B > A > B > A triangle

### Row 21:

B triangle > AF > B > A > B > A triangle

### Row 22:

B triangle > A > B > D triangle

### Row 23:

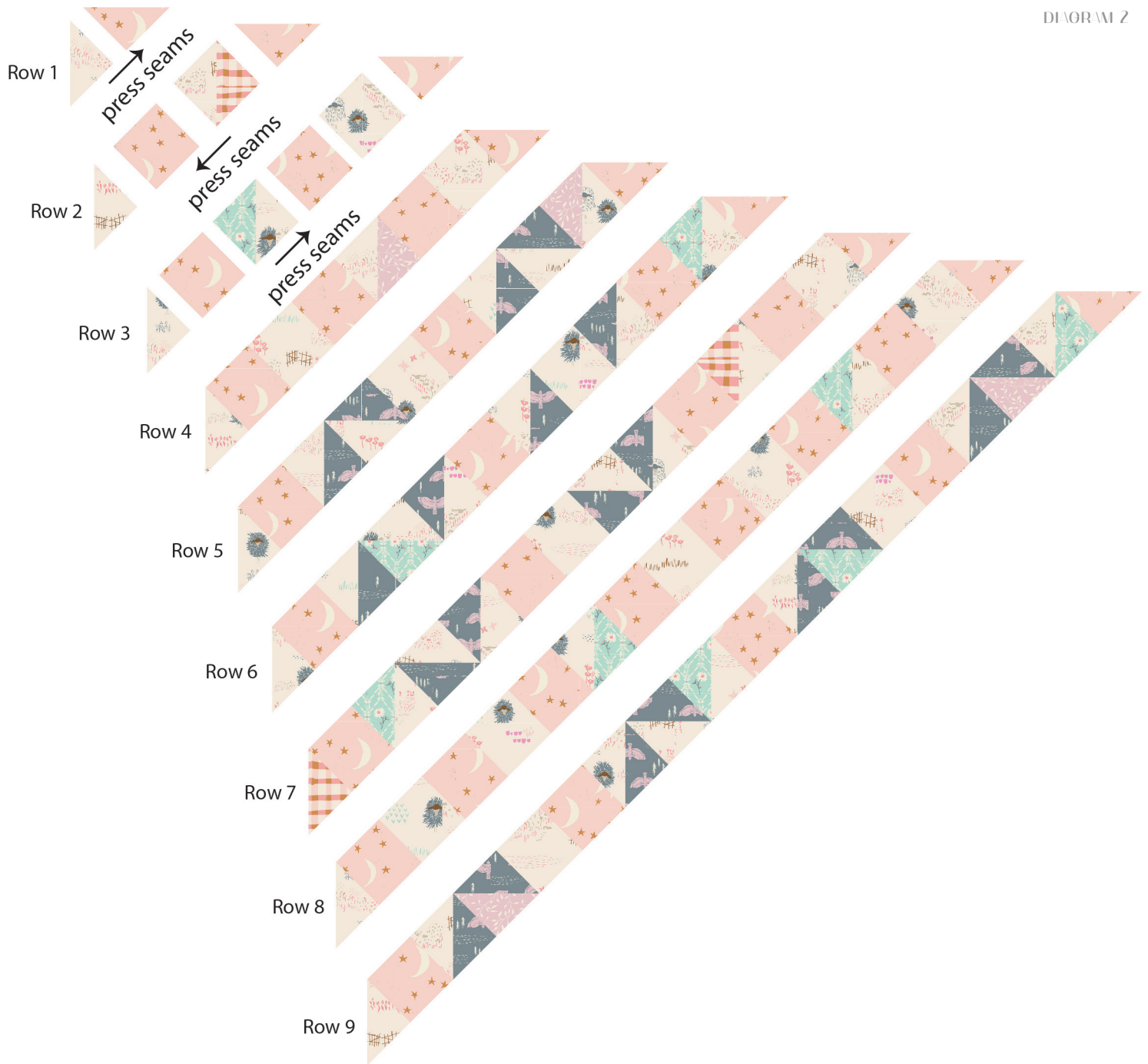
B triangle > A triangle

- Press the seam allowances to the right for all odd numbered rows and to the left for all even numbered rows so that seams nest when rows are sewn to each other.
- Sew rows together, alternating start points each seam to prevent fabric skewing.



## On Point Quilt Top Assembly

DIAGRAM 2

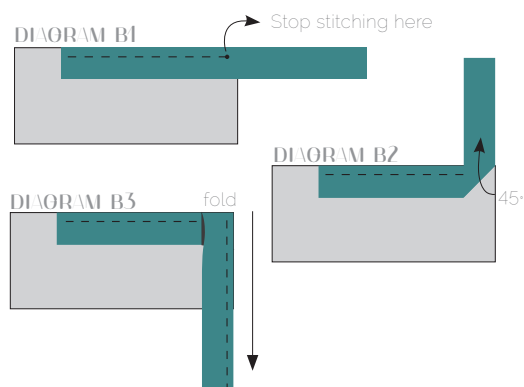


- Continue assembly in the same manner for rows 10- 23, referring to the assembly directions and cover illustration for block placement.
- Rows 11 & 12 end in the top right corner of quilt. Rows 12 & 13 begin as the bottom left corner of the quilt. Refer to the cover illustration to check corner piece, and HST orientation.

## QUILT ASSEMBLY

- © Place BACKING FABRIC on a large surface wrong side up. Stretch it with masking tape against that surface.
- © Place BATTING on top of backing fabric.
- © Place TOP on top of the batting with right side facing up. Smooth away wrinkles using your hands.
- © Pin all layers together and baste with basting thread, using long stitches. You can also use safety pins to join the layers.
- © Machine or hand quilt starting at the center and working towards the corners. Remember that quilting motifs are a matter of personal preference. Have fun choosing yours!
- © After you finished, trim excess of any fabric or batting, squaring the quilt to proceed to bind it.

- © Stop stitching before you reach the last 5 or 6 inches. Cut the threads and remove the quilt from under the machine presser foot. Lay the loose ends of the binding flat along the quilt edge, folding the ends back on themselves where they meet. Press them together to form a crease. Using this crease as the stitching line, sew the two open ends of the binding with right sides together (you can help yourself marking with a pencil if the crease is difficult to see).
- © Trim seam to  $\frac{1}{4}$ " and press open. Complete the sewing. Turn binding to back of the quilt, turn raw edge inside and stitch by hand using blind stitch.



## BINDING

*Sew rights sides together.*

- Cut seven strips  $1\frac{1}{2}$ " wide by the width of the fabric to make a final strip 270" long. Start sewing the binding strip in the middle of one of the sides of the quilt, placing the strip right side down and leaving an approximated 5" tail. Sew with  $\frac{1}{4}$ " seam allowance (using straight stitch), aligning the strip's raw edge with the quilt top's raw edge.
- Stop stitching  $\frac{1}{4}$ " before the edge of the quilt (**DIAGRAM B 1**). Clip the threads. Remove the quilt from under the machine presser foot. Fold the strip in a motion of 45° and upward, pressing with your fingers (**DIAGRAM B2**). Hold this fold with your finger, bring the strip down in line with the next edge, making a horizontal fold that aligns with the top edge of the quilt (**DIAGRAM B3**). Start sewing at  $\frac{1}{4}$ " of the border, stitching all the layers. Do the same in the four corners of the quilt..



[artgalleryfabrics.com](http://artgalleryfabrics.com)

*NOTE: While all possible care has been taken to ensure the accuracy of this pattern, We are not responsible for printing errors or the way in which individual work varies. Please read instructions carefully before starting the construction of this quilt. If desired, wash and iron your fabrics before starting to cut.*