

X  
X  
X  
X  
X  
X  
X  
X  
X  
X  
X  
X



follow me



XXXXXXXXXXXXXXXXXXXXXXXXXXXX

# ANGLES

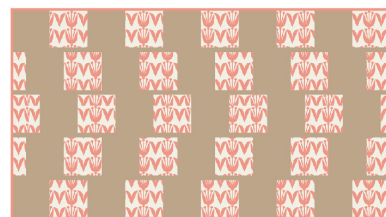
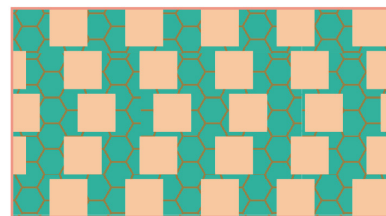
A DIVISION OF AGF



# follow me



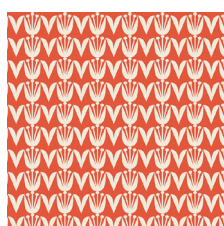
FABRICS DESIGNED BY DANA WILLARD



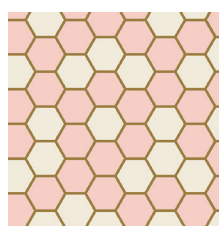
SUMMER



BSH-78400  
DUTCH BLOOM SUMMER



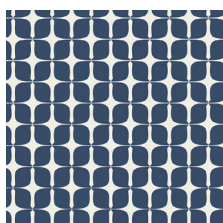
BSH-78401  
TULIPS COPPER



BSH-78402  
HEX ROSE



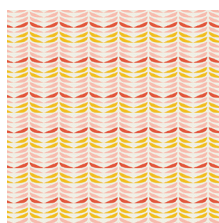
BSH-78403  
FLORET BRIGHT



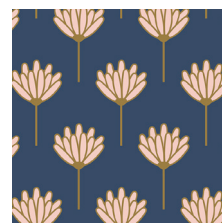
BSH-78405  
MOD PAPER INDIGO



BSH-78406  
CAT NAP PINK



BSH-78407  
RETRO PETALS POWDER

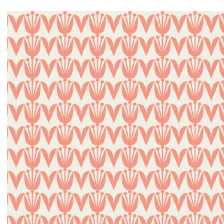


BSH-78408  
FLORET SUNKISSED

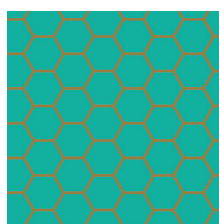
SPRING



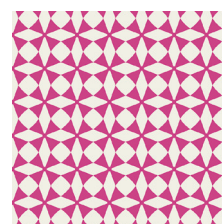
BSH-88400  
DUTCH BLOOM SPRING



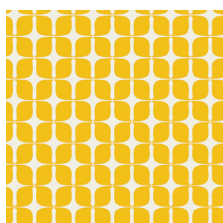
BSH-88401  
TULIPS PEACH



BSH-88402  
HEX TEAL



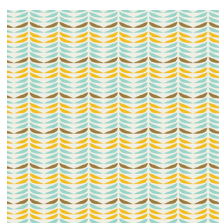
BSH-88404  
WINDMILL MAGENTA



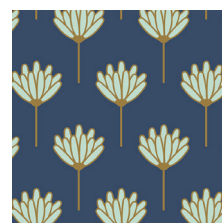
BSH-88405  
MOD PAPER CITRUS



BSH-88406  
CAT NAP MINT



BSH-88408  
RETRO PETAL MIST



BSH-88409  
FLORET HONEYDEW



FEEL THE DIFFERENCE © 2017 Courtesy of Art Gallery Quilts LLC. All Rights Reserved.



FINISHED SIZE | 20" x 11"

## FABRIC REQUIREMENTS

Fabric <b>A</b>	BSH-88402	1/3 yd.
Fabric <b>B</b>	BSH-88401	1/3 yd.
Fabric <b>C</b>	PE-450	1/4 yd.
Fabric <b>D</b>	PE-445	1/4 yd.

### BACKING FABRIC

Fabric **A** and **B** FQ. (*Suggested*)

### BINDING FABRIC

PE-450 (Fabric **C**) (*Included*)

## CUTTING DIRECTIONS

1/4" seam allowances are included.  
WOF means width of fabric.

- Twenty five (25) 2 1/2" x 2 1/2" squares from fabrics **A** and **D**.
- Twenty two (22) 2 1/2" x 2 1/2" squares from fabrics **B** and **C**.
- One (1) 2" x 2 1/2" rectangles from fabrics **B** and **C**.
- Two (2) 1 3/4" x 2 1/2" rectangles from fabrics **B** and **C**.
- Two (2) 1 1/4" x 2 1/2" rectangles from fabrics **B** and **C**.
- One (1) 1 x 2 1/2" rectangles from fabrics **B** and **C**.
- Four (4) 20 1/2" x 3/4" strips from fabrics **A** and **D**.

## CONSTRUCTION

*Sew all rights sides together with 1/4" seam allowance.*

- Place-mat 1 is made of fabric **A** and **C**.
- Place-mat 2 is made of fabric **B** and **D**.
- Join the pieces following Diagram 1.

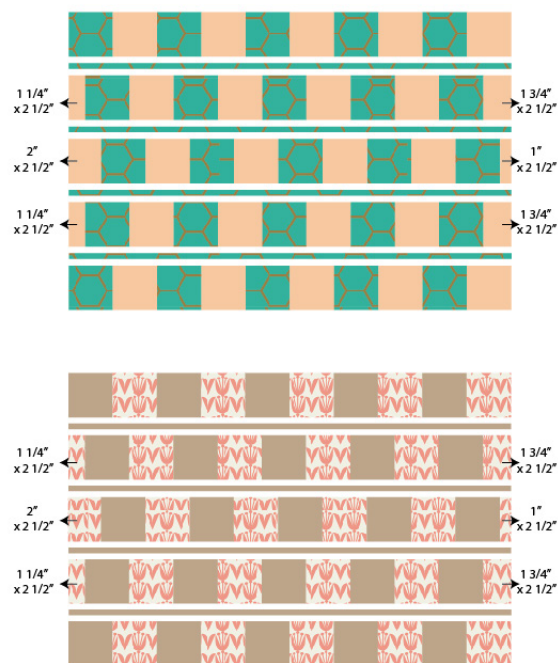


DIAGRAM 1

## QUILT ASSEMBLY

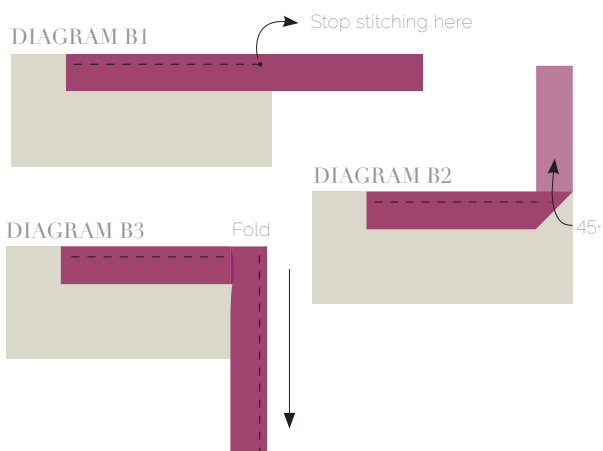
*Sew right sides together.*

- Place BACKING FABRIC on a large surface wrong side up. Stretch it with masking tape against that surface.
- Place BATTING on top of backing fabric.
- Place TOP on top of the batting with right side facing up. Smooth away wrinkles using your hands..
- Pin all layers together and baste with basting thread, using long stitches. You can also use safety pins to join the layers.
- Machine or hand quilt starting at the center and working towards the corners. Remember that quilting motifs are a matter of personal preference. Have fun choosing yours!
- After you finished, trim excess of any fabric or batting, squaring the quilt to proceed to bind it.

## BINDING

*Sew rights sides together.*

- Cut enough strips  $1\frac{1}{2}$ ' wide by the width of the fabric **C** to make a final strip 140' long. Start sewing the binding strip in the middle of one of the sides of the quilt, placing the strip right side down and leaving an approximated 5' tail. Sew with  $\frac{1}{4}$ ' seam allowance (using straight stitch), aligning the strip's raw edge with the quilt top's raw edge.
- Stop stitching  $\frac{1}{4}$ ' before the edge of the quilt (**DIAGRAM B1**). Clip the threads. Remove the quilt from under the machine presser foot. Fold the strip in a motion of  $45^\circ$  and upward, pressing with your fingers (**DIAGRAM B2**). Hold this fold with your finger, bring the strip down in line with the next edge, making a horizontal fold that aligns with the top edge of the quilt (**DIAGRAM B3**). Start sewing at  $\frac{1}{4}$ ' of the border, stitching all the layers. Do the same in the four corners of the quilt.
- Stop stitching before you reach the last 5 or 6 inches. Cut the threads and remove the quilt from under the machine presser foot. Lay the loose ends of the binding flat along the quilt edge, folding the ends back on themselves where they meet. Press them together to form a crease. Using this crease as the stitching line, sew the two open ends of the binding with right sides together (you can help yourself marking with a pencil if the crease is difficult to see).
- Trim seam to  $\frac{1}{4}$ ' and press open. Complete the sewing. Turn binding to back of the quilt, turn raw edge inside and stitch by hand using blind stitch.



[artgalleryfabrics.com](http://artgalleryfabrics.com)

*NOTE: While all possible care has been taken to ensure the accuracy of this pattern, We are not responsible for printing errors or the way in which individual work varies. Please read instructions carefully before starting the construction of this quilt. If desired, wash and iron your fabrics before starting to cut.*