

X  
X  
X  
X  
X  
X  
X  
X  
X  
X  
X  
X  
X  
X  
X

# CARAWAY



by AGF

XXXXXXXXXXXXXXXXXXXXXXXXXXXX



# CARAWAY

QUILT DESIGNED BY AGF STUDIO *AGFstudio*

Spices FUSION

FABRICS DESIGNED BY AGF STUDIO



**FUS-S-700**  
WILLOW BLOOMS SPICES



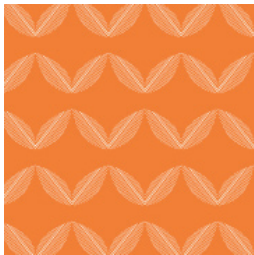
**FUS-S-701**  
PLOTTED FARM SPICES



**FUS-S-702**  
THRIVE SPICES



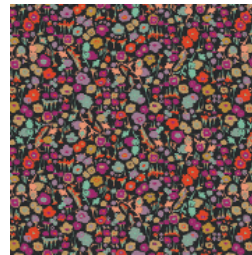
**FUS-S-703**  
OP ART SPICES



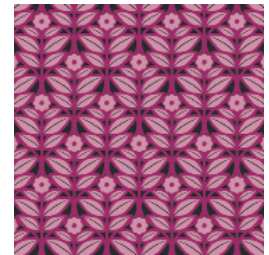
**FUS-S-704**  
JOY PLANTE SPICES



**FUS-S-705**  
BLOSSOM SWALE SPICES



**FUS-S-706**  
PRETTY DITSY SPICES



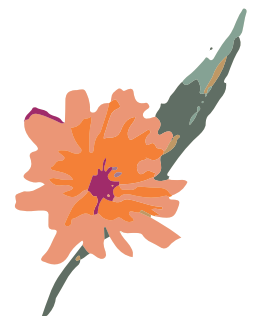
**FUS-S-707**  
IMPRESSIONS SPICES



**FUS-S-708**  
PAPAROUNES SPICES



**FUS-S-709**  
PLUMAGE SPICES



# CARAWAY

FINISHED SIZE | 54" x 75"

## FABRIC REQUIREMENTS

Fabric <b>A</b>	FUS-S-700	¼ yd.
Fabric <b>B</b>	FUS-S-701	1 ⅞ yd.
Fabric <b>C</b>	FUS-S-702	¾ yd.
Fabric <b>D</b>	FUS-S-703	⅝ yd.
Fabric <b>E</b>	FUS-S-704	½ yd.
Fabric <b>F</b>	FUS-S-707	¾ yd.
Fabric <b>G</b>	FUS-S-708	⅝ yd.
Fabric <b>H</b>	FUS-S-709	¾ yd.
Fabric <b>I</b>	DEN-S-2000	1 ½ yd.
Fabric <b>J</b>	DEN-S-2006	1 ⅞ yd.

### BINDING FABRIC

FUS-S-701 Fabric **H** *(included)*

### BACKING FABRIC

FUS-S-700 3 ½ yds. *(suggested)*

## CUTTING DIRECTIONS

¼" seam allowances are included.  
WOF means width of fabric.

- Fabric **A**
  - One (1) 11 ¼" x 5 ⅝" rectangle
  - One (1) 5 ¼" square
  - Four (4) 2 ⅞" squares
  - Two (2) 2 ½" x 18 ½" strips
- Fabric **B**
  - One (1) 11 ¼" square
  - Thirty (30) 2 ⅞" squares
  - One (1) 6" x 36 ½" strip
  - Two (2) 2 ½" x 18 ½" strips
  - Three (3) 7 ¼" squares
- Fabric **C**
  - One (1) 11 ¼" square
  - One (1) 5 ⅞" square
- Fabric **D**
  - One (1) 11 ¼" square
  - Two (2) 6 ½" x 9 ½" rectangles
  - Eight (8) 5 ⅞" squares
- Fabric **E**
  - One (1) 11 ¼" square
  - One (1) 5 ⅞" square

XX

- One (1) 2 ½" x 36 ½" strip
- One (1) 2 ½" x 18 ½" strip
- Fabric **F**
  - One (1) 11 ¼" square
  - One (1) 5 ⅞" square
  - Two (2) 2 ⅞" squares
  - One (1) 2 ½" x 18 ½" strip
- Fabric **G**
  - 1 (1) 19" square
  - One (1) 5 ⅞" square
  - Two (2) 2 ½" x 18 ½" strips
- Fabric **H**
  - Four (4) 5 ⅞" squares
  - One (1) 2 ½" x 36 ½" strip
  - Two (2) 1 ½" x 10 ½" strips
  - One (1) 1 ½" x 40 ½" strip
- Fabric **I**
  - Three (3) 11 ¼" squares
  - Eight (8) 5 ⅞" squares
  - Three (3) 5 ¼" squares
  - Thirty (30) 2 ⅞" squares
  - Three (3) 3 ⅞" squares
  - One (1) 4 ½" x 75 ½" strip (from 2 WOF strips)
  - One (1) 6" x 36 ½" strip
  - One (1) 2 ½" x 18 ½" strip
- Fabric **J**
  - Eight (8) 5 ⅞" squares
  - One (1) 4 ½" x 75 ½" strip
  - One (1) 23" square

## CONSTRUCTION

Sew all rights sides together with ¼" seam allowance.

### 5" x 10" Flying Geese Units, Traditional Construction

- Take all your 11 ¼" squares and cut on the diagonal twice to get four large center triangle units per square.
- Cut 5 ⅞" squares on the diagonal to make two side triangle pieces. Cut:
  - Four (4) Fabric H Squares
  - Eight (8) Fabric D, I & J Squares

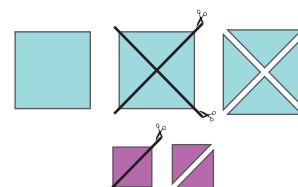


DIAGRAM 1a

- Place the side triangles on the corners of the large triangle, right sides together, lining up the bottom and side corner so that there is a little overhang on the top of the triangle and sew. Do the same for the other side. Press the unit open and then trim and square to 5 ½" x 10 ½" if needed. (see diagram 1b)

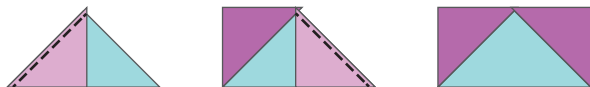
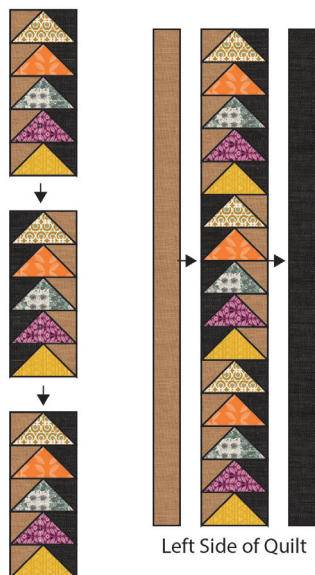


DIAGRAM 1b

### Left Column of Flying Geese Units

- First Set: Take two large center triangles from each of the following Fabrics: B, C, D, E, F. Sew left side triangle in Fabric J and right side triangle in Fabric I. Set aside.
- Second Set: Take one large center triangle from each of the following Fabrics: B, C, D, E, F. This time sew left side triangle in Fabric I and right side triangle in Fabric J.
- Sew three mini-columns. Make two from the first set of geese in the fabric order (according to center triangle): D > E > C > F > B
- Sew the geese from the second set in the same order.
- Sew the mini-columns together: Set 1 > Set 2 > Set 1.
- Finish the Left Side of the Quilt top by sewing a  $4\frac{1}{2}'' \times 75\frac{1}{2}''$  strip of Fabric J to the left side of the Flying Geese Column. Sew the  $4\frac{1}{2}'' \times 75\frac{1}{2}''$  strip of Fabric I to the right side of the Flying Geese Column. Press and set aside.



Left Side of Quilt

DIAGRAM 2

### Top Center Block of Flying Geese

- Follow the instructions for making  $5'' \times 10''$  Flying Geese units using triangle pieces already cut.
- Take six large center triangles from Fabric I.
- Sew Fabric D side triangles on them.
- Take one large center triangle from Fabric E and sew Fabric D side triangles on it.
- Take your Fabric A rectangle ( $11\frac{1}{4}'' \times 5\frac{5}{8}''$ ) and sew Fabric D side triangles on it by lining up the bottom and side corners, sewing  $\frac{1}{4}''$  from the edge of the side triangle and trimming off the excess fabric A at  $\frac{1}{4}''$  seam allowance to complete one Fabric A/ Fabric D Goose block.
- Turn geese on their side and sew the geese together into two rows, then sew those two rows together to make a block. Some geese are flipped, so refer to the diagram below carefully as you pin and sew.

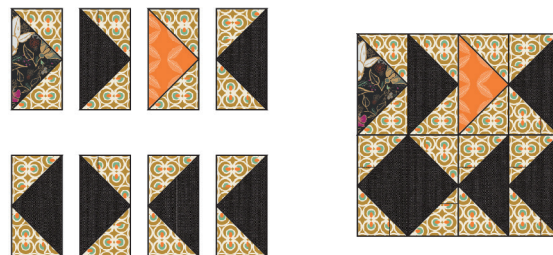


DIAGRAM 3

### Top Right Block

#### $2'' \times 4''$ (Finished) Flying Geese Units

- Cut the following  $5\frac{1}{4}''$  squares on both diagonals:
  - Three (3) Fabric I
  - One (1) Fabric A
- Cut the following  $2\frac{7}{8}''$  squares on the diagonal:
  - Six (6) Fabric B
  - Four (4) Fabric A
  - Four (4) Fabric I
  - Two (2) Fabric F
- Sew the small side triangles onto the large center triangles in the same way you did for the larger flying geese. (Diagram 1)
- Make six (6) with Fabric I center, Fabric B sides
- Make four (4) with Fabric A center, Fabric I sides
- Make four (4) with Fabric I center, Fabric A sides
- Make two (2) with Fabric I center, Fabric F sides
- Set aside Fabric A/I & I/A geese.



- Sew the geese together in the following order and orientation (see diagram 4).



DIAGRAM 4

## Making Half Square Triangles (HST)

## Two at a time Method

- First, layer your two squares of fabric, right sides together and mark the diagonal with a quilting marker.
- Sew on either side of the mark at  $\frac{1}{4}$ ".
- Press to set stitches, then cut on the marked center line and press HST units open. (see diagram 5.)

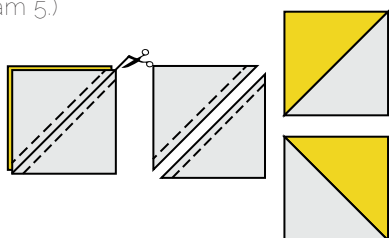
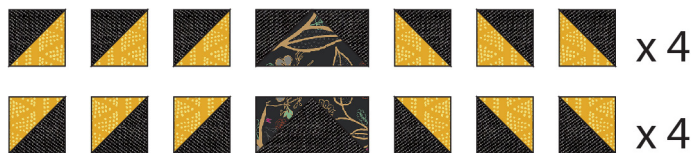


DIAGRAM 5

### Top Right Block, Continued

- The Top Right Block uses 2" (Finished) HST units. Take twenty-four (24) 2 7/8" squares in Fabrics B and I and make HST units as explained. You will make 48 HST units.



### DIAGRAM 6

- Sew three HST to both sides of the Fabric A/I & I/A geese to make eight rows. Then sew HST and Geese rows together as shown below to finish block.



DIAGRAM 7



### Top Right Strip Block

- Sew the following strips together to make the block:
  - (5 ½" x 36 ½") Fabric B
  - (2 ½" x 36 ½") Fabric E
  - (2 ½" x 36 ½") Fabric H
  - (6" x 36 ½") Fabric I

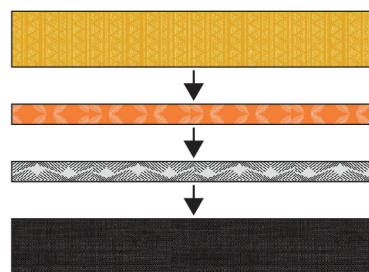


DIAGRAM 8

### Center Block of Flying Geese

- Follow the instructions for making 5" x 10" Flying Geese units using triangle pieces already cut.
- Take four (4) large center triangles from Fabric I.
- Sew Fabric H side triangles on them.
- Sew the Flying Geese units into a column and sew 1 ½" x 10 ½" Fabric H strips to the top and bottom. See diagram 9.



DIAGRAM 9

## Circle Block

- First, draft your pattern pieces:
- Cut a piece of paper 20" wide x 22" high.
- Draw a quarter circle with an 18" radius on the upper left corner of the paper. Make a DIY compass to do so by tying a piece of string that measures 18" to a pencil and pinning to the corner. You can also use a ruler to draw the circle.
- Make a mark across the center of the circle line on both pieces so that you have a center notch to match up when pinning later.
- After drawing the circle cut apart your pattern pieces. Now, trace onto another sheet of paper and add  $\frac{1}{4}$ " seam allowance all around both pieces. (see diagram 10)
- Cut the quarter circle out of Fabric G 19" square and cut the outside part out of Fabric J 23" square.

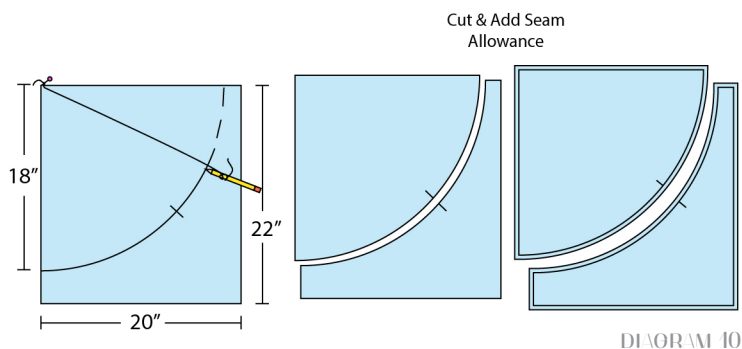


DIAGRAM 10

## Circle Block, Continued

- Pin the outside circle piece to the quarter circle piece, right sides together, making sure to match ends and center notch.
- Sew, press to set stitches, clip curves and press open.

## Bottom Strip Block

- Gather your 2 ½' x 18 ½' strips and sew them in the following order:

Fabric A > G > E > B > A > I > F > B > G



DIAGRAM 11

## Bottom Right Block

- Cut three (3) 7 ¼' Fabric B squares and on both diagonals.
- Cut six (6) 3 7/8' Fabric I squares on the diagonal.
- Sew six (6) flying geese and sew together in sets of three.
- Sew a 6 ½' x 9 ½' Fabric D block to the left side of each geese block.
- Flip one block upside down and sew them together one atop the other. (See Diagram 12.)



DIAGRAM 12

## Bottom Right HST Tower

- Take four (4) 5 7/8' Fabric I squares and pair with one (1) 5 7/8' square each of Fabric E, C, F, and G.
- Make HST according to two at a time method to make a total of eight HST.
- Sew together into one column: I/E > I/E > I/C > I/C > I/F > I/F > I/G > I/G. (see diagram)



DIAGRAM 13

## Quilt Top Assembly

### Bottom Right

- Sew the 'Center Block of Flying Geese' to the 'Circle Block' and sew the 'Bottom Strip Block' to the 'Bottom Right Block'. Sew the two rows together. See Diagram 14.

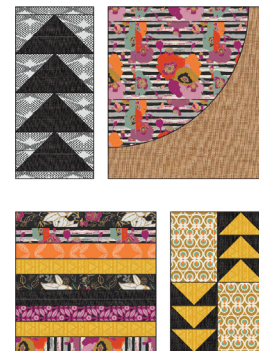


DIAGRAM 14



DIAGRAM 15

- Sew the 1 ½' x 40 ½' Fabric H strip to the left side of the bottom block and sew the Bottom Right HST Tower to the right side of the block to complete the bottom right portion of the quilt top.

### Top Right

- Sew the 'Top Center Block of Flying Geese' to the 'Top Right Block' and then sew them to the 'Top Right Strip Block' to complete the Top right portion of the quilt top. (see diagram)



## Top Right Portion

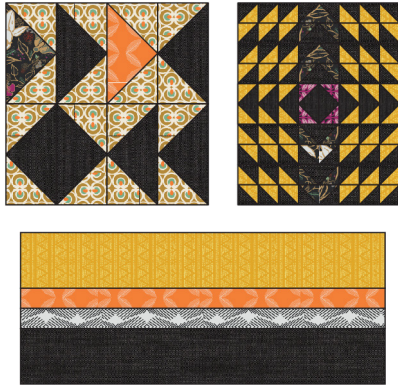


DIAGRAM 16

### Quilt Top Assembly

- Sew the Top Right portion to the Bottom Right portion and then sew the Left and Right sides of the quilt together. Refer to the cover illustration.



## QUILT ASSEMBLY

*Sew rights sides together.*

- © Place BACKING FABRIC on a large surface wrong side up. Stretch it with masking tape against that surface.
- © Place BATTING on top of backing fabric.
- © Place TOP on top of the batting with right side facing up. Smooth away wrinkles using your hands.
- © Pin all layers together and baste with basting thread, using long stitches. You can also use safety pins to join the layers.
- © Machine or hand quilt starting at the center and working towards the corners. Remember that quilting motifs are a matter of personal preference. Have fun choosing yours!
- © After you finished, trim excess of any fabric or batting, squaring the quilt to proceed to bind it.

### Quilt Top Assembly

- We chose to complement the eclectic quality of the quilt by using various hand quilting and decorative stitches using a thicker thread like a sashiko thread or embroidery floss.
- We also added decorative trim at this point, like mini pom-pom trim in green and orange and a gold ribbon trim.
- We also added some decorative buttons on the circle block for fun.



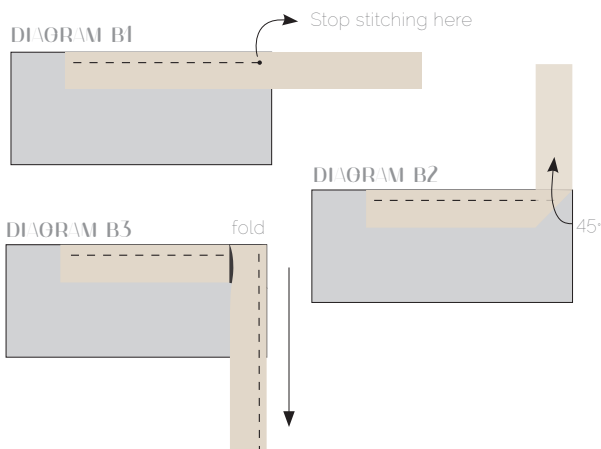
Have fun with your stitches!





## BINDING

*Sew rights sides together.*



- Cut seven strips  $1\frac{1}{2}$ ' wide by the width of the fabric **H** to make a final strip 268' long. Start sewing the binding strip in the middle of one of the sides of the quilt, placing the strip right side down and leaving an approximated 5' tail. Sew with  $\frac{1}{4}$ ' seam allowance (using straight stitch), aligning the strip's raw edge with the quilt top's raw edge.

© Stop stitching  $\frac{1}{4}$ ' before the edge of the quilt (**DIAGRAM B1**). Clip the threads. Remove the quilt from under the machine presser foot. Fold the strip in a motion of  $45^\circ$  and upward, pressing with your fingers (**DIAGRAM B2**). Hold this fold with your finger, bring the strip down in line with the next edge, making a horizontal fold that aligns with the top edge of the quilt (**DIAGRAM B3**). Start sewing at  $\frac{1}{4}$ ' of the border, stitching all the layers. Do the same in the four corners of the quilt.

© Stop stitching before you reach the last 5 or 6 inches. Cut the threads and remove the quilt from under the machine presser foot. Lay the loose ends of the binding flat along the quilt edge, folding the ends back on themselves where they meet. Press them together to form a crease. Using this crease as the stitching line, sew the two open ends of the binding with right sides together (you can help yourself marking with a pencil if the crease is difficult to see).

© Trim seam to  $\frac{1}{4}$ ' and press open. Complete the sewing. Turn binding to back of the quilt, turn raw edge inside and stitch by hand using blind stitch.



FEEL THE DIFFERENCE

[artgalleryfabrics.com](http://artgalleryfabrics.com)

*NOTE: While all possible care has been taken to ensure the accuracy of this pattern, We are not responsible for printing errors or the way in which individual work varies. Please read instructions carefully before starting the construction of this quilt. If desired, wash and iron your fabrics before starting to cut.*

©2017 Courtesy of Art Gallery Quilts LLC. All Rights Reserved.