

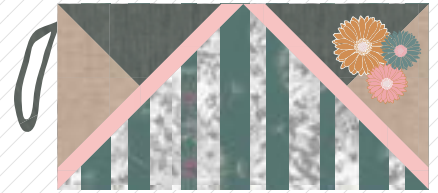
A decorative arrangement featuring a green plant in a white lace pot, a quilted pillow with a green and white pattern and pink trim, and a large, textured, cylindrical object (possibly a hat or a container) in the foreground.

FREE PATTERN

XXXXXXXXXXXXXXXXXXXXXXXXXXXX

Sabrina

AGFstudio

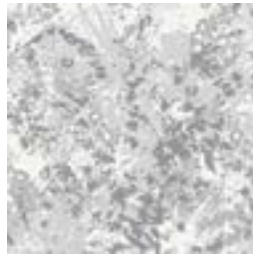


Bachelorette FUSION

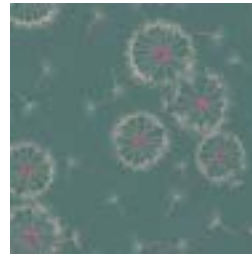
FABRICS DESIGNED BY AGF STUDIO



FUS-BC-500
GARDEN ROCKET BACHELORETTE



FUS-BC-501
REBEL BRUSHSTROKES BACHELORETTE



FUS-BC-502
TINY DANCER BACHELORETTE



FUS-W-603
ALL PATHS BACHELORETTE



FUS-BC-504
FIREFLY BACHELORETTE



FUS-BC-505
TREKANT ROWS BACHELORETTE



FUS-BC-506
PANACHE BACHELORETTE



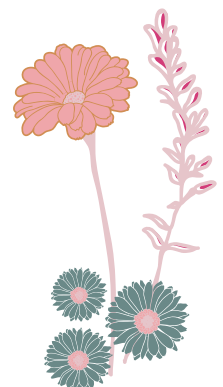
FUS-BC-507
FLOWER FIELD BACHELORETTE



FUS-BC-508
MUDCLOTH BACHELORETTE



FUS-BC-509
DRIPPING PAINT BACHELORETTE



FEEL THE DIFFERENCE © 2017 Courtesy of Art Gallery Quilts LLC. All Rights Reserved.

FABRIC REQUIREMENTS

Fabric A	FUS-BC- 501	1/8 yd.
Fabric B	FUS-BC- 502	1/8 yd.
Fabric C	DEN-L-4000	1/6 yd.
Fabric D	DEN-S-2002	1/6 yd.
Fabric E	PE-420	1/4 yd.
Fabric F	FUS-BC- 507	swatch

LINING Fabric

Fabric **E** PE-420 (Included)

Additional Materials

- 12" Zipper
- Fusible Fleece

CUTTING DIRECTIONS

*1/4" seam allowances are included.
WOF means width of fabric.*

- Six (6) strips of 1 1/8" x 6 1/2" from Fabric **A**
- Six (6) strips of 1" x 6 1/2" from Fabric **A**
- Four (4) of 1 1/2" x 6 1/2" from Fabric **A**
- Six (6) strips of 1 1/2" x 6 1/2" from Fabric **B**
- Six (6) strips of 1 1/8" x 6 1/2" from Fabric **B**
- Four (4) strips of 1" x 6 1/2" from Fabric **B**
- Two (2) perfect square of 4 2/3" from Fabric **C**
- Two (2) perfect square of 4 2/3" from Fabric **D**
- Four (4) strips of 1" x 9 1/8" from Fabric **E**
- One (1) strips of 2"x 15" from Fabric **D** (strap)
- Two (2) rectangles of 12 1/2"x 6 1/2" from Fabric **E** (lining)

CONSTRUCTION

Sew all rights sides together with 1/4" seam allowance.

- Start by pairing Fabric **A** and **B** strips in the following order:
- Fabric **A** 1 1/8" x 6 1/2" strip with Fabric **B** 1 1/2" x 6 1/2"
- Fabric **A** 1" x 6 1/2" strip with Fabric **B** 1 1/8" x 6 1/2"
- Fabric **A** 1 1/2" x 6 1/2" strip with Fabric **B** 1" x 6 1/2"
- Fabric **A** 1 1/8" x 6 1/2" strip with Fabric **B** 1 1/2" x 6 1/2"
- Fabric **A** 1" x 6 1/2" strip with Fabric **B** 1 1/8" x 6 1/2"
- Fabric **A** 1 1/8" x 6 1/2" strip with Fabric **B** 1 1/2" x 6 1/2"
- Fabric **A** 1 1/2" x 6 1/2" strip with Fabric **B** 1" x 6 1/2"
- Fabric **A** 1" x 6 1/2" strip with Fabric **B** 1 1/8" x 6 1/2"

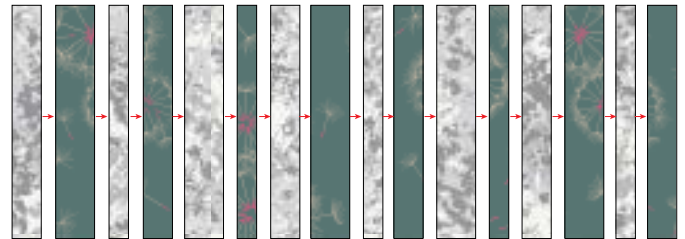


DIAGRAM 1

- Repeat same process for the back side of the clutch
- Now, take the perfect squares from Fabric **C, D** and draw a diagonal line in the middle of the top square.
- Now sub-cut directly on the drawn line.



DIAGRAM 2

- Now, take each half square pieces from Fabric **C, D** and rotate them so you have the top points meeting as diagram below and sew.

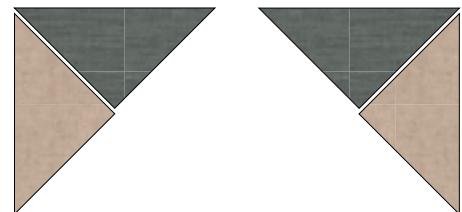


DIAGRAM 3

- Now take the two Fabric **E** strips and pair them with the fabric **C, D** pieces on the diagonal and sew.

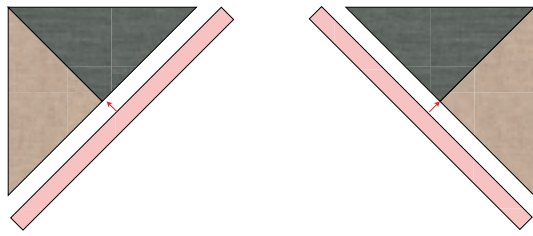


DIAGRAM 4

- Repeat same steps for the pack side of the clutch.
- Now you will need to pair the rectangle strip pieces with the corner pieces already assembled.
- Place the left side, right sides facing and sew.
- Trim the excess fabric
- Repeat same process for the right side and the two back sides of the clutch.

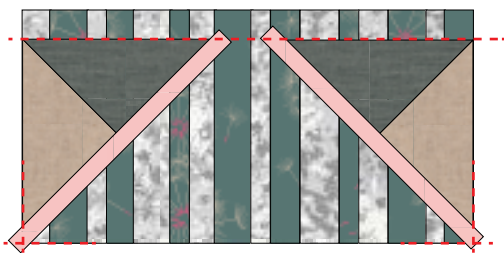


DIAGRAM 5

- Repeat same steps for the pack side of the clutch.
- Quilt as desired
- Then, from Fabric **F** choose any desired flower print and cut and add the applique pieces on your clutch.
- In this clutch, the flowers were sewn with decorative stitches

Zipper Construction

Insert your zipper foot-

- Take lining and front clutch and sandwich them inbetween your 12" zipper.
- Using a zipper foot sew as close to the zipper teeth as possible.

XX

- Sew the two pieces of fabric with right sides together with the zipper sandwiched inbetween the two pieces of fabric (Diagram 6.1 and 6.2)
- Press fabric away from zipper and edge stitch the seam allowance to the lining sewing as close the edge as possible..
- Repeat process for the other side of the zipper using your other lining piece and back clutch.

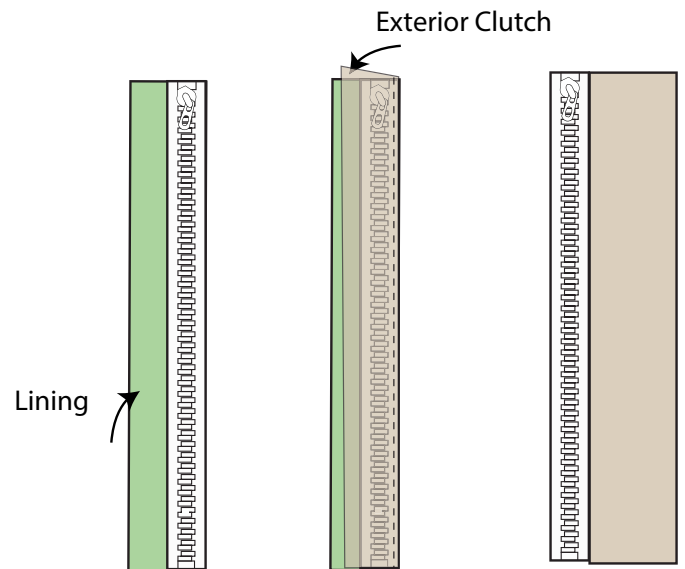


DIAGRAM 6.1

DIAGRAM 6.2

DIAGRAM 6.3

- Unzip zipper. Take the two fronts of the clutch and pin right sides together.
- Take the lining pieces and pin right sides together.
- Before you sew all the way around the bag, place the 2" x 15" strap from Fabric **D** on the edge and in between the front and back pieces.
- Now you can sew all the way around leaving a unsewn portion in the bottom of the lining of the clutch.
- Pull right side of the fabric through the unsewn portion. Hand stitch or machine stitch unsewn portion closed.
- Press and enjoy!!!



artgalleryfabrics.com

NOTE: While all possible care has been taken to ensure the accuracy of this pattern, We are not responsible for printing errors or the way in which individual work varies. Please read instructions carefully before starting the construction of this quilt. If desired, wash and iron your fabrics before starting to cut.

© 2017 Courtesy of Art Gallery Quilts LLC. All Rights Reserved.