



POSSIBILITIES



FUSIONS



by AGF

FREE PATTERN





POSSIBILITIES

QUILT DESIGNED BY AGF STUDIO *AGFstudio*

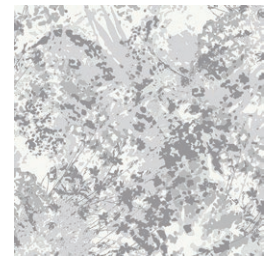


Bachelorette FUSION

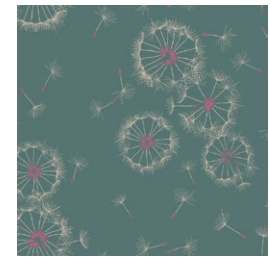
FABRICS DESIGNED BY AGF STUDIO



FUS-BC-500
GARDEN ROCKET BACHELORETTE



FUS-BC-501
REBEL BRUSHSTROKES BACHELORETTE



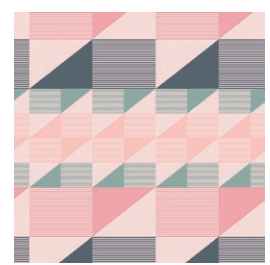
FUS-BC-502
TINY DANCER BACHELORETTE



FUS-W-603
ALL PATHS BACHELORETTE



FUS-BC-504
FIREFLY BACHELORETTE



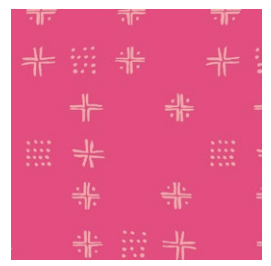
FUS-BC-505
TREKANT ROWS BACHELORETTE



FUS-BC-506
PANACHE BACHELORETTE



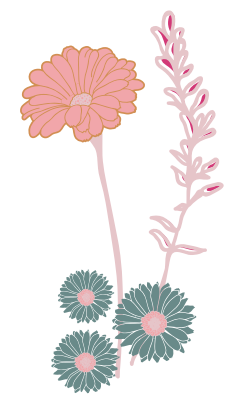
FUS-BC-507
FLOWER FIELD BACHELORETTE



FUS-BC-508
MUDCLOTH BACHELORETTE



FUS-BC-509
DRIPPING PAINT BACHELORETTE



POSSIBILITIES

FINISHED SIZE | 68" x 76"

FABRIC REQUIREMENTS

Fabric A	FUS-BC- 500	5/8 yd.
Fabric B	FUS-BC- 501	5/8 yd.
Fabric C	FUS-BC- 502	1 1/2 yds.
Fabric D	FUS-BC- 503	5/8 yd.
Fabric E	FUS-BC- 504	3 1/2 yds.
Fabric F	FUS-BC- 505	5/8 yd.
Fabric G	FUS-BC- 506	1/4 yd.
Fabric H	FUS-BC- 507	5/8 yd.
Fabric I	FUS-BC- 508	1/3 yd.
Fabric J	FUS-BC- 509	1 1/8 yds.

BINDING FABRIC

Fabric J -FUS-BC-509 (Included)

BACKING FABRIC

FUS-BC-500- 4 3/4 yds.

CUTTING DIRECTIONS

1/4" seam allowances are included.
WOF means width of fabric.

- Fourteen (14) 2 1/2" x 8 1/2" strip from Fabric A and B
- Twenty Eight (28) 2 1/2" x 6 1/2" strips from Fabric A and B
- Five (5) 4 1/2" square from Fabric C
- Seventeen (17) 2 1/2" x 8 1/2" strips from Fabric C
- Twenty Four (24) 2 1/2" x 6 1/2" strips from Fabric C
- Twenty Four (24) 2 1/2" x 4 1/2" strips from Fabric C
- Twenty Eight (28) 1 1/2" x 2 1/2" strips from Fabric C and E
- Twenty Eight (28) 1 1/2" x 6 1/2" strips from Fabric C and E

- Twelve (12) 2 1/2" x 8 1/2" strips from Fabric E
- Twelve (12) 2 1/2" x 4 1/2" strips from Fabric E
- Ninety Six (96) 3 1/2" squares from Fabric E
- Twenty Four (24) 2 1/2" x 12 1/2" strips from Fabric E
- Twenty Four (24) 2 1/2" x 16 1/2" strips from Fabric E
- Seventeen (17) 6 1/2" square from Fabric D
- Fourteen (14) 6 1/2" squares from Fabric F
- Fourteen (14) 2 1/2" x 4 1/2" strips from Fabric G
- Twelve (12) 4 1/2" x 6 1/2" rectangle from Fabric H
- Six (6) 2 1/2" x 8 1/2" strips from Fabric H
- Six (6) 2 1/2" x 4 1/2" strips from Fabric H
- Ten (10) 4 1/2" squares from Fabric I
- Seventeen (17) 6 1/2" squares from Fabric J

CONSTRUCTION

Sew all rights sides together with 1/4" seam allowance.

- Take your 3 1/2' squares from Fabric E and with a fabric marking pen draw a diagonal line from one end to the other or you can use your iron to create the diagonal mark.
- Place 3 1/2' squares on opposite corners right side down to a 6 1/2' square from Fabric D and sew on both diagonals.

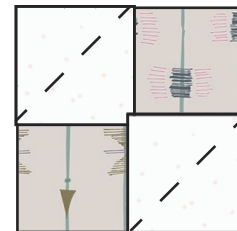


DIAGRAM 1

- Trim excess seam allowance to 1/4" and press.
- Repeat this process with all your 6 1/2" squares from Fabric D, F, and J and your 3 1/2" squares from Fabric E.

- Sew your corner square blocks together following the Block Diagram. Make five of Block A and B and two of Block C.
- Sew your 2 1/2' x 12 1/2' and 2 1/2' x 16 1/2' border strips around your blocks. (Diagram 2)

Block Diagram Five

Block A



Block B



Block C



Five

Five

Two

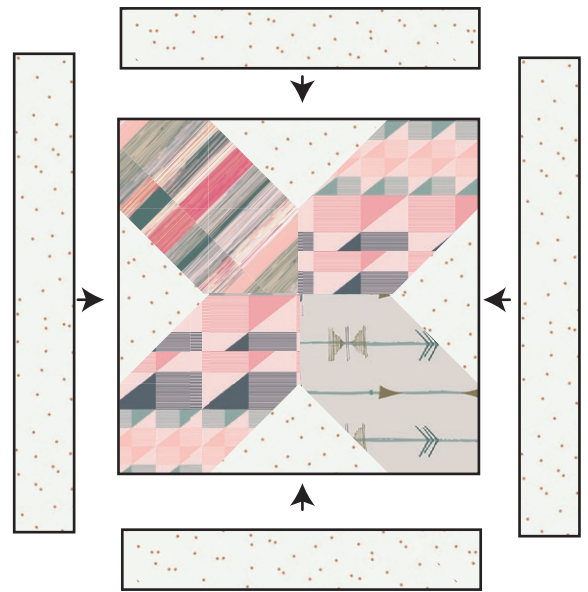
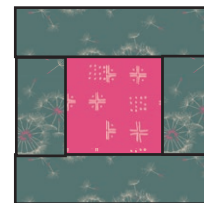


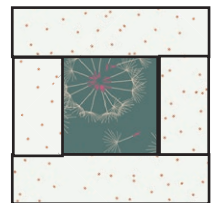
DIAGRAM 2

- To make your bordered square blocks take a 4 1/2' square from Fabric I and sew your 2 1/2' x 4 1/2' and 2 1/2' x 8 1/2' border strips to your square.
- Repeat this process with your remaining 4 1/2' squares from Fabric I and C and your border strips from Fabric C, E and H. (Diagram 3)

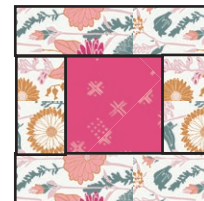
Five



Three



Three



Two

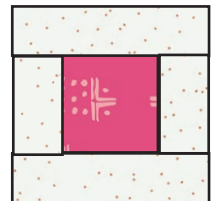


DIAGRAM 3

- To make your remaining units take a 2 1/2' x 4 1/2' rectangle from Fabric C and sew the 1 1/2' x 2 1/2' and 1 1/2' x 6 1/2' border strips from Fabric E. (Diagram 4)

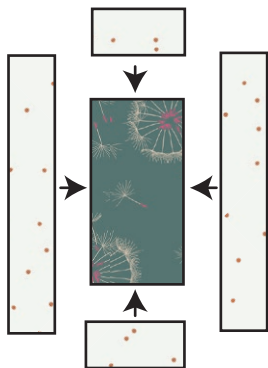


DIAGRAM 4

- Repeat this process with your remaining 2 1/2' x 4 1/2' rectangles from Fabric C and G and your border strips from Fabric E and C.
- Then sew a 2 1/2' x 6 1/2' strip to each side and a 2 1/2' x 2 1/2' x 8 1/2' strip on top to come your blocks. You should create fourteen of unit 1 and 2. (Diagram 5)

Unit 1



Unit 2



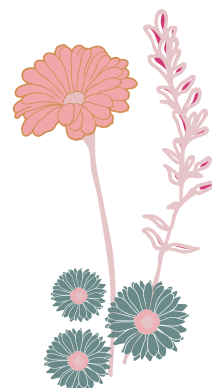
DIAGRAM 5

- Now take a 4 1/2' x 6 1/2' rectangle from Fabric H and sew the 2 1/2' x 6 1/2' and 2 1/2' x 8 1/2' border pieces to get a piece that looks like Diagram 6. (Make twelve of these blocks)

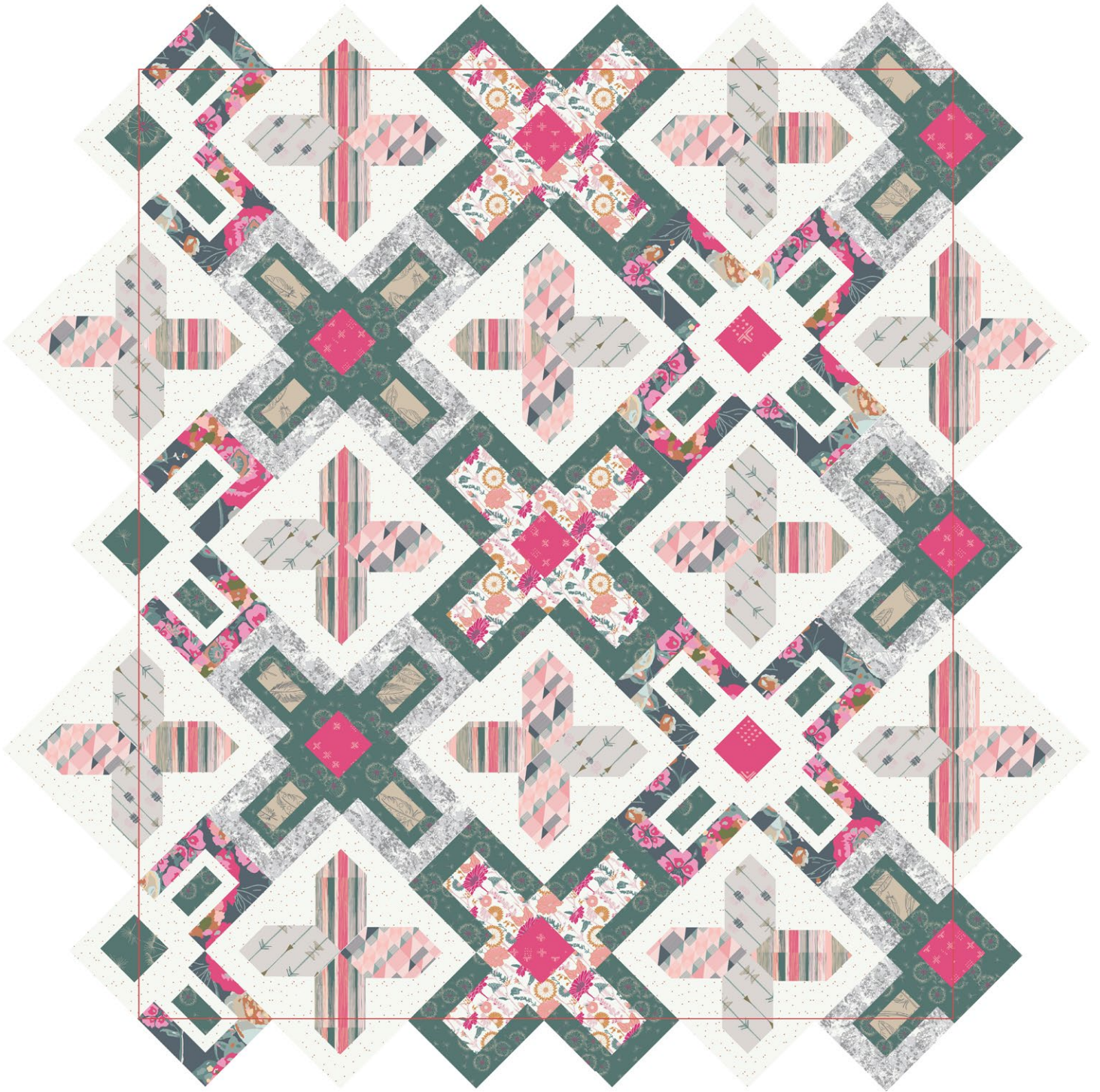


DIAGRAM 6

- Now it's time to assemble the quilt follow the Quilt Assembly Diagram and sew your rows together.



Quilt Assembly Diagram



QUILT ASSEMBLY

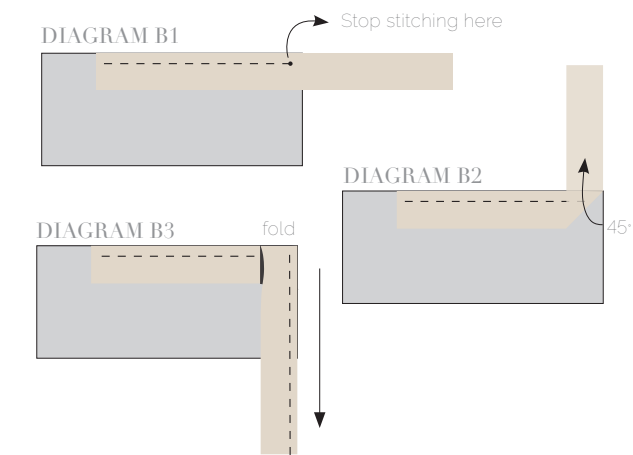
Sew rights sides together.

- Place BACKING FABRIC on a large surface wrong side up. Stretch it with masking tape against that surface.
- Place BATTING on top of backing fabric.
- Place TOP on top of the batting with right side facing up. Smooth away wrinkles using your hands.
- Pin all layers together and baste with basting thread, using long stitches. You can also use safety pins to join the layers.
- Machine or hand quilt starting at the center and working towards the corners. Remember that quilting motifs are a matter of personal preference. Have fun choosing yours!
- After you finished, trim excess of any fabric or batting, squaring the quilt to proceed to bind it.

BINDING

Sew rights sides together.

- Cut enough strips $1\frac{1}{2}$ ' wide by the width of the fabric **J** to make a final strip 298' long. Start sewing the binding strip in the middle of one of the sides of the quilt, placing the strip right side down and leaving an approximated 5' tail. Sew with $\frac{1}{4}$ ' seam allowance (using straight stitch), aligning the strip's raw edge with the quilt top's raw edge.
- Stop stitching $\frac{1}{4}$ ' before the edge of the quilt (**DIAGRAM B 1**). Clip the threads. Remove the quilt from under the machine presser foot. Fold the strip in a motion of 45° and upward, pressing with your fingers (**DIAGRAM B 2**). Hold this fold with your finger, bring the strip down in line with the next edge, making a horizontal fold that aligns with the top edge of the quilt (**DIAGRAM B 3**). Start sewing at $\frac{1}{4}$ ' of the border, stitching all the layers. Do the same in the four corners of the quilt.



artgalleryfabrics.com

NOTE: While all possible care has been taken to ensure the accuracy of this pattern, We are not responsible for printing errors or the way in which individual work varies. Please read instructions carefully before starting the construction of this quilt. If desired, wash and iron your fabrics before starting to cut.

© 2017 Courtesy of Art Gallery Quilts LLC. All Rights Reserved.