

X
X
X
X
X
X
X
X
X
X
X
X
X
X
X

ELISION

by AGF

XXXXXXXXXXXXXXXXXXXXXXXXXXXX



QUILT DESIGNED BY AGF STUDIO AGFstudio



FABRICS DESIGNED BY AGF STUDIO



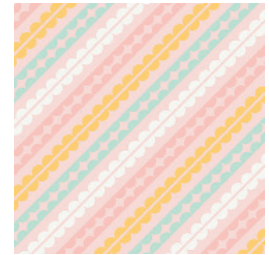
FUS-R-800
SPRAYED BLOOMS REVERIE



FUS-R-801
+ YOUR HEART REVERIE



FUS-R-802
FLORAL FROLIC REVERIE



FUS-R-803
ENTRYWAYS REVERIE



FUS-R-804
AVES CHATTER REVERIE



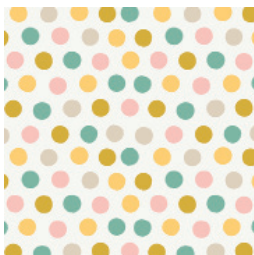
FUS-R-805
I SPY REVERIE



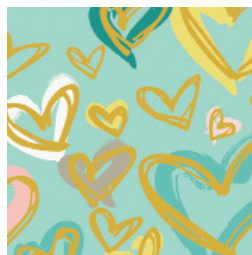
FUS-R-806
ABIDING REVERIE



FUS-R-807
HEARTFELT REVERIE



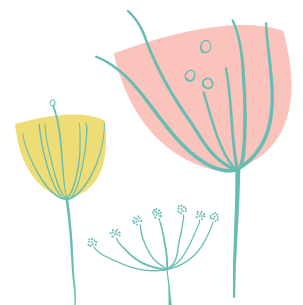
FUS-R-808
COTTONTAILS REVERIE



FUS-R-809
WHERE THE HEART IS REVERIE



FEEL THE DIFFERENCE ©2017 Courtesy of Art Gallery Quilts LLC. All Rights Reserved.





FINISHED SIZE | 67" x 84"

FABRIC REQUIREMENTS

REVERIE

| | | |
|----------|-----------|-------------------|
| Fabric A | FUS-R-800 | $\frac{3}{4}$ yd. |
| Fabric B | FUS-R-802 | $\frac{3}{8}$ yd. |
| Fabric C | FUS-R-803 | $\frac{1}{2}$ yd. |
| Fabric D | FUS-R-804 | $\frac{1}{4}$ yd. |
| Fabric E | FUS-R-805 | $\frac{3}{8}$ yd. |
| Fabric F | FUS-R-806 | $\frac{1}{2}$ yd. |
| Fabric G | FUS-R-807 | $\frac{1}{4}$ yd. |
| Fabric H | FUS-R-808 | $\frac{3}{8}$ yd. |
| Fabric I | FUS-R-809 | $\frac{7}{8}$ yd. |

PURE ELEMENTS

| | | |
|----------|--------|---------------------|
| Fabric J | PE-433 | 3 $\frac{5}{8}$ yd. |
| Fabric K | PE-464 | $\frac{1}{2}$ yd. |
| Fabric L | PE-450 | $\frac{1}{3}$ yd. |

BINDING FABRIC

Fabric A FUS-R-809 (*Included*)

BACKING FABRIC

FUS-R-803 (*Recommended*) 5 $\frac{1}{4}$ yds.

CUTTING DIRECTIONS

$\frac{1}{4}$ " seam allowances are included.
WOF means width of fabric.

Preparing Pattern Pieces

Cut out the four pattern pieces printed in the back of the instructions. Fuse two layers of freezer paper together (both shiny side down) and trace and cut out the pattern pieces from it to create durable cutting and pressing templates.

Cutting the Flower Petals

Twenty-five petals fit on one 3 $\frac{1}{4}$ " x WOF strip. First cut the angled sides of the template (as shown in Diagram 1) to create tumbler shapes and then cut use the Petal Cutting Template as a guide to cut the curve (not to be confused with the pressing template).

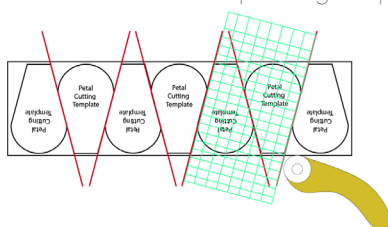


DIAGRAM 1

Cut:

- Two (2) 3 $\frac{1}{2}$ " x 28" strips from fabric A
- One (1) 3 $\frac{1}{2}$ " x 26" strip from fabric A
- Seventy-seven (77) Petals from fabric A
- Two (2) 3 $\frac{1}{2}$ " x 21" strips from fabrics B, E, F, H
- One (1) 6 $\frac{1}{2}$ " x 19 $\frac{1}{2}$ " strip from fabrics B, E, F, H
- Forty-two (42) Petals from fabric F
- Thirty-four (34) Petals from fabric C
- Two (2) 3 $\frac{1}{2}$ " x 14" strips from fabric C, D, G
- One (1) 6 $\frac{1}{2}$ " x 13" strips from fabric C, D, G
- Twenty (20) 10 $\frac{1}{2}$ " x 1 $\frac{1}{2}$ " strips from fabric I
- Seven (7) Flower Centers from fabric I
- Ten (10) 10 $\frac{1}{2}$ " x 10 $\frac{1}{2}$ " squares from fabric J
- Ten (10) 12 $\frac{1}{2}$ " x 12 $\frac{1}{2}$ " squares from fabric J
 - Cut four (4) of the 12 $\frac{1}{2}$ " squares across the diagonal for side-setting.
 - Cut one of the above triangles in half into two triangles for corner-setting.
- One (1) 6 $\frac{1}{2}$ " x 28" strip from fabric J
- Four (4) 6 $\frac{1}{2}$ " x 21" strips from fabric J
- Three (3) 6 $\frac{1}{2}$ " x 14" strips from fabric J
- Two (2) 3 $\frac{1}{2}$ " x 26" strips from fabric J
- Eight (8) 3 $\frac{1}{2}$ " x 19 $\frac{1}{2}$ " strips from fabric J
- Six (6) 3 $\frac{1}{2}$ " x 13" strips from fabric J
- Thirty-five (35) Petals from fabric K
- Thirty-five (35) Petals from fabric K
- Forty-three (43) Petals from fabric L
- Seven (7) Flower Centers from fabric L

CONSTRUCTION

Sew all rights sides together with $\frac{1}{4}$ " seam allowance.

Making the 9 Patch Blocks

Fabric A Blocks

Strip Set A

- Pin your two 3 $\frac{1}{2}$ " x 28" strips in Fabric A to the long sides of your 6 $\frac{1}{2}$ " x 28" Fabric J strip, right sides together and sew. Press and cross-cut every 3 $\frac{1}{2}$ " inches.
- (see Diagram 2)

XX



- Pin your two 3.5" x 26" strips in Fabric J to the long sides of your 6.5" x 26" Fabric A strip, right sides together and sew. Press and cross-cut every 6.5" inches. (see Diagram 3)

DIAGRAM 3

- Sew together Piece A > Piece B > Piece A, completing your 9-Patch block. (see Diagram 4)

DIAGRAM 4

- 3 ½" x 19 ½" (Fabric J) > 6 ½" x 19 ½" (Fabric F) > 3 ½" x 19 ½" (Fabric J). Cross-cut every 6 ½"

Fabric G Blocks

Strip Set A:

- $3\frac{1}{2}" \times 14"$ (Fabric G) > $6\frac{1}{2}" \times 14"$ (Fabric J) > $3\frac{1}{2}" \times 14"$ (Fabric G). Cross-cut every $3\frac{1}{2}"$

Strip Set B:

- $3\frac{1}{2}" \times 13"$ (Fabric J) > $6\frac{1}{2}" \times 13"$ (Fabric G) > $3\frac{1}{2}" \times 13"$ (Fabric J). Cross-cut every $6\frac{1}{2}"$

Fabric H Blocks

Strip Set A:

- $3\frac{1}{2}" \times 21"$ (Fabric H) > $6\frac{1}{2}" \times 21"$ (Fabric J) > $3\frac{1}{2}" \times 21"$ (Fabric H). Cross-cut every $3\frac{1}{2}"$

Strip Set B:

- $3\frac{1}{2}" \times 19\frac{1}{2}"$ (Fabric J) > $6\frac{1}{2}" \times 19\frac{1}{2}"$ (Fabric H) > $3\frac{1}{2}" \times 19\frac{1}{2}"$ (Fabric J). Cross-cut every $6\frac{1}{2}"$

- Set blocks A-H aside.

- Take one (1) g-Patch block each of Fabrics B, H, and G and cut all three diagonally as shown in diagram 5.

- Set aside with the rest of the blocks. (These will be used on the ends of the rows when assembling the on-point layout.)

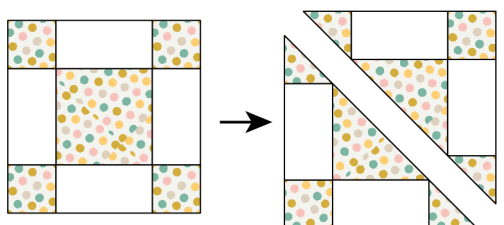


DIAGRAM 5

Daisy Dresden Blocks

- Sew the (Fabric I) $1\frac{1}{2}" \times 10\frac{1}{2}"$ strips to the top and bottom of the (Fabric J) $10\frac{1}{2}"$ squares. Then sew the (Fabric I) $1\frac{1}{2}" \times 12\frac{1}{2}"$ strips to the sides of the block. See diagram 6

- Make 10. Set aside

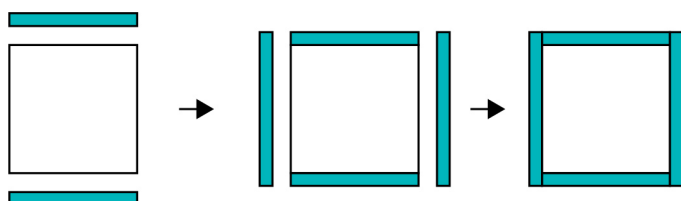


DIAGRAM 6

Making Daisy Dresden Plates

- Gather the cut petals in the appropriate fabrics and affix the Petal Pressing Template shiny side down to the wrong side of the petal fabric by lining up the bottom and sides and lightly pressing with the iron.
- Now, spray some spray starch in a bowl and take a paint brush and wet the extra fabric above the template a little at a time, then using a stiletto or tweezers to keep the fabric in place press with the iron. Continue until the entire top is turned.
- Place a tailor's clapper or book on top of the petal after pressing to set the press. When fabric has cooled peel the template off.
- TIP: Make a couple freezer paper templates so you can be working on multiple petals while some are cooling off.
- After you have finished pressing arrange petals into flowers with alternating fabric and pin pairs of petals together.
- Sew at $\frac{1}{4}"$ seam allowance, making sure to match petals at the top curve (don't worry if the bottoms don't perfectly match as those will be covered).
- Sew three pairs together to make two halves of a flower, and then sew the halves together.
- Turn under the edges of your flower center using the pressing template on the wrong side of the fabric, and painting with starch while pressing as you did with the petals.
- Pin the Daisy Dresden to the center of the corresponding block and then pin the Daisy Center on top and Sew down using a blanket stitch or your preferred appliqué stitch.

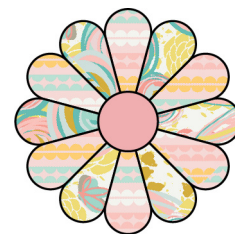


DIAGRAM 7

Daisy 1

Petals: Fabrics A & C

Center: Fabric L

Make 4 Flowers

Make 3 Half-Flowers (6 Petals)

Make 1 Quarter-Flower (3 Petals)

- Sew two (2) Daisy 1 Dresdens onto the $12\frac{1}{2}"$ Fabric J blocks.
- Sew two (2) Daisy 1 Dresdens onto the blocks with Fabric I borders.
- Sew three (3) half-Daisy 1 Dresdens onto the $12\frac{1}{2}"$ Fabric J blocks cut on the diagonal.
- Sew one (1) quarter-Daisy 1 Dresden onto the $12\frac{1}{2}"$ Fabric J block quarter triangle. See diagram ###.

Daisy 2

Petals: Fabrics F & L
Center: Fabric K
Make 6 Flowers
Make 2 Half-Flowers (6 Petals)
Make 1 Quarter-Flower (3 Petals)

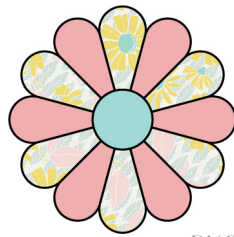


DIAGRAM 8

- Sew two (2) Daisy 2 Dresdens onto the 12 ½" Fabric J blocks.
- Sew four (4) Daisy 2 Dresdens onto the blocks with Fabric I borders.
- Sew two (2) half-Daisy 2 Dresdens onto the 12 ½" Fabric J blocks cut on the diagonal.
- Sew one (1) quarter-Daisy 2 Dresden onto the 12 ½" Fabric J block quarter triangle.

Daisy 3

Petals: Fabrics A & K
Center: Fabric I
Make 6 Flowers
Make 2 Half-Flowers (6 Petals)



DIAGRAM 9

- Sew two (2) Daisy 3 Dresdens onto the 12 ½" Fabric J blocks.
- Sew four (4) Daisy 3 Dresdens onto the blocks with Fabric I borders.
- Sew two (2) half-Daisy 3 Dresdens onto the 12 ½" Fabric J blocks cut on the diagonal.

Making Half and Quarter Daisies: Follow instructions for making regular daisies, but only use 6 (or 3) petals and cut the center in half or quarters before affixing.

TOP ASSEMBLY

*¼" seam allowances are included.
WOF means width of fabric.*

This quilt top is arranged in a diagonal 'on-point' layout. Sew blocks into rows, press odd rows to the left, and even rows to the right so seams nest. Sew the rows together according to layout (diagram 10). Alternate starting points when sewing rows together to prevent quilt top skewing.

- Row 1: Block A
- Row 2: Daisy 1 Half > Daisy 3 w/Border > Daisy 2 Half
- Row 3: B Half > E > F > H > B Half
- Row 4: 1 Half > 3 w/ border > 2 > 1 w/border > 3 > 2 w/ border > 1 Half
- Row 5: C > A > D > A > G > B > E > F > H
- Row 6: 3 Half > 2 w/border > 1 > 3 w/border > 2 > 1 w/ border > 3 > 2 w/border > 1 Quarter

- Row 7: H > F > E > C > A > D > G
- Row 8: 3 Half > 2 w/Border > 1 > 3 w/border > 2 Half
- Row 9: G > B > H
- Row 10: Daisy 2 Quarter

Press quilt and square off corners.

QUILT ASSEMBLY

Sew rights sides together.

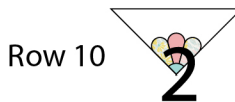
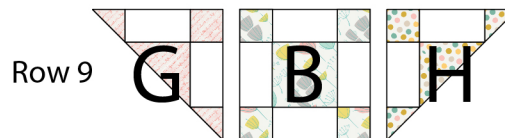
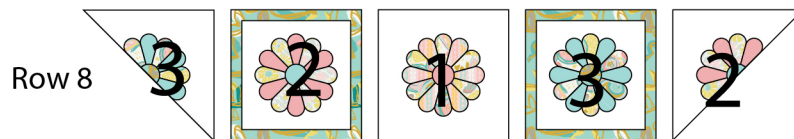
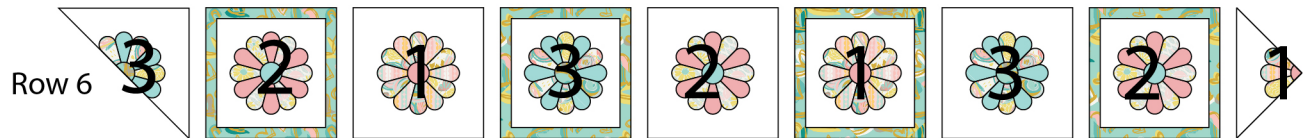
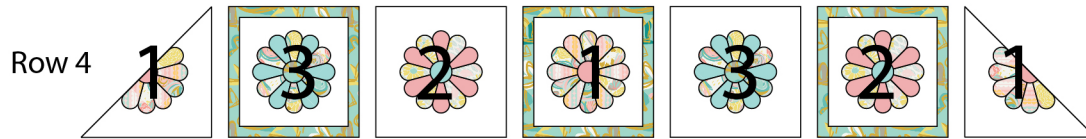
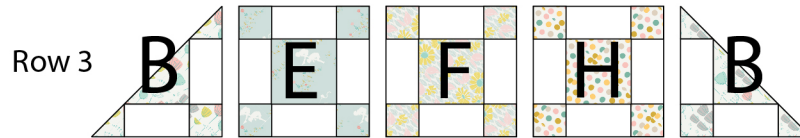
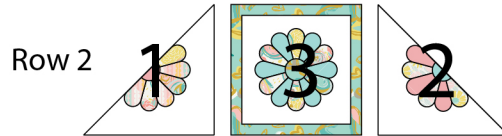
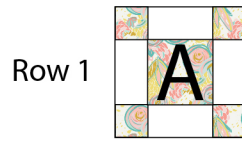
- © Place BACKING FABRIC on a large surface wrong side up. Stretch it with masking tape against that surface.
- © Place BATTING on top of backing fabric.
- © Place TOP on top of the batting with right side facing up. Smooth away wrinkles using your hands.
- © Pin all layers together and baste with basting thread, using long stitches. You can also use safety pins to join the layers.
- © Machine or hand quilt starting at the center and working towards the corners. Remember that quilting motifs are a matter of personal preference. Have fun choosing yours!
- © After you finished, trim excess of any fabric or batting, squaring the quilt to proceed to bind it.

BINDING

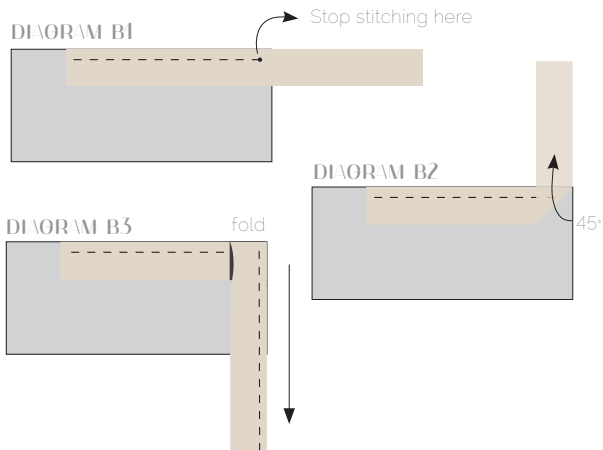
Sew rights sides together.

- Cut enough strips 1½" wide by the width of the fabric A to make a final strip 312" long. Start sewing the binding strip in the middle of one of the sides of the quilt, placing the strip right side down and leaving an approximated 5" tail. Sew with ¼" seam allowance (using straight stitch), aligning the strip's raw edge with the quilt top's raw edge.
- © Stop stitching ¼" before the edge of the quilt (DIAGRAM B 1). Clip the threads. Remove the quilt from under the machine presser foot. Fold the strip in a motion of 45° and upward, pressing with your fingers (DIAGRAM B2). Hold this fold with your finger, bring the strip down in line with the next edge, making a horizontal fold that aligns with the top edge of the quilt (DIAGRAM B3). Start sewing at ¼" of the border, stitching all the layers. Do the same in the four corners of the quilt.

Quilt Assembly Diagram



- © Stop stitching before you reach the last 5 or 6 inches. Cut the threads and remove the quilt from under the machine presser foot. Lay the loose ends of the binding flat along the quilt edge, folding the ends back on themselves where they meet. Press them together to form a crease. Using this crease as the stitching line, sew the two open ends of the binding with right sides together (you can help yourself marking with a pencil if the crease is difficult to see).
- © Trim seam to $\frac{1}{4}$ " and press open. Complete the sewing. Turn binding to back of the quilt, turn raw edge inside and stitch by hand using blind stitch.



artgalleryfabrics.com

NOTE: While all possible care has been taken to ensure the accuracy of this pattern, We are not responsible for printing errors or the way in which individual work varies. Please read instructions carefully before starting the construction of this quilt. If desired, wash and iron your fabrics before starting to cut.

©2017 Courtesy of Art Gallery Quilts LLC. All Rights Reserved.

