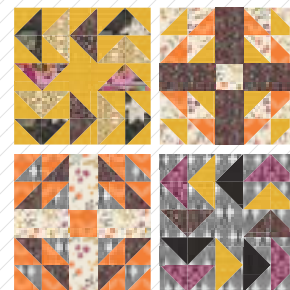


Four quilt squares are displayed. The top-left square features a central floral pattern surrounded by a border of small, repeating geometric shapes. The top-right square has a central floral pattern with a border of small, repeating geometric shapes. The bottom-left square features a central floral pattern with a border of small, repeating geometric shapes. The bottom-right square has a central floral pattern with a border of small, repeating geometric shapes.

by **AGF**

XXXXXXXXXXXXXXXXXXXXXXXXXXXX

Impressions



QUILT DESIGNED BY AGF STUDIO AGFstudio

Spices FUSION

FABRICS DESIGNED BY AGF STUDIO



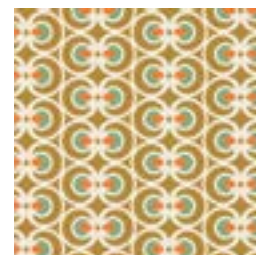
FUS-S-700
WILLOW BLOOMS SPICES



FUS-S-701
PLOTTED FARM SPICES



FUS-S-702
THRIVE SPICES



FUS-S-703
OP ART SPICES



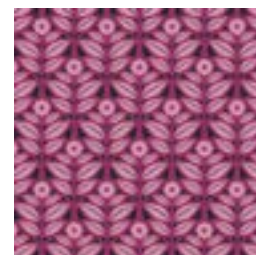
FUS-S-704
JOY PLANTE SPICES



FUS-S-705
BLOSSOM SWALE SPICES



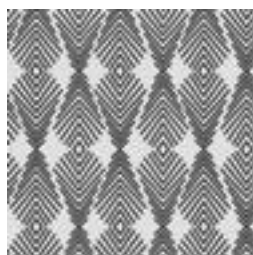
FUS-S-706
PRETTY DITSY SPICES



FUS-S-707
IMPRESSIONS SPICES



FUS-S-708
PAPAROUNES SPICES



FUS-S-709
PLUMAGE SPICES



FINISHED SIZE | 10' x 10'

FABRIC REQUIREMENTS

Fabric A	FUS-S-700	1/8 yd.
Fabric B	FUS-S-701	1/6 yd.
Fabric C	FUS-S-705	1/6 yd.
Fabric D	FUS-S-706	1/6 yd.
Fabric E	FUS-S-708	1/8 yd.
Fabric F	FUS-S-704	1/8 yd.
Fabric G	FUS-S-703	1/8 yd.

CUTTING DIRECTIONS

1/4" seam allowances are included.
WOF means width of fabric.

- Four (4) 2 1/2' x 4 1/2" rectangle strips from fabrics A
- Four (4) 2 1/2' x 4 1/2" rectangle strips from fabrics I
- Two (2) 2 1/2' x 4 1/2" rectangle strips from fabrics D
- Two (2) 2 1/2' x 4 1/2" rectangle strips from fabrics E
- Twelve (12) 2 7/8" perfect square from Fabric B
- One (1) 2 1/2" perfect square from Fabric B, C
- Eight (8) 2 7/8" perfect square from Fabric C
- Four (4) 2 7/8" perfect square from Fabric B, F
- Four (4) 2 1/2" x 4 1/2" rectangle from Fabric D

CONSTRUCTION

Sew all rights sides together with 1/4" seam allowance.

BLOCK # 1

Flying Geese Construction

- Place a marked 2 7/8" square from Fabric B right sides together on the left side of a 4 1/2" x 2 1/2" rectangle from Fabric A as shown.
- Stitch on the drawn line. Trim seam allowance to 1/4". Press corner open. In the same manner, sew a 2 7/8" square to the remaining corner, trim and press.

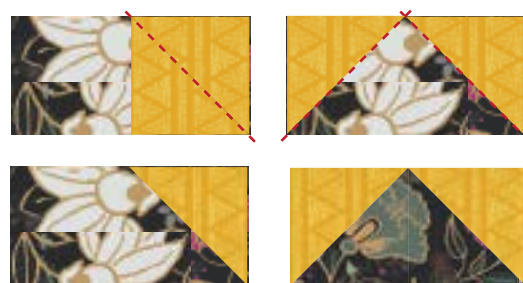


DIAGRAM 1

- Repeat the same process with the other 4 1/2" x 2 1/2" rectangles from Fabric A with a 2 7/8" square from Fabric B. You will have a total of 4 flying geese.
- Follow the same flying geese direction for the following fabrics:



DIAGRAM 2

- Now, take Fabric **A-B** flying geese piece and pair it with an **G-B** piece. (points facing left)
- Take Fabric **D-B** piece. and pair it with the previous pieces.

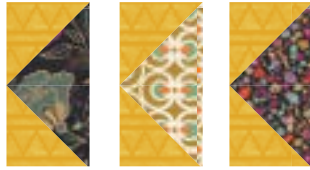


DIAGRAM 3

- Take a take Fabric **A-B** flying geese piece and rotate it, points facing up and pair it with a Fabric **D-B** piece.
- Now, tacke that piece and pair it with the previous assembled pieces (diagram below)

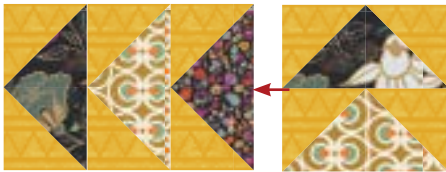


DIAGRAM 4

- To create the bottom row, repeat the same process as above.
- Now, take a Fabric **E-B** flying geese piece and pair it with an 2½" perfect square from Fabric **B** then pair another flying geese from Fabric **E-B**



DIAGRAM 5

- To assemble the 3 pieces together, see diagram below for instructions:

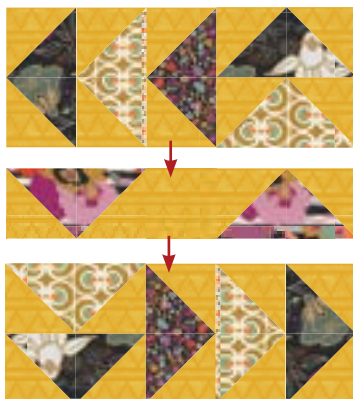
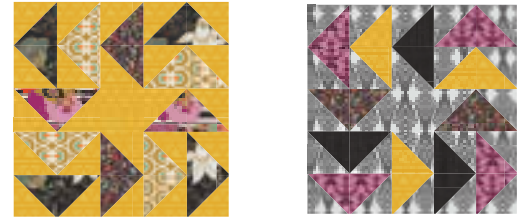


DIAGRAM 6

XX

- Now that you have the block assembled, quilt as desired.
- If you want to create the other block with different prints, follow the same directions as Block 1



BLOCK # 2

- Start by pairing all the HST:
- Pair a 2 $\frac{7}{8}$ " perfect square from Fabric **C** with an 2 $\frac{7}{8}$ " perfect square from Fabric **B**
- Draw a diagonal line on the wrong side of each pair
- Sew a $\frac{1}{4}$ " seam on either side of the drawing line
- Cut directly on the drawn line
- You will have a total of 8 HST with Fabric **C-B**
- Repeat the same process for fabrics **F-B**
- You will have a total of 8 HST with Fabric **F-B**

F-B = 8 C-B = 8



- Now, take a **C-B** HST and pair it with a **F-B** HST
- Then take a **F-B** HST and pair it with a **C-B** HST
- Pair the two rows together



DIAGRAM 7

- Repeat the same process in order to have 4 pieces assembled as diagram above.

- Now, take one of the blocks and pair it with an $2\frac{1}{2}$ " x $4\frac{1}{2}$ " rectangle from Fabric **D**
- Then, take another block and face it in mirror effect and pair it with the other pieces. (diagram below)

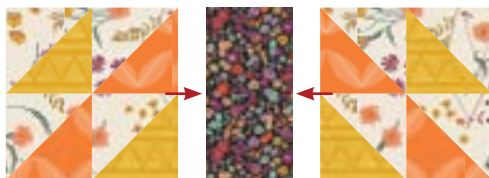


DIAGRAM 8

- Repeat the same process for the bottom row and rotate the piece so you have them facing up

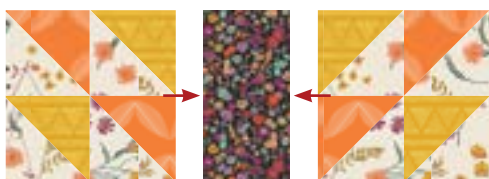


DIAGRAM 9

- Now take a $4\frac{1}{2}$ "x $2\frac{1}{2}$ " rectangle from Fabric **D** and pair it with an $2\frac{1}{2}$ " perfect square from Fabric **C**
- Take another $4\frac{1}{2}$ "x $2\frac{1}{2}$ " rectangle from Fabric **D** and pair it with the previous pieces.
- Now, assemble all three rows together by pairing it as diagram below.

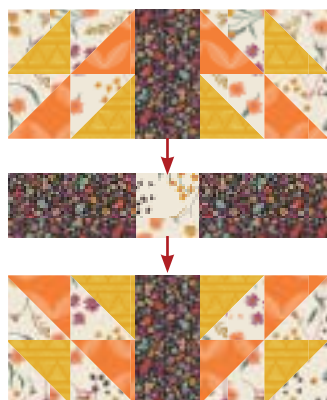


DIAGRAM 10

- Now that you have the block assembled, quilt as desired.
- If you want to create the other block with different prints, follow the same directions as Block 2
- Enjoy your colorful blocks!!!



FEEL THE DIFFERENCE

artgalleryfabrics.com

NOTE: While all possible care has been taken to ensure the accuracy of this pattern, We are not responsible for printing errors or the way in which individual work varies. Please read instructions carefully before starting the construction of this quilt. If desired, wash and iron your fabrics before starting to cut.

© 2017 Courtesy of Art Gallery Quilts LLC. All Rights Reserved.



