

The logo for FUSIONS features the word "FUSIONS" in a bold, dark blue, sans-serif font. The letter "i" is replaced by a stylized sun icon with a yellow center and radiating lines. The letters "F", "S", and "N" have small, colorful rectangular accents (green, orange, and pink respectively) on their right sides.

by AGF

XXXXXXXXXXXXXXXXXXXX



DESIGNED BY AGF STUDIO AGFstudio



reverie FUSION

FABRICS DESIGNED BY AGF STUDIO



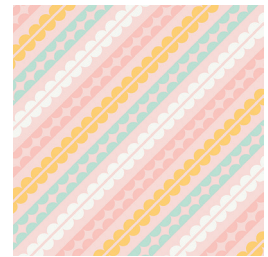
FUS-R-800
SPRAYED BLOOMS REVERIE



FUS-R-801
+ YOUR HEART REVERIE



FUS-R-802
FLORAL FROLIC REVERIE



FUS-R-803
ENTRYWAYS REVERIE



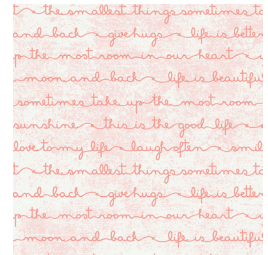
FUS-R-804
AVES CHATTER REVERIE



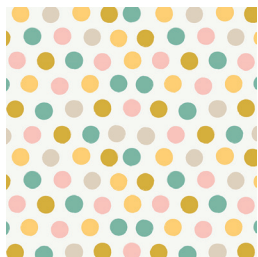
FUS-R-805
I SPY REVERIE



FUS-R-806
ABIDING REVERIE



FUS-R-807
HEARTFELT REVERIE



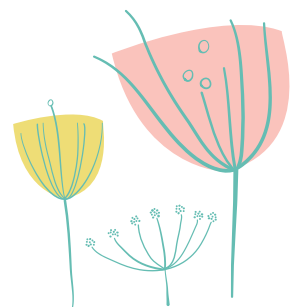
FUS-R-808
COTTONTAILS REVERIE



FUS-R-809
WHERE THE HEART IS REVERIE



FEEL THE DIFFERENCE © 2017 Courtesy of Art Gallery Quilts LLC. All Rights Reserved.





FINISHED SIZE | 18" x 22"

FABRIC REQUIREMENTS

Fabric A	FUS-R-808	¼ yd.
Fabric B	FUS-R-809	⅓ yd.
Fabric C	FUS-R-801	F8.
Fabric D	FUS-R-803	F8.
Fabric E	PE-433	⅓ yd.
Fabric F	PE-410	¼ yd.

BINDING FABRIC

Fabric **B** FUS-R-809 *(Included)*

BACKING FABRIC

FUS-R-802 *(Recommended)* 5 yds.

CUTTING DIRECTIONS

*¼" seam allowances are included.
WOF means width of fabric.*

- Four (4) $4\frac{7}{8}$ " x $4\frac{7}{8}$ " squares from fabrics **A** and **B**.
- Two (2) $4\frac{1}{2}$ " x $4\frac{1}{2}$ " squares from fabric **A**.
- One (1) $4\frac{1}{2}$ " x $4\frac{1}{2}$ " square from fabric **B**.
- Six (6) $\frac{1}{2}$ " x 1" rectangles from fabric **C**.
- Five (5) $4\frac{7}{8}$ " x $4\frac{7}{8}$ " squares from fabric **E**.
- Five (5) $4\frac{1}{2}$ " x $4\frac{1}{2}$ " squares from fabric **E**.
- Two (2) $20\frac{1}{2}$ " x $1\frac{1}{2}$ " squares from fabric **E**.
- Two (2) $18\frac{1}{2}$ " x $1\frac{1}{2}$ " squares from fabric **E**.
- Template **a** from fabric **C**.
- Template **b** from fabric **D**.
- Templates **c** and **d** from fabric **E**.
- Templates **e, f, g, h, i, j, k, l** and **m** from fabric **F**.

CONSTRUCTION

Sew all rights sides together with ¼" seam allowance.

- Cut all the $4\frac{7}{8}$ " x $4\frac{7}{8}$ " squares into HST.
- Create the following HST squares.

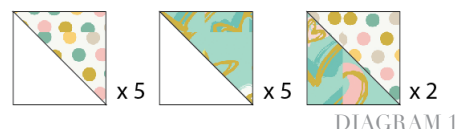


DIAGRAM 1

- Assemble the base following Diagram 2.

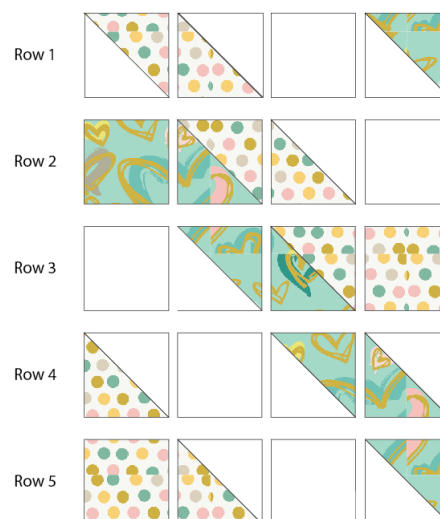


DIAGRAM 2

- Add the strips from fabric **E** starting by the top and bottom ones, and then the sides.

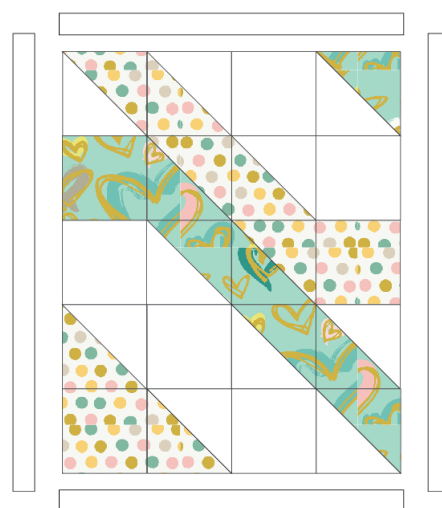


DIAGRAM 3

- Overlap the templates until you get the following emojis:



DIAGRAM 4

- Pin the emojis to the piece as you prefer before quilting your piece.

QUILT ASSEMBLY

Sew rights sides together.

- Place BACKING FABRIC on a large surface wrong side up. Stretch it with masking tape against that surface.
- Place BATTING on top of backing fabric.
- Place TOP on top of the batting with right side facing up. Smooth away wrinkles using your hands.
- Pin all layers together and baste with basting thread, using long stitches. You can also use safety pins to join the layers.
- Machine or hand quilt starting at the center and working towards the corners. Remember that quilting motifs are a matter of personal preference. Have fun choosing yours!
- After you finished, trim excess of any fabric or batting, squaring the quilt to proceed to bind it.

DIAGRAM B1

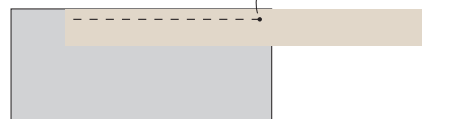
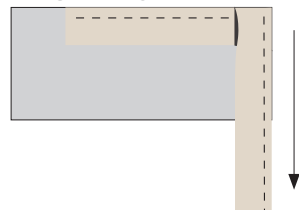


DIAGRAM B2



DIAGRAM B3



BINDING

Sew rights sides together.

- Cut enough strips $1\frac{1}{2}$ ' wide by the width of the fabric **B** to make a final strip 90' long. Start sewing the binding strip in the middle of one of the sides of the quilt, placing the strip right side down and leaving an approximated 5' tail. Sew with $\frac{1}{4}$ " seam allowance (using straight stitch), aligning the strip's raw edge with the quilt top's raw edge.
- Stop stitching $\frac{1}{4}$ ' before the edge of the quilt (**DIAGRAM B 1**). Clip the threads. Remove the quilt from under the machine presser foot. Fold the strip in a motion of 45° and upward, pressing with your fingers (**DIAGRAM B2**). Hold this fold with your finger, bring the strip down in line with the next edge, making a horizontal fold that aligns with the top edge of the quilt (**DIAGRAM B3**). Start sewing at $\frac{1}{4}$ ' of the border, stitching all the layers. Do the same in the four corners of the quilt.
- Stop stitching before you reach the last 5 or 6 inches. Cut the threads and remove the quilt from under the machine presser foot. Lay the loose ends of the binding flat along the quilt edge, folding the ends back on themselves where they meet. Press them together to form a crease. Using this crease as the stitching line, sew the two open ends of the binding with right sides together (you can help yourself marking with a pencil if the crease is difficult to see).
- Trim seam to $\frac{1}{4}$ " and press open. Complete the sewing. Turn binding to back of the quilt, turn raw edge inside and stitch by hand using blind stitch.



artgalleryfabrics.com

NOTE: While all possible care has been taken to ensure the accuracy of this pattern, We are not responsible for printing errors or the way in which individual work varies. Please read instructions carefully before starting the construction of this quilt. If desired, wash and iron your fabrics before starting to cut.

a

b



g

f



m



