



FUSIONS



by AGF

FREE PATTERN





DESIGNED BY AGF STUDIO

AGFstudio



reverie FUSION

FABRICS DESIGNED BY AGF STUDIO



FUS-R-800
SPRAYED BLOOMS REVERIE



FUS-R-801
+ YOUR HEART REVERIE



FUS-R-802
FLORAL FROLIC REVERIE



FUS-R-803
ENTRYWAYS REVERIE



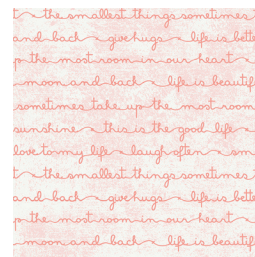
FUS-R-804
AVES CHATTER REVERIE



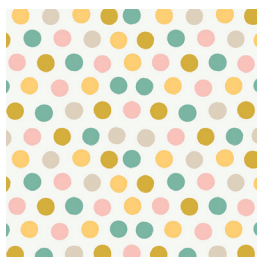
FUS-R-805
I SPY REVERIE



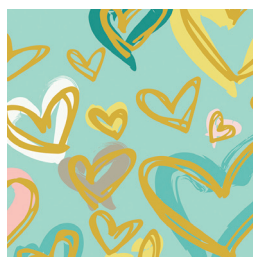
FUS-R-806
ABIDING REVERIE



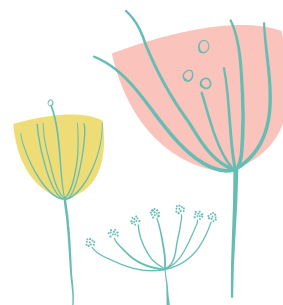
FUS-R-807
HEARTFELT REVERIE



FUS-R-808
COTTONTAILS REVERIE



FUS-R-809
WHERE THE HEART IS REVERIE



FEEL THE DIFFERENCE © 2017 Courtesy of Art Gallery Quilts LLC. All Rights Reserved.



FINISHED SIZE | 20" Diameter

FABRIC REQUIREMENTS

Fabric A	FUS-R-807	1 yd.
Fabric B	FUS-R-808	F8.
Fabric C	FUS-R-801	¼ yd.
Fabric D	PE-424	¾ yd.
Fabric E	PE-411	¼ yd.

BACKING FABRIC

FUS-R-807 (Recommended) ⅝ yd.

CUTTING DIRECTIONS

¼" seam allowances are included.
WOF means width of fabric.

- Forty four (44) templates **a** from fabric **A**.
- Sixteen (16) template **a** from fabrics **C**, **D** and **E**.
- One (1) template **b** from fabric **B**.
- One (1) template **c** from fabric **D**.

CONSTRUCTION

Sew all rights sides together with ¼" seam allowance.

- Take four (4) template **a** from fabric **E**.
- Join them following Diagram 1.

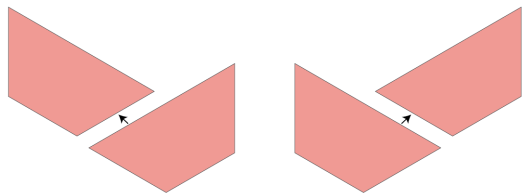


DIAGRAM 1

- Take four (4) template **a** from fabric **A**.
- Join them following Diagram 2.

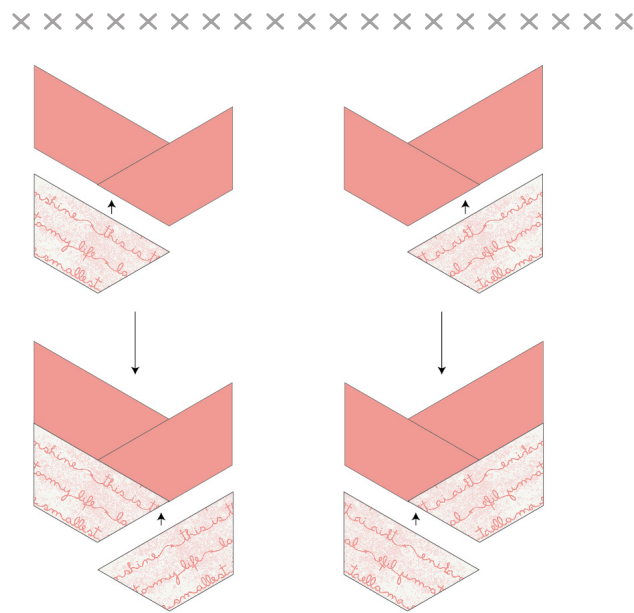


DIAGRAM 2

- Keep adding template **a** from fabrics **A**, **C**, **D** and **E** to both columns until they look like Diagram 3.

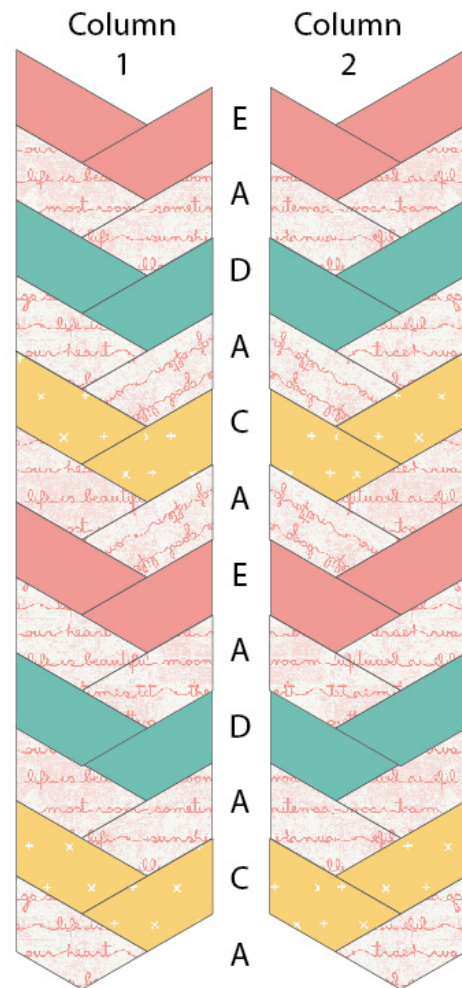


DIAGRAM 3

- Repeat the previous steps so you end up with two (2) column 1 and two (2) column 2.
- Join the four columns following Diagram 4.

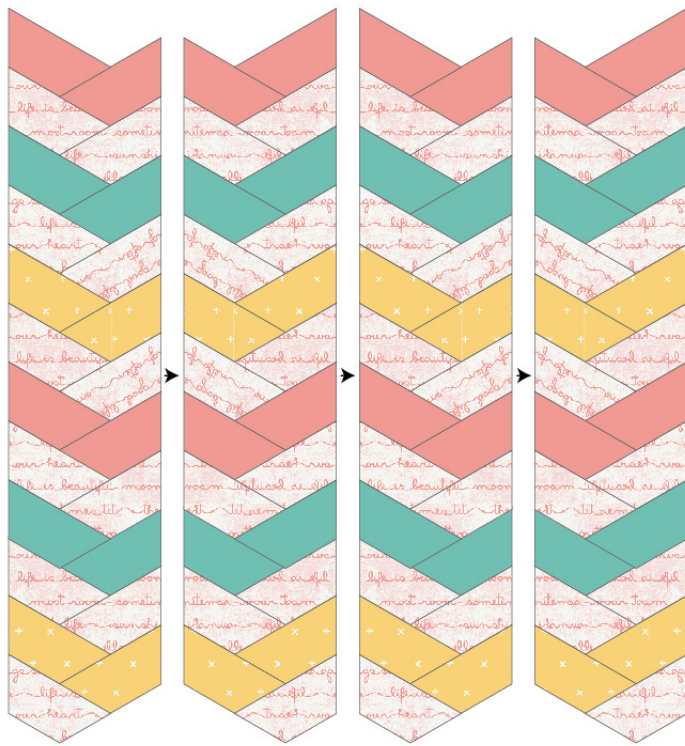


DIAGRAM 4

- Subcut the final piece into a circle with a diameter of 20"
- Overlap template **b** over template **c**, and pin them to the circle before quilting.

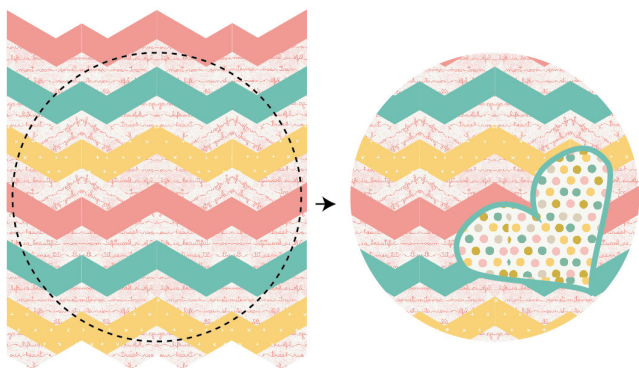


DIAGRAM 5

PILLOW TOP ASSEMBLY

Sew rights sides together.

- Pin all layers together and baste with basting thread, using long stitches. You can also use safety pins to join the layers.
- Machine or hand quilt starting at the center and working towards the corners. Remember that quilting motifs are a matter of personal preference. Have fun choosing yours!
- After you finished, trim excess of any fabric or batting, squaring the pillow.

CREATING THE BACK PILLOW

- Make a perfect circle from fabric **A** measuring 21" in diameter.
- Place the top pillow and the circle right sides together and saw all around leaving a 3" gap.
- Flip the pillow and fill it with batting.
- Hand stitch the 3" gap to close it.
- Enjoy!



FEEL THE DIFFERENCE

artgalleryfabrics.com

PILLOW TOP ASSEMBLY

Sew rights sides together.

- Place BACKING FABRIC on a large surface wrong side up. Stretch it with masking tape against that surface.
- Place BATTING on top of backing fabric.
- Place TOP on top of the batting with right side facing up. Smooth away wrinkles using your hands.

NOTE: While all possible care has been taken to ensure the accuracy of this pattern, We are not responsible for printing errors or the way in which individual work varies.

Please read instructions carefully before starting the construction of this quilt. If desired, wash and iron your fabrics before starting to cut.

© 2017 Courtesy of Art Gallery Quilts LLC. All Rights Reserved.



Half Template c



On Fold