

The logo for FUSIONS features the word "FUSIONS" in a bold, dark blue, sans-serif font. The letter "O" is replaced by a stylized sun icon with a yellow center and radiating lines. Each letter has a small, colorful square (teal, orange, yellow, pink) on its right side.

by AGF

FREE PATTERN

XXXXXXXXXXXXXXXXXXXXXXXXXXXX



AGFstudio

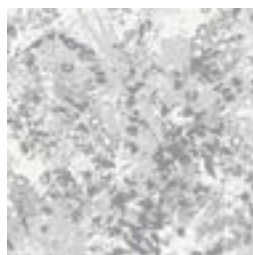


Bachelorette FUSION

FABRICS DESIGNED BY AGF STUDIO



FUS-BC-500
GARDEN ROCKET BACHELORETTE



FUS-BC-501
REBEL BRUSHSTROKES BACHELORETTE



FUS-BC-502
TINY DANCER BACHELORETTE



FUS-W-603
ALL PATHS BACHELORETTE



FUS-BC-504
FIREFLY BACHELORETTE



FUS-BC-505
TREKANT ROWS BACHELORETTE



FUS-BC-506
PANACHE BACHELORETTE



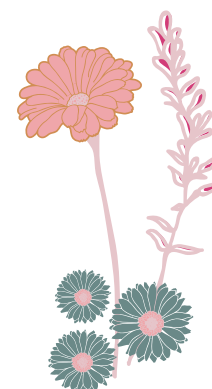
FUS-BC-507
FLOWER FIELD BACHELORETTE



FUS-BC-508
MUDCLOTH BACHELORETTE



FUS-BC-509
DRIPPING PAINT BACHELORETTE





FINISHED SIZE | 35" x 65 3/4"

FABRIC REQUIREMENTS

Fabric A	FUS-BC- 508	2/3 yd.
Fabric B	FUS-BC- 505	3/8 yd.
Fabric C	FUS-BC- 503	2/3 yds.
Fabric D	PE-408	1/2 yd.
Fabric E	PE-465	2/3 yd.
Fabric F	PE-431	1/3 yd.

BINDING FABRIC

Fabric **F** -PE-431 (Included)

BACKING FABRIC

FUS-BC-503 - 1 yd.

CUTTING DIRECTIONS

*1/4" seam allowances are included.
WOF means width of fabric.*

- Four (4) of Template 1 triangle from Fabric **A**
- Sixteen (16) of Template 2 triangle from Fabric **A**
- Sixteen (16) of Template 2 triangle from Fabric **B**
- Six (6) of Template 1 triangle from Fabric **C**
- Eight (8) of Template 2 triangle from Fabric **C**
- Eight (8) of Template 1 triangle from Fabric **D**
- Two (2) from Template 2 triangle from Fabric **D**
- Two (2) from Template 1 triangle from Fabric **E**
- Fourteen (14) from Template 2 triangle from Fabric **E**
- Six (6) strips of 1 1/2" x WOF from Fabric **F**

CONSTRUCTION

Sew all rights sides together with 1/4" seam allowance.

- Start by taking all Template 1 Triangle pieces from Fabric **D** and pair them with Template 2 Triangle pieces from Fabrics: **A, B, C, E** as diagram below:



DIAGRAM 1

- You will end up having two (2) blocks of **B-D-B** and **E-D-E**
- Now take all Template 1 Triangle pieces from Fabric **C** and pair them with Template 2 Triangle pieces from Fabrics: **A, B, E** as diagram below:



DIAGRAM 2

- You will end up having two (2) blocks of **E-C-A** and **A-C-E**
- Now take all Template 1 Triangle pieces from Fabric **A** and pair them with Template 2 Triangle pieces from Fabrics: **B, C, E** as diagram below:



DIAGRAM 3

- Now start pairing Template 2 Triangle from Fabric **B** with Template 2 Triangle from Fabric **D**.
- Pair Template 2 Triangle from Fabric **B** with Template 2 Triangle from Fabric **E**
- Pair Template 2 Triangle from Fabric **A** with Template 2 Triangle from Fabric **C**
- Pair Template 2 Triangle from Fabric **A** with Template 2 Triangle from Fabric **E**
- Pair Template 2 Triangle from Fabric **B** with Template 2 Triangle from Fabric **A**
- Pair Template 2 Triangle from Fabric **C** with Template 2 Triangle from Fabric **A**
- Pair Template 2 Triangle from Fabric **E** with Template 2 Triangle from Fabric **B**

- Pair Template 2 Triangle from Fabric **D** with Template 2 Triangle from Fabric **B**
- Pair another Template 2 Triangle from Fabric **A** with Template 2 Triangle from Fabric **C**
- Pair Template 2 Triangle from Fabric **A** with Template 2 Triangle from Fabric **B**
- Pair Template 2 Triangle from Fabric **E** with Template 2 Triangle from Fabric **A**
- Pair another Template 2 Triangle from Fabric **C** with Template 2 Triangle from Fabric **A**
- Now, start pairing the pieces in the following manner:



DIAGRAM 4

ASSEMBLING THE TOP

Sew all right sides together with 1/4" seam allowance. Press open.

- Refer to the cover quilt illustration and the diagram below to assemble the quilt top.
- Next, assemble rows first and then sew rows together to complete quilt top.

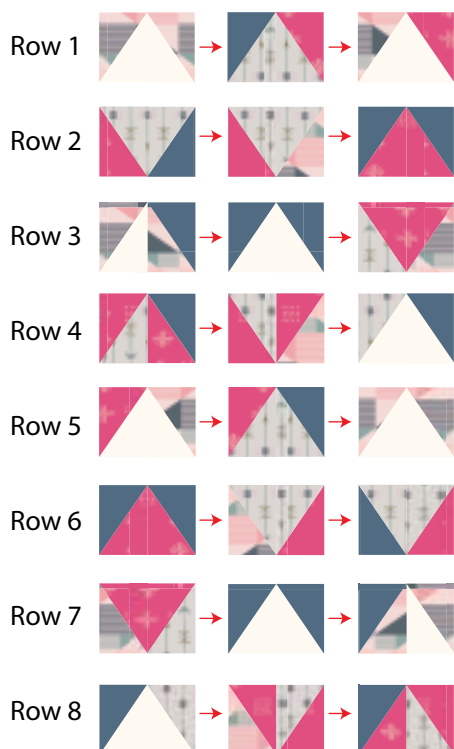


DIAGRAM 5



- Now, assemble the rows together to complete the table runner.

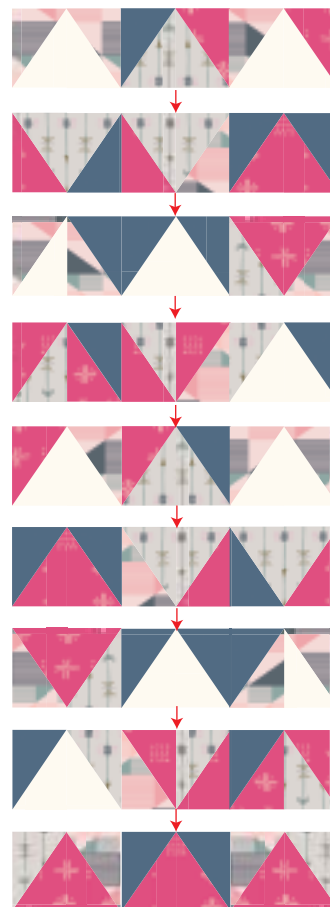


DIAGRAM 6

QUILT ASSEMBLY

Sew rights sides together.

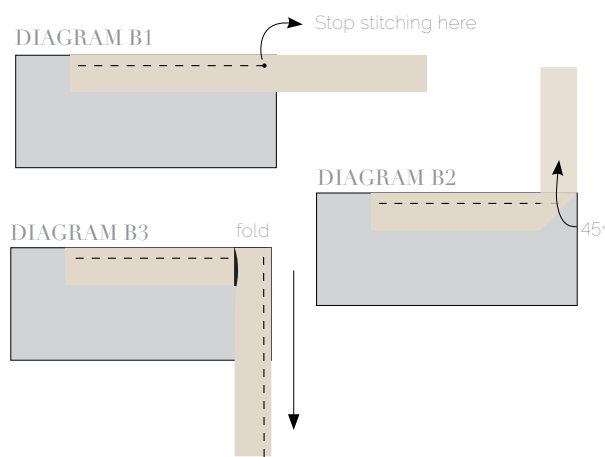
- Place BACKING FABRIC on a large surface wrong side up. Stretch it with masking tape against that surface.
- Place BATTING on top of backing fabric.
- Place TOP on top of the batting with right side facing up. Smooth away wrinkles using your hands.
- Pin all layers together and baste with basting thread, using long stitches. You can also use safety pins to join the layers.
- Machine or hand quilt starting at the center and working towards the corners. Remember that quilting motifs are a matter of personal preference. Have fun choosing yours!
- After you finished, trim excess of any fabric or batting, squaring the quilt to proceed to bind it.

BINDING

Sew rights sides together.

- Cut enough strips $1\frac{1}{2}$ ' wide by the width of the fabric **F** to make a final strip $211\frac{1}{2}$ ' long. Start sewing the binding strip in the middle of one of the sides of the quilt, placing the strip right side down and leaving an approximated 5" tail. Sew with $\frac{1}{4}$ " seam allowance (using straight stitch), aligning the strip's raw edge with the quilt top's raw edge.
- Stop stitching $\frac{1}{4}$ " before the edge of the quilt (**DIAGRAM B 1**). Clip the threads. Remove the quilt from under the machine presser foot. Fold the strip in a motion of 45° and upward, pressing with your fingers (**DIAGRAM B2**). Hold this fold with your finger, bring the strip down in line with the next edge, making a horizontal fold that aligns with the top edge of the quilt (**DIAGRAM B3**). Start sewing at $\frac{1}{4}$ " of the border, stitching all the layers. Do the same in the four corners of the quilt.

- XX
- Stop stitching before you reach the last 5 or 6 inches. Cut the threads and remove the quilt from under the machine presser foot. Lay the loose ends of the binding flat along the quilt edge, folding the ends back on themselves where they meet. Press them together to form a crease. Using this crease as the stitching line, sew the two open ends of the binding with right sides together (you can help yourself marking with a pencil if the crease is difficult to see).
 - Trim seam to $\frac{1}{4}$ " and press open. Complete the sewing. Turn binding to back of the quilt, turn raw edge inside and stitch by hand using blind stitch.

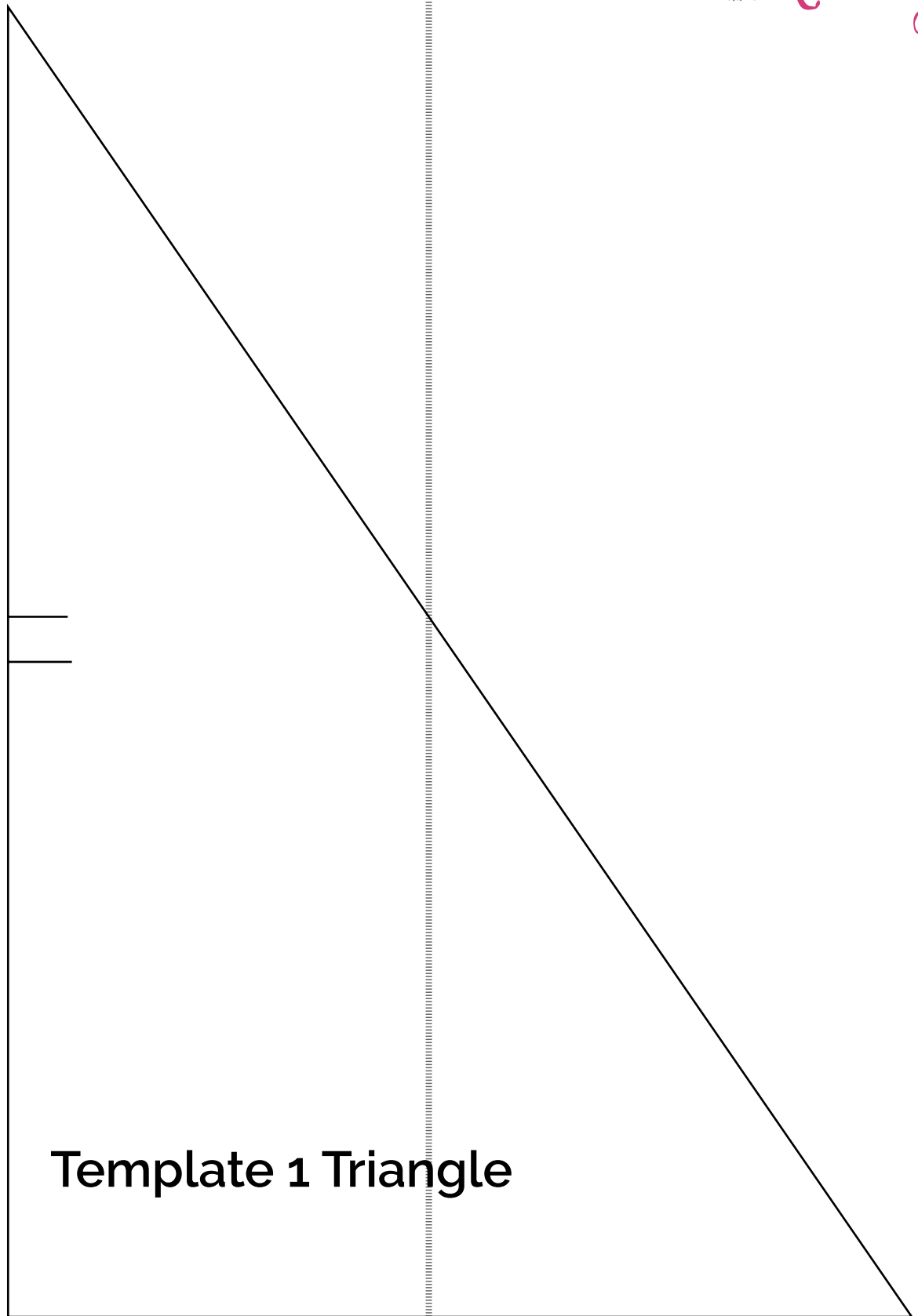


artgalleryfabrics.com

NOTE: While all possible care has been taken to ensure the accuracy of this pattern, We are not responsible for printing errors or the way in which individual work varies. Please read instructions carefully before starting the construction of this quilt. If desired, wash and iron your fabrics before starting to cut.

© 2017 Courtesy of Art Gallery Quilts LLC. All Rights Reserved.





Template 1 Triangle

Template 2 Triangle

