

Harmonious



Harmonious

QUILT DESIGNED BY MAUREEN CRACKNELL

Soulful

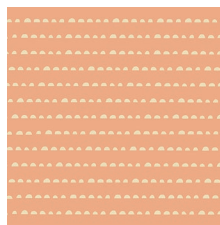
FABRICS DESIGNED BY MAUREEN CRACKNELL



WILD HEART



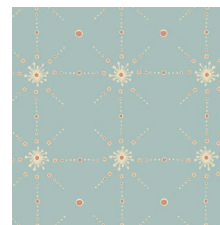
SOU-2630
MANDALA HARMONY VIVID



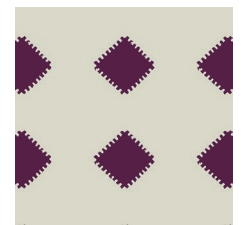
SOU-2631
STAY HUMBLE APRICOT



SOU-2632
FLORAL UNIVERSE PLUM



SOU-2633
FROM WITHIN CELESTE



SOU-2634
CLARITY MOMENTS STELLAR



SOU-2635
GRATEFUL JOY ORCHID



SOU-2636
CRYSTAL AWAKENING



SOU-2638
HERE & NOW PURPURITE



SOU-2639
DEEPEST PURPOSE INTENSE

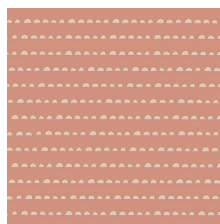


SOU-2640
BECOME ONE GREIGE

GENTLE HEART



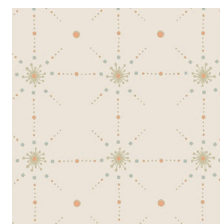
SOU-3630
MANDALA HARMONY SILENT



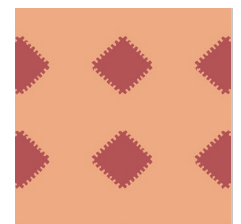
SOU-3631
STAY HUMBLE SUNSET



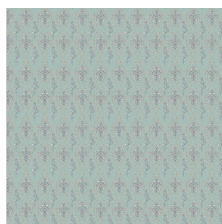
SOU-36302
FLORAL UNIVERSE AUBURN



SOU-3633
FROM WITHIN ALMOND



SOU-3634
CLARITY MOMENTS SOLAR



SOU-3635
GRATEFUL JOY CIELO



SOU-3637
LIGHT HEARTED



SOU-3638
HERE & NOW CALCITE



SOU-3639
DEEPEST PURPOSE SOFT



SOU-3640
BECOME ONE ANTIQUE



FEEL THE DIFFERENCE © 2017 Courtesy of Art Gallery Quilts LLC. All Rights Reserved.

Harmonious

FINISHED SIZE | 72" x 78"

FABRIC REQUIREMENTS

Fabric A	SOU-2630	1¼ yd.
Fabric B	SOU-2631	⅓ yd.
Fabric C	SOU-2632	½ yd.
Fabric D	SOU-2633	½ yd.
Fabric E	SOU-2634	¼ yd.
Fabric F	SOU-2638	1¼ yd.
Fabric G	SOU-2639	½ yd.
Fabric H	SOU-3631	¼ yd.
Fabric I	SOU-3633	⅝ yd.
Fabric J	SOU-3634	½ yd.
Fabric K	SOU-3639	¼ yd.
Fabric L	DEN-S-2008	2½ yd.
Fabric M	DEN-S-2004	⅙ yd.
Fabric N	PE-432	⅞ yd.
Fabric O	PE-401	½ yd.
Fabric P	PE-442	½ yd.
Fabric Q	PE-445	⅓ yd.
Fabric R	PE-418	⅝ yd.

BACKING FABRIC

SOU-2638 4 yds. *(Suggested)*

BINDING FABRIC

SOU-2638 (Fabric F) *(included)*

CUTTING DIRECTIONS

*¼" seam allowances are included.
WOF means width of fabric.*

Fabric A

Cut two (2) 6 ½" x 12 ½" rectangles
Cut eight (8) 6 ½" x 3 ½" rectangles
Cut four (4) 3 ½" x 12 ½" strips
Cut two (2) 4 ½" x 36 ½" strips
Cut three (3) 10 ½" x 5 ½" rectangles

Fabric B

Cut sixteen (16) 3 ½" perfect squares

Fabric C

Cut two (2) 6 ½" perfect squares
Cut eight (8) 3 ½" perfect squares

Fabric D

Cut two (2) 6 ½" perfect squares
Cut three (3) 10 ½" x 5 ½" rectangles

Fabric E

Cut three (3) 10 ½" x 5 ½" rectangles

Fabric F

Cut eight (8) 6 ½" perfect squares
Cut sixteen (16) 3 ½" perfect squares
Cut two (2) 4 ½" x 36 ½" strips

Fabric G

Cut sixteen (16) 3 ½" perfect squares
Cut four (4) 3 ⅞" perfect squares

Fabric H

Cut three (3) 10 ½" x 5 ½" rectangles

Fabric I

Cut eight (8) 6 ½" x 3 ½" rectangles
Cut eight (8) 3 ½" perfect squares
Cut two (2) 10 ½" x 5 ½" rectangles

Fabric J

Cut two (2) 6 ½" perfect squares
Cut eight (8) 6 ½" x 3 ½" rectangles

Fabric K

Cut four (4) 6 ½" perfect squares
Cut eight (8) 3 ½" perfect squares

Fabric L

Cut four (4) 6 ½" perfect squares
Cut eighteen (18) 6 ½" x 3 ½" rectangles
Cut sixteen (16) 3 ½" perfect squares
Cut twelve (12) 3 ⅞" perfect squares
Cut twenty-eight (8) 5 ½" perfect squares
Cut four (4) 4 ½" x 36 ½" strips
Cut eight (8) 2 ½" x 36 ½" strips
Cut one (1) 2 ½" x 10 ½" strip

Fabric M

Cut four (4) 1 ½" x 36 ½" strips

Fabric N

Cut twenty-four (24) 3 ½" perfect squares
Cut four (4) 4 ½" x 36 ½" strips

Fabric O

Cut sixteen (16) 3 ½" perfect squares

Fabric P

Cut twenty-four (24) 3 ½" perfect squares
Cut two (2) 6 ½" x 3 ½" rectangles

Fabric **Q**

Cut four (4) $3\frac{7}{8}$ " perfect squares

Fabric **R**

Cut eight (8) $6\frac{1}{2}$ " x $3\frac{1}{2}$ " rectangles

Cut twenty-four (24) $3\frac{1}{2}$ " perfect squares

CONSTRUCTION

Sew all rights sides together with $\frac{1}{4}$ " seam allowance.

- Begin by constructing the block pieces on by one, notice there are a total of four (4) block in the quilt and doubled, so repeat the quilt block instruction to get both blocks out of the way.
- Referencing the quilt cover lets start with the first block to the top working from left to right.
- Take two (2) $3\frac{1}{2}$ " x $12\frac{1}{2}$ " strips from Fabric **A** and four (4) $3\frac{1}{2}$ " perfect squares from Fabric **R**
- Place the squares faces to face on the ends on the strip and sew diagonally.
- Cut off excess fabric, open, and press.
- Repeat.



DIAGRAM 1

- Next take four (4) $6\frac{1}{2}$ " x $3\frac{1}{2}$ " rectangles from fabric **A** and eight (8) $3\frac{1}{2}$ " perfect squares from Fabric **R**
- Pair two (2) squares face to face to a rectangle and sew each square diagonally.
- There should be a total of four units resembling image below.



DIAGRAM 2

- Take four (4) $3\frac{1}{2}$ " perfect squares from fabric **N** and sew on each side of the unit above.



DIAGRAM 3

- Take two (2) $3\frac{7}{8}$ " perfect squares from fabric **L** and two (2) $3\frac{7}{8}$ " perfect squares from fabric **Q**.
- Place face to face and draw a line diagonally.
- Sew at a $\frac{1}{4}$ " away from line above and below.
- Then cut directly on the drawn line.
- There should be a total of four (4) HST.



DIAGRAM 4

- Begin to put the block together, sew each row together first



DIAGRAM 5

- For the next block take the $6\frac{1}{2}$ " perfect square from fabric **C** and $3\frac{1}{2}$ " perfect squares from fabric **N**
- Place each $3\frac{1}{2}$ " square to the corners of the larger square and sew diagonally, and cut off excess fabric.

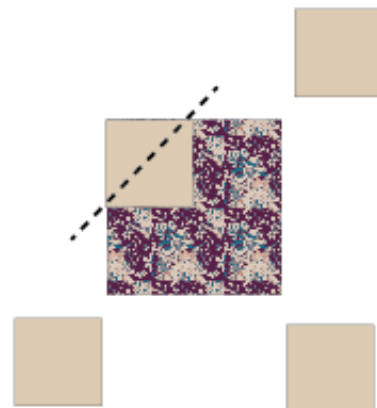


DIAGRAM 6

- Following take four (4) $6\frac{1}{2}$ " x $3\frac{1}{2}$ " rectangles from fabric **R** and eight (8) $3\frac{1}{2}$ " perfect squares from fabric **B**.
- Pair two (2) squares face to face to a rectangle and sew each square diagonally.

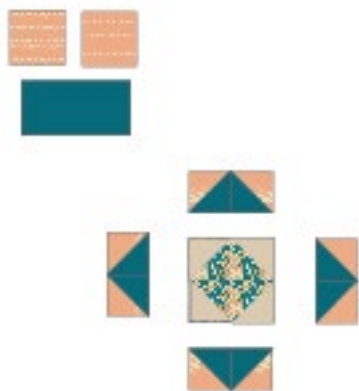


DIAGRAM 7

- Follow the same instructions but now using four (4) $6\frac{1}{2}$ " x $3\frac{1}{2}$ " rectangles from fabric **L** and eight (8) $3\frac{1}{2}$ " perfect squares from fabric **G**.



DIAGRAM 8

- Next take two (2) $3\frac{7}{8}$ " perfect squares of fabric **L**, and **G**
- Place face to face and draw a diagonal line.
- Sew at a $\frac{1}{4}$ " away from line above and below.
- Then cut directly on the drawn line.
- There should be a total of four (4) HST.



DIAGRAM 9

- To continue constructing this block take eight (8) $3\frac{1}{2}$ " perfect squares from fabric **O** and four (4) $3\frac{1}{2}$ " perfect squares from fabric **C**
- Now piece the block together sew rows first.



DIAGRAM 10

XX

- For the third block take the $6\frac{1}{2}$ " perfect square from fabric **D** and four (4) $3\frac{1}{2}$ " perfect squares from fabric **P**
- Place each $3\frac{1}{2}$ " square to the corners of the larger square and sew diagonally.
- Cut off excess fabric

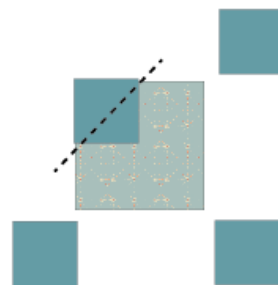


DIAGRAM 11

- Next take four (4) $6\frac{1}{2}$ " x $3\frac{1}{2}$ " rectangles from fabric **I** and eight (8) $3\frac{1}{2}$ " perfect squares from fabric **F**
- Pair two (2) squares face to face to a rectangle and sew each square diagonally.



DIAGRAM 12

- Next take four (4) $6\frac{1}{2}$ " perfect squares from fabric **F**, four (4) $3\frac{1}{2}$ " perfect squares from fabric **N**, and four (4) $3\frac{1}{2}$ " perfect squares from fabric **I**.
- Place one (1) square of each color with the $6\frac{1}{2}$ " perfect square.
- Sew each $3\frac{1}{2}$ " square on the diagonally opposite corner.
- Use diagram as a reference.

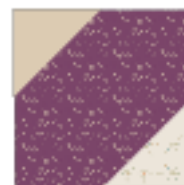
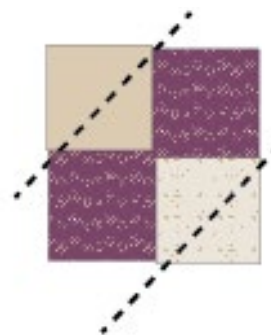


DIAGRAM 13

- To continue take four (4) $6\frac{1}{2}$ ' x $3\frac{1}{2}$ ' rectangles from fabric **L**
- Next piece block together remember to sew rows first.

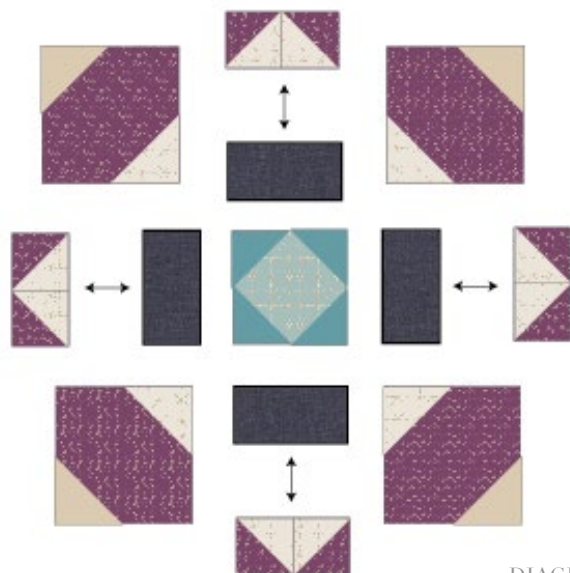


DIAGRAM 14

- For the last and fourth block take four (4) $6\frac{1}{2}$ ' x $3\frac{1}{2}$ ' rectangles from fabric **J**
- For one of the rectangles pair them up with two (2) $3\frac{1}{2}$ ' perfect squares from Fabric **P**
- For the next rectangle pair them up with two (2) $3\frac{1}{2}$ ' perfect squares from Fabric **L**
- Pair the squares face to face to the rectangle and sew each square diagonally.
- Cut off excess fabric, open, fold, press.



DIAGRAM 15

- For the next two (2) rectangles from fabric **J** pair them with a $3\frac{1}{2}$ ' square from fabric **P** and a $3\frac{1}{2}$ ' square from fabric **L**.
- Use the same instructions as above yet for each color sew on opposite side
- Use diagram as a reference

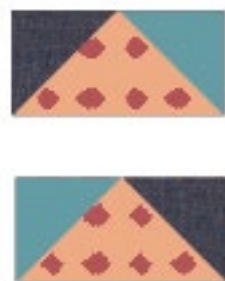


DIAGRAM 16

- XX
- Place those units aside next take one (1) $6\frac{1}{2}$ ' x $3\frac{1}{2}$ ' rectangle from fabric **P** and two (2) $3\frac{1}{2}$ ' perfect square from fabric **L**
 - Pair the squares face to face to the rectangle and sew each square diagonally.
 - Cut off excess fabric, open, fold, press.
 - Follow the same instructions now using $6\frac{1}{2}$ ' x $3\frac{1}{2}$ ' rectangle from fabric **L** and two (2) $3\frac{1}{2}$ ' perfect square from fabric **K**



DIAGRAM 17

- Next take one $3\frac{7}{8}$ ' perfect square from fabric **L** and one $3\frac{7}{8}$ ' perfect square from fabric **K**
- Place face to face and draw a diagonal line.
- Sew at a $\frac{1}{4}$ ' away from line above and below.
- Then cut directly on the drawn line.
- Follow the same instructions for a $3\frac{7}{8}$ ' perfect square from fabric **P**, and **L**.
- There should be a total of 4 HST.



DIAGRAM 18

- Next take two (2) $6\frac{1}{2}$ ' from fabric **L** and two (2) $3\frac{1}{2}$ ' perfect squares from fabric **P**
- Place the $3\frac{1}{2}$ ' perfect square face to face on a corner of the $6\frac{1}{2}$ ' square.
- Sew diagonally, cut off excess fabric, open, and press.



DIAGRAM 19

- Take the 6½' perfect square from fabric **J**.
- Next begin to assemble to block piece.
- Use diagram as a reference.

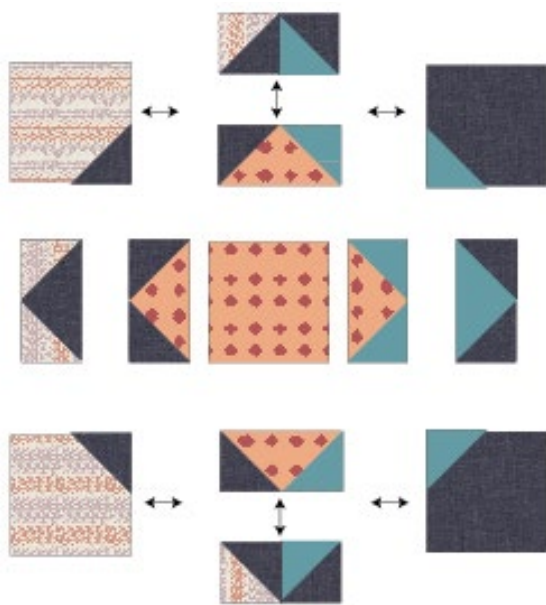


DIAGRAM 20

- The blocks should be all set, remember there should be a total of two (2) blocks of each design.
- Next step lets work on the middle section of the quilt which is the flying geese area.
- Take all three (3) 10½' x 5½' rectangles from fabrics **D, E, H, A** and also take the two (2) 10½' x 5½' rectangles from fabric **I**.
- Also grab the twenty-eight (28) 5½' perfect squares from fabric **L**.
- For each rectangle pair two (2) 5½' squares and sew each square diagonally one on each corner.
- There should be a total of fourteen (14) flying geese units.
- Take the one (1) 2½' x 10½' strip from fabric **L** as your also going to need this piece to assemble to middle section of the quilt.
- Begin to assemble use diagram and cover as a reference when sewing the flying geese together.



DIAGRAM 21

XX

- Continuing take the four (4) 4½' x 36½' strips from fabric **L**.
- Take two (2) of the strips and sew side by side creating a longer strip that would equal 72' in length.
- Repeat.
- Follow the same instructions with the eight (8) 2½' x 36½' strips from fabric **L**, the two (2) 4½' x 36½' strips from fabric **F, A**, the four (4) 1½' x 36½' strips from fabric **M**, and lastly the four (4) 1½' x 36½' strips from fabric **N**.
- Next step take the 1½' x 72½' strip from fabric **M** and place directly on top of the 4½' x 72½' strip from fabric **N** and center the 1½' strip and sew ¼' on the edges.

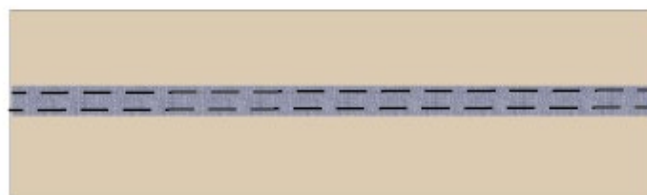


DIAGRAM 22

ASSEMBLING THE TOP

Sew all rights sides together with ¼" seam allowance. Press open.

- Referring to the Quilt Assembly Diagram and noting placement and orientation, sew each row together.



DIAGRAM 23

QUILT ASSEMBLY

Sew rights sides together.

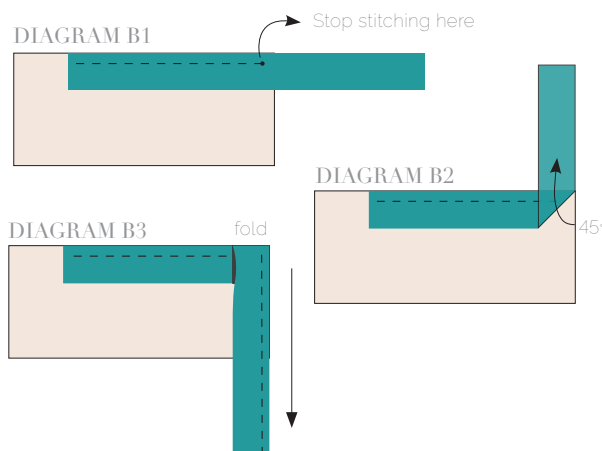
- Place BACKING FABRIC on a large surface wrong side up. Stretch it with masking tape against that surface.
- Place BATTING on top of backing fabric.
- Place TOP on top of the batting with right side facing up. Smooth away wrinkles using your hands.
- Pin all layers together and baste with basting thread, using long stitches. You can also use safety pins to join the layers.
- Machine or hand quilt starting at the center and working towards the corners. Remember that quilting motifs are a matter of personal preference. Have fun choosing yours!
- After you finished, trim excess of any fabric or batting, squaring the quilt to proceed to bind it.

BINDING

Sew rights sides together.

- Cut enough strips $1\frac{1}{2}$ ' wide by the width of the fabric **F** to make a final strip 310' long. Start sewing the binding strip in the middle of one of the sides of the quilt, placing the strip right side down and leaving an approximated 5' tail. Sew with $\frac{1}{4}$ ' seam allowance (using straight stitch), aligning the strip's raw edge with the quilt top's raw edge.
- Stop stitching $\frac{1}{4}$ ' before the edge of the quilt (**DIAGRAM B1**). Clip the threads. Remove the quilt from under the machine presser foot. Fold the strip in a motion of 45° and upward, pressing with your fingers (**DIAGRAM B2**). Hold this fold with your finger, bring the strip down in line with the next edge, making a horizontal fold that aligns with the top edge of the quilt (**DIAGRAM B3**). Start sewing at $\frac{1}{4}$ ' of the border, stitching all the layers. Do the same in the four corners of the quilt.
- Stop stitching before you reach the last 5 or 6 inches. Cut the threads and remove the quilt from under the machine presser foot. Lay the loose ends of the binding flat along the quilt edge, folding the ends back on themselves where they meet. Press them together to form a crease. Using this crease as the stitching line, sew the two open ends of the binding with right sides together (you can help yourself marking with a pencil if the crease is difficult to see).
- Trim seam to $\frac{1}{4}$ ' and press open. Complete the sewing. Turn binding to back of the quilt, turn raw edge inside and stitch by hand using blind stitch.

XXXXXXXXXXXXXXXXXXXXXXXXXXXXXXXXXXXX



artgalleryfabrics.com

NOTE: While all possible care has been taken to ensure the accuracy of this pattern, We are not responsible for printing errors or the way in which individual work varies. Please read instructions carefully before starting the construction of this quilt. If desired, wash and iron your fabrics before starting to cut.

© 2017 Courtesy of Art Gallery Quilts LLC. All Rights Reserved.