

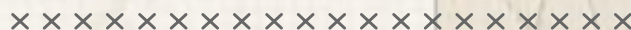


Faint Charms

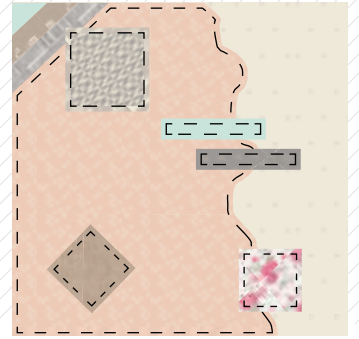


capsules
by AGF

FREE PATTERN



Faint Charms

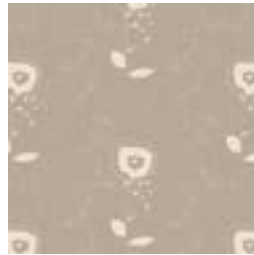


Le Vintage Chic⁺

FABRICS DESIGNED BY AGF STUDIO



CAP-VC-5000
NOSTALGIC ROMANCE



CAP-VC-5001
PICTURESQUE BLOOM



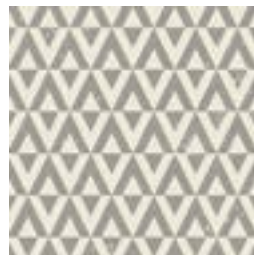
CAP-VC-5002
VINTAGE FLORETS



CAP-VC-5003
FAINT CHARMS ANTIQUE



CAP-VC-5004
WONDERLUST FIELD



CAP-VC-5005
RUSTIC DIAMONDS



CAP-VC-5006
AMOROUS MANUSCRIPT



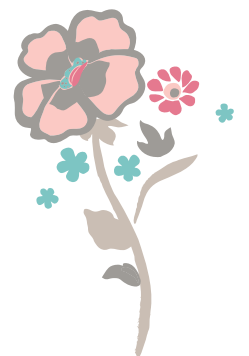
CAP-VC-5007
TENDER GRID



CAP-VC-5008
LABYRINTH IMPRESSION



CAP-VC-5009
NOVA MEADOW



FABRIC REQUIREMENTS

Fabric A	CAP-VC-5003	7/8 yd.
Fabric B	CAP-VC-5000	1/8 yd.
Fabric C	PE-451	1/8 yd.
Fabric D	CAP-VC-5007	1/2 yd.
Fabric E	CAP-VC-5008	1/6 yd.
Fabric F	CAP-VC-5005	1/6 yd.
Fabric G	DEN-L-4000	1/8 yd.
Fabric H	PRE- 814	1/8 yd.
Fabric I	CAP-VC-5001	1/8 yd.

BACKING FABRIC
CAP-VC-5003- (Included)

Additional Materials:

Steam-A-Seam 2 Double Stick Fusible Tape

Embroidery Thread (optional)

CUTTING DIRECTIONS

1/4" seam allowances are included.
 WOF means width of fabric.

- One (1) 16 1/2" perfect square from Fabric **A**
- One (1) 16 1/2" perfect square from Fabric **D**
- One (1) 8 1/2"x 1 1/2" strip from Fabric **E**
- One (1) 4" perfect square from Fabric **F**
- One (1) 3 1/2" perfect square from Fabric **G**
- One (1) 8 1/2"x 1 3/4" strip from Fabric **I**
- One (1) 2 1/2" perfect square from Fabric **B**
- One (1) 8 1/2"x 2" strip from Fabric **C**
- One (1) 4 1/2"x 1" strips from Fabric **C & H**

CONSTRUCTION

Sew all rights sides together with 1/4" seam allowance.

- Start by pairing the strips from fabrics **E, I, C** right sides facing.
- After having the strips sewn together, take the 16 1/2" perfect square piece from Fabric **D** and measure from the left side, 5 1/2" height and 5 1/2" width, draw a diagonal line so you know where the strip piece will be sewn. (Diagram 1)

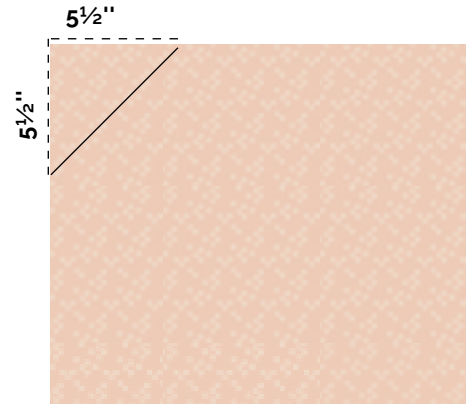


DIAGRAM 1

- Place the strip pieces facing right sides together and sew.
- You will now have to trim the strip piece.

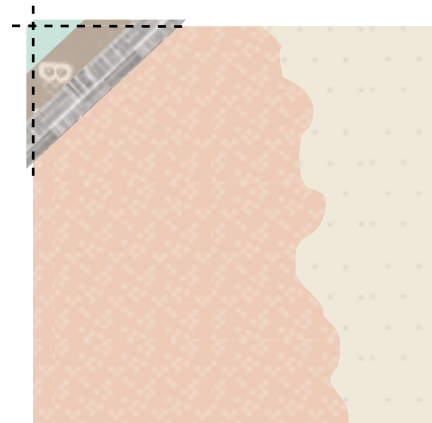


DIAGRAM 2

- Next take the template piece and place over the sewn piece from above
- Cut out tracing the template all around.
- Before you sew the applique, feel free to create a quilt design on your Fabric A calculating the amount of space you will have when you place your applique piece.
- Now take Fabric A 16½ perfect square and pair it right sides facing up with the cut out piece wrong side facing down.
- Before sewing, make sure you place in between the pieces, the Steam a Seam Fusible Tape.
- Once you are done sewing the pieces together, add your decorative stitches
- Stitch about 1/8" to 1/4" away from the edge to allow the edges of your patches to fray naturally.

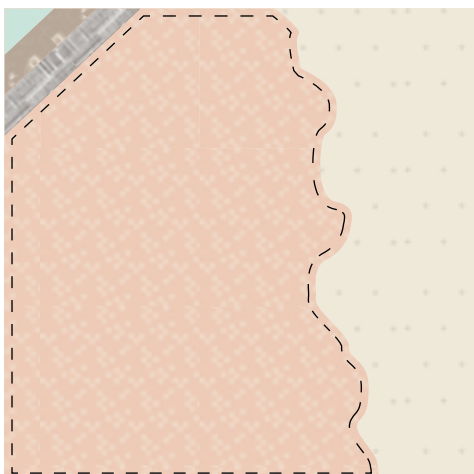


DIAGRAM 3

- Next take Fabric F 4½ perfect square and iron fusible fleece wrong side of your front piece.
- Now, place it 2 inches apart top and left side of the applique piece, wrong side facing down and handsew about ⅛ away from the edge to allow the edges of your patches to fray naturally.
- Now, take the Fabric G perfect square, rotate it 45 degree and place it 1 inch away from the bottom part of your applique, and 2½ away from the left side.
- Repeat same process as the previous patchy square.

- Now, take a Fabric C strip piece and place it 5½ inches from the top and 4½ from the right side of your pillow cover.
- Repeat same sewing process from the other patchy squares.
- Then, take a Fabric H strip piece and place it 7 inches from the top and 2½ from the right side of your pillow.
- Now take a Fabric B 2½ perfect square and place it 4 inches away from the bottom right part of your pillow cover and 2 inches away from the right side.
- Repeat same sewing process from the other patchy squares.

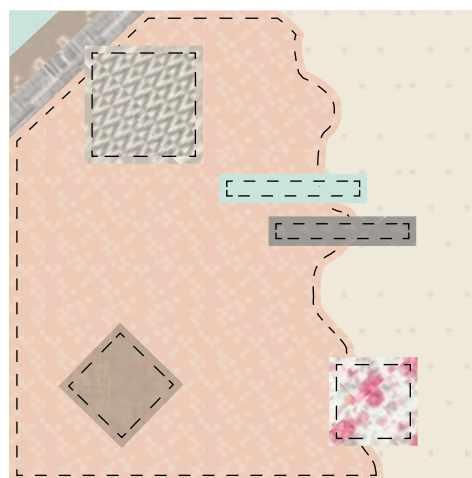


DIAGRAM 4

CREATING THE BACK PILLOW

Sew all rights sides together with ¼" seam allowance. Press open.

- To make a envelope back for your pillow take both 11' x 17' rectangles and fold one 17' side on each rectangle in 1/2' and press and then fold another 1/2' and press.
- Top stitch as close to the edge as possible.
- Place rectangles right side together on top of each other to the front of your pillow and stitch all the way around your pillow at ¼' seam allowance.
- Clip corners at seam allowance and flip piece to the right side of the fabric.
- Fill pillow with a 16" x 16" pillow form and enjoy!



artgalleryfabrics.com

NOTE: While all possible care has been taken to ensure the accuracy of this pattern, We are not responsible for printing errors or the way in which individual work varies.
Please read instructions carefully before starting the construction of this quilt. If desired, wash and iron your fabrics before starting to cut.

© 2017 Courtesy of Art Gallery Quilts LLC. All Rights Reserved.

TEMPLATE

T

T T T

TEMPLATE





TEMPLATE



