



## Granny Block 19







# Quilt BLOCK collection

BLOCK DESIGNED BY AGF STUDIO AGFstudio

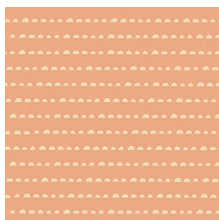
## Soulful

FABRICS DESIGNED BY MAUREEN CRACKNELL

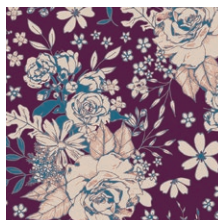
WILD HEART



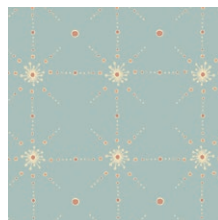
SOU-2630  
MANDALA HARMONY VIVID



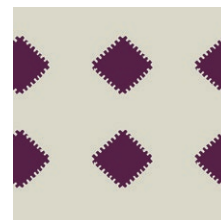
SOU-2631  
STAY HUMBLE APRICOT



SOU-2632  
FLORAL UNIVERSE PLUM



SOU-2633  
FROM WITHIN CELESTE



SOU-2634  
CLARITY MOMENTS STELLAR



SOU-2635  
GRATEFUL JOY ORCHID



SOU-2636  
CRYSTAL AWAKENING



SOU-2638  
HERE & NOW PURPURITE



SOU-2639  
DEEPEST PURPOSE INTENSE

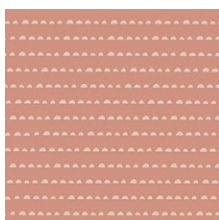


SOU-2640  
BECOME ONE GREIGE

GENTLE HEART



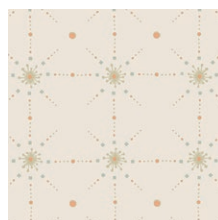
SOU-3630  
MANDALA HARMONY SILENT



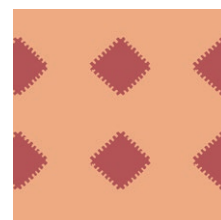
SOU-3631  
STAY HUMBLE SUNSET



SOU-36302  
FLORAL UNIVERSE AUBURN



SOU-3633  
FROM WITHIN ALMOND



SOU-3634  
CLARITY MOMENTS SOLAR



SOU-3635  
GRATEFUL JOY CIELO



SOU-3637  
LIGHT HEARTED



SOU-3638  
HERE & NOW CALCITE



SOU-3639  
DEEPEST PURPOSE SOFT



SOU-3640  
BECOME ONE ANTIQUE



FINISHED SIZE | 12' × 12'

## CUTTING DIRECTIONS

- **Fabric A- SOU-2638-** One (1) 3 1/2' squares
- **Fabric B- SOU-2631-** Four (4) 3 1/2' squares
- **Fabric- C- SOU-2630-** Four (4) 3 1/2' squares
- **Fabric D- SOU-2633 -** Four (4) 3 1/2' squares
- **Fabric E- PE-408 -** Twelve (12) 3 1/2' squares

## CONSTRUCTION

*Sew all rights sides together with 1/4" seam allowance.*

- Place your 3 1/2' squares out in front of you following Diagram 1. Chain piece your rows together and press seams in alternating directions!
- Sew your rows together.

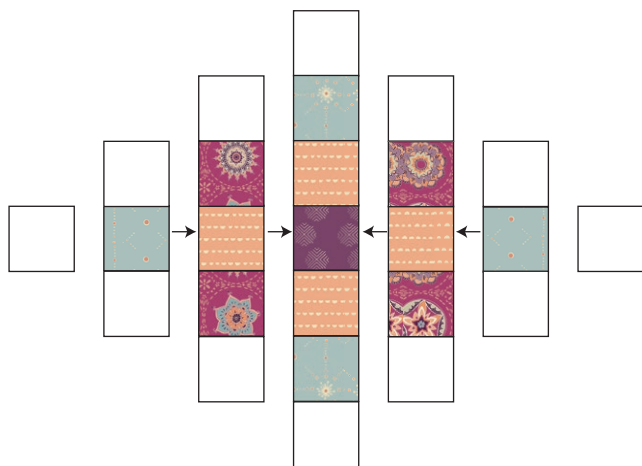


DIAGRAM 1

- Take your last two white squares and find the center by gently folding in half. Repeat this step with your sewn piece.
- Pin your white squares to your sewn piece lining up crease marks. Sew blocks to your piece.

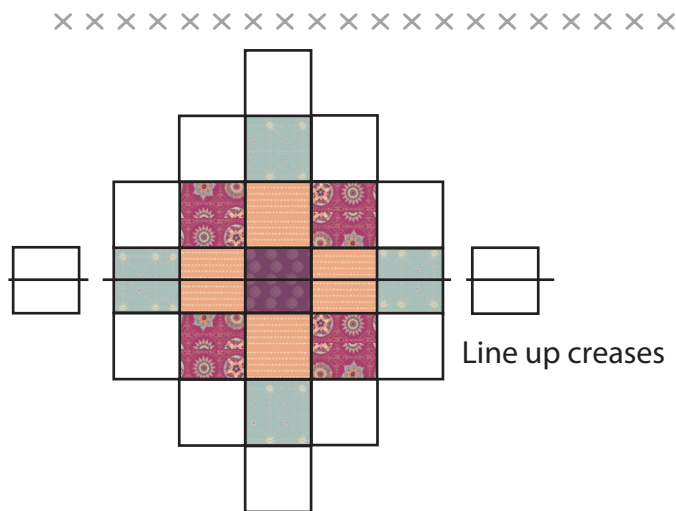


DIAGRAM 2

- Last step is to square up your block. Make sure to leave 1/4' seam allowance on all sides of your block.

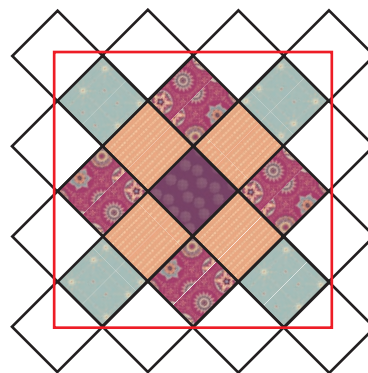


DIAGRAM 3



[artgalleryfabrics.com](http://artgalleryfabrics.com)

*NOTE: While all possible care has been taken to ensure the accuracy of this pattern, We are not responsible for printing errors or the way in which individual work varies. Please read instructions carefully before starting the construction of this quilt. If desired, wash and iron your fabrics before starting to cut.*