

WARM
+ Horizonz

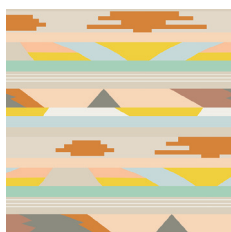


WARM Horizonz



FABRICS DESIGNED BY APRIL RHODES

MESA



AZA-6880
MESA MOJAVE



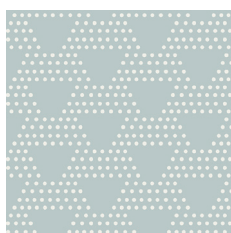
AZA-6881
SCATTER APRICOT



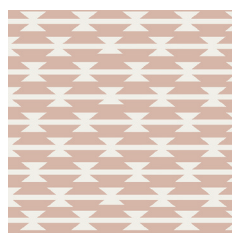
AZA-6882
PAÑO SPRING



AZA-6883
OJOS SMOKE



AZA-6884
STRATA MIST

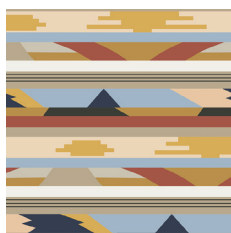


AZA-6886
TOMAHAWK STRIPE BLUSH

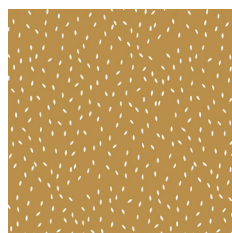


AZA-6887
ARID HORIZON SUN

CAÑON



AZA-7880
MESA GRANDE



AZA-7881
SCATTER WOOD



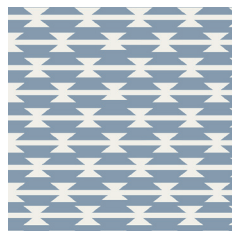
AZA-7882
PAÑO STONE



AZA-7883
OJOS FLAME



AZA-7885
CLAY SUNDOT DUSK



AZA-7886
TOMAHAWK STRIPE CLOUD



AZA-7887
ARID HORIZON EARTH



FEEL THE DIFFERENCE © 2017 Courtesy of Art Gallery Quilts LLC. All Rights Reserved.

WARM *Horizonz*

FINISHED SIZE | 18" x 18"

FABRIC REQUIREMENTS

Fabric A	AZA-7881	1/8 yd.
Fabric B	AZA-6881	1/8 yd.
Fabric C	AZA-7882	5/8 yd.
Fabric D	AZA-7883	1/8 yd.
Fabric E	AZA-7887	1/8 yd.
Fabric F	DEN-D-5000	1/8 yd.

BACKING FABRIC

AZA-7882 (Fabric **C**) (*included*)

CUTTING DIRECTIONS

1/4" seam allowances are included.
WOF means width of fabric.

Four (4) 3 1/2" perfect squares from Fabric **A, B, D**

Four (4) 6 1/2" x 3 1/2" rectangles from Fabric **B**

Four (4) 6 1/2" perfect squares from Fabric **C**

Eight (8) 3 1/2" perfect squares from Fabric **C**

Two (2) 18" x 12" rectangles from Fabric **C** (*backing*)

Two (2) 6 1/2" x 3 1/2" rectangles from Fabric **E**

Four (4) 6 1/2" x 3 1/2" rectangles from Fabric **F**

CONSTRUCTION

Sew all rights sides together with 1/4" seam allowance.
HST means Half Square Triangles.

- To begin take the 6 1/2" perfect squares from Fabric **C** and the 3 1/2" perfect squares from Fabric **A, B**
- Place the 3 1/2" perfect square the corners of the 6 1/2" perfect square and sew across diagonally.
- Use cover and diagram as a reference.

XXXXXXXXXXXXXXXXXXXXXXXXXXXXXXXXXXXX



DIAGRAM 1

- Repeat three (3) more times.
- Cut of excess fabric.
- Next take the 6 1/2" x 3 1/2" rectangles from Fabric **B** and assign two (2) 3 1/2" perfect squares from Fabric **C** to each rectangle.
- Place on each side then sew diagonally.

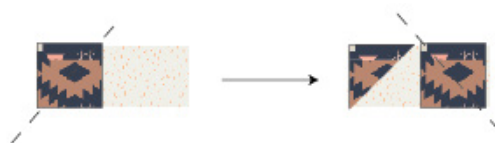
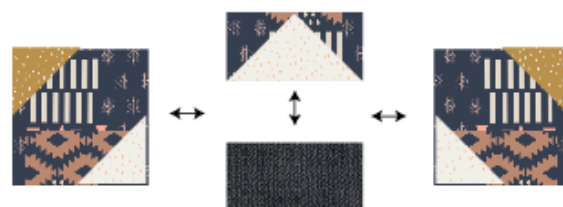


DIAGRAM 2

- Repeat three (3) more times.
- Next take both the 6 1/2" x 3 1/2" rectangles from Fabric **E** and assign two (2) 3 1/2" perfect squares from Fabric **D** to each rectangle.
- Follow the same construction method as previously mentioned.

ASSEMBLING THE TOP

- To continue, arrange the blocks accordingly.
- Use diagrams as a reference.



- Repeat

DIAGRAM 3

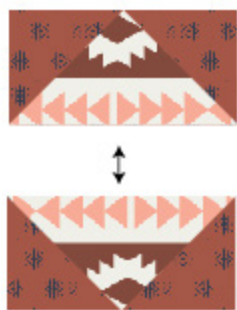


DIAGRAM 3



DIAGRAM 4

CREATING THE BACK PILLOW

Sew all rights sides together with $\frac{1}{4}$ " seam allowance. Press open.

- To make a envelope back for your pillow take both 18" x 12" rectangles and fold one 12" side on each rectangle in $\frac{1}{2}$ " and press and then fold another $\frac{1}{2}$ " and press.
- Top stitch as close to the edge as possible.
- Place rectangles right side together on top of each other to the front of your pillow and stitch all the way around your pillow at $\frac{1}{4}$ " seam allowance.
- Clip corners at seam allowance and flip piece to the right side of the fabric.
- Fill pillow with a 18" x 18" pillow form and enjoy!

XXXXXXXXXXXXXXXXXXXXXXXXXXXXXXXXXXXX



artgalleryfabrics.com

NOTE: While all possible care has been taken to ensure the accuracy of this pattern, We are not responsible for printing errors or the way in which individual work varies. Please read instructions carefully before starting the construction of this quilt. If desired, wash and iron your fabrics before starting to cut.

© 2015 Courtesy of Art Gallery Quilts LLC. All Rights Reserved.