

featuring *INDIE BOHEME*



# Boheme *Stripes*





# Boheme *Stripes*



Pat Bravo

# INDIE *Bohème*

FABRICS DESIGNED BY PAT BRAVO



COLOR OPTION

ROMANTIC BOUDOIR



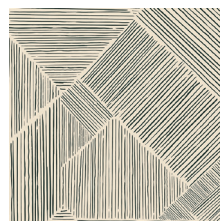
IBH-64200  
GITAN PARADIS PEARL



IBH-64201  
BRIEF MEMENTOS PINK



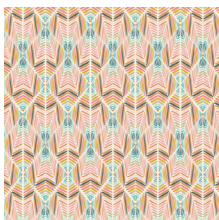
IBH-64202  
BOHO QUEST NIGHT



IBH-64203  
TROUVAILLE ROUTES SAND



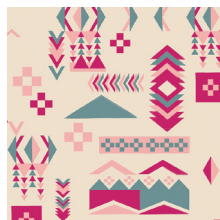
IBH-64204  
VIE DE BOHÈME SUNRISE



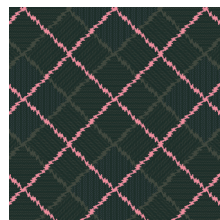
IBH-64205  
ETERNAL SERENITY ROSE



IBH-64206  
BLOOMING SOUL LAUREL



IBH-64207  
WOODBLOCK SPIRIT CRISP



IBH-64208  
APATITE CRYSTAL

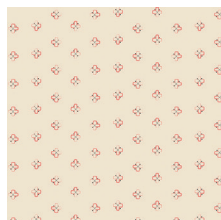


IBH-64209  
BOHEMIAN PATCHWORK

ANTIQUE DRESSER



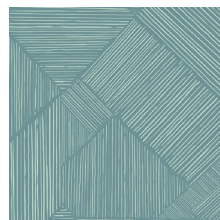
IBH-74200  
BLOMMA GARDEN GOLDEN



IBH-74201  
BRIEF MEMENTOS LINEN



IBH-74202  
BOHO QUEST DAY



IBH-74203  
TROUVAILLE ROUTES OCEAN



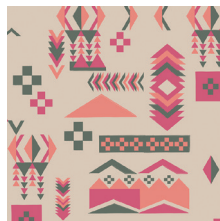
IBH-74204  
VIE DE BOHÈME SUNSET



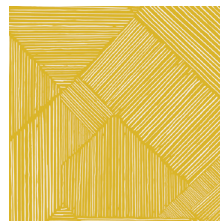
IBH-74205  
ETERNAL SERENITY CORAL



IBH-74206  
BLOOMING SOUL PLUM



IBH-74207  
WOODBLOCK SPIRIT WARM



IBH-74210  
TROUVAILLE ROUTES SUN



IBH-74211  
FOLK PLEATS



FEEL THE DIFFERENCE © 2017 Courtesy of Art Gallery Quilts LLC. All Rights Reserved.

# Boheme Stripes

FINISHED SIZE | 20' x 14'

## FABRIC REQUIREMENTS

Fabric <b>A</b>	IBH-64202	F8
Fabric <b>B</b>	IBH-64203	F8
Fabric <b>C</b>	IBH-64201	F8
Fabric <b>D</b>	IBH-64205	F8
Fabric <b>E</b>	IBH-64207	F8
Fabric <b>F</b>	IBH-64208	F8
Fabric <b>G</b>	IBH-64209	¾yd
Fabric <b>H</b>	IBH-74202	F8
Fabric <b>I</b>	IBH-74203	F8
Fabric <b>J</b>	IBH-74204	F8
Fabric <b>K</b>	IBH-74205	F8
Fabric <b>L</b>	IBH-74206	F8
Fabric <b>M</b>	IBH-74210	F8
Fabric <b>N</b>	IBH-74211	F8
Fabric <b>O</b>	DEN-S-2000	F8

### BACKING FABRIC

Fabric **G** (*fabric included*)

## CUTTING DIRECTIONS

*¼" seam allowances are included.  
WOF means width of fabric.*

One (1) 2½" x 12½" strip from Fabric **A**.

One (1) 1½' x 2½' rectangle from Fabric **A**.

One (1) 2½' x 6½' strip from Fabric **B**.

One (1) 2½' x 3½' rectangle from Fabric **C**.

One (1) 1½' x 2½' rectangle from Fabric **D**.

One (1) 8½' x 2½' strip Fabric **E**

One (1) 1½' x 5½' strip from Fabric **F**.

One (1) 2½' x 7½' strip from Fabric **G**.

One (1) 1½' x 5½' strip from Fabric **G**.

Two (2) 14½' x 12' rectangles from Fabric **G**.

One (1) 3½" x 12½" strip from Fabric **H**.

One (1) 1½' x 8½' strip from Fabric **I**.

One (1) 1½' x 12½' strip from Fabric **J**.

One (1) 2½' x 12½' strip from Fabric **J**.

One (1) 2½' x 5½' strip from Fabric **K**.

One (1) 2½' x 6½' strip Fabric **K**.

One (1) 1½' x 2½' rectangle from Fabric **K**.

One (1) 2½' x 12½' strip from Fabric **L**.

One (1) 2½' x 8½' strip from Fabric **M**.

One (1) 2½' x 4½' rectangle from Fabric **N**.

Two (2) 1½' x 20½' strips from Fabric **O**.

## CONSTRUCTION

*Sew all rights sides together with ¼" seam allowance.*

- To begin sew all strip pieces together.
- Take the 2½' x 5½' strip from Fabric **K** and sew vertically to the 2½' x 7½' strip from Fabric **G**
- Next take the 1½' x 5½' strip from Fabric **F** and sew vertically to the 1½' x 5½' strip from Fabric **G** then directly on the bottom of this unit sew the 1½' x 2½' rectangle from Fabric **K**.
- Take the 2½' x 8½' strip from Fabric **M** and sew vertically to the 2½' x 4½' rectangle from Fabric **N**.
- Following take the 8½' x 2½' strip Fabric **E** and sew vertically to the 2½' x 3½' rectangle from Fabric **C**
- Take the 2½' x 6½' strip from Fabric **B** and sew vertically to the 2½' x 6½' strip Fabric **K**.
- All the patchy strips should now be sewn together.



DIAGRAM 1

- Next step is to sew all strip pieces together with the remaining fabric pieces.
- Use the diagram as a reference when sewing the strips.



DIAGRAM 2

- Next take the two (2)  $1\frac{1}{2}' \times 20\frac{1}{2}'$  strips from Fabric O and sew strips on the bottom and top of the unit.



DIAGRAM 3

## CREATING THE BACK PILLOW

*Sew all rights sides together with  $\frac{1}{4}$ " seam allowance. Press open.*

- To make a envelope back for your pillow take both  $14\frac{1}{2}' \times 12'$  rectangles and fold one  $12'$  side on each rectangle in  $\frac{1}{2}'$  and press and then fold another  $\frac{1}{2}'$  and press.
- Top stitch as close to the edge as possible.
- Place rectangles right side together on top of each other to the front of your pillow and stitch all the way around your pillow at  $\frac{1}{4}'$  seam allowance.
- Clip corners at seam allowance and flip piece to the right side of the fabric.
- Fill pillow with a  $20' \times 14'$  pillow form and enjoy!



[artgalleryfabrics.com](http://artgalleryfabrics.com)

NOTE: While all possible care has been taken to ensure the accuracy of this pattern, We are not responsible for printing errors or the way in which individual work varies. Please read instructions carefully before starting the construction of this quilt. If desired, wash and iron your fabrics before starting to cut.

© 2017 Courtesy of Art Gallery Quilts LLC. All Rights Reserved.



# Happy Sewing

#PatBravoDesign



To see more patterns, fabrics  
and lots of inspiration visit:

[patbravo.com](http://patbravo.com)

NOTE: While all possible care has been taken to ensure the accuracy of this pattern, we are not responsible for printing errors or the way in which individual work varies. Please read instructions carefully before starting the construction of this quilt. If desired, wash and iron your fabrics before starting to cut.

© 2016 Courtesy of Pat Bravo All Rights Reserved.