

Featuring *INDIE BOHEME*



# Lilou





# INDIE Bohème

FABRICS DESIGNED BY PAT BRAVO



COLOR OPTION

ROMANTIC BOUDOIR



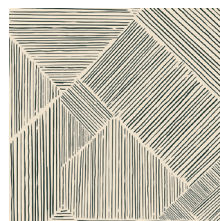
IBH-64200  
GITAN PARADIS PEARL



IBH-64201  
BRIEF MEMENTOS PINK



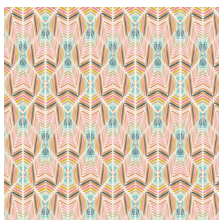
IBH-64202  
BOHO QUEST NIGHT



IBH-64203  
TROUVAILLE ROUTES SAND



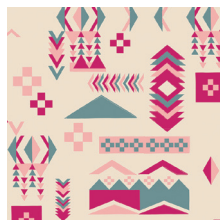
IBH-64204  
VIE DE BOHÈME SUNRISE



IBH-64205  
ETERNAL SERENITY ROSE



IBH-64206  
BLOOMING SOUL LAUREL



IBH-64207  
WOODBLOCK SPIRIT CRISP



IBH-64208  
APATITE CRYSTAL

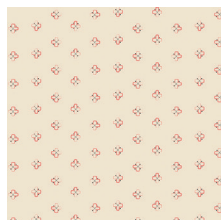


IBH-64209  
BOHEMIAN PATCHWORK

ANTIQUE DRESSER



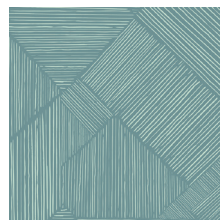
IBH-74200  
BLOMMA GARDEN GOLDEN



IBH-74201  
BRIEF MEMENTOS LINEN



IBH-74202  
BOHO QUEST DAY



IBH-74203  
TROUVAILLE ROUTES OCEAN



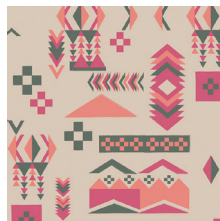
IBH-74204  
VIE DE BOHÈME SUNSET



IBH-74205  
ETERNAL SERENITY CORAL



IBH-74206  
BLOOMING SOUL PLUM



IBH-74207  
WOODBLOCK SPIRIT WARM



IBH-74210  
TROUVAILLE ROUTES SUN



IBH-74211  
FOLK PLEATS



FEEL THE DIFFERENCE © 2017 Courtesy of Art Gallery Quilts LLC. All Rights Reserved.



FINISHED SIZE | 15' x 7'

## FABRIC REQUIREMENTS

Fabric <b>A</b>	IBH-74202	F8
Fabric <b>B</b>	IBH-74204	F8
Fabric <b>C</b>	IBH-64203	F8
Fabric <b>D</b>	IBH-74205	F8
Fabric <b>E</b>	IBH-74210	F8
Fabric <b>F</b>	PE-420	F8
Fabric <b>G</b>	PE-452	F8
Fabric <b>H</b>	PE-463	F8
Fabric <b>I</b>	DEN-L-4000	FQ

### LINING FABRIC

Fabric **I** (Included)

### Additional Materials

- 15' Zipper
- Fusible Fleece

## CUTTING DIRECTIONS

*1/4" seam allowances are included.  
WOF means width of fabric.*

One (1) template A from fabric **A**.

One (1) 15½' x 7½' rectangle from Fabric **B**.

One (1) 7½' x 1½' strip from Fabrics **B, C, D, E, F, H**.

One (1) template B from Fabric **G**.

Two (2) 15½' x 7½' rectangles from Fabric **H**.

## CONSTRUCTION

*Sew all rights sides together with 1/4" seam allowance.*

- Take Template A from Fabric **A**, and Template B from Fabric **G**.
- Join them following Diagram 1.



DIAGRAM 1

- Join strips from fabrics **B, C, D, E, F, H** to the previous block.
- **B > C > F > Block > D > H > E.**
- Quilt as desired.



DIAGRAM 2

- Next step is to attach the zipper.
- First open zipper then place on the top edge of the front pieced cover and the back cover.

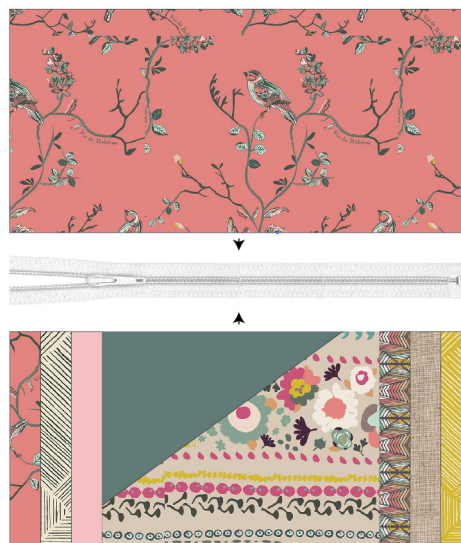


DIAGRAM 3

- Sew the 15½' x 7½' rectangles of fabric **I** on the other side of the zipper, as this will be the lining.

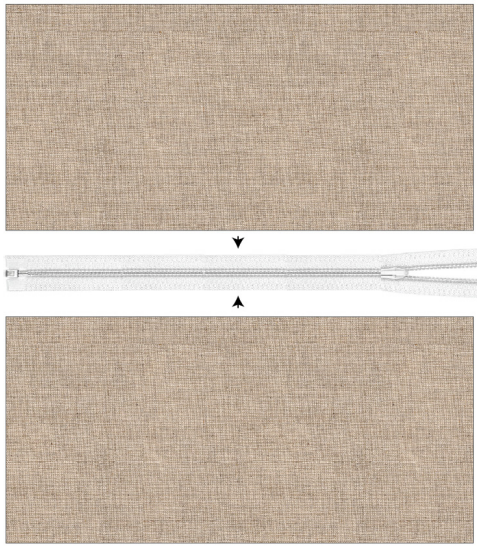


DIAGRAM 4

- Once the front and back covers and the lining pieces are sewn onto the zipper, make sure the zipper is open.
- Place the lining pieces face to face and pin them.
- Place the cover pieces face to face and pin them.
- Make a stitch all around the big rectangle making sure to leave a small opening in the lining to turn the clutch to the right side.

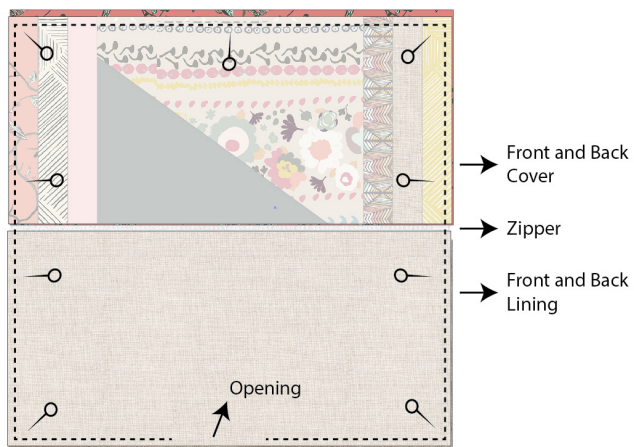


DIAGRAM 5

- Turn the clutch to the right side though the small opening.
- Hand stitch the small opening.
- Press and enjoy!



[artgalleryfabrics.com](http://artgalleryfabrics.com)

NOTE: While all possible care has been taken to ensure the accuracy of this pattern, We are not responsible for printing errors or the way in which individual work varies. Please read instructions carefully before starting the construction of this quilt. If desired, wash and iron your fabrics before starting to cut.

© 2017 Courtesy of Art Gallery Quilts LLC. All Rights Reserved.



Template A



Template B

The image features a solid yellow vertical bar on the left side. To its right is a large, light gray triangular shape with a black outline. The triangle is oriented with its right angle at the bottom-left corner. The text "Template B" is centered within the lower portion of this triangle.

# Happy Sewing

#PatBravoDesign



To see more patterns, fabrics  
and lots of inspiration visit:

[patbravo.com](http://patbravo.com)

NOTE: While all possible care has been taken to ensure the accuracy of this pattern, we are not responsible for printing errors or the way in which individual work varies. Please read instructions carefully before starting the construction of this quilt. If desired, wash and iron your fabrics before starting to cut.

© 2017 Courtesy of Pat Bravo All Rights Reserved.