

featuring *INDIE BOHEME*



# Delilah



Stitching

Cutting

Stitching

# Delilah



## INDIE Bohème

FABRICS DESIGNED BY PAT BRAVO



COLOR OPTION

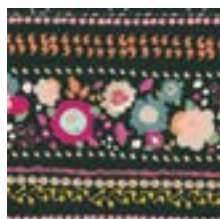
ROMANTIC BOUDOIR



IBH-64200  
GITAN PARADIS PEARL



IBH-64201  
BRIEF MEMENTOS PINK



IBH-64202  
BOHO QUEST NIGHT



IBH-64203  
TROUVAILLE ROUTES SAND



IBH-64204  
VIE DE BOHÈME SUNRISE



IBH-64205  
ETERNAL SERENITY ROSE



IBH-64206  
BLOOMING SOUL LAUREL



IBH-64207  
WOODBLOCK SPIRIT CRISP



IBH-64208  
APATITE CRYSTAL



IBH-64209  
BOHEMIAN PATCHWORK

ANTIQUÉ DRESSER



IBH-74200  
BLOMMA GARDEN GOLDEN



IBH-74201  
BRIEF MEMENTOS LINEN



IBH-74202  
BOHO QUEST DAY



IBH-74203  
TROUVAILLE ROUTES OCEAN



IBH-74204  
VIE DE BOHÈME SUNSET



IBH-74205  
ETERNAL SERENITY CORAL



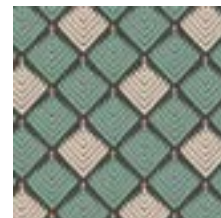
IBH-74206  
BLOOMING SOUL PLUM



IBH-74207  
WOODBLOCK SPIRIT WARM



IBH-74210  
TROUVAILLE ROUTES SUN



IBH-74211  
FOLK PLEATS



# Delilah

FINISHED SIZE | 9½' × 7'

## FABRIC REQUIREMENTS

Fabric A	IBH-64209	¼ yd.
Fabric B	DEN-L-4000	⅛ yd.
Fabric C	IBH-64202	⅛ yd.
Fabric D	IBH-64203	⅛ yd.
Fabric E	IBH-74205	⅛ yd.
Fabric F	IBH-64207	⅛ yd.
Fabric G	IBH-74211	⅛ yd.
Fabric H	PE-463	⅛ yd.
Fabric I	IBH-74206	⅛ yd.
Fabric J	PE-427	⅛ yd.

**BACKING FABRIC**  
¼ yd. *(suggested fabric)*

## Additional Materials

- 9' Zipper
- Fusible Fleece

## CUTTING DIRECTIONS

¼" seam allowances are included.  
WOF means width of fabric.

- One (1) piece of Template 1 from fabric **A**.
- One (1) 9.5"x7 ½" from Fabric **A**.
- One (1) piece of Template 1 from Fabric **B**.
- One (1) 1 ⅜"x 7 ½" from Fabric **C**.
- One (1) 1 ⅜"x 7 ½" from Fabric **D**.
- One (1) 1 ⅜"x 7 ½" from Fabric **E**.
- One (1) 2 ⅜"x 7 ½" from Fabric **F**.
- One (1) 4¼"x 2½" rectangle from Fabric **G**.
- One (1) 4¼"x 2½" rectangle from Fabric **H**.
- One (1) 4¼"x 2½" rectangle from Fabric **I**.
- One (1) 4¼"x 2½" rectangle from Fabric **J**.

## CONSTRUCTION

*Sew all rights sides together with ¼" seam allowance.*

- Start with the construction by assembling Fabric A ( Template 1), B ( Template 2), C, D, E and F ( Template 2).



DIAGRAM 1

- Next take Fabric G, H, I and J and assemble them as diagram below

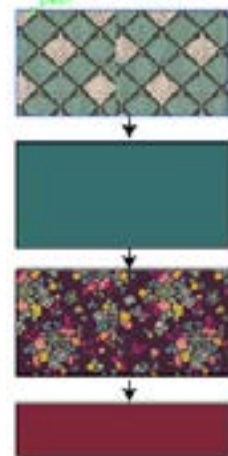


DIAGRAM 2

- Take your batting pieces and lay your front and back clutch on top and quilt as desired. This clutch was quilted with straight lines about ¼" width apart.
- Now take the two pieces, put them right sides together and sew it at an angle, resembling the Template 1 below.



DIAGRAM 3

- Next step is to attach the zipper.
- First open zipper then place on the top edge of the pieced clutch cover.

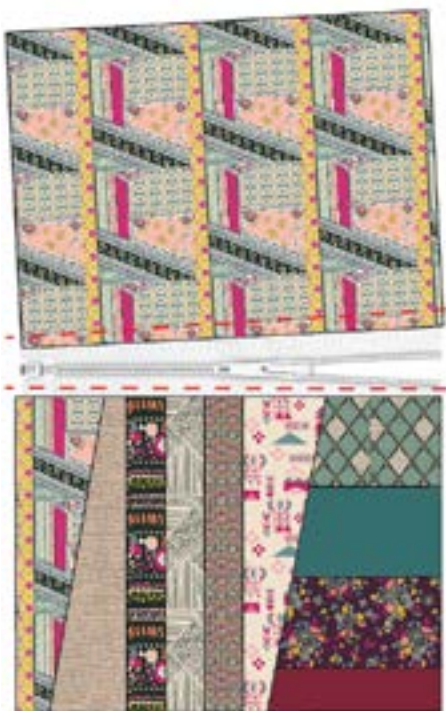


DIAGRAM 4

- Sew the 10' x 7½' rectangle of fabric **A** on the other side of the zipper, as this will be the back piece.
- Once both pieces are sewn onto the zipper fold them face to face, next step is attaching the lining.
- Take the 10"x 7½' rectangles of fabric **desired** and sew on the inner part of zipper.
- Repeat step with other 10"x 7½' rectangles of fabric **desired** on other opposite side of zipper.



DIAGRAM 5

- Next step would be to sew at a ¼' all around, leave an opening in the lining to be able to flip bag inside out.
- Once everything is sewn, flip bag through the opening, then either hand stitch or sew the opening in the lining.



[artgalleryfabrics.com](http://artgalleryfabrics.com)

NOTE: While all possible care has been taken to ensure the accuracy of this pattern, We are not responsible for printing errors or the way in which individual work varies. Please read instructions carefully before starting the construction of this quilt. If desired, wash and iron your fabrics before starting to cut.

© 2017 Courtesy of Art Gallery Quilts LLC. All Rights Reserved.



TEMPLATE 1

# Happy Sewing

#PatBravoDesign



To see more patterns, fabrics  
and lots of inspiration visit:

[patbravo.com](http://patbravo.com)

NOTE: While all possible care has been taken to ensure the accuracy of this pattern, we are not responsible for printing errors or the way in which individual work varies. Please read instructions carefully before starting the construction of this quilt. If desired, wash and iron your fabrics before starting to cut.

© 2017 Courtesy of Pat Bravo All Rights Reserved.