

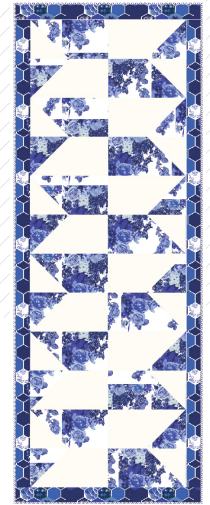
Chinoiserie



Chinoiserie

INblue

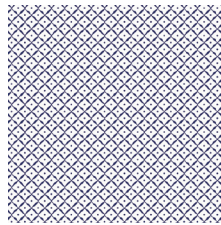
FABRICS DESIGNED BY KATARINA ROCCELLA



AZUUR STERK



INB-26630
INTERPLAY ECLECTIC



INB-26631
CHINOISERIE WIT



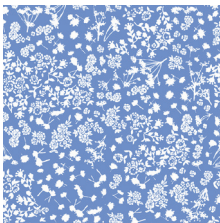
INB-26632
HEXESIS LAZULI



INB-26634
FLY AWAY VROEG



INB-26635
DE ROOS DONKER



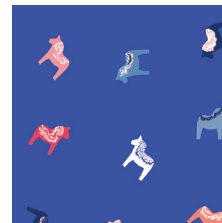
INB-26636
WEIDE IN BLUE



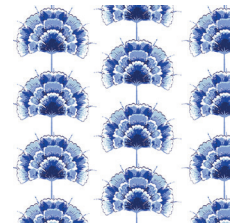
INB-26637
FIETSEN DAWN



INB-26638
BLOESEM ROYAL



INB-26639
DALASTERK

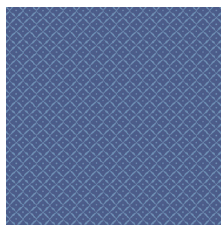


INB-26640
BLAU BLOEM

AZUUR ZOET



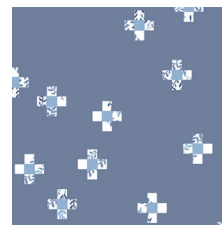
INB-36630
INTERPLAY CALM



INB-36631
CHINOISERIE KOBALT



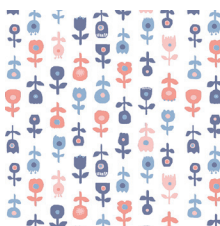
INB-36632
HEXESIS CADMIUM



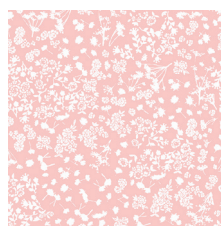
INB-36633
DELFTGELS



INB-36634
FLY AWAY LAAT



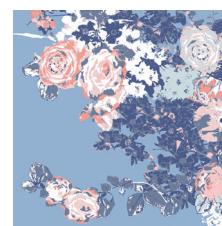
INB-36635
DE ROOS LICHT



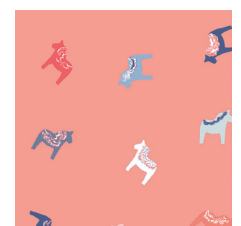
INB-36636
WEIDE IN ROSE



INB-36637
FIETSEN DUSK



INB-36638
BLOESEM SWEET



INB-36639
DALAZOET





Fabric A	INB-26632	½ yd.
Fabric B	INB-26638	⅞ yd.
Fabric C	PE 433	⅞ yd.
Fabric D	INB-26631	¼ yd.

INB-26638- 1¾ yd. (*Suggested*)

INB-26631 (Fabric **D**) *(included)*

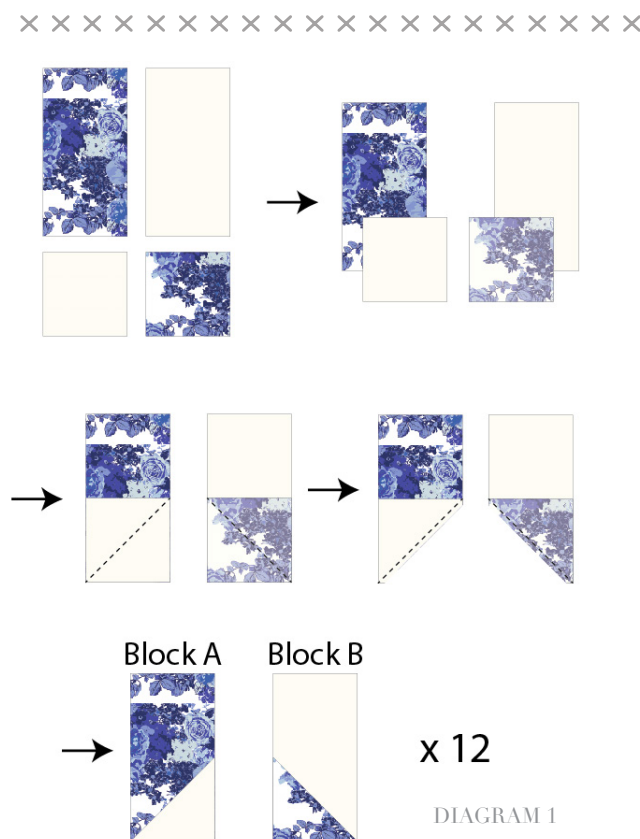


DIAGRAM 1

*1/4" seam allowances are included.
WOF means width of fabric.*

- Four (4) 30 ½" x 2 ½" strips from fabric **A**.
- Two (2) 24 ½" x 2 ½" strips from fabric **A**.
- Twelve (12) 10 ½" x 5 ½" rectangles from fabrics **B, C**.
- Twelve (12) 5 ½" x 5 ½" rectangles from fabrics **B, C**.

Sew all rights sides together with ¼" seam allowance.

- Pair every 10 ½' x 5 ½' rectangle from fabric **B** with every 5 ½' x 5 ½' square from fabric **C**.
- Pair every 10 ½' x 5 ½' rectangle from fabric **C** with every 5 ½' x 5 ½' square from fabric **B**.
- Place them face to face
- Stitch on the diagonal.
- Trim ¼' from the stitch
- Press Open.
- For fabric placement and attachment follow Diagram 1.

- Join the blocks in two rows:
- Row 1: **A > B > A > . B > A > B > A > . B > A > B > A > . B**
- Row 2: **A > B > A > . B > A > B > A > . B > A > B > A > . B**
- Turn Row 2 180° and join it to Row 1 following Diagram 2.

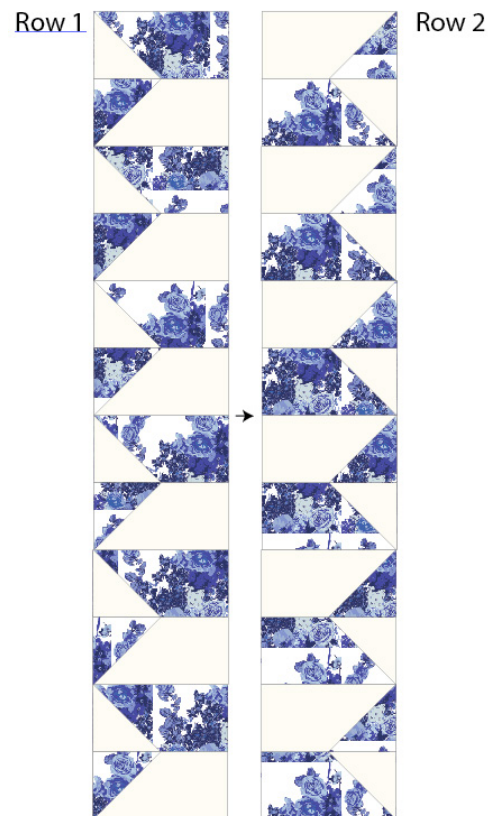


DIAGRAM 2

QUILT ASSEMBLY

Sew rights sides together.

- Place BACKING FABRIC on a large surface wrong side up. Stretch it with masking tape against that surface.
- Place BATTING on top of backing fabric.
- Place TOP on top of the batting with right side facing up. Smooth away wrinkles using your hands.
- Pin all layers together and baste with basting thread, using long stitches. You can also use safety pins to join the layers.
- Machine or hand quilt starting at the center and working towards the corners. Remember that quilting motifs are a matter of personal preference. Have fun choosing yours!
- After you finished, trim excess of any fabric or batting, squaring the quilt to proceed to bind it.

BINDING

Sew rights sides together.

- Cut enough strips 1½" wide by the width of the fabric **D** to make a final strip 190" long. Start sewing the binding strip in the middle of one of the sides of the quilt, placing the strip right side down and leaving an approximated 5" tail. Sew with ¼" seam allowance (using straight stitch), aligning the strip's raw edge with the quilt top's raw edge.
- Stop stitching ¼" before the edge of the quilt (**DIAGRAM B 1**). Clip the threads. Remove the quilt from under the machine presser foot. Fold the strip in a motion of 45° and upward, pressing with your fingers (**DIAGRAM B2**). Hold this fold with your finger, bring the strip down in line with the next edge, making a horizontal fold that aligns with the top edge of the quilt (**DIAGRAM B3**). Start sewing at ¼" of the border, stitching all the layers. Do the same in the four corners of the quilt.
- Stop stitching before you reach the last 5 or 6 inches. Cut the threads and remove the quilt from under the machine presser foot. Lay the loose ends of the binding flat along the quilt edge, folding the ends back on themselves where they meet. Press them together to form a crease. Using this crease as the stitching line, sew the two open ends of the binding with right sides together (you can help yourself marking with a pencil if the crease is difficult to see).
- Trim seam to ¼" and press open. Complete the sewing. Turn binding to back of the quilt, turn raw edge inside and stitch by hand using blind stitch.

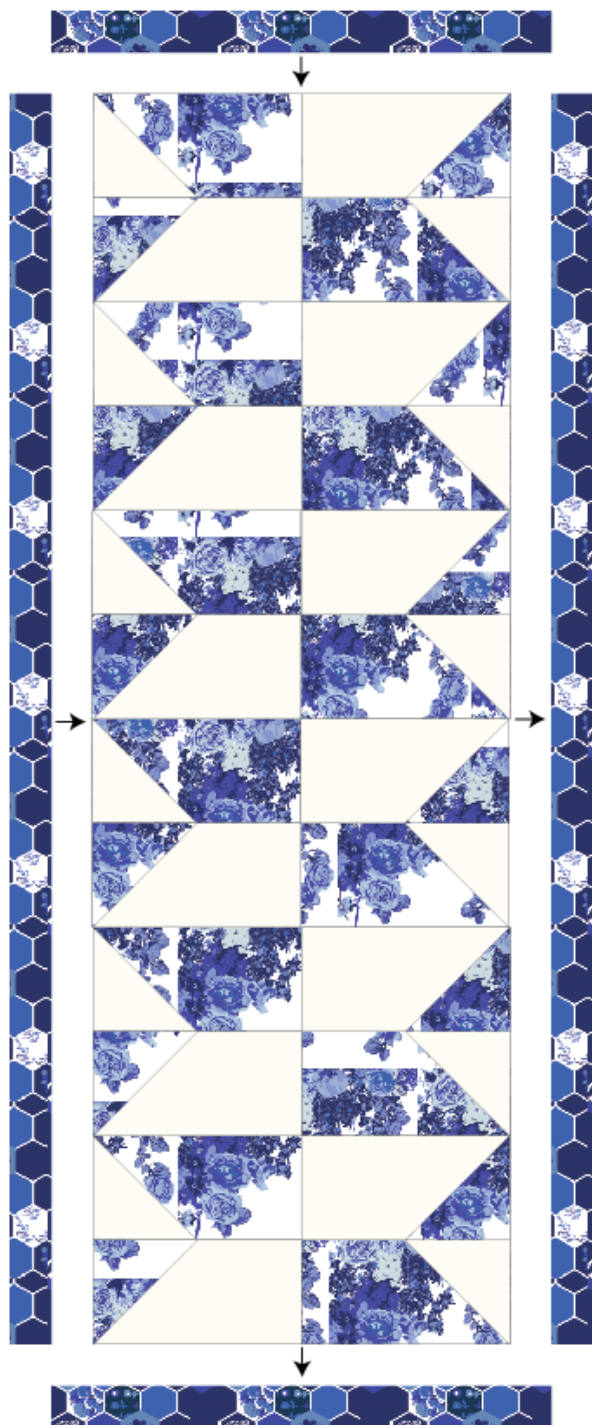
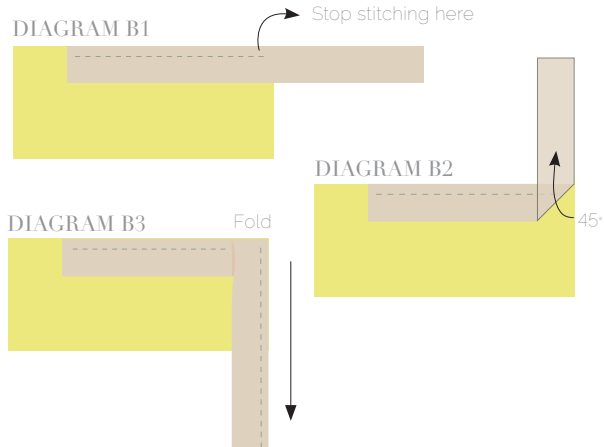


DIAGRAM 3



artgalleryfabrics.com

NOTE: While all possible care has been taken to ensure the accuracy of this pattern, We are not responsible for printing errors or the way in which individual work varies. Please read instructions carefully before starting the construction of this quilt. If desired, wash and iron your fabrics before starting to cut.

© 2017 Courtesy of Art Gallery Quilts LLC. All Rights Reserved.