

X
X
X
X
X
X
X
X
X
X
X
X
X
X
X

QUILT DESIGNED BY AGF STUDIO



XXXXXXXXXXXXXXXXXXXXXXXXXXXX



Cerulean

QUILT DESIGNED BY AGF STUDIO

INblue

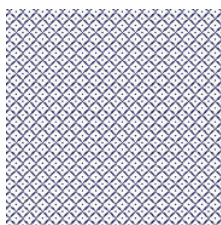
FABRICS DESIGNED BY KATARINA ROCCELLA



AZUUR STERK



INB-26630
INTERPLAY ECLECTIC



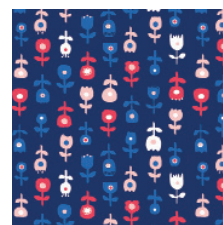
INB-26631
CHINOISERIE WIT



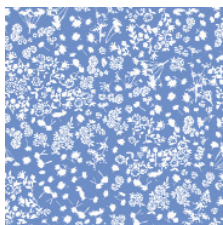
INB-26632
HEXESIS LAZULI



INB-26634
FLY AWAY VROEG



INB-26635
DE ROOS DONKER



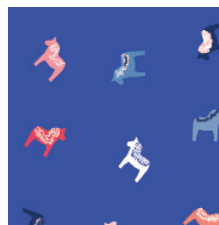
INB-26636
WEIDE IN BLUE



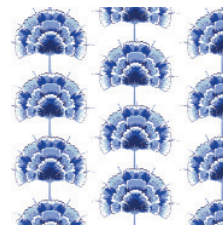
INB-26637
FIETSEN DAWN



INB-26638
BLOESEM ROYAL



INB-26639
DALASTERK

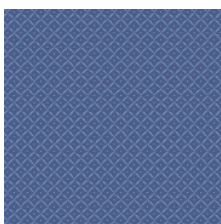


INB-26640
BLAU BLOEM

AZUUR ZOET



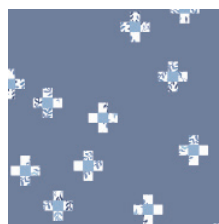
INB-36630
INTERPLAY CALM



INB-36631
CHINOISERIE KOBALT



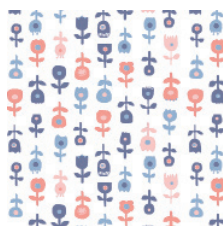
INB-36632
HEXESIS CADMIUM



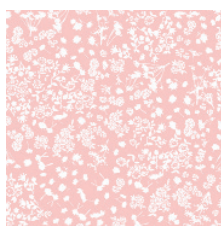
INB-36633
DELFTGELS



INB-36634
FLY AWAY LAAT



INB-36635
DE ROOS LICHT



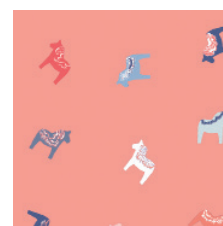
INB-36636
WEIDE IN ROSE



INB-36637
FIETSEN DUSK



INB-36638
BLOESEM SWEET



INB-36639
DALAZOET



FEEL THE DIFFERENCE ©2017 Courtesy of Art Gallery Quilts LLC. All Rights Reserved.

Cerulean

FINISHED SIZE | 60" x 80"

FABRIC REQUIREMENTS

Fabric A	INB-26630	5/8 yd.
Fabric B	INB-26631	5/8 yd.
Fabric C	INB-26632	7/8 yd.
Fabric D	INB-26634	5/8 yd.
Fabric E	INB-26635	5/8 yd.
Fabric F	INB-26637	1/2 yd.
Fabric G	INB-26639	1/3 yd.
Fabric H	INB-36631	1/3 yd.
Fabric I	INB-36632	1/2 yd.
Fabric J	INB-36634	1/2 yd.
Fabric K	INB-36635	1/2 yd.
Fabric L	INB-36636	1/3 yd.
Fabric M	INB-36637	1/2 yd.
Fabric N	INB-36639	1/3 yd.

BACKING FABRIC

INB-36638- 4 yds. *(Suggested)*

BINDING FABRIC

INB-26631 (Fabric **C**) *(included)*

CUTTING DIRECTIONS

1/4" seam allowances are included.

Print and cut out the Half Hexie Pattern Piece.
Trace onto cardstock for easier template cutting.

Fabric **A**: Cut 30 Half-Hexies
Fabric **B**: Cut 29 Half-Hexies
Fabric **C**: Cut 22 Half-Hexies
Fabric **D**: Cut 29 Half-Hexies
Fabric **E**: Cut 27 Half-Hexies
Fabric **F**: Cut 20 Half-Hexies
Fabric **G**: Cut 21 Half-Hexies
Fabric **H**: Cut 18 Half-Hexies
Fabric **I**: Cut 23 Half-Hexies
Fabric **J**: Cut 22 Half-Hexies
Fabric **K**: Cut 19 Half-Hexies
Fabric **L**: Cut 18 Half-Hexies
Fabric **M**: Cut 22 Half-Hexies
Fabric **N**: Cut 20 Half-Hexies

CONSTRUCTION

Sew all rights sides together with 1/4" seam allowance.

- You will sew the half hexies together by column and then sew the columns together. The half hexagons should be sewn on the short diagonal side they share, right sides together. Since you are sewing at an angle be sure to match up the SEAM lines, not the cut edges. When properly matched there will be little 1/4" dog ears on each side poking out. If you sew them with the cut edges matched perfectly then when opened the vertical seams will not be aligned. See the diagram below for how to properly sew the half hexie pieces together.

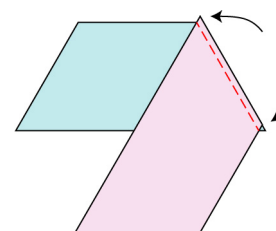


DIAGRAM 1

- While pinning the half-hexies into columns make sure that the fabric will be facing the correct way when sewn. We don't want any upside down air balloons!
- Sew as follows (see Diagram 2 & 3):
- Column 1:** Fabric D > A > J > G > I > F > L > E > D > H > J > M > D > G > B > G
- Column 2:** H > B > C > N > E > K > A > D > C > L > A > J > F > N > M > N
- Column 3:** L > F > I > H > D > M > B > F > I > M > B > E > K > A > J > F
- Column 4:** C > K > M > L > F > J > E > K > G > J > G > D > H > B > C > K
- Column 5:** I > G > J > A > K > C > D > H > N > C > N > C > L > E > I > A
- Column 6:** M > N > E > B > E > I > C > L > A > I > A > I > G > D > E > B
- Column 7:** J > H > D > G > D > A > I > G > B > E > B > F > N > C > D > H
- Column 8:** A > L > C > N > E > B > F > N > M > D > H > K > M > I > A > L
- Column 9:** B > E > I > F > D > H > K > C > J > M > L > C > J > A > B > G
- Column 10:** C > D > M > K > C > L > M > I > A > J > E > I > C > B > F > N

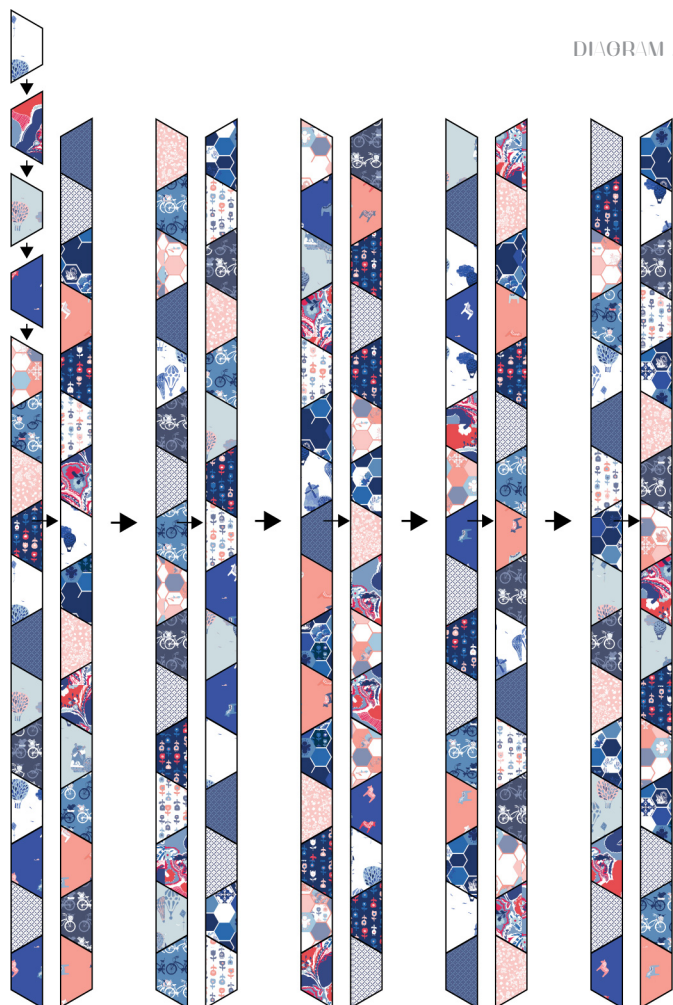


DIAGRAM 2

- **Column 11:** I > A > L > G > I > F > J > E > B > C > D > G > I > E > K > A
- **Column 12:** H > B > F > N > E > K > A > D > G > I > M > N > A > D > H > B
- **Column 13:** L > E > K > H > D > M > B > C > N > E > J > E > B > F > L > M
- **Column 14:** G > D > C > L > A > J > F > I > C > D > A > D > C > K > E > J
- **Column 15:** N > A > I > M > B > H > K > E > I > G > B > F > I > A > D > G
- **Column 16:** E > B > G > J > F > L > A > D > M > N > H > K > E > B > G > N
- **Column 17:** D > H > N > A > K > M > B > F > J > E > L > A > D > E > N > M
- **Column 18:** A > L > M > B > H > J > G > K > A > D > F > B > C > D > A > J
- **Column 19:** B > E > J > C > L > A > N > E > B > H > K > G > I > M > B > F
- **Column 20:** G > D > F > I > M > B > H > D > A > L > M > N > E > J > A > K

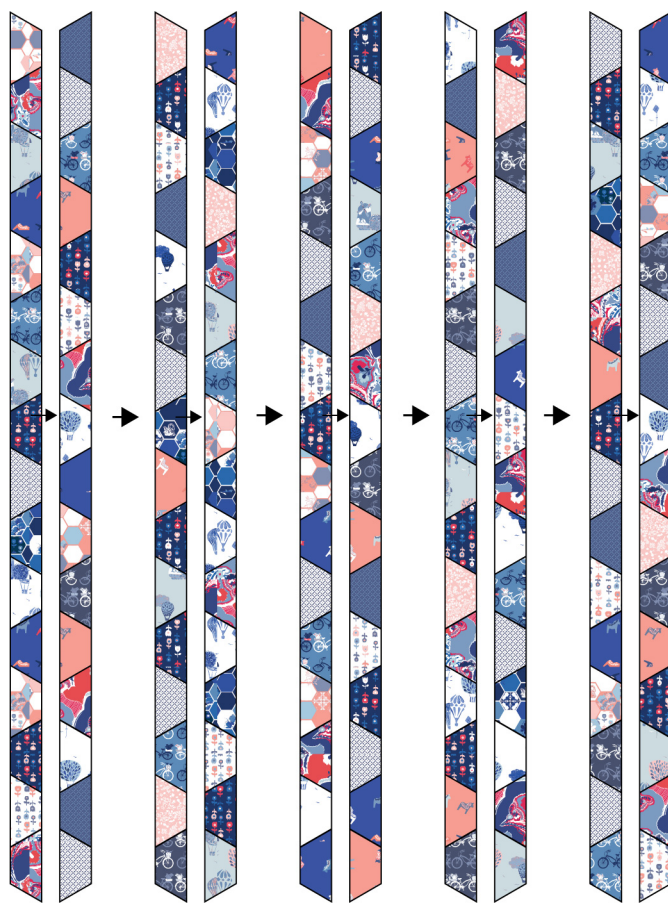


DIAGRAM 3

- Group the columns into pairs as shown and sew all pairs together, taking care the match seam points. Sew them all in the same direction, top to bottom.
- Now, sew together your 10 paired columns and sew them all in the same direction, this time the opposite way (bottom to top). This will ensure that each seam between individual columns alternates, this prevents the quilt top from skewing and distortion.
- Press the quilt and cut the points off the top and bottom making it a 60" x 80" rectangle.

ASSEMBLING THE BACKING

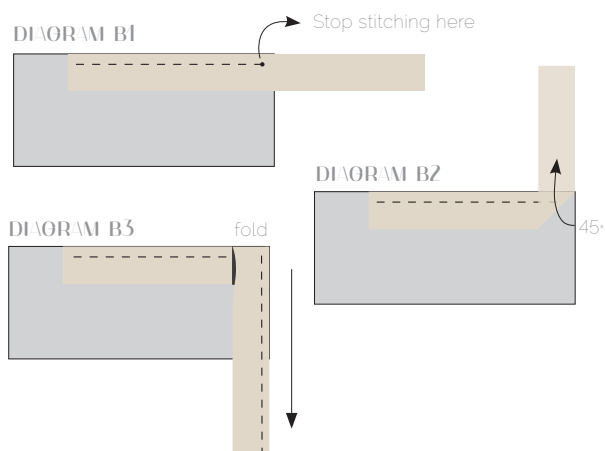
- As suggested, take 4 yds of the suggested backing fabric and cut in half to obtain two (2) 72" yds units. Sew them right sides together on the longer (72") edge, obtaining a 72" x 88" rectangle.

QUILT ASSEMBLY

Sew rights sides together.

- © Place BACKING FABRIC on a large surface wrong side up. Stretch it with masking tape against that surface.
- © Place BATTING on top of backing fabric.
- © Place TOP on top of the batting with right side facing up. Smooth away wrinkles using your hands.
- © Pin all layers together and baste with basting thread, using long stitches. You can also use safety pins to join the layers.
- © Machine or hand quilt starting at the center and working towards the corners. Remember that quilting motifs are a matter of personal preference. Have fun choosing yours!
- © After you finish, trim off any excess fabric or batting, squaring the quilt to prepare to bind it.

- © Stop stitching before you reach the last 5 or 6 inches. Cut the threads and remove the quilt from under the machine presser foot. Lay the loose ends of the binding flat along the quilt edge, folding the ends back on themselves where they meet. Press them together to form a crease. Using this crease as the stitching line, sew the two open ends of the binding with right sides together (you can help yourself marking with a pencil if the crease is difficult to see).
- © Trim seam to $\frac{1}{4}$ " and press open. Complete the sewing. Turn binding to back of the quilt, turn raw edge inside and stitch by hand using blind stitch.



BINDING

- Cut 7 strips $1\frac{1}{2}$ " wide by the width of the fabric **D** to make a final strip 290" long. Start sewing the binding strip in the middle of one of the sides of the quilt, placing the strip right side down and leaving an approximate 5" tail. Sew with $\frac{1}{4}$ " seam allowance (using a straight stitch), aligning the strip's raw edge with the quilt top's raw edge.
- © Stop stitching $\frac{1}{4}$ " before the edge of the quilt (**DIAGRAM B 1**). Clip the threads. Remove the quilt from under the machine presser foot. Fold the strip in a motion of 45° and upward, pressing with your fingers (**DIAGRAM B2**). Hold this fold with your finger, bring the strip down in line with the next edge, making a horizontal fold that aligns with the top edge of the quilt (**DIAGRAM B3**). Start sewing at $\frac{1}{4}$ " of the border, stitching all the layers. Do the same in the four corners of the quilt.



artgalleryfabrics.com

NOTE: While all possible care has been taken to ensure the accuracy of this pattern, We are not responsible for printing errors or the way in which individual work varies. Please read instructions carefully before starting the construction of this quilt. If desired, wash and iron your fabrics before starting to cut.

