

Azure Street

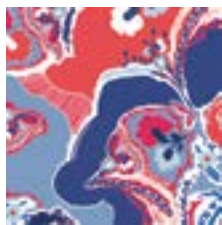


COLOR OPTION

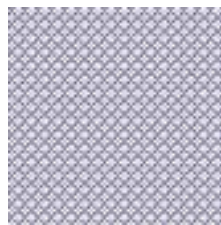
INBblue

FABRICS DESIGNED BY KATARINA ROCCELLA

AZUUR STERK



INB-26630
INTERPLAY ECLECTIC



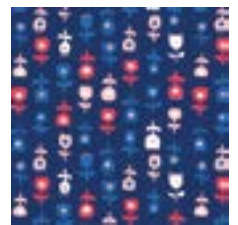
INB-26631
CHINOISERIE WIT



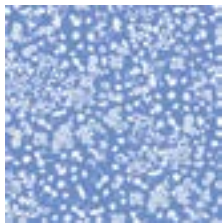
INB-26632
HEXESIS LAZULI



INB-26634
FLY AWAY VROEG



INB-26635
DE ROOS DONKER



INB-26636
WEIDE IN BLUE



INB-26637
FIETSEN DAWN



INB-26638
BLOESEM ROYAL



INB-26639
DALASTERK

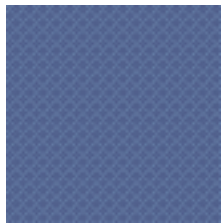


INB-26640
BLAU BLOEM

AZUUR ZOET



INB-36630
INTERPLAY CALM



INB-36631
CHINOISERIE KOBALT



INB-36632
HEXESIS CADMIUM



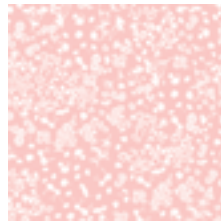
INB-36633
DELFTGELS



INB-36634
FLY AWAY LAET



INB-36635
DE ROOS LICHT



INB-36636
WEIDE IN ROSE



INB-36637
FIETSEN DUSK



INB-36638
BLOESEM SWEET



INB-36639
DALAZOET



Azure Street

FINISHED SIZE | 20" x 20"

FABRIC REQUIREMENTS

Fabric A	PE-455	1/8 yd.
Fabric B	INB-26632	1 yd.
Fabric C	INB-26634	1/8 yd.
Fabric D	INB-26631	1/2 yd.

BACKING FABRIC
INB-26631 (included)

CUTTING DIRECTIONS

1/4" seam allowances are included.
WOF means width of fabric.

Five (5) 4 7/8" squares from fabric A

Six (6) 4 7/8" squares from fabric B

Ten (10) 4 7/8" squares from fabric C

Five (5) 7 7/8" squares from fabric D

CONSTRUCTION

Sew all rights sides together with 1/4" seam allowance.

- Start with the construction of the HST
- To accomplish the HST construction use the 4 7/8" squares from fabrics B-C.
- Using a water-soluble marker or a pencil, mark a diagonal line across the wrong side of all the mentioned fabric squares (DIAGRAM 1)

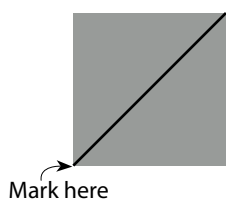
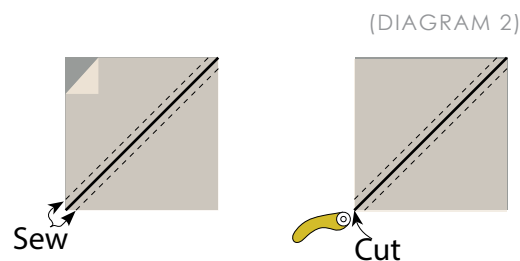


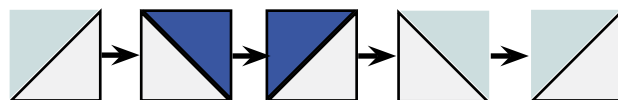
DIAGRAM 1

- Find HST combinations and quantities on diagram 2.
- Place one of the marked squares, right sides together with its corresponding square.
- Sew 1/4" on both sides of the marked line.
- Cut piece in half along the drawn line.
- Press seams open
- Pair up the rest of the marked squares.
- Repeat to make a total of 25 half-square triangles.
- Set aside.



(DIAGRAM 3)

- There are five (5) sections that need to be constructed in order to complete the pillow cover.
- Each section is made up of 5 rows with five squares in each row.
- Start putting together row 1 in the following order:
- Row 1
- **BC-CA-CA-BC-BC**



(DIAGRAM 4)

CREATING THE BACK PILLOW

Sew all rights sides together with 1/4" seam allowance. Press open.

- To make an envelope back for your pillow take both 20' x 14' rectangles and fold one 14' side on each rectangle in 1/2' and press and then fold another 1/2' and press.
- Top stitch as close to the edge as possible.
- Place rectangles right side together on top of each other to the front of your pillow and stitch all the way around your pillow at 1/4' seam allowance.
- Clip corners at seam allowance and flip piece to the right side of the fabric.
- Fill pillow with a 20' x 20' pillow form and enjoy!



artgalleryfabrics.com

NOTE: While all possible care has been taken to ensure the accuracy of this pattern, We are not responsible for printing errors or the way in which individual work varies. Please read instructions carefully before starting the construction of this quilt. If desired, wash and iron your fabrics before starting to cut.

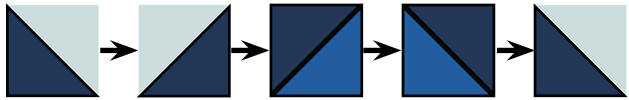
© 2017 Courtesy of Art Gallery Quilts LLC. All Rights Reserved.

- Move on to row 2
- **BC-BC-CD-CD-BC**



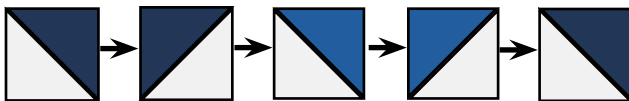
(DIAGRAM 5)

- Move on to row 3
- **BD-BD-DA-DA-BD**



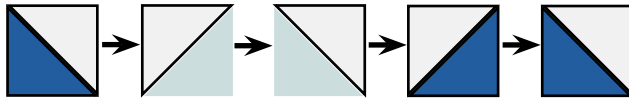
(DIAGRAM 6)

- Move on to row 4
- **CD-CD-CA-CA-CD**



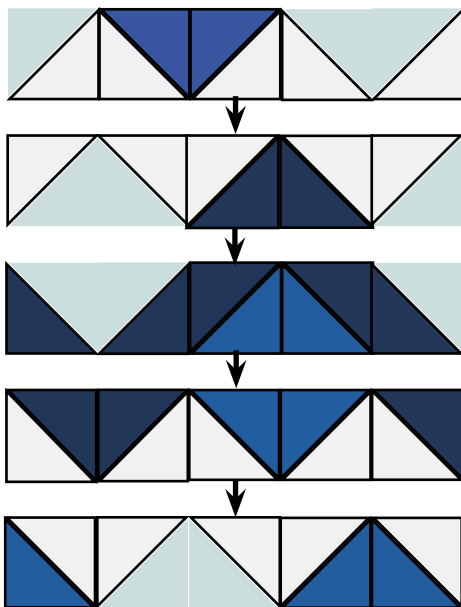
(DIAGRAM 7)

- Move on to row 5
- **CA-BC-BC-CA-CA**



(DIAGRAM 8)

- Attach row 1-5 together



(DIAGRAM 9)