



A quilt square is the central focus, featuring a central panel with a detailed illustration of a small bird perched on a branch with leaves and berries. This central panel is surrounded by eight triangular segments arranged in a pinwheel pattern. The triangles alternate between a bright red fabric with small white cross motifs and a black fabric with a white geometric pattern of intersecting lines. The entire quilt square is laid on a dark, rustic wooden surface. Surrounding the quilt are various sewing-related items: a spool of white thread in the top left, a pair of glasses, a dried branch with small orange berries at the top, and three spools of thread (white, light blue, and pink) at the bottom.



Quilt BLOCK collection

BLOCK DESIGNED BY AGF STUDIO AGFstudio

INDIE Bohème

FABRICS DESIGNED BY PAT BRAVO

ROMANTIC BOUDOIR



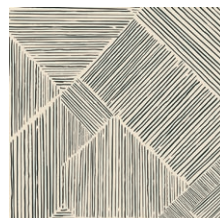
IBH-64200
GITAN PARADIS PEARL



IBH-64201
BRIEF MEMENTOS PINK



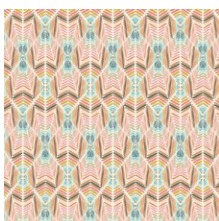
IBH-64202
BOHO QUEST NIGHT



IBH-64203
TROUVILLE ROUTES SAND



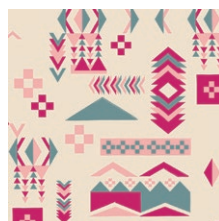
IBH-64204
VIE DE BOHÈME SUNRISE



IBH-64205
ETERNAL SERENITY ROSE



IBH-64206
BLOOMING SOUL LAUREL



IBH-64207
WOODBLOCK SPIRIT CRISP



IBH-64208
APATITE CRYSTAL



IBH-64209
BOHEMIAN PATCHWORK

ANTIQUE DRESSER



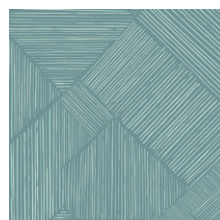
IBH-74200
BLOMMA GARDEN GOLDEN



IBH-74201
BRIEF MEMENTOS LINEN



IBH-74202
BOHO QUEST DAY



IBH-74203
TROUVILLE ROUTES OCEAN



IBH-74204
VIE DE BOHÈME SUNSET



IBH-74205
ETERNAL SERENITY CORAL



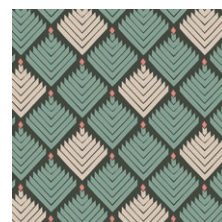
IBH-74206
BLOOMING SOUL PLUM



IBH-74207
WOODBLOCK SPIRIT WARM



IBH-74210
TROUVILLE ROUTES SUN



IBH-74211
FOLK PLEATS



FEEL THE DIFFERENCE © 2017 Courtesy of Art Gallery Quilts LLC. All Rights Reserved.

FINISHED SIZE | 12" x 12"

CUTTING DIRECTIONS

*1/4" seam allowances are included.
WOF means width of fabric.*

- Fabric A - IBH-64201
- Two (2) 5 1/4" square from Fabric A
- Fabric B- IBH- 64203
- Eight (8) 2 7/8" squares from Fabric B
- Fabric C- IBH-64208
- Four (4) 4 1/2" square from Fabric C
- Fabric D- IBH- 74204
- One (1) 4 1/2" fussy cut square from Fabric D

CONSTRUCTION

Sew all rights sides together using a scant 1/4" seam allowance.

- Take a 5 1/4" x 5 1/4" square from Fabric A and four (4) 2 7/8" x 2 7/8" squares from Fabric B. These are the pieces you will need to create four flying geese units.
- Draw a diagonal lines using a pencil or a water soluble pen on the wrong side of the fabric on each 2 7/8" x 2 7/8" square from Fabric B.

2 7/8" x 2 7/8" Squares



5 1/4" x 5 1/4" Square

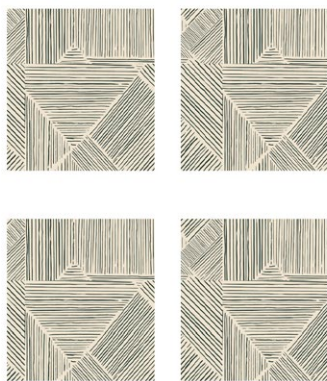


DIAGRAM 1

- Place two (2) 2 7/8" x 2 7/8" squares at each corner of your 5 1/4" x 5 1/4" square from Fabric A. Make sure right sides are together and the diagonal line match up to make a straight line. (Diagram 2.1) Sew 1/4" from the diagonal line on each side of the line. Cut piece on the diagonal line you marked. You will now have two pieces that look like Diagram 2.3.

Draw Diagonal Line

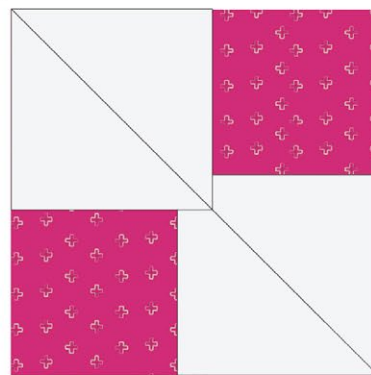
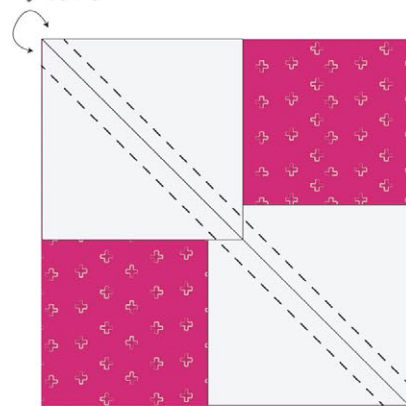


DIAGRAM 2.1

Sew Here



Cut Here

DIAGRAM 2.2

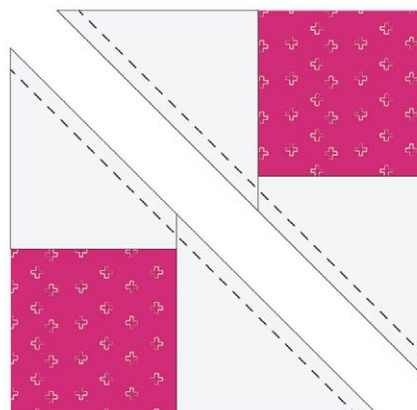


DIAGRAM 2.3

- Press seams toward Fabric **B**. (Diagram 3.1) Now place a $2\frac{7}{8} \times 2\frac{7}{8}$ square from Fabric **B** at the lower corner of your piece. Follow Diagram 3.2. Sew on each side of the diagonal line you marked at $\frac{1}{4}$ ". Cut piece on diagonal line. You will now have two piece that look like Diagram 3.3.
- Repeat steps in Diagram 3.1-3.3 for other piece created in Diagram 2.3

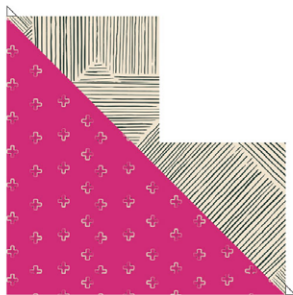


DIAGRAM 3.1

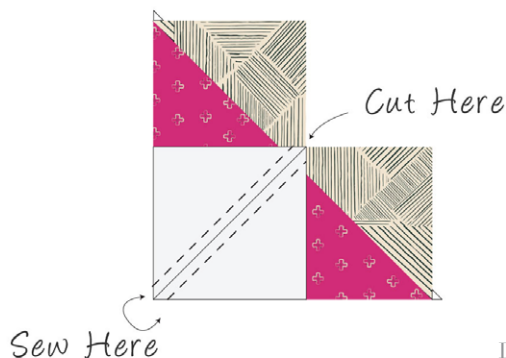


DIAGRAM 3.2

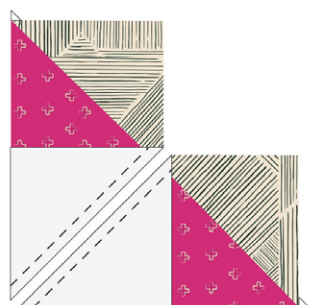


DIAGRAM 3.3

- You will now have four flying geese using the no waste method! Repeat this process again with your remaining fabric pieces to create eight flying geese! Trim geese to $2\frac{1}{2} \times 4\frac{1}{2}$ rectangles if necessary. Pair your flying geese up and sew two together with triangle points facing the direction.

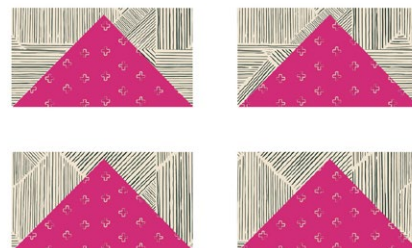


DIAGRAM 4

- Place all your pieces out following the block design. Sew rows 1-3 together. Press seams in alternating directions. Sew rows together. (Diagram 5)

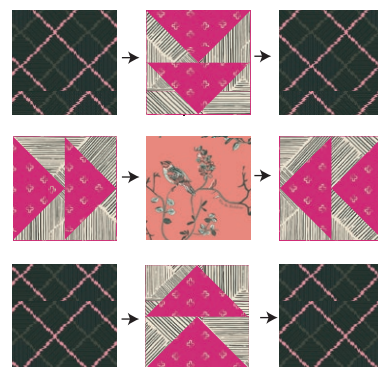


DIAGRAM 5



artgalleryfabrics.com

NOTE: While all possible care has been taken to ensure the accuracy of this pattern, We are not responsible for printing errors or the way in which individual work varies. Please read instructions carefully before starting the construction of this quilt. If desired, wash and iron your fabrics before starting to cut.