

X
X
X
X
X
X
X
X
X
X
X
X



XXXXXXXXXXXXXXXXXXXXXXXXXXXX

ANGLES

A DIVISION OF AGF



PINEAPPLE EATS



FABRICS DESIGNED BY AMY SINIBALDI

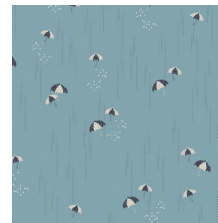
WATERFRONT PARK



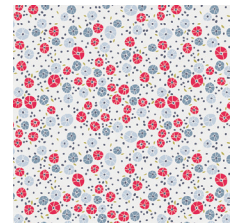
CHA-41700
MAGNOLIA NIGHTFALL



CHA-41701
STEPPING STONES MARBLE



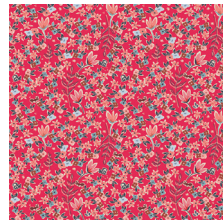
CHA-41702
RAINBRELLA MIST



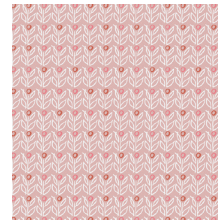
CHA-41703
BARNACLES CHERRY



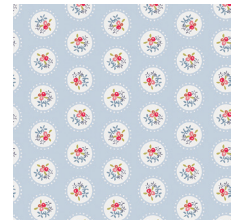
CHA-41704
ANANAS POWDER



CHA-41705
GARDEN OF DREAMS ROUGE



CHA-41706
WALLFLOWER AZALEA



CHA-41707
PAVILION TEACUP

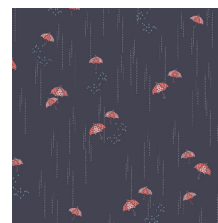
SUNSET HARBOR



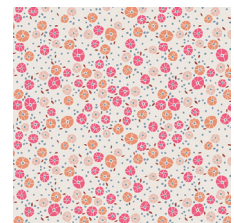
CHA-51700
MAGNOLIA SUNSET



CHA-51701
STEPPING STONES QUARTZ



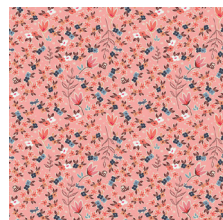
CHA-51702
RAINBRELLA SHADOW



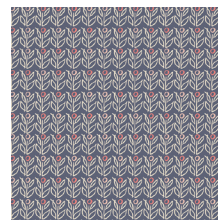
CHA-51703
BARNACLES BLUSH



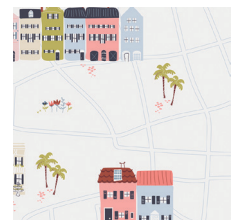
CHA-51704
ANANAS CREAM



CHA-51705
GARDEN OF DREAMS ROSE



CHA-51706
WALLFLOWER JASMINE



CHA-51708
THE ROW





PINEAPPLE EATS



FINISHED SIZE | 22" x 40"

FABRIC REQUIREMENTS

Fabric A	CHA-51708	5/8yd.
Fabric B	CHA-41705	FQ.
Fabric C	LEP-712	F8.
Fabric D	LEP-613	FQ.
Fabric E	LEP-912	FQ.
Fabric F	LEP-612	FQ.
Fabric G	LEP-813	FQ.
Fabric H	DEN-S-2004	2/3yd

BACKING FABRIC

1 yds. Fabric **H** (*included*)

CUTTING DIRECTIONS

*1/4" seam allowances are included.
WOF means width of fabric.*

Four (4) 6 1/2" x 10 1/2" rectangles from Fabric **A**

Four (4) 6 1/2" x 4 1/2" rectangles from Fabric **A**

Two (2) 2 1/2" x 10 1/2" strips from Fabric **A**

Twenty (20) 2 7/8" perfect squares from Fabric **A**

One (1) 5" perfect square from Fabric **B, G**

Six (6) 2 7/8" perfect squares from Fabric **C**

Two (2) 4" x 3" rectangles from Fabric **C**
(pineapple top)

Two (2) 2 7/8" perfect squares from Fabric **D, E,**

Four (4) 2 7/8" perfect square from Fabric **F, H**

Two (2) 10 1/2" perfect squares from Fabric **H**

Four (4) 4 1/2" perfect squares from Fabric **H**

Two (2) 1 1/2" x 22 1/2" strips from Fabric **H**

Two (2) 1 1/2" x WOF strips from Fabric **H**

CONSTRUCTION

Sew all rights sides together with 1/4" seam allowance.

- Take all the 2 7/8" perfect squares of Fabrics **C, D, E,** and **H,** and pair them with the twenty (20) 2 7/8" perfect squares of Fabrics **A**
- Place them face to face
- Draw a diagonal line
- Sew 1/4" away from line above and below.
- Cut directly of diagonal line.
- Open, fold, and press
- Use diagram as a reference.

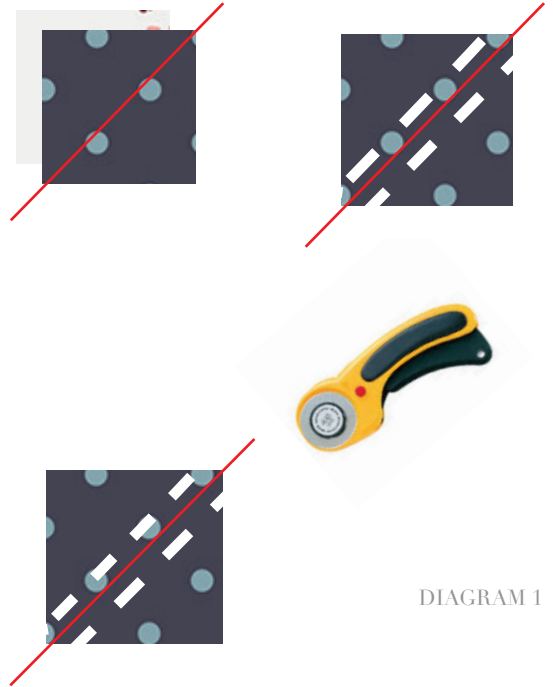


DIAGRAM 1

- There should be a total of twenty (20) HST.



DIAGRAM 2

- Pair each HST with its pair
- Sew
- Use diagram as a reference.
- Repeat



DIAGRAM 3

- Sew the strips of flying geese vertically.
- Take the $2\frac{1}{2}$ " x $10\frac{1}{2}$ " strips from Fabrics **A** and place face to face with first strip of flying geese then attach the second strip.
- Repeat

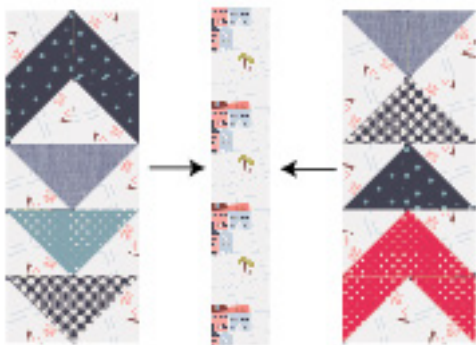


DIAGRAM 4

- Take the four (4) $6\frac{1}{2}$ " x $4\frac{1}{2}$ " rectangles from Fabric **A** and sew the four (4) $4\frac{1}{2}$ " perfect squares from Fabric **H** to the bottom portion of fabric **A**



DIAGRAM 5

XX

- Then sew the Four (4) $6\frac{1}{2}$ " x $10\frac{1}{2}$ " rectangles from Fabrics **A** to its side.

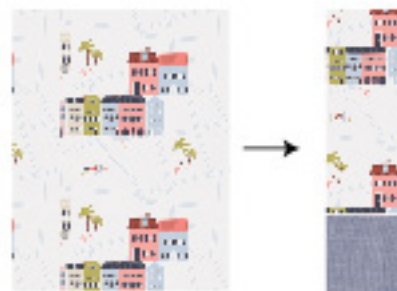


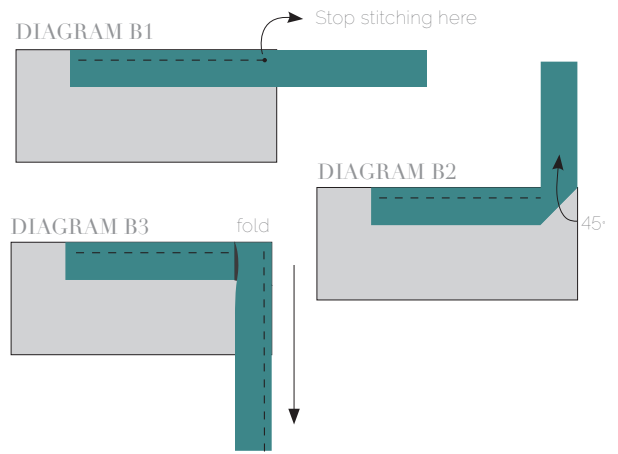
DIAGRAM 6

- There should be a total of six (6) blocks.
- Take the 5" perfect square from fabric **B, G** and use template below to cut out bottom portion of the pineapple.
- Next take the two (2) 4" x 3" rectangles from Fabric **C** and use template below to cut out top portion of pineapple top.
- Sew a pineapple top to a bottom.
- Take the pineapples center them or place them over the two (2) $10\frac{1}{2}$ " perfect squares from Fabric **H** and sew $\frac{1}{4}$ " on the edges of the pineapple.
- Now that all blocks are in tact begin to arrange accordingly use cover as a reference.
- The cover of Pineappleats charleston collection has been completed.

QUILT ASSEMBLY

Sew rights sides together.

- Place BACKING FABRIC on a large surface wrong side up. Stretch it with masking tape against that surface.
- Place BATTING on top of backing fabric.
- Place TOP on top of the batting with right side facing up. Smooth away wrinkles using your hands.
- Pin all layers together and baste with basting thread, using long stitches. You can also use safety pins to join the layers.
- Machine or hand quilt starting at the center and working towards the corners. Remember that quilting motifs are a matter of personal preference. Have fun choosing yours!
- After you finished, trim excess of any fabric or batting, squaring the quilt to proceed to bind it.



BINDING

Sew rights sides together.

- Sew your 7 WOF binding strips together to make a final strip 130' long. Start sewing the binding strip in the middle of one of the sides of the quilt, placing the strip right side down and leaving an approximated 5' tail. Sew with $\frac{1}{4}$ ' seam allowance (using straight stitch), aligning the strip's raw edge with the quilt top's raw edge.
- Stop stitching $\frac{1}{4}$ ' before the edge of the quilt (**DIAGRAM B 1**). Clip the threads. Remove the quilt from under the machine presser foot. Fold the strip in a motion of 45° and upward, pressing with your fingers (**DIAGRAM B2**). Hold this fold with your finger, bring the strip down in line with the next edge, making a horizontal fold that aligns with the top edge of the quilt (**DIAGRAM B3**). Start sewing at $\frac{1}{4}$ ' of the border, stitching all the layers. Do the same in the four corners of the quilt.
- Stop stitching before you reach the last 5 or 6 inches. Cut the threads and remove the quilt from under the machine presser foot. Lay the loose ends of the binding flat along the quilt edge, folding the ends back on themselves where they meet. Press them together to form a crease. Using this crease as the stitching line, sew the two open ends of the binding with right sides together (you can help yourself marking with a pencil if the crease is difficult to see).
- Trim seam to $\frac{1}{4}$ ' and press open. Complete the sewing. Turn binding to back of the quilt, turn raw edge inside and stitch by hand using blind stitch.



artgalleryfabrics.com

NOTE: While all possible care has been taken to ensure the accuracy of this pattern, We are not responsible for printing errors or the way in which individual work varies. Please read instructions carefully before starting the construction of this quilt. If desired, wash and iron your fabrics before starting to cut.

© 2017 Courtesy of Art Gallery Quilts LLC. All Rights Reserved.

