

X  
X  
X  
X  
X  
X  
X  
X  
X  
X  
X  
X  
X  
X  
X  
X  
X

# FLOCK of RAIN



ANGLES

A DIVISION OF AGF

FREE PATTERN

XXXXXXXXXXXXXXXXXXXXXXXXXXXXXXXXXXXX



# FLOCK of RAIN



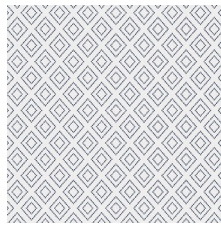
# CHARLESTON

FABRICS DESIGNED BY AMY SINIBALDI

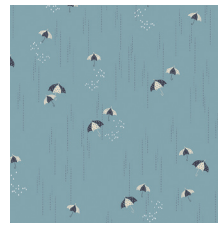
WATERFRONT PARK



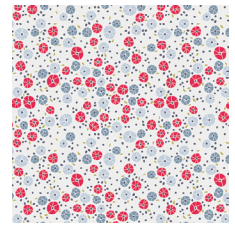
CHA-41700  
MAGNOLIA NIGHTFALL



CHA-41701  
STEPPING STONES MARBLE



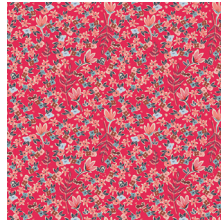
CHA-41702  
RAINBRELLA MIST



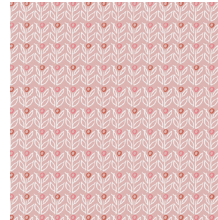
CHA-41703  
BARNACLES CHERRY



CHA-41704  
ANANAS POWDER



CHA-41705  
GARDEN OF DREAMS ROUGE



CHA-41706  
WALLFLOWER AZALEA



CHA-41707  
PAVILION TEACUP

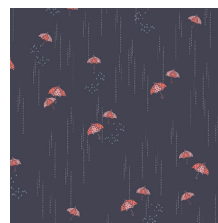
SUNSET HARBOR



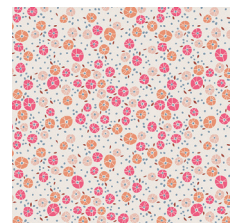
CHA-51700  
MAGNOLIA SUNSET



CHA-51701  
STEPPING STONES QUARTZ



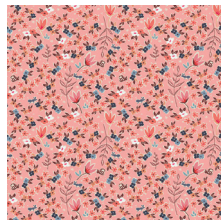
CHA-51702  
RAINBRELLA SHADOW



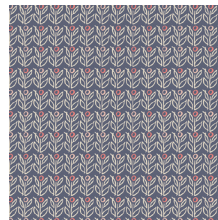
CHA-51703  
BARNACLES BLUSH



CHA-51704  
ANANAS CREAM



CHA-51705  
GARDEN OF DREAMS ROSE



CHA-51706  
WALLFLOWER JASMINE



CHA-51708  
THE ROW



# FLOCK of RAIN



FINISHED SIZE | 16" x 16"

## FABRIC REQUIREMENTS

|                 |           |        |
|-----------------|-----------|--------|
| Fabric <b>A</b> | CHA-51702 | 5/8yd. |
| Fabric <b>B</b> | CHA-41705 | F8.    |
| Fabric <b>C</b> | CHA-51704 | F8.    |
| Fabric <b>D</b> | CHA-41701 | F8.    |
| Fabric <b>E</b> | CHA-41706 | F8.    |
| Fabric <b>F</b> | CHA-51701 | F8.    |
| Fabric <b>G</b> | CHA-41703 | F8.    |

### BACKING FABRIC

Fabric **A** (included)

## CUTTING DIRECTIONS

*1/4" seam allowances are included.  
WOF means width of fabric.*

- One (1) 1 1/2" x 16 1/2" strip from Fabric **A**
- One (1) 6 1/2" x 4 1/2" rectangle from Fabric **A**
- One (1) 6 1/2" x 3 1/2" rectangle from Fabric **A**
- One (1) 3 1/2" x 16 1/2" strip from Fabric **A**
- One (1) 4 1/2" perfect square from Fabric **A**
- Two (2) 1 1/2" x 10 1/2" strips from Fabric **A**
- One (1) 4 1/2" x 2 1/2" rectangle from Fabric **A**
- Ten (10) 3 1/2" perfect squares from Fabric **A**
- Four (4) 2 1/2" perfect squares from Fabric **A**
- Two (2) 16" x 10" rectangles from Fabric **A**
- One (1) 6 1/2" x 3 1/2" rectangle from Fabrics **B, C, D, E, F, G**
- Two (2) 4 1/2" x 2 1/2" rectangles from Fabric **G**

## CONSTRUCTION

*Sew all rights sides together with 1/4" seam allowance.*

- To begin take two (2) 3 1/2" perfect squares from Fabric **A** and pair them face to face with one (1) 6 1/2" x 3 1/2" rectangle from Fabrics **B, C, D, E, F, G**



DIAGRAM 1

- Sew diagonally, open, fold, cut excess fabric leaving 1/4", and press.
- Repeat with the other 3 1/2" perfect square on the opposite side. (use diagram as a reference)



DIAGRAM 2

- Next take the four (4) 4 1/2" perfect square from Fabric **A** and pair face to face with the two (2) 4 1/2" x 2 1/2" rectangles from Fabric **G**
- Repeat the same method as previous units.





- Sew flying geese units together.
- Following sew the  $4\frac{1}{2}' \times 2\frac{1}{2}'$  rectangle from Fabric **A** and sew to the top portion of this unit.
- Then the  $4\frac{1}{2}'$  perfect square from Fabric **A** and sew to the bottom portion of this unit.



DIAGRAM 3

- Take the two (2)  $1\frac{1}{2}' \times 10\frac{1}{2}'$  strips from Fabric **A** and sew to the sides of the unit.

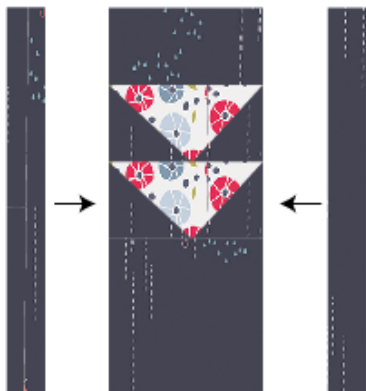


DIAGRAM 4

- Sew the flying geese units with Fabrics **F, C** together., then sew to the bottom of previous unit.

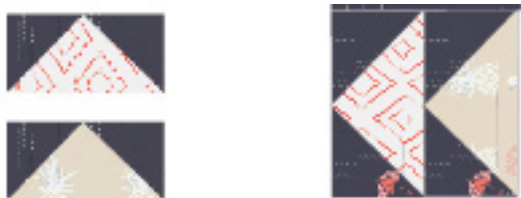


DIAGRAM 5

XXXXXXXXXXXXXXXXXXXXXXXXXXXXXXXXXXXX

- Following align all  $6\frac{1}{2}' \times 3\frac{1}{2}'$  units accordingly. use cover as a reference.
- Sew each piece together at a  $\frac{1}{4}'$ .



DIAGRAM 6

- Next take the  $6\frac{1}{2}' \times 4\frac{1}{2}'$  rectangle from Fabric **A** and sew to the top portion of this unit.
- Then the  $6\frac{1}{2}' \times 3\frac{1}{2}'$  rectangle from Fabric **A** and sew to the bottom portion of this unit.



DIAGRAM 7

- Take the  $1\frac{1}{2}' \times 16\frac{1}{2}'$  strip of Fabric **A** sew to the left side of this unit.
- Then take the  $3\frac{1}{2}' \times 16\frac{1}{2}'$  strip of Fabric **A** and sew to the right side of this unit.
- Finally sew the last final unit to the block bringing the cover of the pillow together.

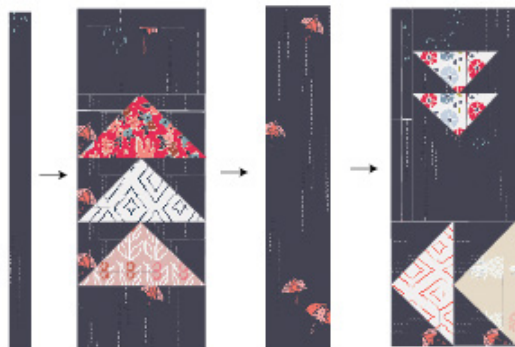


DIAGRAM 8

## CREATING THE BACK PILLOW

*Sew all rights sides together with 1/4" seam allowance.  
Press open.*

- To make an envelope back for your pillow take both 16" x 10" rectangles and fold one 10" side on each rectangle in 1/2" and press and then fold another 1/2" and press.
- Top stitch as close to the edge as possible.
- Place rectangles right side together on top of each other to the front of your pillow and stitch all the way around your pillow at 1/4" seam allowance.
- Clip corners at seam allowance and flip piece to the right side of the fabric.
- Fill pillow with a 16" x 16" pillow form and enjoy!



[artgalleryfabrics.com](http://artgalleryfabrics.com)

NOTE: While all possible care has been taken to ensure the accuracy of this pattern, We are not responsible for printing errors or the way in which individual work varies. Please read instructions carefully before starting the construction of this quilt. If desired, wash and iron your fabrics before starting to cut.

© 2017 Courtesy of Art Gallery Quilts LLC. All Rights Reserved.