

X  
X  
X  
X  
X  
X  
X  
X  
X  
X  
X  
X  
X  
X

# Sweet DREAMS





# Sweet DREAMS

## Les PETITS

FABRICS DESIGNED BY AMY SINIBALDI



PETITS STIPPLES



**LEP-610**  
PETITS STIPPLES MIDNIGHT



**LEP-611**  
PETITS STIPPLES ROSE



**LEP-612**  
PETITS STIPPLES TEABERRY



**LEP-613**  
PETITS STIPPLES SKY

PETIT DOTS



**LEP-710**  
PETITS DOTS ASH



**LEP-711**  
PETITS DOTS CREME



**LEP-712**  
PETITS DOTS MIDNIGHT

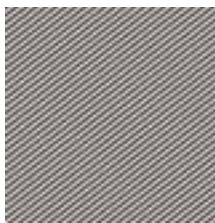


**LEP-713**  
PETITS DOTS ROSE

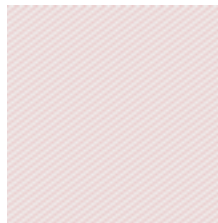
PETIT STROKES



**LEP-810**  
PETITS STROKE CORAL



**LEP-811**  
PETITS STROKES MIDNIGHT

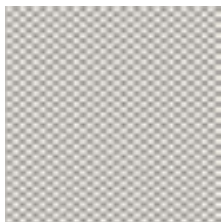


**LEP-812**  
PETITS STROKES ROSE



**LEP-813**  
PETITS STROKES SUN

PETIT CHECKS



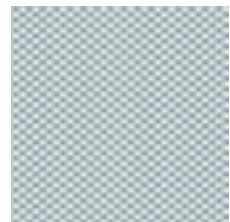
**LEP-910**  
PETITS CHECKS ASH



**LEP-911**  
PETITS CHECK CORAL



**LEP-912**  
PETITS CHECKS MIDNIGHT



**LEP-913**  
PETITS CHECKS SKY



# Sweet DREAMS

FINISHED SIZE | 14" x 14"

## FABRIC REQUIREMENTS

Fabric <b>A</b>	LEP-613	1/8 yd.
Fabric <b>B</b>	LEP-912	1/8 yd.
Fabric <b>C</b>	LEP-713	1/2 yd.
Fabric <b>D</b>	LEP-910	1/8 yd.
Fabric <b>E</b>	LEP-712	1/8 yd.
Fabric <b>F</b>	LEP-812	1/8 yd.
Fabric <b>G</b>	LEP-913	1/8 yd.
Fabric <b>H</b>	LEP-813	1/8 yd.
Fabric <b>I</b>	LEP-711	1/8 yd.
Fabric <b>J</b>	LEP-710	1/8 yd.
Fabric <b>K</b>	LEP-811	1/8 yd.
Fabric <b>L</b>	LEP-610	1/8 yd.
Fabric <b>M</b>	LEP-611	1/8 yd.

### BACKING FABRIC

Fabric **C** (included)

## CUTTING DIRECTIONS

1/4" seam allowances are included.  
WOF means width of fabric.

Cut two (2) 1 1/2" x WOF from Fabric **A**

Cut one (1) 1 1/2" x WOF from Fabric **B**

Cut one (1) 1 1/2" x WOF from Fabric **C**

Cut two (2) 1 1/2" x WOF from Fabric **D**

Cut one (1) 1 1/2" x WOF from Fabric **E**

Cut one (1) 1 1/2" x WOF from Fabric **F**

Cut two (2) 1 1/2" x WOF from Fabric **G**

Cut one (1) 1 1/2" x WOF from Fabric **H**

Cut one (1) 1 1/2" x WOF from Fabric **I**

Cut one (1) 1 1/2" x WOF from Fabric **J**

## CONSTRUCTION

Sew all rights sides together with 1/4" seam allowance.

### Block A:

- Sew strips together into set of four with Fabrics **D, A, F, E**
- Subcut eight (8) 4 1/2" x 4 1/2" squares from the **Block A** strip.

### Block B:

- Sew strips together into set of four with Fabrics **A, B, C, D**
- Subcut six (6) 4 1/2" x 4 1/2" squares from the **Block B** strip.

### Block C:

- Sew strips together into set of four with Fabrics **I, H, G, M**
- Subcut eight (8) 4 1/2" x 4 1/2" squares from the **Block C** strip.

### Block D:

- Sew strips together into set of four with Fabrics **K, G, J, L**
- Subcut three (3) 4 1/2" x 4 1/2" squares from the **Block D** strip.
- See diagram below

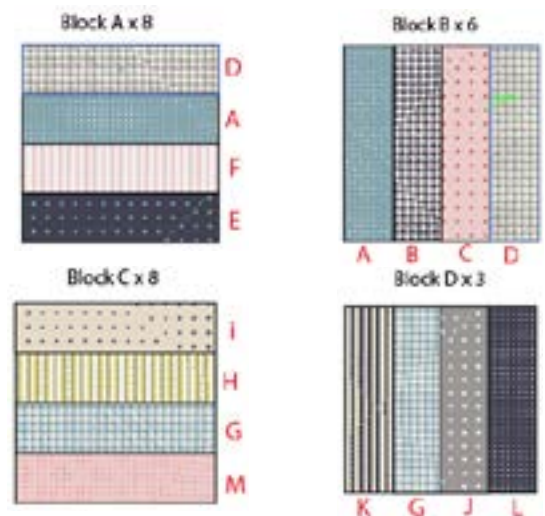


DIAGRAM 1

## ASSEMBLING THE BLOCKS

- Follow Diagram 2 as a reference for block placement.
- Start by joining the blocks to create the rows.
- Attach the rows together paying close attention to their alignment, since not all of them are aligned in the center.

Row # Block order:

- 1 A
- 2 C B A
- 3 A D C B A
- 4 C B A D C B A
- 5 C B A D C
- 6 C B A
- 7 C

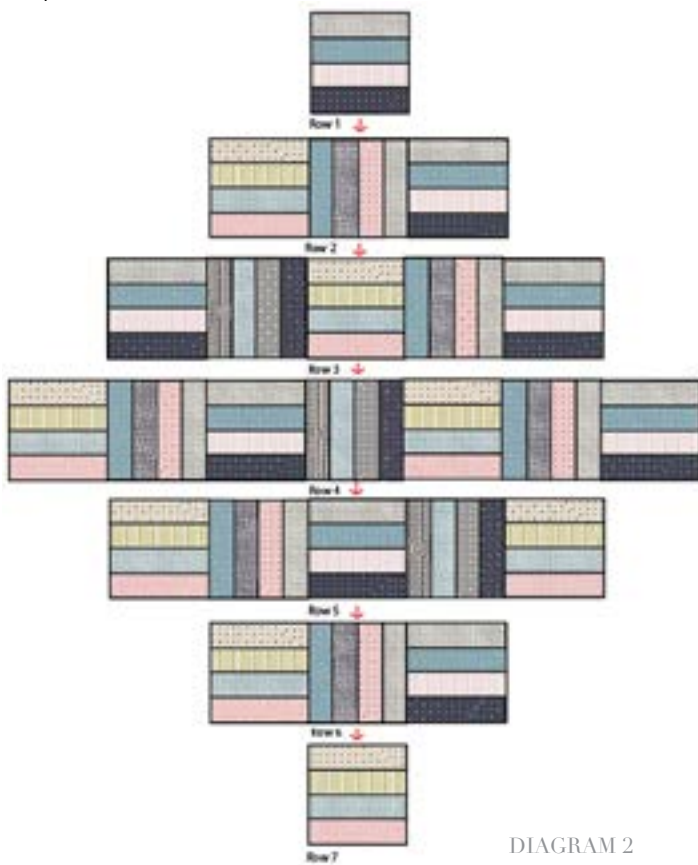


DIAGRAM 2

- After assembling all the blocks, rotate the piece 45° degree angle and trim it to end up with an 14 ½' x 14 ½' square.

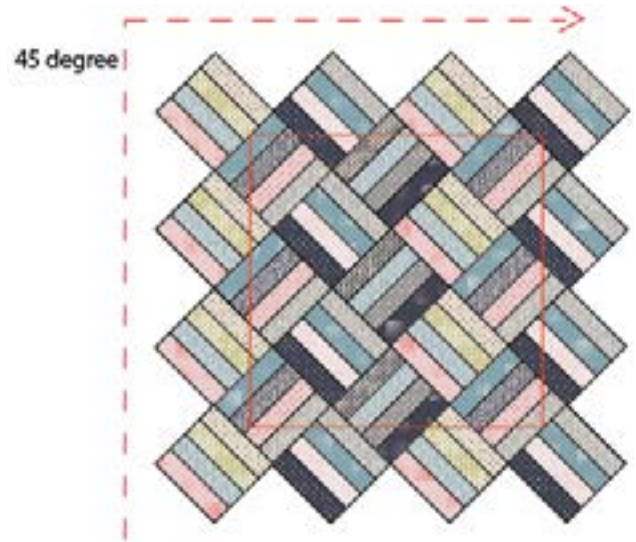


DIAGRAM 3

## CREATING THE BACK PILLOW

*Sew all rights sides together with ¼" seam allowance. Press open.*

- To make a envelope back for your pillow take both 15' x 10' rectangles and fold one 10' side on each rectangle in 1/2' and press and then fold another 1/2' and press.
- Top stitch as close to the edge as possible.
- Place rectangles right side together on top of each other to the front of your pillow and stitch all the way around your pillow at ¼' seam allowance.
- Clip corners at seam allowance and flip piece to the right side of the fabric.
- Fill pillow with a 14' x 14' pillow form and enjoy!

