

X  
X  
X  
X  
X  
X  
X  
X  
X  
X  
X  
X

## This image displays a complex quilt block design, likely a variation of a traditional 'Star' or 'Sawtooth' pattern. The design is composed of numerous geometric shapes, including triangles and squares, arranged in a symmetrical, interlocking fashion. The color palette is muted and earthy, featuring shades of gray, pink, yellow-green, and white. The background is a dark gray with a fine, repeating geometric pattern. The central area is a large white square, which is surrounded by a series of concentric geometric borders. The outermost border is a dark gray band with a fine, repeating geometric pattern. The inner borders are composed of triangles and squares in shades of pink, yellow-green, and gray, arranged in a way that creates a sense of depth and movement. The overall effect is a highly detailed and visually striking geometric composition.

× × × × × × × × × × × × × × × × × × × ×

A DIVISION OF AGF



# PEAKS

les PETITS

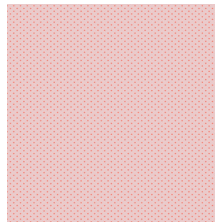
FABRICS DESIGNED BY AMY SINIBALDI



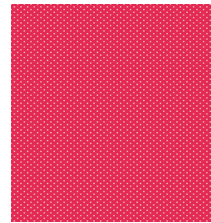
PETITS STIPPLES



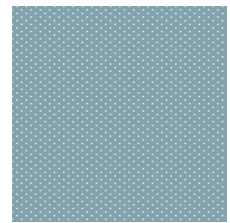
LEP-610  
PETITS STIPPLES MIDNIGHT



LEP-611  
PETITS STIPPLES ROSE

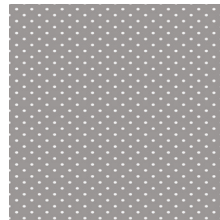


LEP-612  
PETITS STIPPLES TEABERRY

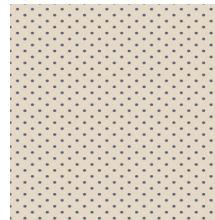


LEP-613  
PETITS STIPPLES SKY

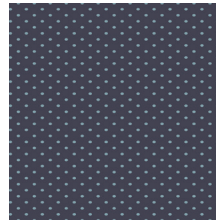
PETIT DOTS



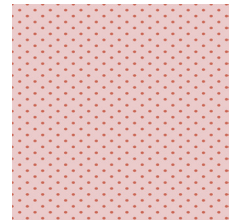
LEP-710  
PETITS DOTS ASH



LEP-711  
PETITS DOTS CREME

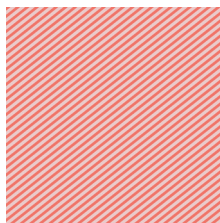


LEP-712  
PETITS DOTS MIDNIGHT

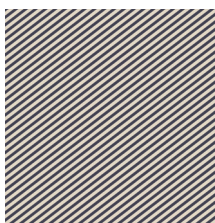


LEP-713  
PETITS DOTS ROSE

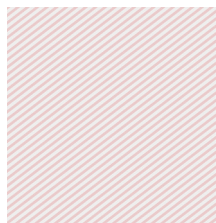
PETIT STROKES



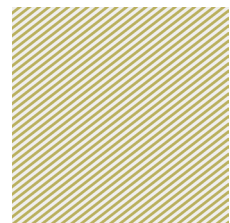
LEP-810  
PETITS STROKE CORAL



LEP-811  
PETITS STROKES MIDNIGHT

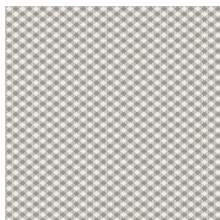


LEP-812  
PETITS STROKES ROSE

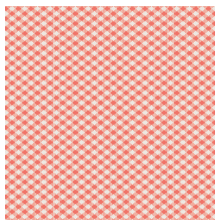


LEP-813  
PETITS STROKES SUN

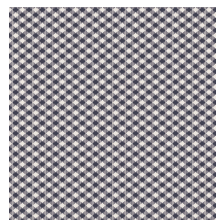
PETIT CHECKS



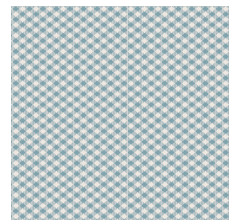
LEP-910  
PETITS CHECKS ASH



LEP-911  
PETITS CHECK CORAL



LEP-912  
PETITS CHECKS MIDNIGHT



LEP-913  
PETITS CHECKS SKY



FEEL THE DIFFERENCE © 2017 Courtesy of Art Gallery Quilts LLC. All Rights Reserved.



FINISHED SIZE | 38" x 50"

## FABRIC REQUIREMENTS

Fabric <b>A</b>	LEP-813	½ yd.
Fabric <b>B</b>	LEP-910	1 yd.
Fabric <b>C</b>	LEP-812	½ yd.
Fabric <b>D</b>	DEN-OYD-604	¾ yd.

### BINDING FABRIC

Fabric **B** (Included)

### BACKING FABRIC

Fabric **A** (Suggested) 1½ Yd.

## CUTTING DIRECTIONS

*¼" seam allowances are included.  
WOF means width of fabric.*

Two (2) 6⅞" x WOF strips from fabric **A**.

- Subcut eight (8) 6⅞" x 6⅞" squares
- Subcut two (2) 1½" x 24½" strips

One (1) 1½" x WOF strips from fabric **A**.

- Subcut one (1) 1½" x 38½" strip

Three (3) 6⅞" x WOF strips from fabric **B**.

- Subcut fifteen (15) 6⅞" x 6⅞" squares
- Subcut one (1) 6½" x 6½" square

Three (3) 1½" x WOF strips from fabric **B**.

- Subcut one (1) 1½" x 38½" strip
- Subcut two (2) 1½" x 24½" strips

Two (2) 6⅞" x WOF strips from fabric **C**.

- Subcut eight (8) 6⅞" x 6⅞" squares
- Subcut three (3) 6½" x 6½" squares

XXXXXXXXXXXXXXXXXXXXXXXXXXXXXXXXXXXX

Two (2) 6⅞" x WOF strips from fabric **D**.

One (1) 6½" x WOF strips from fabric **D**.

- Subcut nine (9) 6⅞" x 6⅞" squares
- Subcut four (4) 6½" x 6½" squares

## CONSTRUCTION

*Sew all rights sides together with ¼" seam allowance.*

- Take one (1) 6⅞" x 6⅞" from fabric **A** and one (1) 6⅞" x 6⅞" from fabric **B** and place them right sides together.
- Draw a diagonal line with a fabric pen.
- Stitch ¼" from each side of the drawn line.
- Cut along the drawn line.
- Press open both pieces, you should have two (2) Block 1

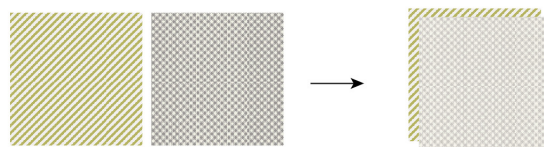


DIAGRAM 1

- Take all the 6⅞" x 6⅞" squares and repeat the process until you get the following blocks, in the amount shown in Diagram 2.

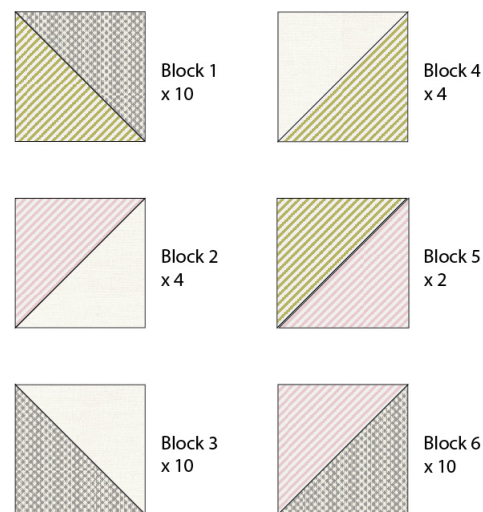


DIAGRAM 2



## BINDING

*Sew rights sides together.*

- Follow Diagram 3 to make the Rows.
- Join the Rows.

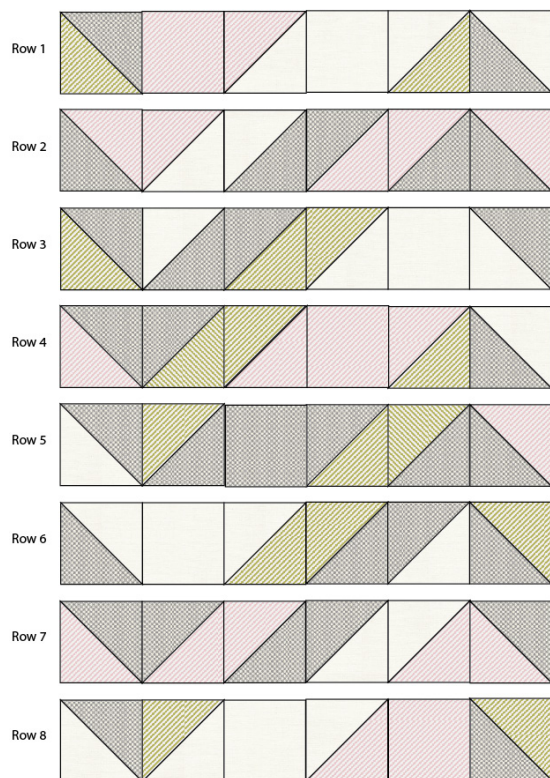


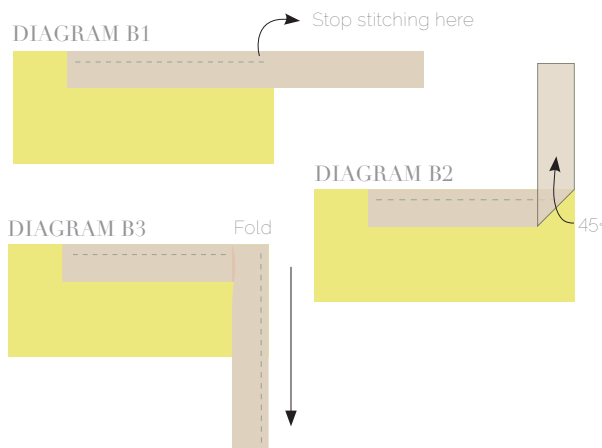
DIAGRAM 3

## QUILT ASSEMBLY

*Sew rights sides together.*

- Place BACKING FABRIC on a large surface wrong side up. Stretch it with masking tape against that surface.
- Place BATTING on top of backing fabric.
- Place TOP on top of the batting with right side facing up. Smooth away wrinkles using your hands.
- Pin all layers together and baste with basting thread, using long stitches. You can also use safety pins to join the layers.
- Machine or hand quilt starting at the center and working towards the corners. Remember that quilting motifs are a matter of personal preference. Have fun choosing yours!
- After you finished, trim excess of any fabric or batting, squaring the quilt to proceed to bind it.

- Cut enough strips  $1\frac{1}{2}$ ' wide by the width of the fabric **B** to make a final strip 350' long. Start sewing the binding strip in the middle of one of the sides of the quilt, placing the strip right side down and leaving an approximated 5' tail. Sew with  $\frac{1}{4}$ ' seam allowance (using straight stitch), aligning the strip's raw edge with the quilt top's raw edge.
- Stop stitching  $\frac{1}{4}$ ' before the edge of the quilt (**DIAGRAM B 1**). Clip the threads. Remove the quilt from under the machine presser foot. Fold the strip in a motion of  $45^\circ$  and upward, pressing with your fingers (**DIAGRAM B 2**). Hold this fold with your finger, bring the strip down in line with the next edge, making a horizontal fold that aligns with the top edge of the quilt (**DIAGRAM B 3**). Start sewing at  $\frac{1}{4}$ ' of the border, stitching all the layers. Do the same in the four corners of the quilt.
- Stop stitching before you reach the last 5 or 6 inches. Cut the threads and remove the quilt from under the machine presser foot. Lay the loose ends of the binding flat along the quilt edge, folding the ends back on themselves where they meet. Press them together to form a crease. Using this crease as the stitching line, sew the two open ends of the binding with right sides together (you can help yourself marking with a pencil if the crease is difficult to see).
- Trim seam to  $\frac{1}{4}$ ' and press open. Complete the sewing. Turn binding to back of the quilt, turn raw edge inside and stitch by hand using blind stitch.





[artgalleryfabrics.com](http://artgalleryfabrics.com)

NOTE: While all possible care has been taken to ensure the accuracy of this pattern, We are not responsible for printing errors or the way in which individual work varies. Please read instructions carefully before starting the construction of this quilt. If desired, wash and iron your fabrics before starting to cut.

© 2017 Courtesy of Art Gallery Quilts LLC. All Rights Reserved.