



A top-down photograph of a square quilt block with a star design. The quilt is composed of several fabric pieces: a central star made of red floral and black-and-white floral patterns, surrounded by light blue polka-dot triangles and squares. The entire quilt block is set against a dark brown wooden background. Surrounding the quilt are various sewing supplies: three spools of thread (black, tan, and dark blue), several small wooden buttons, and a few dried, light-colored twigs or branches.



Quilt BLOCK collection

BLOCK DESIGNED BY AGF STUDIO *AGFstudio*

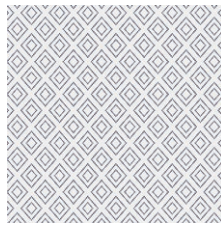


FABRICS DESIGNED BY AMY SINIBALDI

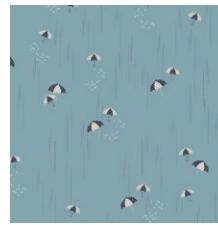
WATERFRONT PARK



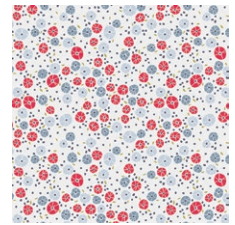
CHA-41700
MAGNOLIA NIGHTFALL



CHA-41701
STEPPING STONES MARBLE



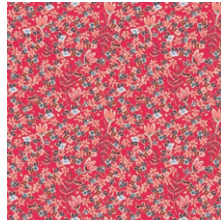
CHA-41702
RAINBRELLA MIST



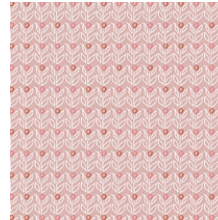
CHA-41703
BARNACLES CHERRY



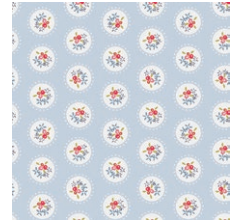
CHA-41704
ANANAS POWDER



CHA-41705
GARDEN OF DREAMS ROUGE



CHA-41706
WALLFLOWER AZALEA



CHA-41707
PAVILION TEACUP

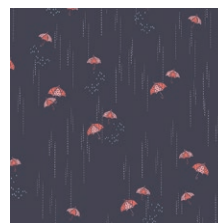
SUNSET HARBOR



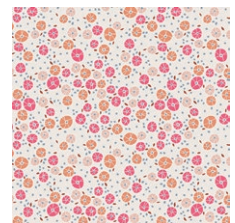
CHA-51700
MAGNOLIA SUNSET



CHA-51701
STEPPING STONES QUARTZ



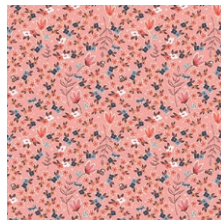
CHA-51702
RAINBRELLA SHADOW



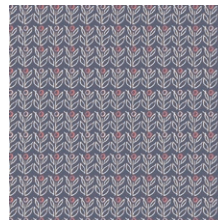
CHA-51703
BARNACLES BLUSH



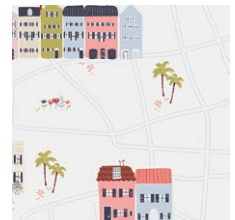
CHA-51704
ANANAS CREAM



CHA-51705
GARDEN OF DREAMS ROSE



CHA-51706
WALLFLOWER JASMINE



CHA-51708
THE ROW



FEEL THE DIFFERENCE © 2017 Courtesy of Art Gallery Quilts LLC. All Rights Reserved.

FINISHED SIZE | 12" x 12"

CUTTING DIRECTIONS

*1/4" seam allowances are included.
WOF means width of fabric.*

- Fabric A- CHA-41700
- Fabric B- CHA-41705
- Fabric C- LEP-613
- Four (4) 2 5/8" x 4 1/2" rectangle from Fabric **A** and **B**
- Two (2) 2 1/2" squares from Fabric **A** and **B**
- One (1) 2 1/2" x 12" strip from Fabric **A** and **B**
- Two (2) 2 1/2" x 12" strip from Fabric **C**
- Four (4) 4 1/2" square from Fabric **C**

CONSTRUCTION

Sew all rights sides together with 1/4" seam allowance.

- To make your outer four patch blocks take a 2 1/2" x 12 1/2" strip from Fabric **A** and **C** and sew right sides together.

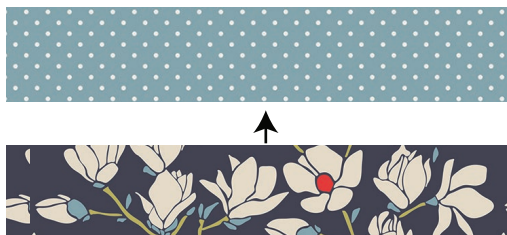
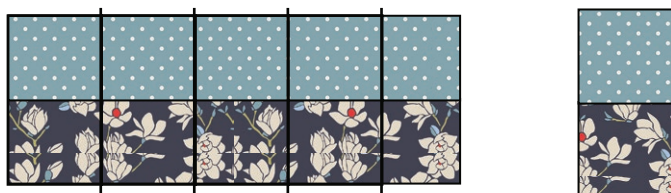


DIAGRAM 1

- Press seams to one direction and sub cut four 2 1/2" wide strips. (Diagram 2)
- Rearrange your strip pieces to make two four patch blocks. (Diagram 3)
- Repeat this same process with your 2 1/2" x 12 1/2" strips from Fabric **B** and **C**.



Four

DIAGRAM 2



DIAGRAM 3

- For your center four patch block take two 2 1/2" squares from Fabric **A** and **B** and sew into a four patch block.

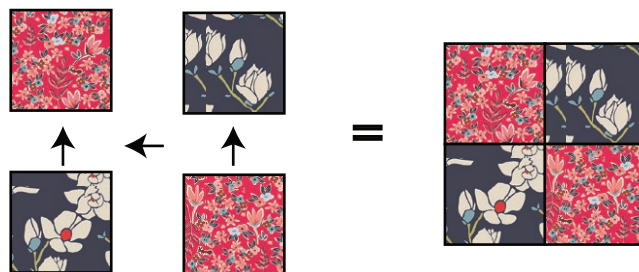


DIAGRAM 4

- To make your triangle point block take a rectangle from **A** and **B** and draw a diagonal line from one corner to the other alternating your direction for your other rectangle.



DIAGRAM 5

- Place your first rectangle on your 4 1/2" square as follows. (Diagram 6)
- Sew on the line you drew. Trim excess fabric to 1/4". (Diagram 7)



DIAGRAM 6

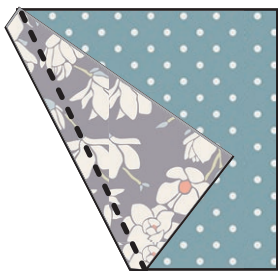


DIAGRAM 7

- Now place your other rectangle right sides together to your square as follows.
- Sew on the line you drew and trim excess fabric to 1/4".
- Press open to reveal your triangle point block.

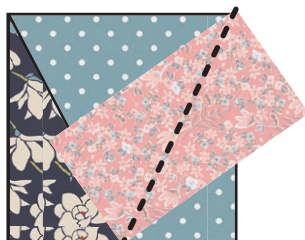


DIAGRAM 8

- In the same manner make three more blocks. One more like the one we just made.
- Then make two more making the mirror image. (Diagram 9)



Two



Two

DIAGRAM 9

- Place all your pieces out following the block design. Sew rows 1-3 together..

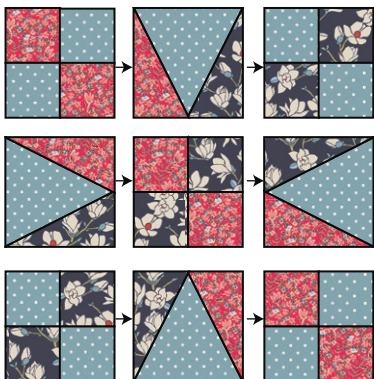


DIAGRAM 10

Congratulations
& enjoy



artgalleryfabrics.com

NOTE: While all possible care has been taken to ensure the accuracy of this pattern, We are not responsible for printing errors or the way in which individual work varies. Please read instructions carefully before starting the construction of this quilt. If desired, wash and iron your fabrics before starting to cut.