

flora PIECING



FUSIONS

by AGF

FREE PATTERN

XXXXXXXXXXXXXXXXXXXXXXXXXXXX

flora PIECING

AGFstudio

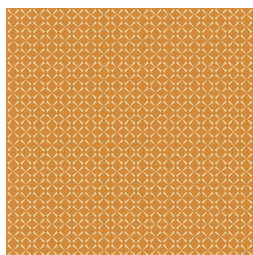


boho FUSION

FABRICS DESIGNED BY AGF STUDIO



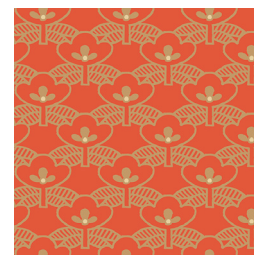
FUS-B-200
ACQUA DI ROSE BOHO



FUS-B-201
RETROSPECTIVE BOHO



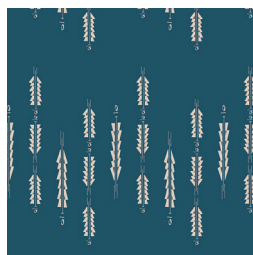
FUS-B-202
COTTAGELY POSY BOHO



FUS-B-203
FRIDA'S DREAM BOHO



FUS-B-204
PRISMA BOHO



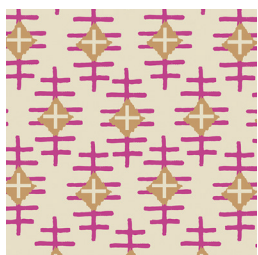
FUS-B-205
AURA FLETCINGS BOHO



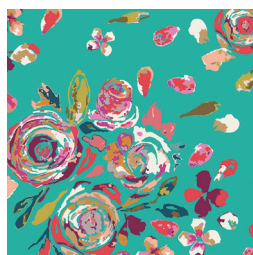
FUS-B-206
ILLUSIONIST VINE BOHO



FUS-B-207
LACE IN BLOOM BOHO



FUS-B-208
PATH MARKER BOHO



FUS-B-209
SWIFTING FLORA BOHO



PE-433
SNOW



FEEL THE DIFFERENCE © 2017 Courtesy of Art Gallery Quilts LLC. All Rights Reserved.



FINISHED SIZE | 10' x 8'

FABRIC REQUIREMENTS

Fabric A	FUS-B-200	F8
Fabric B	FUS-B- 205	F8
Fabric C	FUS-B-206	F8
Fabric D	FUS-B-207	F8
Fabric E	BFUS-B-209	F8
Fabric F	P.E 432	F8

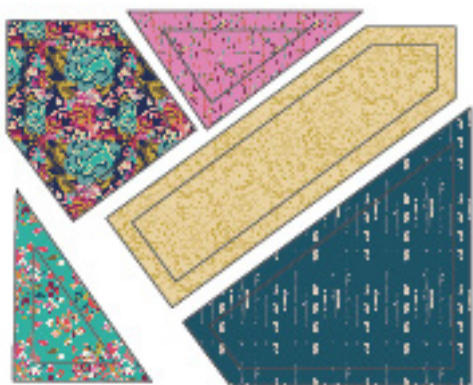
BACKING FABRIC

FUS-B-200 (included)

CUTTING DIRECTIONS

*1/4" seam allowances are included.
WOF means width of fabric.*

- Use template below to cut pieces
- Place each fabric accordingly (*use cover as reference*)



XXXXXXXXXXXXXXXXXXXXXXXXXXXXXXXXXXXX

- One (1) 1½' x 5' strip of fabric **F**
- One (1) 1½' x 9' strip of fabric **F**
- One (1) 1½' x 10' strip of fabric **F**
- One (1) 1½' x 11' strip of fabric **F**
- One (1) 10½' x 8½' rectangle of fabric **A**

CONSTRUCTION

Sew all rights sides together with 1/4" seam allowance.

- Sew the 1½' x 11' strip of fabric **F** to the bottom right piece of fabric **B**

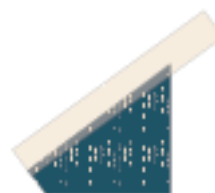


DIAGRAM 1

- Sew the template piece of fabric **D** to the unit.
- Sew the 1½' x 10' strip of fabric **F** to the other side.

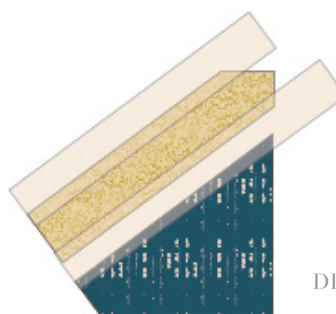


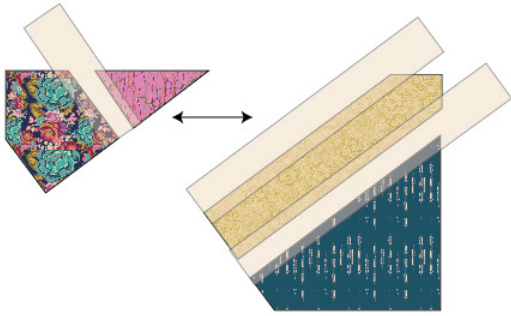
DIAGRAM 2

- Next sew the triangular piece of fabric **C** to the sew the 1½' x 5' strip of fabric **F**
- Then sew the top left corner piece of fabric **A** to the unit

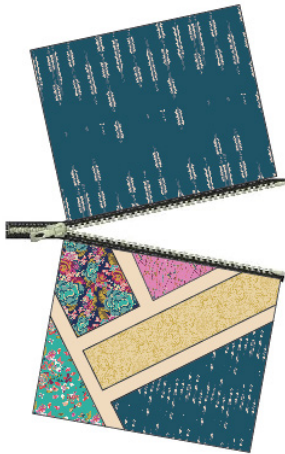


DIAGRAM 3

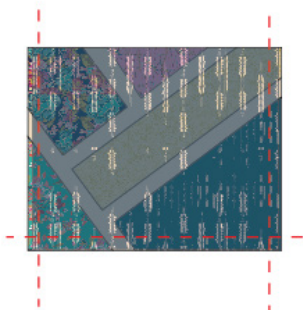
- Sew both units together, use diagram as a reference.



- Sew the both left corner of fabric **E** to the $1\frac{1}{2}' \times 9'$ strip of fabric **F**
- Sew and join all pieces together, completing the cover of the boho pieced clutch!!
- Feel free to add batting to the back to give the bag more density.
- Also suggested to add a quilty design to the cover of the bag
- Attach zipper to the cover and the $10\frac{1}{2}' \times 8\frac{1}{2}'$ rectangle of fabric **A**.



- Sew at a $\frac{1}{4}'$ on the left, bottom, and right side of the clutch. *(remember to leave the zipper slightly open to flip bag inside out)*



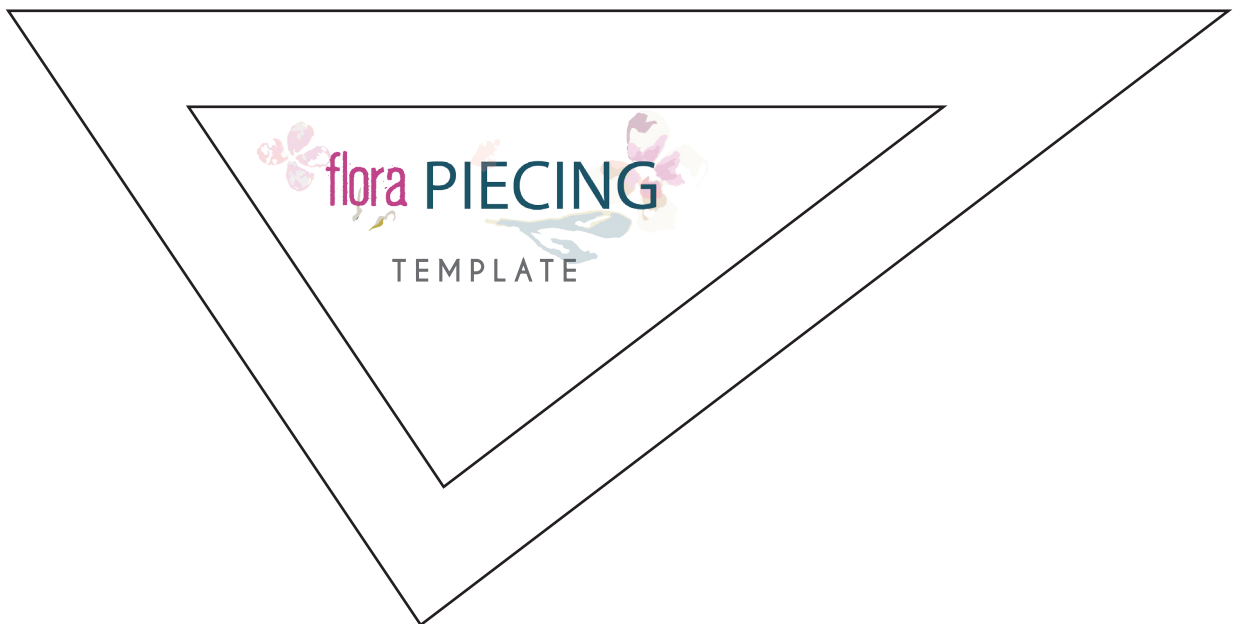
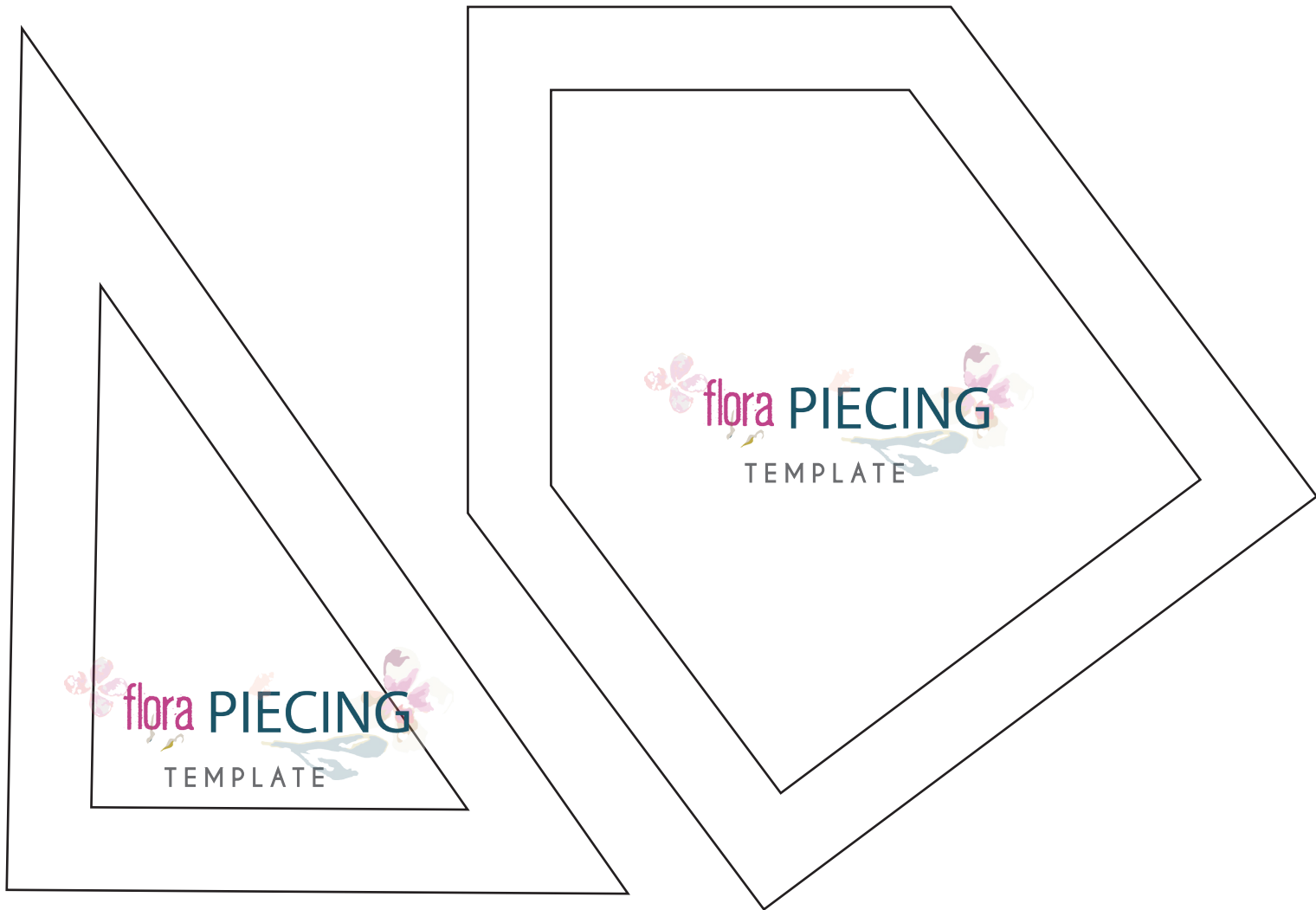
XXXXXXXXXXXXXXXXXXXXXXXXXXXXXXXXXXXX

- Flip the bag inside out and there there you have the Flora piecing boho clutch (:



artgalleryfabrics.com

NOTE: While all possible care has been taken to ensure the accuracy of this pattern, We are not responsible for printing errors or the way in which individual work varies. Please read instructions carefully before starting the construction of this quilt. If desired, wash and iron your fabrics before starting to cut.





flora PIECING
TEMPLATE

