

XXXXXX

A close-up photograph of a quilted pillow. The pillow features a complex patchwork design with various patterns including floral motifs, geometric shapes like triangles and diamonds, and solid colors in shades of green, red, and blue. The quilted texture is visible across the surface. The pillow is resting on a bright yellow, textured surface, possibly a rug or blanket. In the background, other pillows with different patterns, including a blue and white floral one and a blue and white geometric one, are partially visible.

XXXXXXXXXXXXXXXXXXXXXXXXXXXX



Cross Country



FABRICS DESIGNED BY SHARON HOLLAND

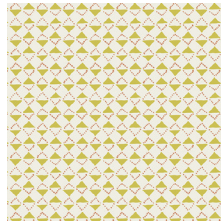


COLOR OPTION

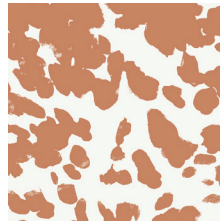
PLANT



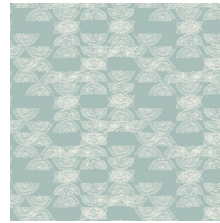
BON-38500
PERENNIAL OPTIMISM



BON-38501
GATHER MELLOW



BON-38502
GRAZING SIENNA



BON-38503
HAYMOW EARLY



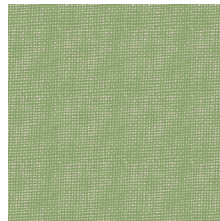
BON-38505
VINE FLORET



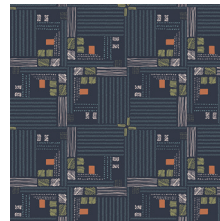
BON-38506
PRAIRIE MAZE



BON-38508
SCENIC BLUE SKY



BON-38509
PLAIN WEAVE THATCH



BON-38510
TARTAN FIELD MIDNIGHT

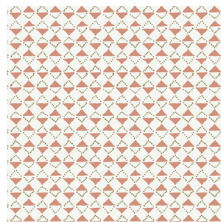


BON-38511
VINE BRAID

HARVEST



BON-48500
PERENNIAL RENEWAL



BON-48501
GATHER RUSTIC



BON-48502
GRAZING BRINDLE



BON-48503
HAYMOW STACK



BON-48504
ABUNDANT GALVANIZE



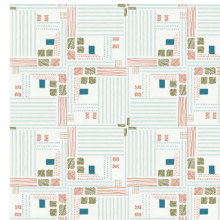
BON-48506
PRAIRIE CRIMSON



BON-48507
ARBORESCENT SEASONS



BON-48509
PLAIN WEAVE FLAX



BON-48510
TARTAN FIELD SNOW



BON-48511
VINE UMBRA



FEEL THE DIFFERENCE © 2017 Courtesy of Art Gallery Quilts LLC. All Rights Reserved.

Cross Country

FINISHED SIZE | 16' x 16'

FABRIC REQUIREMENTS

Fabric A	BON - 48509	F8.
Fabric B	BON - 48506	F8.
Fabric C	BON - 38509	⅓ yd.
Fabric D	BON - 48504	½ yd.
Fabric E	DEN-S-2008	F8.

BACKING FABRIC

BON - 48504 1/2 yds. *(included)*

CUTTING DIRECTIONS

Three (3) 3½" perfect squares from fabric **E, A**

Six (6) 3½" perfect squares from fabric **B**

Eight (8) 5½" x 2½" rectangles from fabric **B**

Two (2) 16' x 10' rectangles from fabric **D**

Two (2) 6½' x 4½' rectangles from fabric **D**

One (1) 16½' x 4½' strip from fabric **D**

Four (4) 10½' x 1½' strips from fabric **D**

CONSTRUCTION

Sew all rights sides together with 1/4" seam allowance. Press open.

- Sew the $3\frac{1}{2}$ " perfect square of fabric **E** to the $5\frac{1}{2}$ " x $2\frac{1}{2}$ " rectangle of fabric **B**.
- Sew the $3\frac{1}{2}$ " perfect square of fabric **B** to the bottom of the unit.
- Repeat three (3) more times.
- Sew the $3\frac{1}{2}$ " perfect square of fabric **A** to the $5\frac{1}{2}$ " x $2\frac{1}{2}$ " rectangle of fabric **B**
- Then sew the $3\frac{1}{2}$ " perfect square of fabric **B** to the bottom of the unit.
- Repeat three (3) more times.

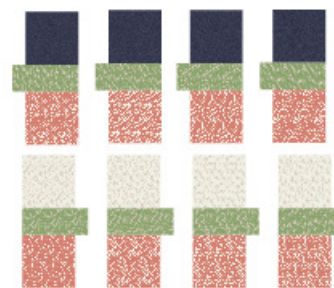


DIAGRAM 1

- Take the Four (4) $10\frac{1}{2}$ ' x $1\frac{1}{2}$ ' strips from fabric **D** and place in between the sewn units.
- Begin to align the units in the following order:
- two (2) of each block.

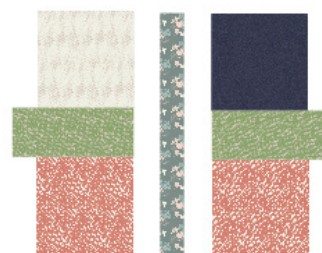


DIAGRAM 2

- Sew the pieces together, use reference above.
- Now use the 6" perfect square template below that has been rotated to a diamond shape.
- Place template over the blocks and then cut out fabric that is on the outer portion of the diamond.

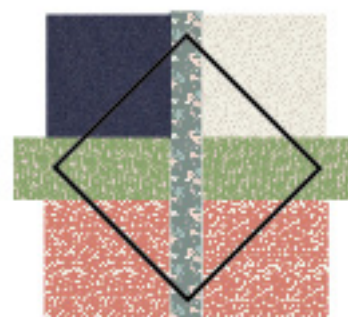


DIAGRAM 3



DIAGRAM 5

- Once all pieces are cut align them as such using the diagram below.



DIAGRAM 5

- Take the $6\frac{1}{2}' \times 4\frac{1}{2}'$ rectangles of fabric **D** and sew to the top left block, then sew the bottom left block to the bottom of unit.
- Sew the top right corner block to the $6\frac{1}{2}' \times 4\frac{1}{2}'$ rectangles of fabric **D**
- Then sew the bottom right block to the bottom of the unit.



DIAGRAM 6

- Take the $16\frac{1}{2}' \times 4\frac{1}{2}'$ strip from fabric **D** and unite the two units together.
- Sew the first strip of blocks face to face, then sew the second strips of blocks to the opposite side.



DIAGRAM 7

CREATING THE BACK PILLOW

Sew all rights sides together with $\frac{1}{4}"$ seam allowance. Press open.

- To make a envelope back for your pillow take both $16' \times 10'$ rectangles of fabric **D** and fold one $10'$ side on each rectangle in $1/2'$ and press and then fold another $1/2'$ and press.
- Top stitch as close to the edge as possible.
- Place rectangles right side together on top of each other to the front of your pillow and stitch all the way around your pillow at $\frac{1}{4}"$ seam allowance.
- Clip corners at seam allowance and flip piece to the right side of the fabric.
- Fill pillow with a $16' \times 16'$ pillow form and enjoy!



artgalleryfabrics.com

NOTE: While all possible care has been taken to ensure the accuracy of this pattern, We are not responsible for printing errors or the way in which individual work varies. Please read instructions carefully before starting the construction of this quilt. If desired, wash and iron your fabrics before starting to cut.

© 2017 Courtesy of Art Gallery Quilts LLC. All Rights Reserved.

