

# UNION Jack



FUSIONS

by AGF

FREE PATTERN

XXXXXXXXXXXXXXXXXXXXXXXXXXXX



UNION Jack

AGFstudio



Ablloom FUSION

FABRICS DESIGNED BY AGF STUDIO



FUS-A-400  
FLORET STAINS ABLOOM



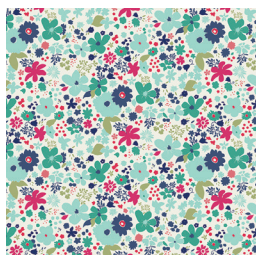
FUS-A-401  
FASHION SCENT ABLOOM



FUS-A-402  
BOHEMIAN CHARMS ABLOOM



FUS-A-403  
BED OF DAISIES ABLOOM



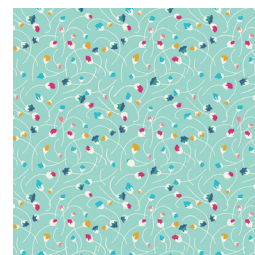
FUS-A-404  
VINTAGE RUSH ABLOOM



FUS-A-405  
BUDQUETTE ABLOOM



FUS-A-406  
HE LOVES ME ABLOOM



FUS-A-407  
NAIVETY ABLOOM



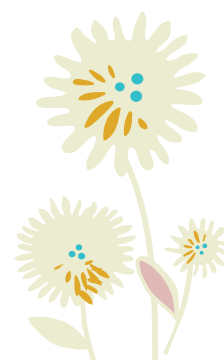
FUS-A-408  
LADYLIKE ABLOOM



FUS-A-409  
SEED PUFFS ABLOOM



FEEL THE DIFFERENCE © 2017 Courtesy of Art Gallery Quilts LLC. All Rights Reserved.





FINISHED SIZE | 16' x 16'

## FABRIC REQUIREMENTS

|                 |           |         |
|-----------------|-----------|---------|
| Fabric <b>A</b> | FUS-A-400 | 5/8 yd. |
| Fabric <b>B</b> | FUS-A-408 | 1/4 yd. |
| Fabric <b>C</b> | FUS-A-406 | 1/4 yd. |

PILLOW BACK FABRIC  
FUS-A-400 (Fabric **A**) *(Included)*

## CUTTING DIRECTIONS

*1/4" seam allowances are included*  
*WOF means width of fabric.*

- Two (2) 3½' x WOF strips from fabric **A**
- Four (4) 1½' x WOF strips from fabric **B**
- Two (2) 2½' x WOF strips from fabric **C**

## CONSTRUCTION

*Sew all rights sides together with ¼" seam allowance.*

- Strip 1:
- Join the following WOF strips of fabric:
- **A > B > C > B > A**
- Place the template aligning the diagonal lines with fabric **C**.
- Subcut four (4) diamonds. (**DIAGRAM 1**)



DIAGRAM 1

- Assemble Strip 2:
- **B > C > B**
- Subcut Strip 2:
- Two (2) 6¾' x 4½' rectangles.
- one (1) 16½' x 4½' strip.

## ASSEMBLING THE TOP

- Join the diamonds from Strip 1 with the rectangles from Strip 2.
- Join the resulting rectangles to the  $16\frac{1}{2}' \times 4\frac{1}{2}'$  from Strip 2.
- Follow (DIAGRAM 2)

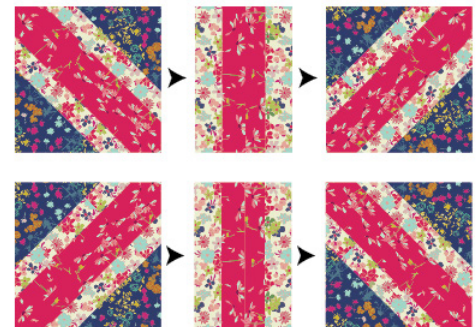


DIAGRAM 2



## PILLOW ASSEMBLY

*Sew rights sides together.*

- Place BACKING FABRIC on a large surface wrong side up. Stretch it with masking tape against that surface.
- Place BATTING on top of backing fabric.
- Place TOP on top of the batting with right side facing up. Smooth away wrinkles using your hands.
- Pin all layers together and baste with basting thread, using long stitches. You can also use safety pins to join the layers.
- Machine or hand quilt starting at the center and working towards the corners. Remember that quilting motifs are a matter of personal preference. Have fun choosing yours!
- After you finished, trim excess of any fabric or batting, squaring the pillow.



[artgalleryfabrics.com](http://artgalleryfabrics.com)

*NOTE: While all possible care has been taken to ensure the accuracy of this pattern, We are not responsible for printing errors or the way in which individual work varies. Please read instructions carefully before starting the construction of this quilt. If desired, wash and iron your fabrics before starting to cut.*

© 2017 Courtesy of Art Gallery Quilts LLC. All Rights Reserved.

## CREATING THE BACK PILLOW

- To make a envelope back for your pillow cut two (2) 11' x 17' rectangles from fabric **A** and fold one 17' side on each rectangle in 1/2' and press and then fold another 1/2' and press.
- Topstitch as close to the edge as possible.
- Place rectangles right side together on top of each other to the front of your pillow and stitch all the way around your pillow at 1/4' seam allowance.
- Clip corners at seam allowance and flip piece to the right side of the fabric.
- Fill pillow with a 16' x 16' pillow form and enjoy!

