



Quilt BLOCK collection

Spider Web Block 13





Quilt BLOCK collection

BLOCK DESIGNED BY AGF STUDIO AGFstudio

Abloom FUSION

FABRICS DESIGNED BY AGF STUDIO



FUS-A-400
FLORET STAINS ABLOOM



FUS-A-401
FASHION SCENT ABLOOM



FUS-A-402
BOHEMIAN CHARMS ABLOOM



FUS-A-403
BED OF DAISIES ABLOOM



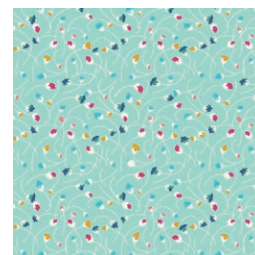
FUS-A-404
VINTAGE RUSH ABLOOM



FUS-A-405
BUDQUETTE ABLOOM



FUS-A-406
HE LOVES ME ABLOOM



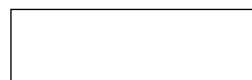
FUS-A-407
NAIVETY ABLOOM



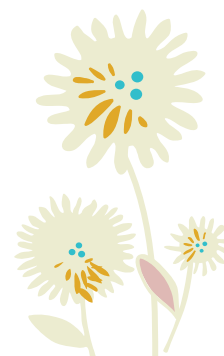
FUS-A-408
LADYLIKE ABLOOM



FUS-A-409
SEED PUFFS ABLOOM



PE-433
SNOW



FINISHED SIZE | 12' × 12'

CUTTING DIRECTIONS

1/4" seam allowances are included.

- One (1) 12 1/2' square from Snow
- Cut strips varying 1' - 2' in wide and at least 6' long. (Perfect scrap buster)

CONSTRUCTION

Sew all rights sides together with 1/4" seam allowance.

- Cut your 12 1/2' square on both diagonals. To get four triangles.

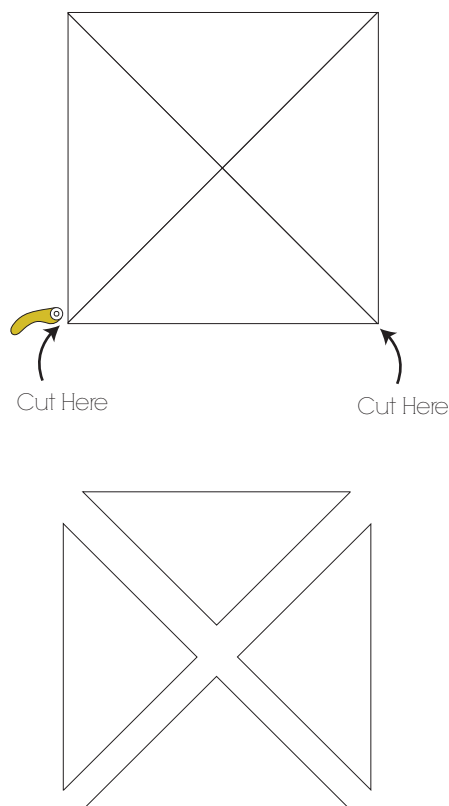


DIAGRAM 1

- Find the center of your triangle and mark 1/4" away on each side of that mark. Measure 6" from the end of your triangle on both sides and mark. Draw a line connecting your marks.
- Now measure 1/4" away from your line. Repeat this same process with your remaining triangles.

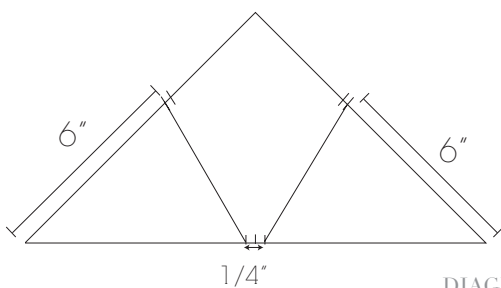


DIAGRAM 2

- Place your first strip right side together to your triangle, lining up the edge of the fabric with the line you drew. Stitch at 1/4". (DIAGRAM 3)

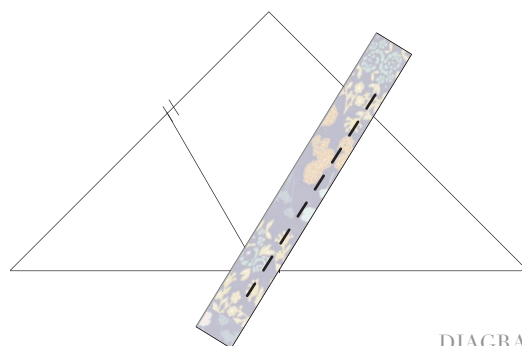


DIAGRAM 3

- Flip open piece and finger press open. Take your next strip and place right sides together, making sure the triangle is tucked out of the way. Stitch at 1/4". (DIAGRAM 4)

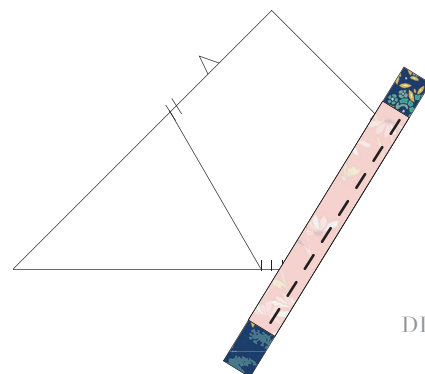


DIAGRAM 4

- Repeat this same process until you cover your whole triangle piece with strips. (DIAGRAM 5)

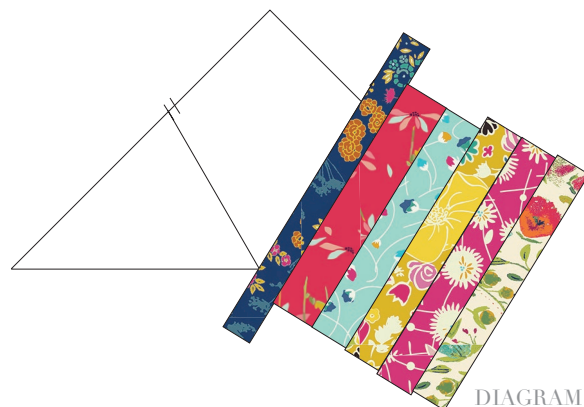


DIAGRAM 5

- Now it's time to use the same process of adding strips to the other side of your triangle.

(DIAGRAM 6)



DIAGRAM 6

- Once you have both sides complete, use your triangle as a guide and trim off excess fabric.
- Repeat this process with all of your triangles.

(DIAGRAM 7)

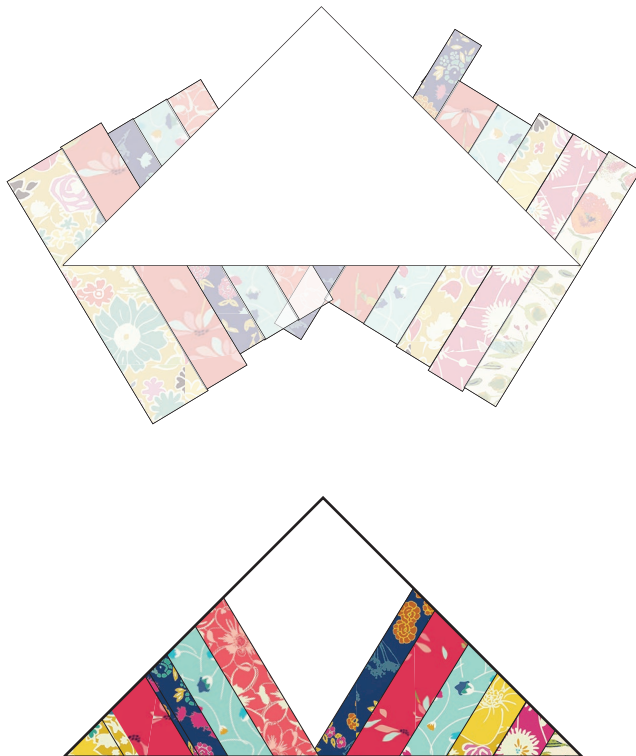


DIAGRAM 7

- Trim excess white triangle to 1/4".
- Sew triangles together matching up seams.



artgalleryfabrics.com

NOTE: While all possible care has been taken to ensure the accuracy of this pattern, We are not responsible for printing errors or the way in which individual work varies. Please read instructions carefully before starting the construction of this quilt. If desired, wash and iron your fabrics before starting to cut.

© 2017 Courtesy of Art Gallery Quilts LLC. All Rights Reserved.