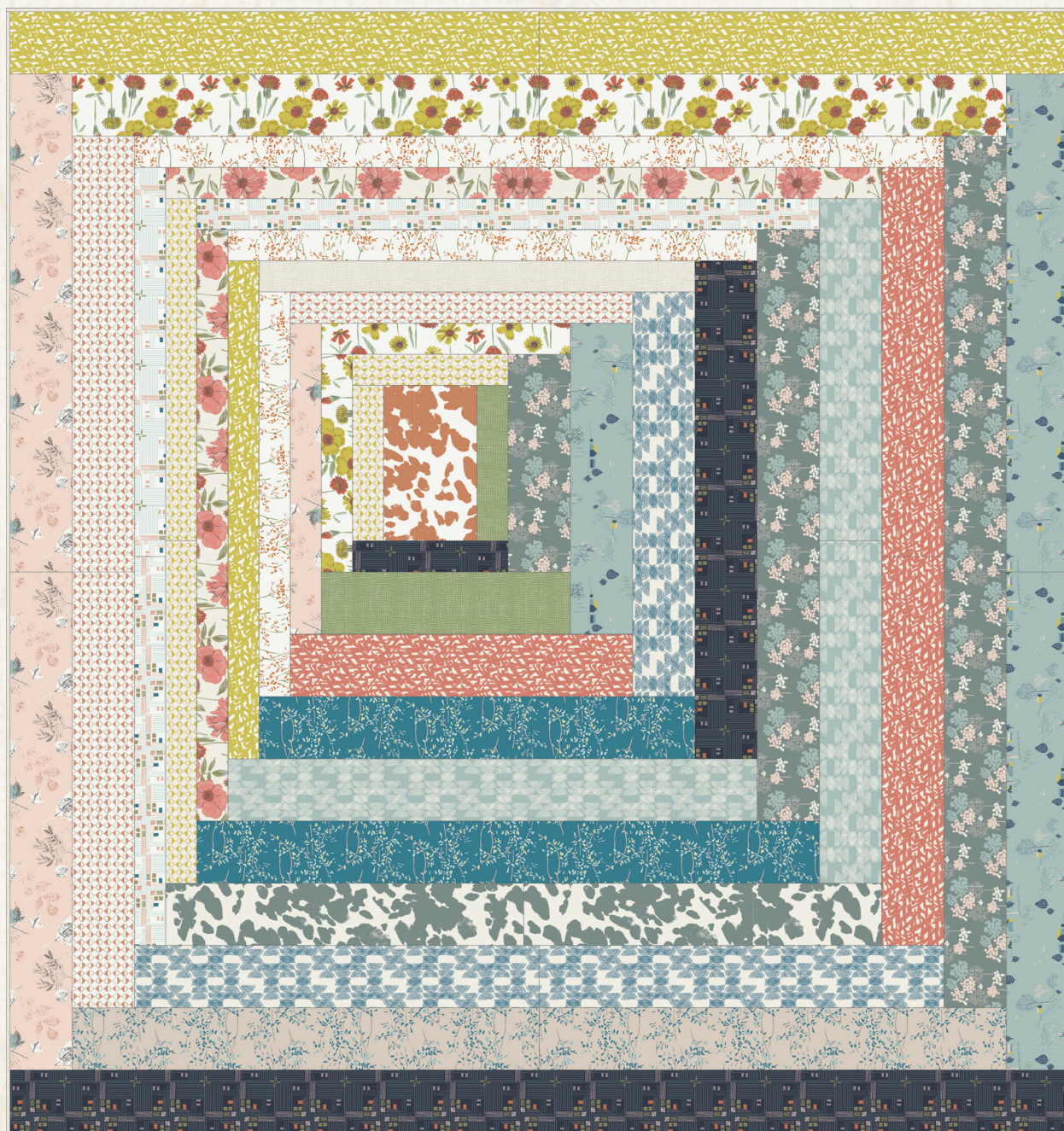


Raise the Roof



FREE PATTERN

XXXXXXXXXXXXXXXXXXXXXXXXXXXX



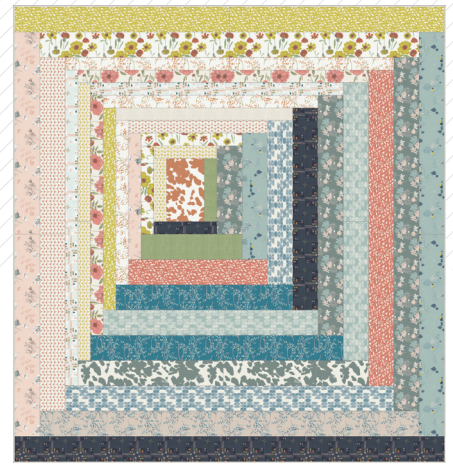


Sharon Holland

QUILT DESIGNED BY SHARON HOLLAND



FABRICS DESIGNED BY SHARON HOLLAND

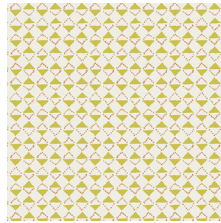


COLOR OPTION

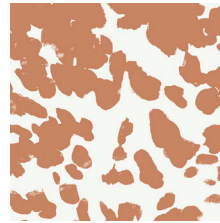
PLANT



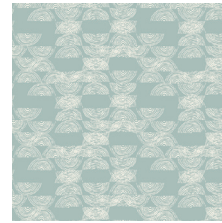
BON-38500
PERENNIAL OPTIMISM



BON-38501
GATHER MELLOW



BON-38502
GRAZING SIENNA



BON-38503
HAYMOW EARLY



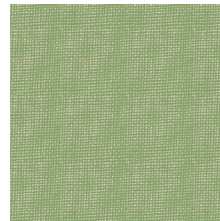
BON-38505
VINE FLORET



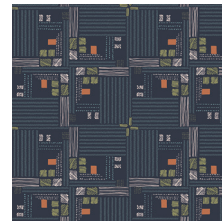
BON-38506
PRAIRIE MAZE



BON-38508
SCENIC BLUE SKY



BON-38509
PLAIN WEAVE THATCH



BON-38510
TARTAN FIELD MIDNIGHT

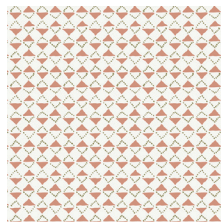


BON-38511
VINE BRAID

HARVEST



BON-48500
PERENNIAL RENEWAL



BON-48501
GATHER RUSTIC



BON-48502
GRAZING BRINDLE



BON-48503
HAYMOW STACK



BON-48504
ABUNDANT GALVANIZE



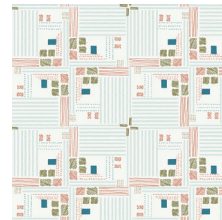
BON-48506
PRAIRIE CRIMSON



BON-48507
ARBORESCENT SEASONS



BON-48509
PLAIN WEAVE FLAX



BON-48510
TARTAN FIELD SNOW



BON-48511
VINE UMBRA



FEEL THE DIFFERENCE © 2017 Courtesy of Art Gallery Quilts LLC. All Rights Reserved.



FINISHED SIZE | 68" x 72"

FABRIC REQUIREMENTS

Fabric A	BON - 38501	¼ yd.
Fabric B	BON - 38509	¼ yd.
Fabric C	BON - 48510	¼ yd.
Fabric D	BON - 48500	½ yd.
Fabric E	BON - 48511	⅓ yd.
Fabric F	BON - 48502	⅓ yd.
Fabric G	BON - 38505	⅓ yd.
Fabric H	BON - 38500	⅔ yd.
Fabric I	BON - 48507	⅔ yd.
Fabric J	BON - 38511	⅔ yd.
Fabric K	BON - 38506	⅔ yd.
Fabric L	BON - 48501	⅔ yd.
Fabric M	BON - 38510	½ yd.
Fabric N	BON - 38508	½ yd.
Fabric O	BON - 48503	½ yd.
Fabric P	BON - 48506	½ yd.
Fabric Q	BON - 38503	½ yd.
Fabric R	BON - 48504	⅝ yd.
Fabric S	BON - 48509	½ yd.
Fabric T	BON - 38502	F8.

BACKING FABRIC

BON - 38505 4 ½ yds. *(Suggested)*

BINDING FABRIC

BON - 48509 (Fabric **S**) *(Included)*

CUTTING PREPERATIONS

Fabric **A**

- Cut two (2) 2½" x WOF strips.
- Subcut the strips into two (2) 2½" x 22½" strips, and two (2) 2½" x 10½" strips.

Fabric **B**

- Cut one (1) 4½" x WOF strip.
- Subcut the strip into one (1) 4½" x 16½" strip, and one (1) 2½" x 10½" strip.

Fabric **C**

- Cut three (3) 2½" x WOF strips.
- Subcut the strips into one (1) 2½" x 40½" strip, and two (2) 2½" x 25½" strips.

Fabric **D**

- Cut three (3) 2½" x WOF strips.
- Subcut the strips into one (1) 2½" x 38½" strip, and two (2) 2½" x 23½" strips.

Fabric **E**

- Cut two (2) 4½" x WOF strips.
- Subcut the strips into one (1) 4½" x 28½" strip, and one (2) 4½" x 40½" strips.

Fabric **F**

- Cut two (2) 4½" x WOF strips.
- Subcut the strips into two (2) 4½" x 23½" strips.

Fabric **G**

- Cut two (2) 4½" x WOF strips.
- Subcut the strips into two (2) 4½" x 30½" strips.

Fabric **H**

- Cut two (2) 4½" x WOF strips, and one (1) 2½" x WOF strip.
- Subcut the strips into two (2) 4½" x 30½" strips, one (1) 2½" x 16½" strip, and one (1) 2½" x 14½" strip.

Fabric **I**

- Cut two (2) 4½" x WOF strips, and one (1) 2½" x WOF.
- Subcut the strips into two (2) 4½" x 32½" strips, and one (1) 2½" x 20½" strips.

Fabric **J**

- Cut four (4) 2 ½" x WOF strips
- Subcut the strips into three (3) 2½" x 26½" strip, and one (1) 2 ½" x 34 ½" strip.

Fabric **K**

- Cut two (2) 4 ½' x WOF strips, and one (1) 2½ x WOF strip.
- Subcut the strips into one (1) 2 ½' x 32 ½' strip, and two (2) 4 ½' x 34 ½' strips.

Fabric **L**

- Cut two (2) 4 ½' x WOF strips, and one (1) 2½ x WOF strip.
- Subcut the strips into one (1) 2 ½' x 22 ½' strip, and two (2) 4 ½' x 28 ½' strips.

Fabric **M**

- Cut three (3) 4 ½' x WOF strips, and one (1) 2½ x WOF strip.
- Subcut the strips into one (1) 2 ½' x 10 ½' strip, two (2) 4 ½' x 34 ½' strips, and one (1) 4½ x 32½.

Fabric **N**

- Cut three (3) 4 ½' x WOF strips.
- Subcut the strips into two (2) 4 ½' x 32 ½' strip, and two (2) 4 ½' x 20 ½' strips.

Fabric **O**

- Cut three (3) 4 ½' x WOF strips.
- Subcut the strips into three (3) 4 ½' x 26 ½' strips.

Fabric **P**

- Cut three (3) 4 ½' x WOF strips.
- Subcut the strips into two (2) 4 ½' x 25 ½' strips, and one (1) 4 ½' x 22 ½' strips.

Fabric **Q**

- Cut three (3) 4 ½' x WOF strips.
- Subcut the strips into one (1) 4 ½' x 34 ½' strip, and two (2) 4 ½' x 22 ½' strips.

Fabric **R**

- Cut four (4) 4 ½' x WOF strips.
- Subcut the strips into two (2) 4½' x 28 ½' strips, one (1) 4 ½' x 38 ½' strips, and one (1) 4½ x 14½ strip.

Fabric **S**

- Cut one (1) 2½' x WOF strip.
- Subcut the strip into one (1) 2½' x 28½' strip.

Fabric **T**

- Cut one (1) 6½' x 10 ½' rectangle.

CONSTRUCTION

Sew all rights sides together with ¼" seam allowance.

- Take one (1) 10½' x 2½' strip from fabric **A**, one (1) 10½' x 6½' rectangle from fabric **T**, and one (1) 10½' x 2½' strip from fabric **B**, and join them by the 10½' side.
- **A > T > B**
- Take one (1) 10½' x 2½' strip from fabric **A**, and one (1) 10½' x 2½' strip from fabric **M**, and join them to the previous block by the 10½' side.
- **A > block > M**
- Take one (1) 14½' x 2½' strip from fabric **H**, and one (1) 14½' x 4½' strip from fabric **R**, and join them to the block by the 14½' side.
- **H > block > R**
- Take one (1) 16½' x 2½' strip from fabric **H**, and one (1) 16½' x 4½' strip from fabric **B**, and join them to the block by the 16½' side.
- **H > block > B**
- Take one (1) 20½' x 2½' strip from fabric **I**, and one (1) 20½' x 4½' strip from fabric **N**, and join them to the block by the 20½' side.
- **I > block > N**
- Take one (1) 22½' x 2½' strip from fabric **L**, and one (1) 22½' x 4½' strip from fabric **P**, and join them to the block by the 22½' side.
- **L > block > P**
- Take one (1) 26½' x 2½' strip from fabric **J**, and one (1) 26½' x 4½' strip from fabric **O**, and join them to the block by the 26½' side.
- **J > block > O**

- Take one (1) $28\frac{1}{2}' \times 2\frac{1}{2}'$ strip from fabric **S**, and one (1) $28\frac{1}{2}' \times 4\frac{1}{2}'$ rectangle from fabric **E**, and join them to the block by the $28\frac{1}{2}'$ side.

- **S** > block > **E**

- Take one (1) $32\frac{1}{2}' \times 2\frac{1}{2}'$ strip from fabric **K**, and one (1) $32\frac{1}{2}' \times 4\frac{1}{2}'$ rectangle from fabric **M**, and join them to the block by the $32\frac{1}{2}'$ side.

- **K** > block > **M**

- Take one (1) $38\frac{1}{2}' \times 2\frac{1}{2}'$ strip from fabric **D**, and one (1) $38\frac{1}{2}' \times 4\frac{1}{2}'$ rectangle from fabric **R**, and join them to the block by the $38\frac{1}{2}'$ side.

- **D** > block > **R**

- Take one (1) $40\frac{1}{2}' \times 2\frac{1}{2}'$ strip from fabric **C**, and one (1) $40\frac{1}{2}' \times 4\frac{1}{2}'$ rectangle from fabric **E**, and join them to the block by the $40\frac{1}{2}'$ side.

- **C** > block > **E**

- Take two (2) $22\frac{1}{2}' \times 2\frac{1}{2}'$ strips from fabric **A**, and join them by the $2\frac{1}{2}'$ side.

- Take two (2) $22\frac{1}{2}' \times 4\frac{1}{2}'$ strips from fabric **Q**, and join them by the $4\frac{1}{2}'$ side.

- Take the $44\frac{1}{2}' \times 2\frac{1}{2}'$ strip from fabric **A**, and the $44\frac{1}{2}' \times 4\frac{1}{2}'$ strip from fabric **Q**, and join them to the block by the $44\frac{1}{2}'$ side.

- **A** > block > **Q**

- Take two (2) $23\frac{1}{2}' \times 2\frac{1}{2}'$ strips from fabric **D**, and join them by the $2\frac{1}{2}'$ side.

- Take two (2) $23\frac{1}{2}' \times 4\frac{1}{2}'$ strips from fabric **F**, and join them by the $4\frac{1}{2}'$ side.

- Take the $46\frac{1}{2}' \times 2\frac{1}{2}'$ strip from fabric **D**, and the $46\frac{1}{2}' \times 4\frac{1}{2}'$ strip from fabric **F**, and join them to the block by the $46\frac{1}{2}'$ side.

- **D** > block > **F**

- Take two (2) $25\frac{1}{2}' \times 2\frac{1}{2}'$ strips from fabric **C**, and join them by the $2\frac{1}{2}'$ side.

- Take two (2) $25\frac{1}{2}' \times 4\frac{1}{2}'$ strips from fabric **P**, and join them by the $4\frac{1}{2}'$ side.

- Take the $50\frac{1}{2}' \times 2\frac{1}{2}'$ strip from fabric **C**, and the $50\frac{1}{2}' \times 4\frac{1}{2}'$ strip from fabric **P**, and join them to the block by the $50\frac{1}{2}'$ side.

- **C** > block > **P**

XXXXXXXXXXXXXXXXXXXXXXXXXXXXXXXXXXXX

- Take two (2) $26\frac{1}{2}' \times 2\frac{1}{2}'$ strips from fabric **J**, and join them by the $2\frac{1}{2}'$ side.

- Take two (2) $26\frac{1}{2}' \times 4\frac{1}{2}'$ strips from fabric **O**, and join them by the $4\frac{1}{2}'$ side.

- Take the $52\frac{1}{2}' \times 2\frac{1}{2}'$ strip from fabric **J**, and the $52\frac{1}{2}' \times 4\frac{1}{2}'$ strip from fabric **O**, and join them to the block by the $52\frac{1}{2}'$ side.

- **J** > block > **O**

- Take two (2) $28\frac{1}{2}' \times 4\frac{1}{2}'$ strips from fabric **L**, and join them by the $4\frac{1}{2}'$ side.

- Take two (2) $28\frac{1}{2}' \times 4\frac{1}{2}'$ strips from fabric **R**, and join them by the $4\frac{1}{2}'$ side.

- Take the $56\frac{1}{2}' \times 4\frac{1}{2}'$ strip from fabric **L**, and the $56\frac{1}{2}' \times 4\frac{1}{2}'$ strip from fabric **R**, and join them to the block by the $56\frac{1}{2}'$ side.

- **L** > block > **R**

- Take two (2) $30\frac{1}{2}' \times 4\frac{1}{2}'$ strips from fabric **H**, and join them by the $4\frac{1}{2}'$ side.

- Take two (2) $30\frac{1}{2}' \times 4\frac{1}{2}'$ strips from fabric **G**, and join them by the $4\frac{1}{2}'$ side.

- Take the $60\frac{1}{2}' \times 4\frac{1}{2}'$ strip from fabric **H**, and the $60\frac{1}{2}' \times 4\frac{1}{2}'$ strip from fabric **G**, and join them to the block by the $60\frac{1}{2}'$ side.

- **H** > block > **G**

- Take two (2) $32\frac{1}{2}' \times 4\frac{1}{2}'$ strips from fabric **I**, and join them by the $4\frac{1}{2}'$ side.

- Take two (2) $32\frac{1}{2}' \times 4\frac{1}{2}'$ strips from fabric **N**, and join them by the $4\frac{1}{2}'$ side.

- Take the $64\frac{1}{2}' \times 4\frac{1}{2}'$ strip from fabric **I**, and the $64\frac{1}{2}' \times 4\frac{1}{2}'$ strip from fabric **N**, and join them to the block by the $64\frac{1}{2}'$ side.

- **I** > block > **N**

- Take two (2) $34\frac{1}{2}' \times 4\frac{1}{2}'$ strips from fabric **K**, and join them by the $4\frac{1}{2}'$ side.

- Take two (2) $34\frac{1}{2}' \times 4\frac{1}{2}'$ strips from fabric **M**, and join them by the $4\frac{1}{2}'$ side.

- Take the $68\frac{1}{2}' \times 4\frac{1}{2}'$ strip from fabric **K**, and the $68\frac{1}{2}' \times 4\frac{1}{2}'$ strip from fabric **M**, and join them to the block by the $68\frac{1}{2}'$ side.

- **K** > block > **M**

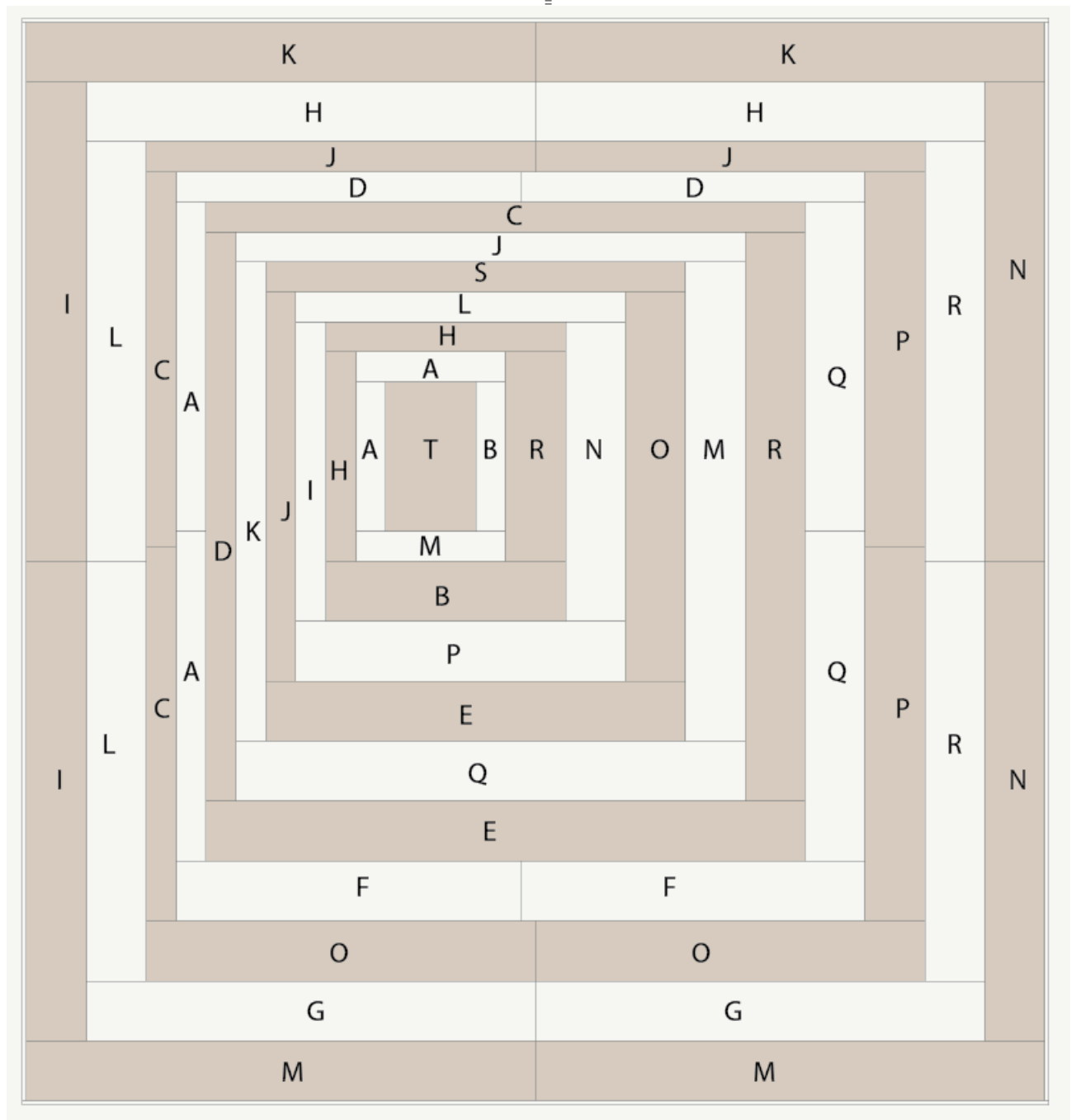


DIAGRAM 1

QUILT ASSEMBLY

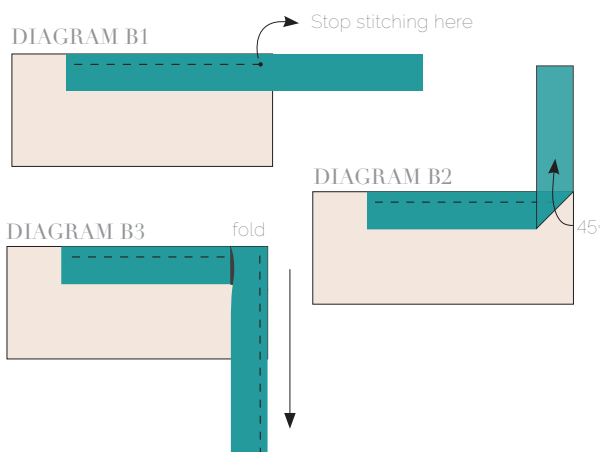
Sew rights sides together

- Place BACKING FABRIC on a large surface wrong side up. Stretch it with masking tape against that surface.
- Place BATTING on top of backing fabric.
- Place TOP on top of the batting with right side facing up. Smooth away wrinkles using your hands.

- Pin all layers together and baste with basting thread, using long stitches. You can also use safety pins to join the layers.
- Machine or hand quilt starting at the center and working towards the corners. Remember that quilting motifs are a matter of personal preference. Have fun choosing yours!
- After you finished, trim excess of any fabric or batting, squaring the quilt to proceed to bind it.

Sew rights sides together.

- Cut enough strips 1 ½" wide by the width of the fabric **S** to make a final strip 290" long. Start sewing the binding strip in the middle of one of the sides of the quilt, placing the strip right side down and leaving an approximated 5" tail. Sew with ¼" seam allowance (using straight stitch), aligning the strip's raw edge with the quilt top's raw edge.
- Stop stitching ¼" before the edge of the quilt (**DIAGRAM B1**). Clip the threads. Remove the quilt from under the machine presser foot. Fold the strip in a motion of 45° and upward, pressing with your fingers (**DIAGRAM B2**). Hold this fold with your finger, bring the strip down in line with the next edge, making a horizontal fold that aligns with the top edge of the quilt (**DIAGRAM B3**). Start sewing at ¼" of the border, stitching all the layers. Do the same in the four corners of the quilt.
- Stop stitching before you reach the last 5 or 6 inches. Cut the threads and remove the quilt from under the machine presser foot. Lay the loose ends of the binding flat along the quilt edge, folding the ends back on themselves where they meet. Press them together to form a crease. Using this crease as the stitching line, sew the two open ends of the binding with right sides together (you can help yourself marking with a pencil if the crease is difficult to see).
- Trim seam to ¼" and press open. Complete the sewing. Turn binding to back of the quilt, turn raw edge inside and stitch by hand using blind stitch.



Congratulations
& enjoy



artgalleryfabrics.com

NOTE: While all possible care has been taken to ensure the accuracy of this pattern, We are not responsible for printing errors or the way in which individual work varies. Please read instructions carefully before starting the construction of this quilt. If desired, wash and iron your fabrics before starting to cut.

© 2017 Courtesy of Art Gallery Quilts LLC. All Rights Reserved.