

Arbor

AGFstudio



FUSIONS

by AGF

FREE PATTERN

XXXXXXXXXXXXXXXXXXXXXXXXXXXX

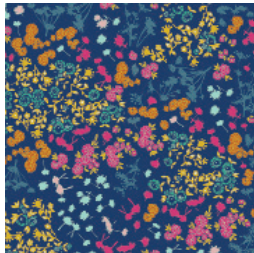
Arbor

QUILT DESIGNED BY AGF STUDIO AGFstudio



Abloom FUSION

FABRICS DESIGNED BY AGF STUDIO



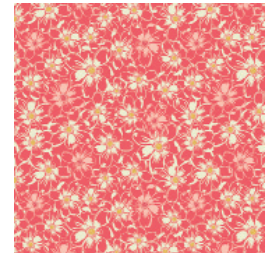
FUS-A-400
FLORET STAINS ABLOOM



FUS-A-401
FASHION SCENT ABLOOM



FUS-A-402
BOHEMIAN CHARMS ABLOOM



FUS-A-403
BED OF DAISIES ABLOOM



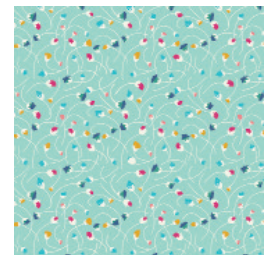
FUS-A-404
VINTAGE RUSH ABLOOM



FUS-A-405
BUDQUETTE ABLOOM



FUS-A-406
HE LOVES ME ABLOOM



FUS-A-407
NAIVETY ABLOOM



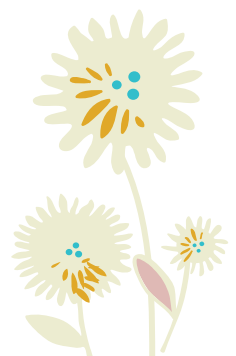
FUS-A-408
LADYLIKE ABLOOM



FUS-A-409
SEED PUFFS ABLOOM



PE-465
DENIM BLUE





FINISHED SIZE | 62" x 62"

FABRIC REQUIREMENTS

Fabric A	FUS-A-400	¼ yd.
Fabric B	FUS-A-401	½ yd.
Fabric C	FUS-A-402	¼ yd.
Fabric D	FUS-A-403	¾ yd.
Fabric E	FUS-A-404	¼ yd.
Fabric F	FUS-A-406	⅝ yd.
Fabric G	FUS-A-407	¾ yd.
Fabric H	FUS-A-408	¾ yd.
Fabric I	FUS-A-409	¾ yd.
Fabric J	PE-465	3 ¾ yd.

BACKING FABRIC

FUS-A-405 4 yds.

BINDING FABRIC

Fabric **F**- Included

CUTTING DIRECTIONS

¼" seam allowances are included for all pieces except leaves.

**All leaves are cut by pressing the leaf template to the fabric and cutting around the leaf with a ¼" seam allowance for turning. See instructions.*

- Fabric **A**: Six (6) leaves
- Fabric **B**: Nine (9) leaves, Fifteen (15) 1 ½" x 6 ½" strips
- Fabric **C**: Six (6) leaves
- Fabric **D**: Nine (9) leaves, Nine (9) 1 ½" x 6 ½" strips
- Fabric **E**: Six (6) leaves, Three (3) 1 ½" x 6 ½" strips
- Fabric **F**: Nine (9) leaves.
- Fabric **G**: Nine (9) leaves, Six (6) 1 ½" x 6 ½" strips
- Fabric **H**: Nine (9) leaves.
- Fabric **I**: Nine (9) leaves, Three (3) 1 ½" x 6 ½" strips
- Fabric **J**: Seventy-two (72) 6 ½" x 6 ½" squares, Two (2) 6" x 64" strips, Two (2) 4" x 54 ½" strips, Three (3) 2 ½" x 54 ½" strips

CONSTRUCTION

Sew all rights sides together with ¼" seam allowance.

Freezer Paper Appliqué Method

- © Print leaf template, cut out and trace onto the matte paper side of freezer paper and cut out. Make at least three templates to begin with. Templates can be used multiple times, cut new templates as needed if your templates start to lose their stickiness. You can press two templates together (sticky side to paper side so that one side still has stick) to make them double thickness as well if you prefer to work with a thicker template.
- © Press the template to the wrong side of the fabric, then cut around the template, leaving a ¼" seam allowance.
- © With the template facing up start to press the edges over the paper, you can spray with starch to help the fabric stay turned after pressing. After all edges are turned and fabric has cooled, peel off the paper and reuse.
- © Align the leaf appliques to the diagonal of the Fabric **J** squares and sew in place. You can mark the diagonal by either pressing the squares in half, or by drawing a line with a fabric marking pen diagonally through the square. Make sure to align the leaf in the center of the square, leaving the tips out of the ¼" seam allowance on the square.
- © Continue until all fabric leaves have been sewn to fabric **J** squares.

BLOCK CONSTRUCTION

- © Once you have sewn all the leaves to the backing squares gather the short strips and begin to assemble them into the Leaf-Stem-Leaf combinations as shown in the diagram.
- © Letters in the combination diagrams stand for the fabric letters.
- © Make three of each combination. (DIAGRAM 1)

DIAGRAM 1

Combination 1 (x3)



Combination 7 (x3)



Combination 2 (x3)



Combination 8 (x3)



Combination 3 (x3)



Combination 9 (x3)



Combination 4 (x3)



Combination 10 (x3)



Combination 5 (x3)



Combination 11 (x3)



Combination 6 (x3)



Combination 12 (x3)

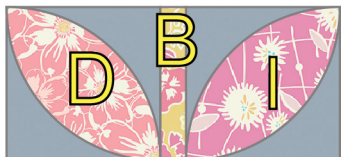


DIAGRAM 1

© Arrange the combinations into columns according to the assembly diagram (DIAGRAM 2) and sew the blocks together.

© Sew the columns together with the three $2\frac{1}{2}'' \times 54\frac{1}{2}''$ strips in between them as shown.

© Sew the two $4'' \times 54\frac{1}{2}''$ border strips to the sides of the quilt.

© Sew the $6'' \times 64''$ border strips to the top and bottom. (DIAGRAM 2)

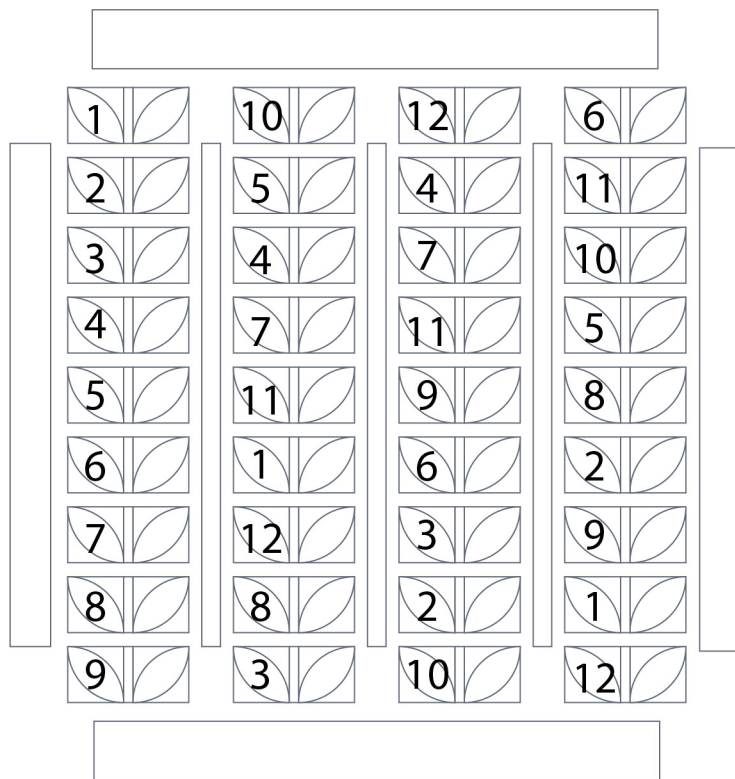


DIAGRAM 2

© Quilt, then square off to $62''$ square and bind.

QUILT ASSEMBLY

Sew rights sides together.

© Place BACKING FABRIC on a large surface wrong side up. Stretch it with masking tape against that surface.

© Place BATTING on top of backing fabric.

© Place TOP on top of the batting with right side facing up. Smooth away wrinkles using your hands.

© Pin all layers together and baste with basting thread, using long stitches. You can also use safety pins to join the layers.

© Machine or hand quilt starting at the center and working towards the corners. Remember that quilting motifs are a matter of personal preference. Have fun choosing yours!

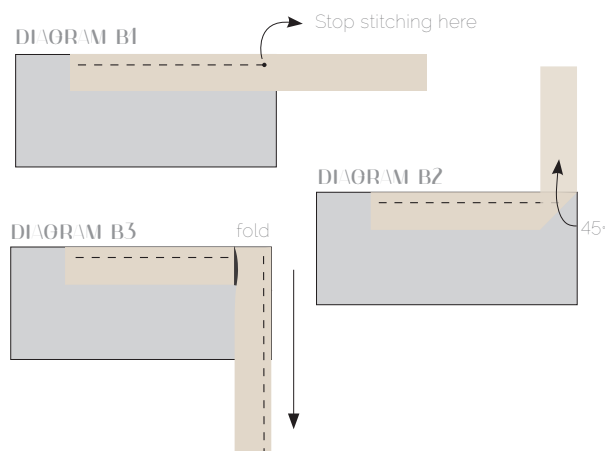
© After you finish, trim excess of any fabric or batting, squaring the quilt to proceed to bind it.

BINDING

Sew rights sides together.

- Cut six strips $1\frac{1}{2}$ " wide by the width of the fabric **F** to make a final strip 258" long. Start sewing the binding strip in the middle of one of the sides of the quilt, placing the strip right side down and leaving an approximated 5" tail. Sew with $\frac{1}{4}$ " seam allowance (using straight stitch), aligning the strip's raw edge with the quilt top's raw edge.

© Stop stitching $\frac{1}{4}$ " before the edge of the quilt (**DIAGRAM B1**). Clip the threads. Remove the quilt from under the machine presser foot. Fold the strip in a motion of 45° and upward, pressing with your fingers (**DIAGRAM B2**). Hold this fold with your finger, bring the strip down in line with the next edge, making a horizontal fold that aligns with the top edge of the quilt (**DIAGRAM B3**). Start sewing at $\frac{1}{4}$ " of the border, stitching all the layers. Do the same in the four corners of the quilt.



- © Stop stitching before you reach the last 5 or 6 inches. Cut the threads and remove the quilt from under the machine presser foot. Lay the loose ends of the binding flat along the quilt edge, folding the ends back on themselves where they meet. Press them together to form a crease. Using this crease as the stitching line, sew the two open ends of the binding with right sides together (you can help yourself marking with a pencil if the crease is difficult to see).
- © Trim seam to $\frac{1}{4}$ " and press open. Complete the sewing. Turn binding to back of the quilt, turn raw edge inside and stitch by hand using blind stitch.



artgalleryfabrics.com

NOTE: While all possible care has been taken to ensure the accuracy of this pattern, We are not responsible for printing errors or the way in which individual work varies. Please read instructions carefully before starting the construction of this quilt. If desired, wash and iron your fabrics before starting to cut.

©2017 Courtesy of Art Gallery Quilts LLC. All Rights Reserved.





Leaf Template

Seam allowance
not included