

VOLUME AGE



capsules
by AGF

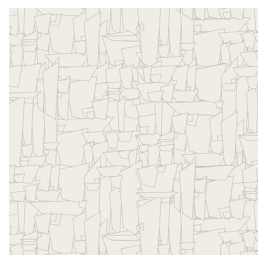
FREE PATTERN

XXXXXXXXXXXXXXXXXXXXXXXXXXXX

VOLUME

lower
THE volume

FABRICS DESIGNED BY AGF STUDIO



CAP-V-2000
CLEAR REFLECTIONS



CAP-V-2001
SILENT TYPEWRITER



CAP-V-2002
CRISP CRISSCROSS



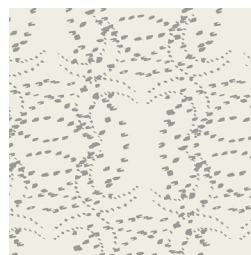
CAP-V-2003
SIMPLE GROWTH



CAP-V-2004
CLOUD PARENTHESIS



CAP-V-2005
FRESH MINIATURE



CAP-V-2006
POWDER DRIZZLE



CAP-V-2007
SMOOTH LOCOMOTION



CAP-V-2008
RUNNING PAINT



CAP-V-2009
QUIET DOWNTOWN



FEEL THE DIFFERENCE © 2017 Courtesy of Art Gallery Quilts LLC. All Rights Reserved.

Voyage

FINISHED SIZE | 48" x 60"

FABRIC REQUIREMENTS

Fabric A	CAP-V-2009	1 1/3 yd.
Fabric B	CAP-V-2002	1 7/8 yd.
Fabric C	SE-606	1 1/4 yd.
Fabric D	PE-430	7/8 yd.
Fabric E	PE-469	1 1/8 yd.

BACKING FABRIC

CAP-V-2004 1 1/2 yd. *(Suggested)*

BINDING FABRIC

CAP-V-2009 (Fabric **A**) *(included)*

CUTTING DIRECTIONS

*1/4" seam allowances are included.
WOF means width of fabric.*

Two (2) 13 3/4" x WOF strips from fabrics **A, C, E**

Three (3) 13 3/4" x WOF strips from fabric **B**

One (1) 13 3/4" x WOF strip from fabric **D**

Two (2) 3 1/2" x WOF strips from fabrics **A, E**

Six (6) 3 1/2" x WOF strips from fabric **B**

Three (3) 3 1/2" x WOF strips from fabric **D**

CONSTRUCTION

Sew all rights sides together with 1/4" seam allowance.

- Subcut the 13 3/4" x WOF strips from fabric **A** into six (6) 13 3/4" x 13 3/4" squares.
- Subcut the 13 3/4" x WOF strips from fabric **B** into seven (7) 13 3/4" x 13 3/4" squares.
- Subcut the 13 3/4" x WOF strips from fabric **C** into five (5) 13 3/4" x 13 3/4" squares.

- Subcut the 13 3/4" x WOF strips from fabric **D** into three (3) 13 3/4" x 13 3/4" squares.
- Subcut the 13 3/4" x WOF strips from fabric **E** into five (5) 13 3/4" x 13 3/4" squares.
- Subcut the 3 1/2" x WOF strips from fabric **A** into twenty four (24) 3 1/2" x 3 1/2" squares.
- Subcut the 3 1/2" x WOF strips from fabric **B** into seventy two (72) 3 1/2" x 3 1/2" squares.
- Subcut the 3 1/2" x WOF strips from fabric **C** into thirty six (36) 3 1/2" x 3 1/2" squares.
- Subcut the 3 1/2" x WOF strips from fabric **D** into thirty six (36) 3 1/2" x 3 1/2" squares.
- Subcut the 3 1/2" x WOF strips from fabric **E** into twenty four (24) 3 1/2" x 3 1/2" squares.

Magic 8 Method.

- This blanket is made of ninety six (96) half square triangles and one hundred and ninety two (192) corner square triangles.
- We are going to use the Magic 8 method to create eight (8) half square triangle units at once.

Block 1A



x 24

DIAGRAM 1

- We need twenty four (24) Block 1A, so we need to repeat the Magic 8 Method three times.
- Take one (1) 13 7/8" x 13 7/8" square from fabric **A**, and one (1) 13 7/8" x 13 7/8" square from fabric **E**



DIAGRAM 2

- Place both pieces together face to face, and draw diagonal lines.
- Stitch a quarter of an inch of each side as shown in Diagram 2.

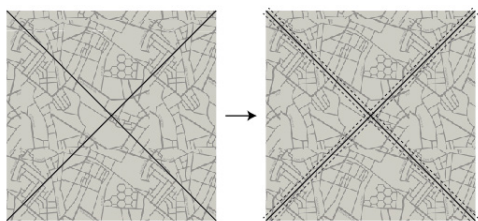


DIAGRAM 3

- Cut vertically right down the center.

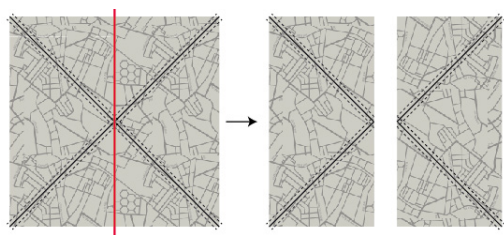


DIAGRAM 4

- Cut horizontally both pieces.

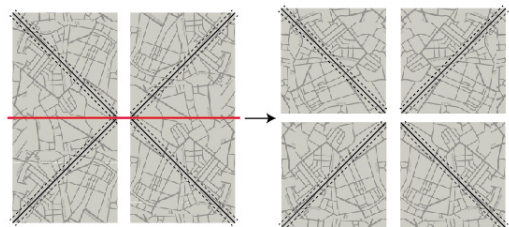


DIAGRAM 5

- Cut on the drawn lines.

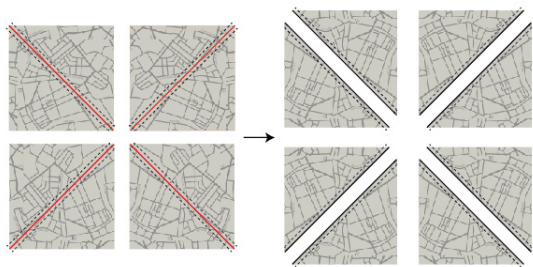


DIAGRAM 6

- Open and press your eight squares. They should measure 6 1/2" x 6 1/2",



DIAGRAM 7

x x

Block B1



x 12

DIAGRAM 8

- We need twenty twelve (12) Block B1, so we need to repeat the Magic 8 Method twice using fabrics **B** and **C**
- Since $8 \times 2 = 16$, you will have 4 blocks extra.

Block C1



x 24

DIAGRAM 9

- We need twenty four (24) Block C1, so we need to repeat the Magic 8 Method three times using fabrics **A** and **C**

Block D1



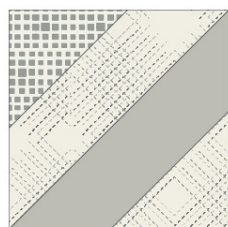
x 24

DIAGRAM 10

- We need twenty four (24) Block D1, so we need to repeat the Magic 8 Method three times using fabrics **B** and **D**

Block E2

- Take Block E1 and one (1) $3\frac{1}{2}' \times 3\frac{1}{2}'$ square from fabric **C** and one (1) $3\frac{1}{2}' \times 3\frac{1}{2}'$ square from fabric **B**.
- Attach the small squares as corner square triangles to make Block E2, as shown on Diagram 18. Make 12.

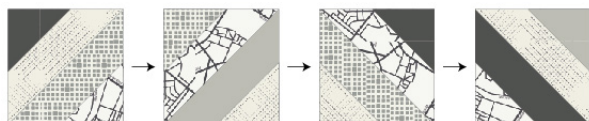


Block D2
x 12

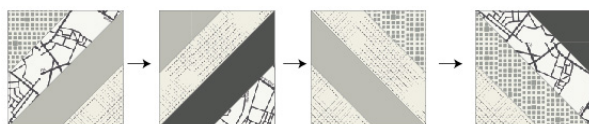
DIAGRAM 18

Main Block

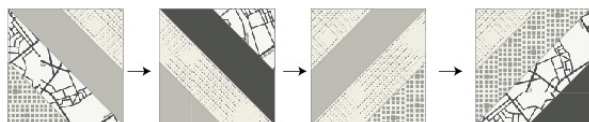
- Saw 4 rows of blocks.
- Row 3 is the vertical mirror image of Row 2
- Row 4 is the vertical mirror image of Row 1
- Follow Diagram 19 for block placement and attachment.



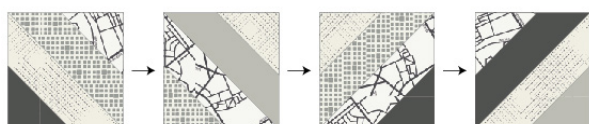
Row 1: $B_2 > A_2 > C_2 > D_2$



Row 2: A2>D2>E2>C2



Row 3: A2>D2>E2>C2



Row 4: B2>A2>C2>D2

DIAGRAM 19



- Saw Row1 > Row2 > Row3 > Row4 to get the main block.

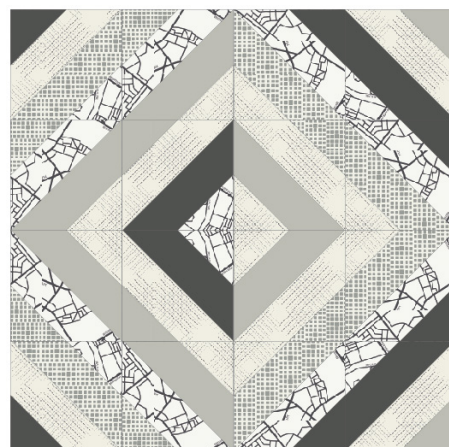
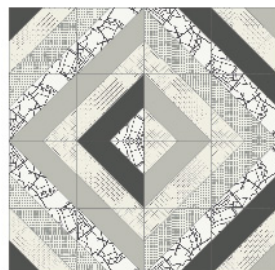


DIAGRAM 20

- Make six (6) main blocks.
- Arrange them into two columns of three (3) blocks each, and join them.
- Make sure column 2 is the vertical mirror image of column 1, as shown in Diagram 21.

Column 1



Column 2

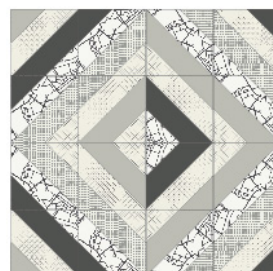
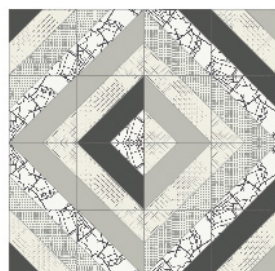
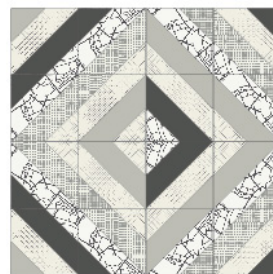
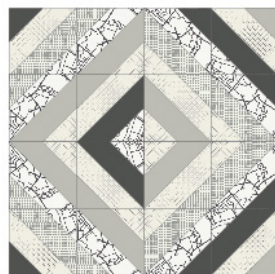
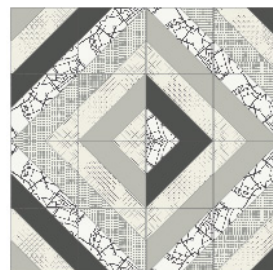


DIAGRAM 21

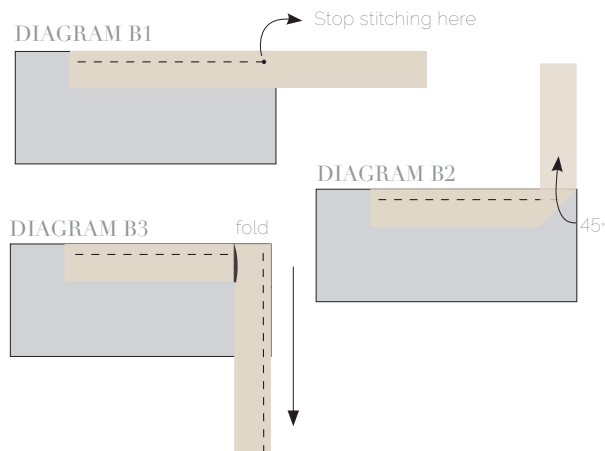
QUILT ASSEMBLY

Sew rights sides together.

- Place BACKING FABRIC on a large surface wrong side up. Stretch it with masking tape against that surface.
- Place BATTING on top of backing fabric.
- Place TOP on top of the batting with right side facing up. Smooth away wrinkles using your hands.
- Pin all layers together and baste with basting thread, using long stitches. You can also use safety pins to join the layers.
- Machine or hand quilt starting at the center and working towards the corners. Remember that quilting motifs are a matter of personal preference. Have fun choosing yours!
- After you finished, trim excess of any fabric or batting, squaring the quilt to proceed to bind it.

BINDING

Sew rights sides together.



- Cut enough strips $1\frac{1}{2}$ ' wide by the width of the fabric **A** to make a final strip 226" long. Start sewing the binding strip in the middle of one of the sides of the quilt, placing the strip right side down and leaving an approximated 5' tail. Sew with $\frac{1}{4}$ " seam allowance (using straight stitch), aligning the strip's raw edge with the quilt top's raw edge.
- Stop stitching $\frac{1}{4}$ ' before the edge of the quilt (**DIAGRAM B 1**). Clip the threads. Remove the quilt from under the machine presser foot. Fold the strip in a motion of 45° and upward, pressing with your fingers (**DIAGRAM B2**). Hold this fold with your finger, bring the strip down in line with the next edge, making a horizontal fold that aligns with the top edge of the quilt (**DIAGRAM B3**). Start sewing at $\frac{1}{4}$ ' of the border, stitching all the layers. Do the same in the four corners of the quilt.
- Stop stitching before you reach the last 5 or 6 inches. Cut the threads and remove the quilt from under the machine presser foot. Lay the loose ends of the binding flat along the quilt edge, folding the ends back on themselves where they meet. Press them together to form a crease. Using this crease as the stitching line, sew the two open ends of the binding with right sides together (you can help yourself marking with a pencil if the crease is difficult to see).
- Trim seam to $\frac{1}{4}$ " and press open. Complete the sewing. Turn binding to back of the quilt, turn raw edge inside and stitch by hand using blind stitch.



artgalleryfabrics.com

NOTE: While all possible care has been taken to ensure the accuracy of this pattern, We are not responsible for printing errors or the way in which individual work varies. Please read instructions carefully before starting the construction of this quilt. If desired, wash and iron your fabrics before starting to cut.

© 2017 Courtesy of Art Gallery Quilts LLC. All Rights Reserved.