

# piecing **PLAIDS**



capsules  
by AGF



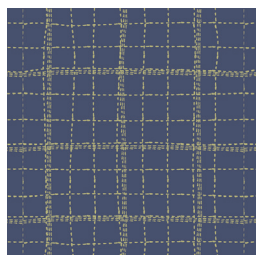
# piecing PLAIDS

AGFstudio

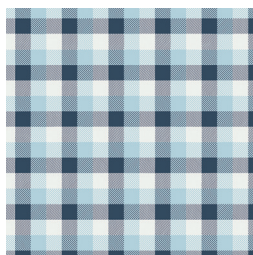


## mad PLAID

FABRICS DESIGNED BY AGF STUDIO



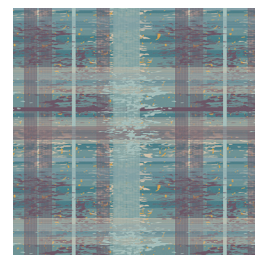
CAP-P-1000  
DEEP SEA PLAID



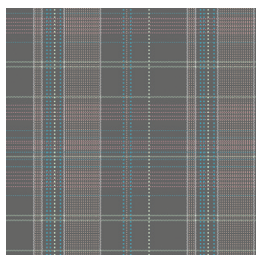
CAP-P-1001  
SUMMER SKIES PLAID



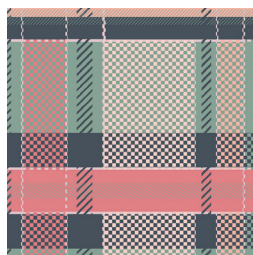
CAP-P-1002  
BLUEBERRY COBBLER PLAID



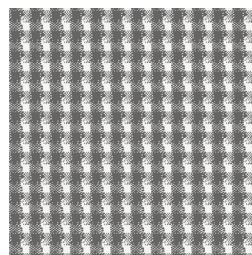
CAP-P-1003  
BREEZE WASH PLAID



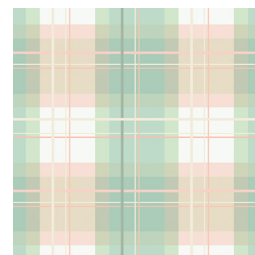
CAP-P-1004  
SECRET WAYS PLAID



CAP-P-1005  
CORAL VIEWS PLAID



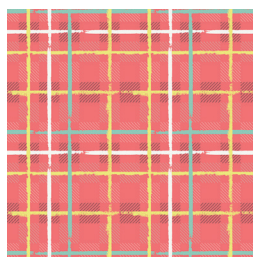
CAP-P-1006  
CLASSIC MADEMOISELLE PLAID



CAP-P-1007  
AFTERNOON TEA PLAID



CAP-P-1008  
STRAWBERRY TUXEDO PLAID



CAP-P-1009  
ELECTRIC WATERMELON PLAID



FEEL THE DIFFERENCE © 2017 Courtesy of Art Gallery Quilts LLC. All Rights Reserved.

# piecing PLAIDS

FINISHED SIZE | 11' x 6'

## FABRIC REQUIREMENTS

Fabric <b>A</b>	CAP-P-1005	F8.
Fabric <b>B</b>	P.E 467	F8.
Fabric <b>C</b>	P.E 471	F8.
Fabric <b>D</b>	P.E 452	F8.

**BACKING FABRIC**  
CAP-P-1005 included (*suggested*)

## CUTTING DIRECTIONS

*¼" seam allowances are included.  
WOF means width of fabric.*

- Two (2) 7' x 7' squares of fabric **A**
- One (1) 7' x 7' square of fabric **C**
- One (1) 7' x 7' square of fabric **B**
- One (1) 1½' x 6½' strip of fabric **D**
- One (1) 11½' x 6½' rectangle of fabric **A**
- Two (2) 11½' x 6½' rectangles of fabric **B**

## CONSTRUCTION

*Sew all rights sides together with ¼" seam allowance.*

- Paper piecing is the method that is going to be used to construct the clutch.
- Below is the template for paper piecing.

XXXXXXXXXXXXXXXXXXXXXXXXXXXX

- First take the 7' x 7' of fabric **C** and place it face up right over area 1.
- Next take the 7' x 7' of fabric **A** and place it face to face with fabric **C**. Use the line between 1. and 2. as a reference to keep fabric **A** at a ¼' from line.
- Sew directly on line. Open and press.

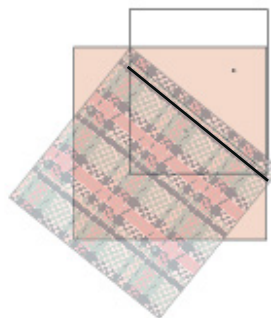


DIAGRAM 1

- Repeat with same instructions as above now using the 7' x 7' square of fabric **B** and 7' x 7' square of fabric **A**.

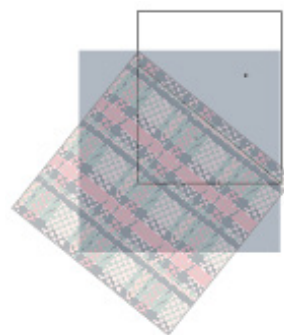


DIAGRAM 2

- Next your going to cut around the edges leaving ¼' for sewing.

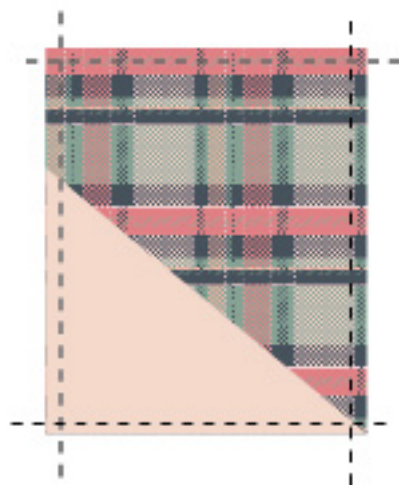


DIAGRAM 3





