

XXXXXX



XXXXXXXXXXXXXXXXXXXXXXXXXXXX

by AGF

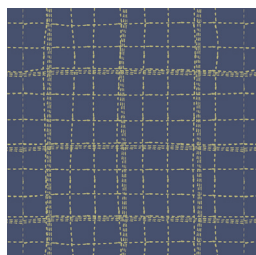
PASSAGE

QUILT DESIGNED BY AGF STUDIO *AGFstudio*

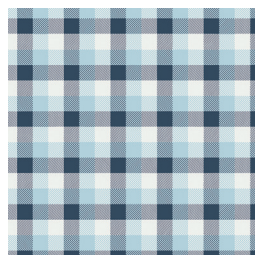


mad PLAID

FABRICS DESIGNED BY AGF STUDIO



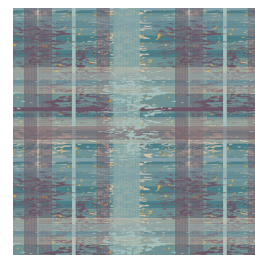
CAP-P-1000
DEEP SEA PLAID



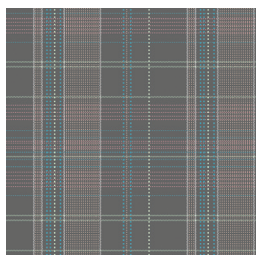
CAP-P-1001
SUMMER SKIES PLAID



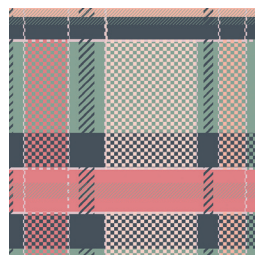
CAP-P-1002
BLUEBERRY COBBLER PLAID



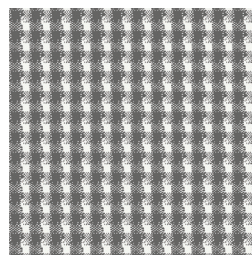
CAP-P-1003
BREEZE WASH PLAID



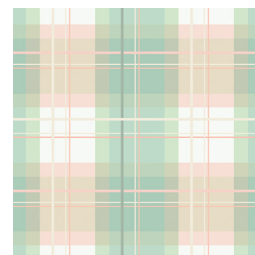
CAP-P-1004
SECRET WAYS PLAID



CAP-P-1005
CORAL VIEWS PLAID



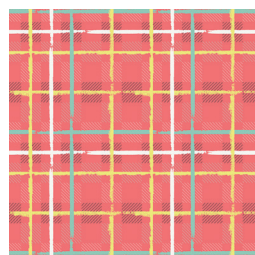
CAP-P-1006
CLASSIC MADEMOISELLE PLAID



CAP-P-1007
AFTERNOON TEA PLAID



CAP-P-1008
STRAWBERRY TUXEDO PLAID



CAP-P-1009
ELECTRIC WATERMELON PLAID



PASSAGE

FINISHED SIZE | 64" x 66"

FABRIC REQUIREMENTS

Fabric A	CAP-P-1008	$\frac{7}{8}$ yd.
Fabric B	CAP-P-1004	$1\frac{3}{4}$ yd.
Fabric C	CAP-P-1003	$\frac{7}{8}$ yd.
Fabric D	CAP-P-1007	$1\frac{7}{8}$ yd.
Fabric E	CAP-P-1005	$\frac{3}{8}$ yd.
Fabric F	CAP-P-1009	$\frac{3}{4}$ yd.
Fabric G	CAP-P-1002	$\frac{1}{4}$ yd.

BACKING FABRIC

CAP-P-1008 4 yd (suggested)

BINDING FABRIC

Fabric F (included)

CUTTING DIRECTIONS

$\frac{1}{4}$ " seam allowances are included.
WOF means width of fabric.

- Three (3) $8\frac{1}{2}$ " x $25\frac{1}{2}$ " rectangles from fabric A
- Four (4) $4\frac{1}{2}$ " x $25\frac{1}{2}$ " rectangles from fabric B
- Three (3) $8\frac{1}{2}$ " x 27" rectangles from fabric B
- One (1) $8\frac{1}{2}$ " x 21" rectangles from fabric B
- Four (4) $4\frac{1}{2}$ " x 27" rectangles from fabric C
- One (1) $4\frac{1}{2}$ " x 21" rectangle from fabric C
- One (1) $3\frac{1}{2}$ " x 27" rectangle from fabric C
- One (1) $20\frac{1}{2}$ " x 27" rectangle from fabric D
- Two (2) $12\frac{1}{2}$ " x 27" rectangles from fabrics D
- Two (2) $4\frac{1}{2}$ " x 27" rectangle from fabrics D
- One (1) $4\frac{1}{2}$ " x 21" rectangle from fabric D
- One (1) $4\frac{1}{2}$ " x 27" rectangle from fabric E
- One (1) $4\frac{1}{2}$ " x $25\frac{1}{2}$ " rectangle from fabric E
- One (1) $8\frac{1}{2}$ " x 15" rectangle from fabric F
- One (1) $4\frac{1}{2}$ " x 15" rectangle from fabric F
- One (1) $8\frac{1}{2}$ " x 10" rectangle from fabric F
- One (1) $4\frac{1}{2}$ " x 10" rectangle from fabric F
- One (1) $2\frac{1}{2}$ " x 10" rectangle from fabric F

XXXXXXXXXXXXXXXXXXXXXXXXXXXXXXXXXXXX

Two (2) $4\frac{1}{2}$ " x 5" from fabric F

One (1) $8\frac{1}{2}$ " x 5" from fabric F

Two (2) $4\frac{1}{2}$ " x 5" from fabric G

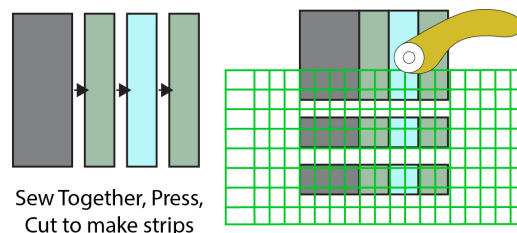
Two (2) $4\frac{1}{2}$ " x 15" from fabric G

One (1) $4\frac{1}{2}$ " x 10" rectangle from fabric G

One (1) $3\frac{1}{2}$ " x 10" rectangle from fabric G

CONSTRUCTION

Sew all rights sides together with $\frac{1}{4}$ " seam allowance.



Sew Together, Press,
Cut to make strips

DIAGRAM 1

- To prepare the strips for the construction of the quilt, you will sew together the rectangles as indicated in each step, and then cross-cut them into strips. See Diagram 1.

Block A

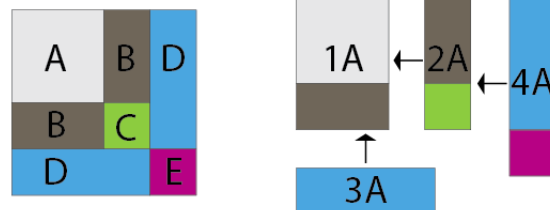


DIAGRAM 2

- Start by making six blocks A:
- Strip 1A
- Do this step twice: Piece together: $8\frac{1}{2}$ " x $25\frac{1}{2}$ " rectangle, Fabric A, > $4\frac{1}{2}$ " x $25\frac{1}{2}$ ", Fabric B.
- Cross-cut the rectangles every $8\frac{1}{2}$ " to make six strips as shown on Diagram 3.

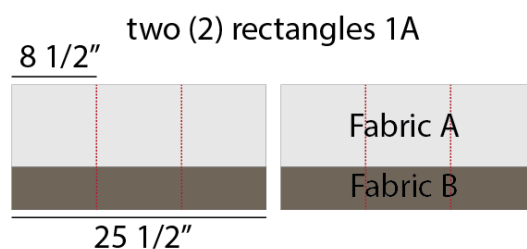
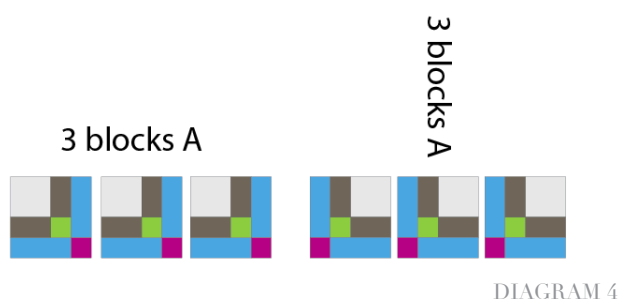


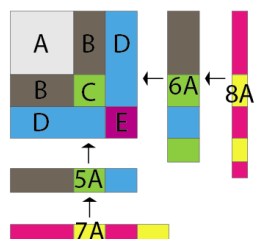
DIAGRAM 3

- Strip 2A
- Piece together: $8\frac{1}{2}" \times 27"$ rectangle, Fabric **B**, $> 4\frac{1}{2}" \times 27"$, Fabric **C**.
- Cross-cut every $4\frac{1}{2}"$ to make six strips.
- Strip 3A
- Take a $12\frac{1}{2}" \times 27"$ rectangle, Fabric **D**.
- Cross-cut every $4\frac{1}{2}"$ to make six strips
- Strip 4A
- Piece together: $12\frac{1}{2}" \times 27"$ rectangle, Fabric **D** $> 4\frac{1}{2}" \times 27"$ rectangle, Fabric **E**
- Cross-cut every $4\frac{1}{2}"$ to make six strips.

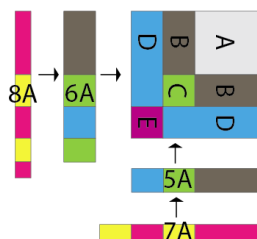


- Now that you have six blocks A, turn three blocks 90° clockwise as shown in Diagram 4.
- Continuing to create Blocks A1, A2, A3, and A4.

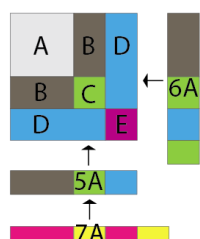
Block A1 (make 2)



Block A2 (make 2)



Block A3 (make 1)



Block A4 (make 1)

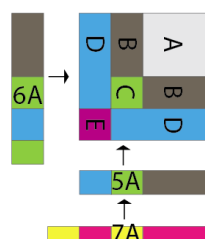
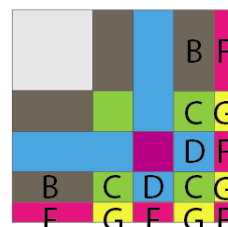


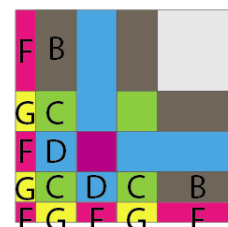
DIAGRAM 5

- Strip 5A
- Piece together: $8\frac{1}{2}" \times 21"$ rectangle, Fabric **B** $> 4\frac{1}{2}" \times 21"$ rectangle, Fabric **C** $> 4\frac{1}{2}" \times 21"$ rectangle, Fabric **D**
- Cross-cut every $3\frac{1}{2}"$ to make six strips
- Strip 6A
- Piece together: $8\frac{1}{2}" \times 27"$ rectangle, Fabric **B** $> 4\frac{1}{2}" \times 27"$ rectangle, Fabric **C** $> 4\frac{1}{2}" \times 27"$ rectangle, Fabric **D** $> 3\frac{1}{2}" \times 27"$ rectangle, Fabric **C**
- Cross-cut every $4\frac{1}{2}"$ to make six strips
- Strip 7A
- Piece together: $8\frac{1}{2}" \times 15"$ rectangle, Fabric **F** $> 4\frac{1}{2}" \times 15"$ rectangle, Fabric **G** $> 4\frac{1}{2}" \times 15"$ rectangle, Fabric **F** $> 4\frac{1}{2}" \times 15"$ rectangle, Fabric **G**
- Cross-cut every $2\frac{1}{2}"$ to make six strips
- Strip 8A
- Piece together: $8\frac{1}{2}" \times 10"$ rectangle, Fabric **F** $> 4\frac{1}{2}" \times 10"$ rectangle, Fabric **G** $> 4\frac{1}{2}" \times 10"$ rectangle, Fabric **F** $> 3\frac{1}{2}" \times 10"$ rectangle, Fabric **G** $> 2\frac{1}{2}" \times 10"$ rectangle, Fabric **F**
- Cross-cut every $2\frac{1}{2}"$ to make four strips.

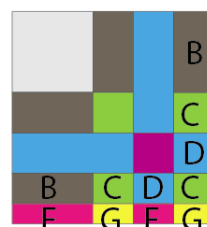
Block A1



Block A2



Block A3



Block A4

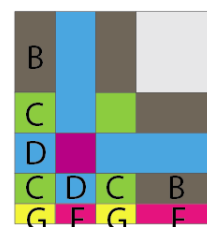


DIAGRAM 6

- Now make two (2) block B1, and one (1) block B2:

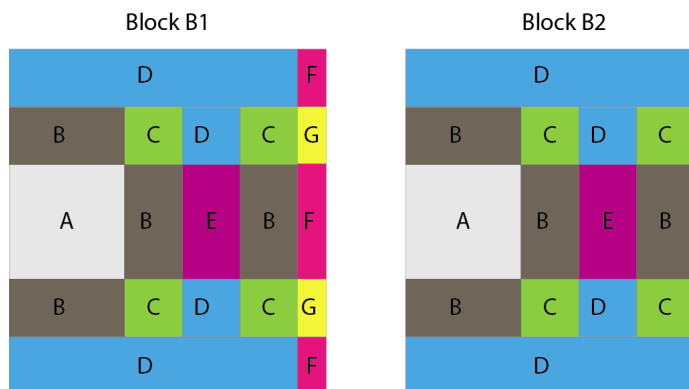


DIAGRAM 7

- Strip 1B
- Take a 20 1/2" x 27" rectangle, Fabric **D**, and Cross-cut every 4 1/2" to make six strips
- Strip 2B
- Piece together: 8 1/2" x 27" rectangle, Fabric **B** > 4 1/2" x 27" rectangle, Fabric **C** > 4 1/2" x 27" rectangle, Fabric **D** > 4 1/2" x 27" rectangle, Fabric **C**
- Cross-cut every 4 1/2" to make six strips
- Strip 3B
- Piece together: 8 1/2" x 25 1/2" rectangle, Fabric **A** > 4 1/2" x 25 1/2" rectangle, Fabric **B** > 4 1/2" x 25 1/2" rectangle, Fabric **E** > 4 1/2" x 25 1/2" rectangle, Fabric **B**
- Cross-cut every 8 1/2" to make three strips
- Strip 4B
- Piece together: 4 1/2" x 5" rectangle, Fabric **F** > 4 1/2" x 5" rectangle, Fabric **G** > 8 1/2" x 5" rectangle, Fabric **F** > 4 1/2" x 5" rectangle, Fabric **G** > 4 1/2" x 5" rectangle, Fabric **F**
- Cross-cut every 2 1/2" to make two strips

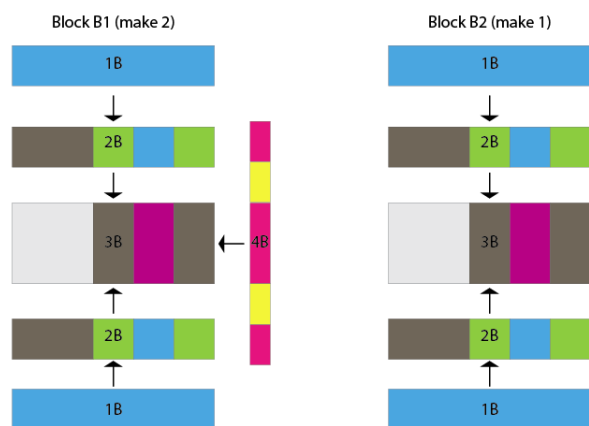


DIAGRAM 8

ASSEMBLING THE QUILT TOP

Sew all rights sides together with 1/4" seam allowance. Press open.

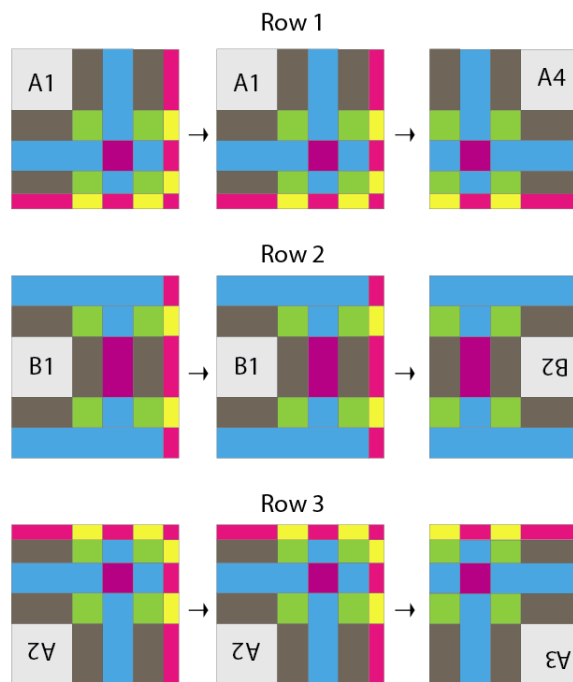


DIAGRAM 9

- Attach all the blocks in the following order:
- Row 1: A1 > A1 > A4
- Row 2: B1 > B1 > B2 (upside down)
- Row 3: A2 (upside down) > A2 (upside down) > A3 (upside down)
- Follow Diagram 9 for block's placement and attachment..
- Join Row 1 > Row 2 > Row 3.

QUILT ASSEMBLY

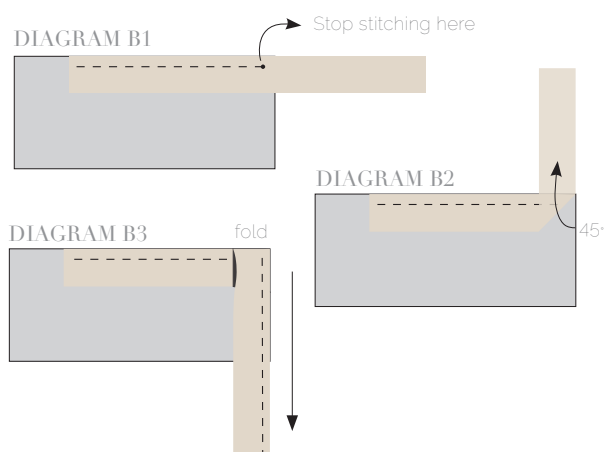
Sew rights sides together.

- Place BACKING FABRIC on a large surface wrong side up. Stretch it with masking tape against that surface.
- Place BATTING on top of backing fabric.
- Place TOP on top of the batting with right side facing up. Smooth away wrinkles using your hands.

- Pin all layers together and baste with basting thread, using long stitches. You can also use safety pins to join the layers.
- Machine or hand quilt starting at the center and working towards the corners. Remember that quilting motifs are a matter of personal preference. Have fun choosing yours!
- After you finished, trim excess of any fabric or batting, squaring the quilt to proceed to bind it.

BINDING

Sew rights sides together.



- Cut enough strips $1\frac{1}{2}$ ' wide by the width of the fabric **F** to make a final strip 270' long. Start sewing the binding strip in the middle of one of the sides of the quilt, placing the strip right side down and leaving an approximated 5' tail. Sew with $\frac{1}{4}$ ' seam allowance (using straight stitch), aligning the strip's raw edge with the quilt top's raw edge.
- Stop stitching $\frac{1}{4}$ ' before the edge of the quilt (**DIAGRAM B 1**). Clip the threads. Remove the quilt from under the machine presser foot. Fold the strip in a motion of 45° and upward, pressing with your fingers (**DIAGRAM B2**). Hold this fold with your finger, bring the strip down in line with the next edge, making a horizontal fold that aligns with the top edge of the quilt (**DIAGRAM B3**). Start sewing at $\frac{1}{4}$ ' of the border, stitching all the layers. Do the same in the four corners of the quilt.

- Stop stitching before you reach the last 5 or 6 inches. Cut the threads and remove the quilt from under the machine presser foot. Lay the loose ends of the binding flat along the quilt edge, folding the ends back on themselves where they meet. Press them together to form a crease. Using this crease as the stitching line, sew the two open ends of the binding with right sides together (you can help yourself marking with a pencil if the crease is difficult to see).
- Trim seam to $\frac{1}{4}$ ' and press open. Complete the sewing. Turn binding to back of the quilt, turn raw edge inside and stitch by hand using blind stitch.



artgalleryfabrics.com

NOTE: While all possible care has been taken to ensure the accuracy of this pattern, We are not responsible for printing errors or the way in which individual work varies. Please read instructions carefully before starting the construction of this quilt. If desired, wash and iron your fabrics before starting to cut.

© 2016 Courtesy of Art Gallery Quilts LLC. All Rights Reserved.